

The logo for NAI Commercial, featuring the letters 'NAI' in a bold, sans-serif font with a red diagonal line through the 'A', followed by the word 'Commercial' in a smaller, black, sans-serif font.

NAICommercial

A red diagonal banner in the top right corner containing the text '9,452 SF' in white, bold, sans-serif font.

9,452 SF

A photograph of a modern glass skyscraper in a city setting, with other buildings and a construction site visible in the background. The building's glass facade reflects the surrounding environment.

#300 - 605 Robson Street | Vancouver, BC

FOR LEASE | Fully Improved Full Floor

Opportunity to lease a full floor office space in Downtown Vancouver, located on the North West corner of Robson and Seymour Streets. Steps away from the Canada Line, SkyTrain, bus routes, shops, cafés, and restaurants. Well maintained building with on site management.

Roy Gibbs, LL.B
Personal Real Estate Corporation
Commercial Leasing & Sales
778 834 4050
rgibbs@naicommercial.ca

Chris Oteman, B.Sc.
Commercial Leasing & Sales
604 828 0535
coteman@naicommercial.ca

NAI Commercial
1075 W Georgia St, Suite 1300
Vancouver, BC V6E 3C9
+1 604 683 7535
naicommercial.ca

#300 - 605 Robson Street

Vancouver, BC

Property Details

Unit Size:	9,452 SF
Net Rent:	\$28.00/SF
Additional Rent:	\$22.79/SF (2025)
Availability:	July 1, 2025 (potentially sooner)

Premises:

Full floor space suitable for assembly, health care, or general office uses. Current improvements include rooms of various sizes, offices, staff lounge with adjacent patio, and standard and handicap accessible washrooms. The Premises has full height windows on all sides providing abundant natural light throughout. Demising to approximately 4,700 SF is possible.

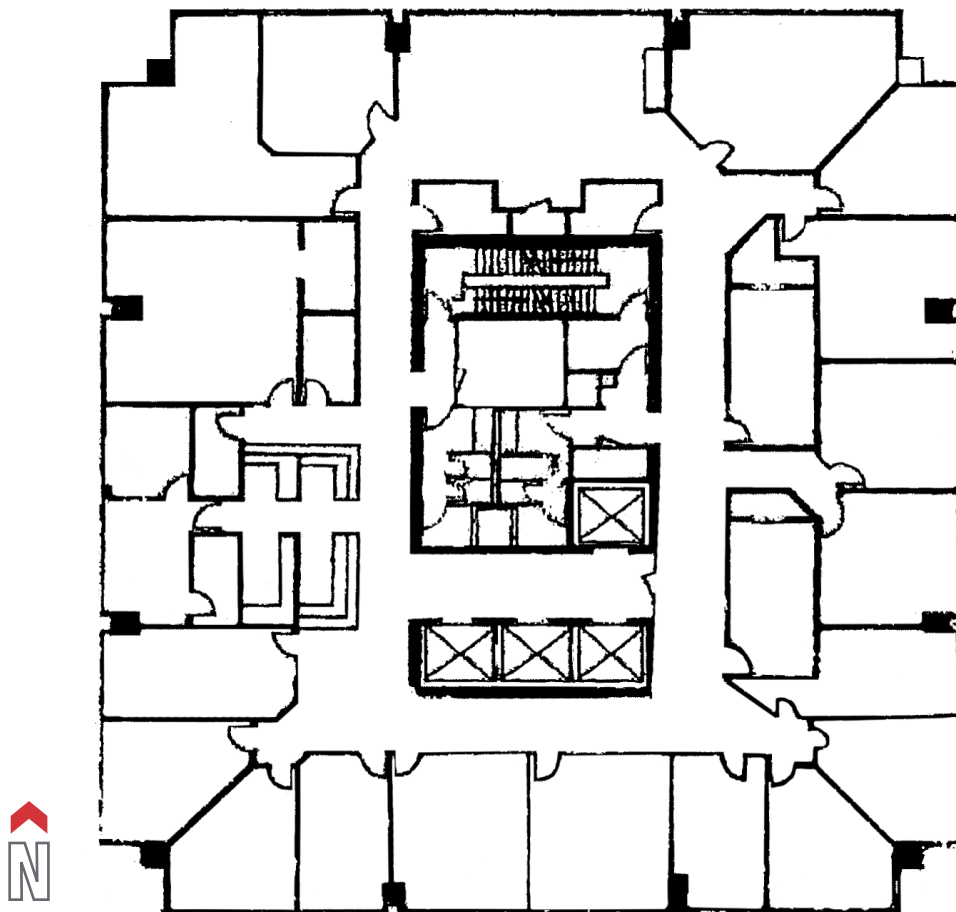
Building Details:

605 Robson Street is 1 block from Vancouver City Centre Skytrain Station and provides abundant visitor parking (available at half hour, hourly, or full day rates).

The building also provides abundant random and reserved tenant parking, secure bicycle storage, and end of trip facilities.

On-site ownership and management provides first-class service to tenants.

Floor Plan



Roy Gibbs, LL.B

Personal Real Estate Corporation
Commercial Leasing & Sales
778 834 4050
rgibbs@naicommercial.ca

Chris Oteman, B.Sc.

Commercial Leasing & Sales
604 828 0535
coteman@naicommercial.ca



LAW COURTS

ROBSON SQUARE

VANCOUVER CITY CENTRE

PACIFIC CENTRE

GRANVILLE

605 ROBSON

ORPHEUM

SEYMOUR ST

ROBSON ST

VANCOUVER PUBLIC LIBRARY

WITHIN 5-MIN WALKING DISTANCE

- Five Guys
- Meat & Bread
- Blenz Coffee
- Aladdin Café
- Guu Japanese
- Bahar Bakery & Cafe
- H-Mart
- Cafe Monet Bakery
- Tractor Foods
- JINYA Ramen
- JAPADOG
- CIBC Bank
- The Ox Pub
- Chipotle Mexican
- Jollibee
- Starbucks
- Tim Hortons
- Glowbal
- London Drugs
- Pacific Centre
- Hudson's Bay
- Popeyes
- McDonald's
- Dublin Calling Bar
- Staples
- Fable Diner & Bar
- Cafe Medina
- Viet Sub Vietnamese
- Falafel King
- Paramount Fine Foods
- Gong Cha
- Taf's Cafe
- The Fountainhead Pub

Roy Gibbs, LL.B
 Personal Real Estate Corporation
 Commercial Leasing & Sales
 778 834 4050
 rgibbs@naicommercial.ca

Chris Oteman, B.Sc.
 Commercial Leasing & Sales
 604 828 0535
 coteman@naicommercial.ca



No warranty or representation, express or implied, is made as to the accuracy of the information contained herein, and the same is submitted subject to errors, omissions, change of price, rental or other conditions, prior sale, lease or financing, or withdrawal without notice, and of any special listing conditions imposed by our principals no warranties or representations are made as to the condition of the property or any hazards contained therein are any to be implied. Aerial image(s) courtesy of Google, Landsat/Copernicus

NAI Commercial
 1075 W Georgia St, Suite 1300
 Vancouver, BC V6E 3C9
 +1 604 683 7535
 naicommercial.ca