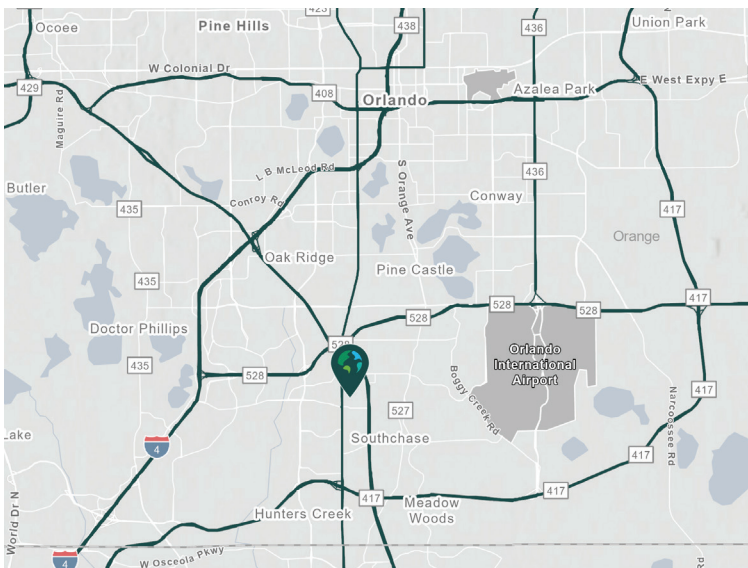


19,200 SF

**10611 Satellite Boulevard
Orlando, FL 32837**

Prologis Cypress Park



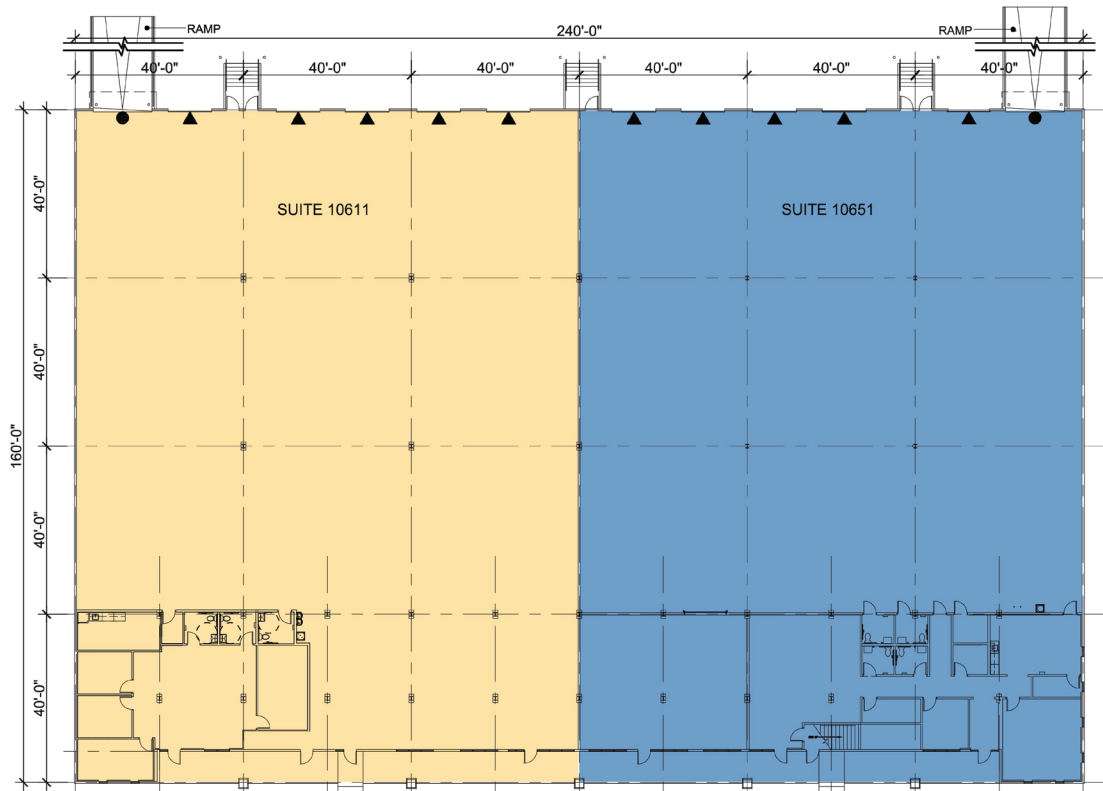
- Immediate access to SR-528 with direct routes to Orlando International Airport (MCO).
- Minutes from SR-417 and Florida's Turnpike for efficient regional distribution.
- Strategically located in the South Orlando industrial corridor near key freight routes.

Property Features

| | |
|--------------------|-----------------|
| Available Space | 19,200 SF |
| Office SF | 1,925 SF |
| Clear Height | 18' |
| Column Spacing | 40' x 40' |
| Dock Doors | 5 |
| Drive-in Doors | 1 |
| Car Parking Spaces | 2.03 / 1,000 SF |
| Electrical Service | 200 amps |
| Sprinkler | ESFR |
| Lighting | LED |



Unlock the full potential of your warehouse with one strategic, single-source partner.



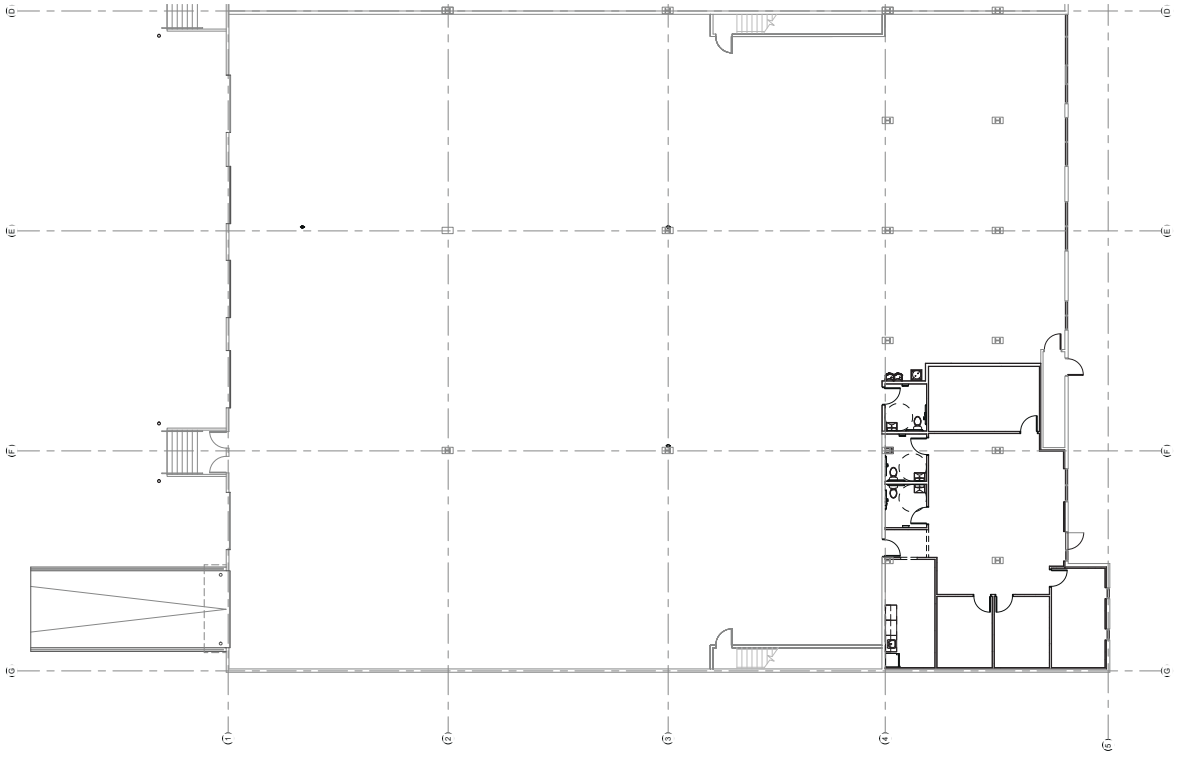
LEGEND

- AVAILABLE
- LEASED
- DOCK DOOR
- DRIVE-IN DOOR



Jones Lang LaSalle
Bobby Isola, SIOR, CCIM
Bobby.Isola@jll.com
ph +1 407 930 1804

Jones Lang LaSalle
Kristin Griffin
Kristin.Griffin@jll.com
ph +1 407 930 7103



OFFICE - 1,925 SF