

CODE SUMMARY

1	SCOPE OF WORK	OFFICE AND WAREHOUSE REMODEL OF PREVIOUSLY BUILT-OUT OFFICE AND WAREHOUSE SPACE			
2	PREVIOUS USE OF SPACE	MIXED USE: B (BUSINESS) / S1 (STORAGE)			
3	OCCUPANCY CLASSIFICATION	MIXED USE: B (BUSINESS) / S1 (STORAGE)			
4	CHANGE OF OCCUPANCY CLASS?	NO			
5	TOTAL BUILDING AREA	60,044 SF/FLOOR	X	1 STORY	= 60,044 SF
6	TOTAL PROJECT AREA	11,749 SF			
7	OCCUPANCY CALCULATIONS	SPACE TYPE	AREA	SF PER OCCUPANT	OCCUP LOAD
		BUSINESS	5,243 SF	100	53
		ASSEMBLY <small>(BEFORE 10-1-2015 WAREHOUSE BREAK 103 - CONP 112)</small>	1,493 SF	15	100
		STORAGE	5,013 SF	300	17
		TOTAL OCCUPANTS IN PROJECT AREA			170
		<small>NOTE THAT ANY ASSEMBLY SPACES SUCH AS CONFERENCE/MEETING/COLLAB/Huddle/BREAK ROOMS SHOWN ARE LESS THAN 750 SF IN AREA AND ARE THEREFORE CLASSIFIED AS A GROUP B OCCUPANCY ACCORDING TO IBC SECTION 303.1.2. SEE PLAN FOR OCCUPANT LOADS PER ROOM.</small>			
8	NUMBER OF EXITS	REQUIRED: 2	PROVIDED: 3		
9	SPRINKLER SYSTEM (YES/NO)	YES - EXISTING TO REMAIN			
10	TOTAL AREA OF ACCESSORY USES	0 SF			
11	TOTAL AREA ON THE FLOOR	60,044 SF			
12	ACCESSORY AREA EXCEEDS 10%	NO			
13	FIRE BARRIERS, AND/OR OCCUPANCY SEPARATIONS (IF REQUIRED)	OCCUPANCY SEPARATION SHOWN ON PLAN			
14	ASHRAE 90.1 SUMMARY	REQUIREMENTS WILL BE MET (SEE REFLECTED CEILING PLAN)			
15	BUILT BEFORE 1978?	NO			
16	BUILDING CONSTRUCTION TYPE	II-B			

LEGEND

-  EXISTING ELECTRICAL PANEL LOCATION
-  EXISTING EXIT
-  FIRE EXTINGUISHER
-  EXIT SIGN
-  EMERGENCY LIGHT
-  EXIT SIGN EMERGENCY LIGHT COMBO
-  1-HR RATED OCCUPANCY SEPARATION
-  TRAVEL DISTANCE

LIFE SAFETY NOTES

- PROVIDE EMERGENCY LIGHTING IN TENANT SPACE AS REQUIRED PER NEMA AND IBC. EMERGENCY BATTERY PACKS OR LIGHTS CONNECTED TO AN EMERGENCY POWER SOURCE ARE REQUIRED IF THE SPACE CONTAINS 50 PERSONS OR MORE. FIXTURES SHOWN ON PLAN ARE FOR REFERENCE ONLY.
- PROVIDE ALARM NOTIFICATION APPLIANCES (HORNS/STROBES), EMERGENCY SPEAKERS, SMOKE DETECTORS, FIRE PULLS, AND ANY OTHER REQUIRED ALARM & DETECTION SYSTEMS AS NECESSARY TO MEET ALL APPLICABLE CODES (INTERNATIONAL BUILDING CODE, INTERNATIONAL FIRE CODE, NFPA), IN RECEPTION AREAS, CONFERENCE ROOMS AND OTHER HIGH PROFILE AREAS WITHIN SUITE. ALL LOCATIONS OF SUCH DEVICES MUST BE APPROVED BY SDI OR TENANT PRIOR TO INSTALLATION. FAILURE TO DO SO MAY RESULT IN CONTRACTOR RELOCATING THESE ITEMS AT THEIR EXPENSE.
- FIRE EXTINGUISHERS: CONTRACTOR TO ENSURE ALL NEW AND EXISTING FIRE EXTINGUISHERS ARE INSTALLED ACCORDING TO NFPA 10. COORDINATE WITH OWNER/LANDLORD ON EXTINGUISHER TYPE AND HOUSING. MAXIMUM TRAVEL DISTANCE OF 75 FEET FROM ANY POINT TO A VISIBLE EXTINGUISHER.
- FIRE PROTECTION WORK IS TO BE PROVIDED BY DESIGN/BUILD SERVICES UNDER THE GENERAL CONTRACT. PROVIDE A COMPLETE WORKING SYSTEM. SCHOTT DESIGN, INC., IS NOT RESPONSIBLE FOR THE DESIGN, INSTALLATION, OR RENOVATION OF THE FIRE SPRINKLER SYSTEM.
- THE FIRE PROTECTION CONTRACTOR SHALL GENERATE ALL REQUIRED DRAWINGS, AND SHALL FILE THOSE DRAWINGS, AND RELATED DOCUMENTS, WITH THE STATE AND LOCAL AUTHORITIES HAVING JURISDICTION OVER THE PROJECT.

GENERAL NOTES

- REFER TO ARCHITECTURAL PLAN FOR WALL TYPE AND CONSTRUCTION DETAILS.
- EXISTING EXIT SIGNS, FIRE PULLS, FIRE EXTINGUISHERS, ALARM NOTIFICATION APPLIANCES TO REMAIN. RELOCATE EXISTING EXIT SIGNS, FIRE PULLS, FIRE EXTINGUISHERS AND ALARM NOTIFICATIONS AS REQUIRED TO MEET ALL LOCAL AND STATE CODES.
- SQUARE FOOTAGES NOTED IN CODE SUMMARY CHART ARE NOT REFLECTIVE OF USABLE/RENTABLE SQUARE FOOTAGE AS CALCULATED BY METHODS SUCH AS BOMA STANDARDS. OCCUPANCY CALCULATIONS & TOTALS ARE CALCULATED BASED ON INTERNATIONAL BUILDING CODE NOT ACTUAL HEAD COUNTS. CONTACT SDI FOR ADDITIONAL INFORMATION AS NECESSARY.

schott design
 8888 Keystone Crossing, Suite 100
 Indianapolis, IN 46240
 p. 317.387.1700
 www.schottdesign.com

THIS DRAWING, AND THE IDEAS, DESIGNS AND CONCEPTS CONTAINED HEREIN, ARE THE EXCLUSIVE INTELLECTUAL PROPERTY OF SCHOTT DESIGN, INC., AND ARE NOT TO BE USED OR REPRODUCED IN WHOLE, OR IN PART, WITHOUT THE WRITTEN CONSENT OF SCHOTT DESIGN.

ISSUE SPEC SUITE
915 WESTERN DRIVE
INDIANAPOLIS, IN 46241

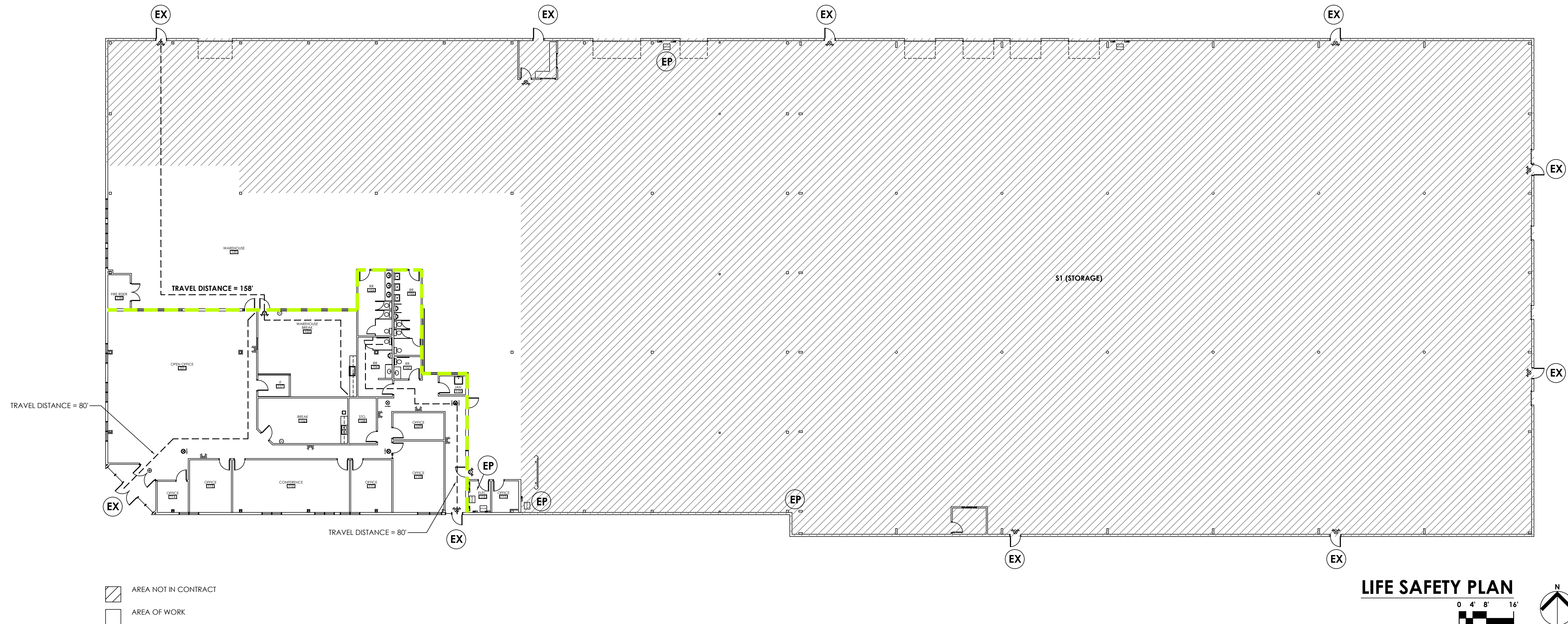
ISSUE	DATE	DESCRIPTION
	02.17.24	REVIEW SET


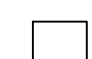
REVISIONS	MARK	DATE	BY	DESCRIPTION

PROJECT NUMBER
 2026.017
 PROJ. MGR DRAWN BY
 MS TMK

1ST FLOOR
 LIFE SAFETY
 PLAN

L100



-  AREA NOT IN CONTRACT
-  AREA OF WORK

LEGEND

EXISTING TO BE REMOVED

=====	WALL
=====	PARTIAL HEIGHT WALL
-----	DOOR AND FRAME
(S)	SALVAGE FOR RELOCATION
==--==	WINDOW / SIDELIGHT
-----	CEILING GRID AND TILES, 2x4
-----	CEILING GRID AND TILES, 2x2
⊠	SUPPLY AIR DIFFUSERS
⊠	EXHAUST FAN
⊠	LIGHT FIXTURE, FLUORESCENT, 2x4
⊠	LIGHT FIXTURE, FLUORESCENT, 2x2
⊠	LIGHT FIXTURE, CAN
⊠	LIGHT FIXTURE, FLUORESCENT
⊠	LIGHT FIXTURE, TRACK
⊠	LIGHT FIXTURE, SCONCE
⊠	LIGHT FIXTURE, PENDANT
⊠	LIGHT SWITCH
⊠	EXIT LIGHT
⊠	EMERGENCY LIGHT
⊠	ELECTRIC OUTLET(S)
⊠	DATA OR COMMUNICATION OUTLET

EXISTING TO REMAIN

=====	WALL
=====	PARTIAL HEIGHT WALL
-----	DOOR AND FRAME
==--==	WINDOW / SIDELIGHT

RECYCLING INSTRUCTIONS

RECYCLING BIN:

- CONTACT WASTE HAULER TO ORDER TRASH DUMPSTER(S) AS REQUIRED AND (1) "METALS ONLY" RECYCLING BIN FOR THE DEMOLITION PORTION OF PROJECT ONLY. **CONTACT CW RECYCLING (TIM RAGSDALE - 317.439.8735) FOR OPTION WHICH ACHIEVES THE HIGHEST WASTE TO LANDFILL DIVERSION RATE.** CW RECYCLING UTILIZES COMINGLED BINS FOR EASE OF RECYCLING PROCESS.
- DRYWALL MUST BE REMOVED FROM ALL METAL STUDS PRIOR TO PLACING IN "METALS ONLY" BIN. ANY ADDED LABOR COST WILL BE COVERED BY METAL CREDITS RECEIVED FROM WASTE HAULER.
- WASTE HAULER WILL APPLY CREDIT FOR METALS OBTAINED IN "METALS ONLY" BIN TOWARDS CONTRACTORS OVERALL INVOICE.
- DATA/DIVERSION REPORTS ARE NOT REQUIRED NOR ANY LEED PROCESSES OR PAPERWORK.

APPROVED METAL ITEMS:

- METAL STUDS, DOOR FRAMES, DOOR HARDWARE, CEILING GRID, LIGHT BOX FIXTURES, METAL CABINETS, METAL PLUMBING FIXTURES, ELECTRICAL AND DATA WIRING/CONDUIT, HVAC COMPONENTS, AND ELECTRICAL/DATA/SWITCH BOXES

CARPET RECYCLING:

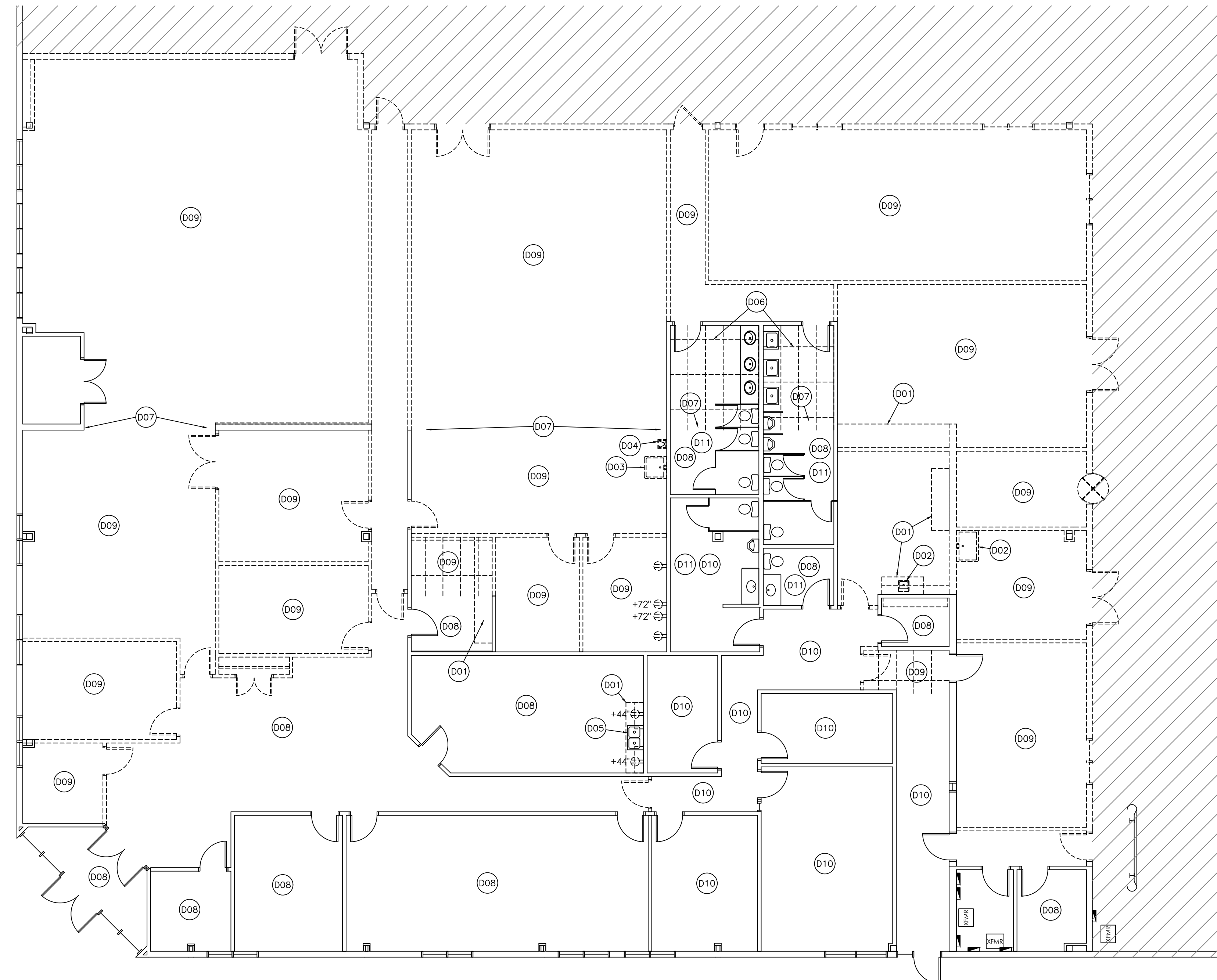
- THE CARPET BEING REMOVED IS NOT RECYCLABLE OR DOES NOT MEET THE RECYCLING MINIMUM AND SHOULD BE PLACED IN THE TRASH DUMPSTER. NO RECYCLING COST WILL BE INCURRED.

GENERAL NOTES

- REFER TO ALL DECONSTRUCTION NOTES ON TITLE SHEET T111.
- REMOVE EXISTING RECEPTACLES AND/OR SWITCHES AS SHOWN ON PLAN PER LEGEND. PATCH WALL AND PREPARE FOR NEW FINISHES AS REQUIRED.
- SALVAGE REMOVED DOORS FOR REUSE WHERE POSSIBLE. SEE DOOR SCHEDULE FOR MORE INFORMATION.

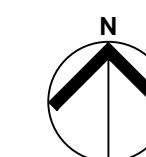
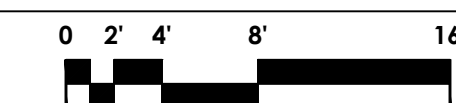
PLAN NOTES

- (D01) REMOVE EXISTING CABINETS AND COUNTERTOP.
- (D02) REMOVE EXISTING SINK.
- (D03) EXISTING SERVICE SINK TO BE RELOCATED. SEE ARCHITECTURAL PLAN FOR NEW LOCATION.
- (D04) REMOVE EXISTING DRINKING FOUNTAIN.
- (D05) SALVAGE EXISTING SINK AND FAUCET FOR REUSE IN NEW CABINETS AT THIS LOCATION.
- (D06) REMOVE CEILING GRID AT RESTROOMS WHERE IT EXTENDS PAST EXISTING BULKHEAD/SEPARATION WALL.
- (D07) EXISTING BULKHEAD/SEPARATION WALL ABOVE CEILING TO REMAIN.
- (D08) EXISTING CEILING GRID TO REMAIN IN THIS AREA; REMOVE EXISTING CEILING TILES (WHERE APPLICABLE) AND LIGHT FIXTURES. SEE REFLECTED CEILING PLAN FOR MORE INFORMATION.
- (D09) REMOVE EXISTING CEILING GRID, CEILING TILES (WHERE APPLICABLE), AND LIGHT FIXTURES FROM THIS AREA WHERE CEILING IS TO BE EXPOSED TO DECK. REMOVE AS MUCH OF THE EXPOSED CONDUIT, PIPING, JUNCTION BOXES AND MISCELLANEOUS UNUSED EQUIPMENT IN THE CEILING AS POSSIBLE. SEE REFLECTED CEILING PLAN FOR MORE INFORMATION.
- (D10) EXISTING CEILING GRID AND LED LIGHT FIXTURES TO REMAIN IN THIS AREA; REMOVE EXISTING CEILING TILES (WHERE APPLICABLE). SEE REFLECTED CEILING PLAN FOR MORE INFORMATION.
- (D11) EXISTING PLUMBING FIXTURES, RESTROOM ACCESSORIES, AND TOILET PARTITIONS (WHERE APPLICABLE) TO REMAIN AT THIS LOCATION. FAUCETS TO BE REMOVED AND REPLACED WITH NEW.



- ▨ AREA NOT IN CONTRACT
- AREA OF WORK

DECONSTRUCTION PLAN



schott design
 8888 Keystone Crossing, Suite 100
 Indianapolis, IN 46240
 p. 317.387.1700
 www.schottdesign.com

THIS DRAWING, AND THE IDEAS, DESIGNS AND CONCEPTS CONTAINED HEREIN, ARE THE EXCLUSIVE INTELLECTUAL PROPERTY OF SCHOTT DESIGN, INC., AND ARE NOT TO BE USED OR REPRODUCED IN WHOLE, OR IN PART, WITHOUT THE WRITTEN CONSENT OF SCHOTT DESIGN.

SPEC SUITE
 915 WESTERN DRIVE
 INDIANAPOLIS, IN 46241

ISSUE

DATE	DESCRIPTION
02.17.26	REVIEW SET

REVISIONS

MARK	DATE	DB	DESCRIPTION
------	------	----	-------------

PROJECT NUMBER
2026.017

PROJ. MGR DRAWN BY
MS TMK

1ST FLOOR
DECONSTRUCTION
PLAN

D111

ARCHITECTURAL LEGEND

NEW CONSTRUCTION	EXISTING TO REMAIN
WALL	WALL
PARTIAL HEIGHT WALL	PARTIAL HEIGHT WALL
WINDOW / SIDELIGHT	WINDOW / SIDELIGHT
DOOR AND FRAME (SEE DOOR SCHEDULE)	DOOR AND FRAME

WALL TYPES

NOTE:
 ALL PLAN DIMENSIONS ARE FROM FACE TO FACE OF FINISHED WALL.
 ALL WALLS ARE TO BE W1 UNLESS OTHERWISE NOTED.
 PROVIDE MOISTURE RESISTANT / GREEN BOARD AS REQUIRED IN RESTROOM AND/OR SHOWER ROOMS.
 NOT ALL WALL TYPES LISTED BELOW ARE NECESSARILY USED ON THIS PROJECT. REFER TO REFLECTED CEILING PLAN FOR CEILING HEIGHTS.

W1 STANDARD WALL
 3 3/8" METAL STUDS AT 16" O.C.;
 ONE LAYER OF 5/8" TYPE "X" GYPSUM BOARD
 EACH SIDE;
 EXTEND WALL TO UNDERSIDE OF CEILING

W2 ONE-HOUR RATED WALL
 4" METAL STUDS AT 16" O.C. (UTILIZE HEAVY GAUGE STUD AS REQUIRED); ONE LAYER 5/8" FIRE-SHIELD (OR SIMILAR) GYPSUM BOARD EACH SIDE; HORIZONTAL AND VERTICAL JOINTS STAGGERED; EXTEND WALL TO UNDERSIDE OF EXISTING RATED BULKHEAD; ALL PENETRATIONS TO BE FIRE STOPPED AND SMOKE DAMPERED AS REQUIRED

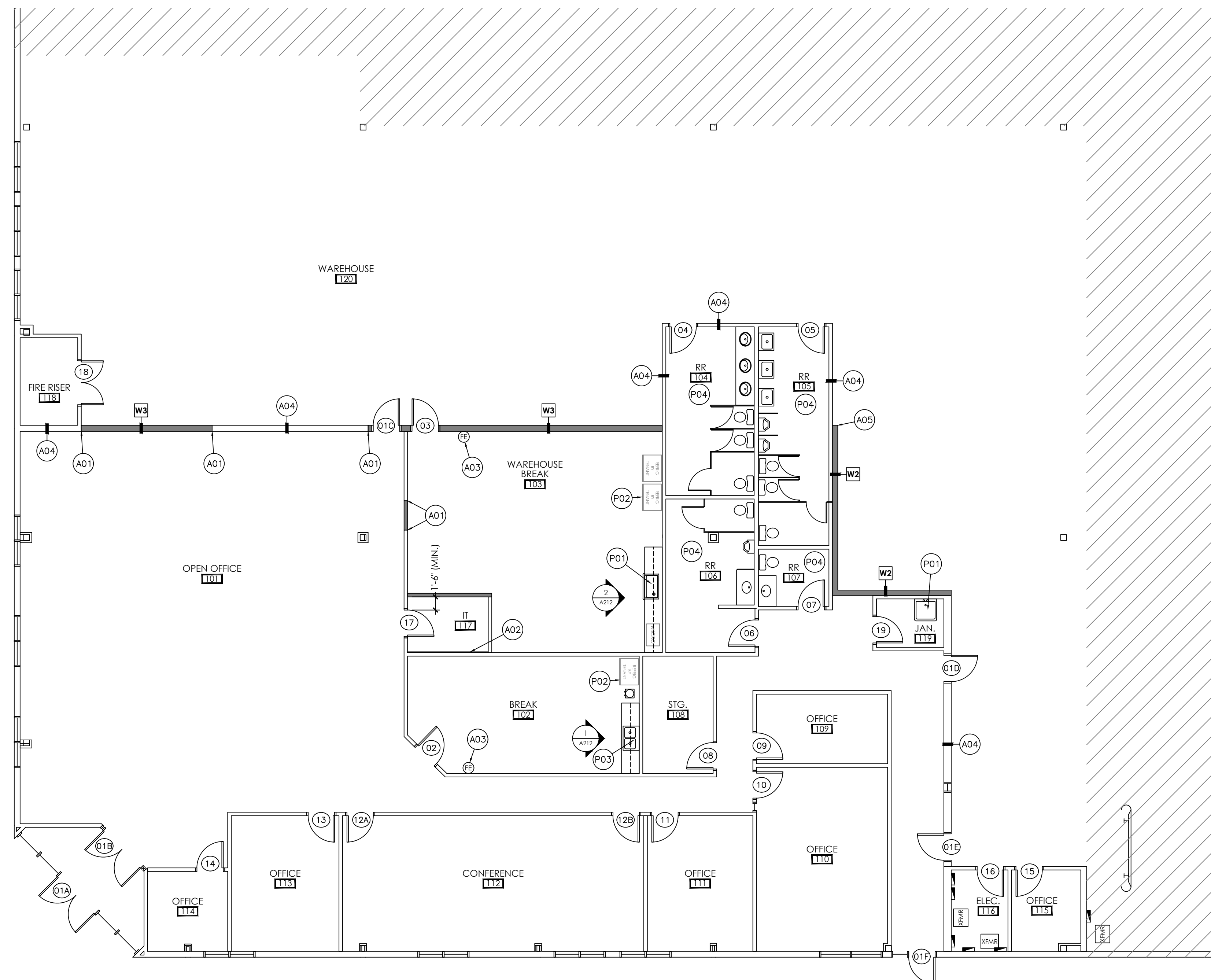
W3 ONE-HOUR RATED WALL
 8" METAL STUDS AT 16" O.C. (UTILIZE HEAVY GAUGE STUD AS REQUIRED); ONE LAYER 5/8" FIRE-SHIELD (OR SIMILAR) GYPSUM BOARD EACH SIDE; HORIZONTAL AND VERTICAL JOINTS STAGGERED; EXTEND WALL TO UNDERSIDE OF EXISTING RATED BULKHEAD; ALL PENETRATIONS TO BE FIRE STOPPED AND SMOKE DAMPERED AS REQUIRED

GENERAL NOTES

- SEE ELECTRICAL PLAN FOR INTENDED FURNITURE LAYOUT.
- SEE DOOR SCHEDULE DETAILS FOR MANEUVERING CLEARANCES AT MANUAL SWINGING DOORS PER ANSI ICC A117.1-2009 SECTION 404.
- REFER TO FINISH PLAN FOR ALL ACCENT/SPECIALTY PAINT OR WALLCOVERING THAT REQUIRES LEVEL 4 OR LEVEL 5 DRYWALL FINISH. REFER TO MANUFACTURER RECOMMENDATIONS.
- PROVIDE INSULATION ON ALL NEW AND EXISTING PLUMBING PIPING AND BACK FLOW PREVENTERS ON ALL WATER LINES AS REQUIRED.

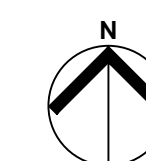
PLAN NOTES

- A01** ALIGN FINISHED WALL SURFACES. PROVIDE SAME THICKNESS STUDS AS EXISTING WALL AT DOOR INFILLS OR WHERE NEW WALLS ARE IN LINE WITH EXISTING WALLS.
- A02** EXISTING PLYWOOD PHONE BOARD TO REMAIN.
- A03** NEW FIRE EXTINGUISHER TO BE PROVIDED AND INSTALLED BY CONTRACTOR. ALL FIRE EXTINGUISHERS ARE TO BE INSTALLED ACCORDING TO NFPA 10.
- A04** CONFIRM EXISTING WALL HAS MINIMUM 1-HOUR FIRE RATING AND ALTER AS REQUIRED.
- A05** ALIGN END OF NEW WALL WITH EXISTING BULKHEAD ABOVE.
- P01** PROVIDE POTABLE HOT AND COLD WATER AND SANITARY WASTE AND VENT PIPING FOR SINKS. PROVIDE INSULATION ON ALL NEW AND EXISTING PIPING. REFER TO LANDLORD FOR SOURCE OF HOT WATER AND LOCATION ALLOWED IN THIS BUILDING. CONTRACTOR TO INSTALL AUTOMATIC SHUTOFF VALVES AND BACK FLOW PREVENTERS AS REQUIRED.
- P02** PROVIDE WATER LINE WITH BACKFLOW PREVENTER FOR COFFEE AND/OR REFRIGERATOR. CONFIRM LOCATION WITH TENANT.
- P03** REUSE EXISTING PLUMBING FOR RELOCATED SINK AT THIS LOCATION. CONTRACTOR TO INSTALL AUTOMATIC SHUTOFF VALVES AND BACK FLOW PREVENTERS AS REQUIRED.
- P04** ALL EXISTING PLUMBING FIXTURES TO REMAIN. ENSURE ALL ARE IN GOOD WORKING ORDER AND CLEAN TO LIKE-NEW CONDITION AS REQUIRED.



AREA NOT IN CONTRACT
 AREA OF WORK

ARCHITECTURAL PLAN
 0 2 4 8 16'



ISSUE

DATE	DESCRIPTION
02.17.24	REVIEW SET

REVISIONS

MARK	DATE	DB	DESCRIPTION

PROJECT NUMBER
2026.017

PROJ. MGR DRAWN BY
MS TMK

1ST FLOOR ARCHITECTURAL FLOOR PLAN

A111

THIS DRAWING, AND THE IDEAS, DESIGNS AND CONCEPTS CONTAINED HEREIN, ARE THE EXCLUSIVE INTELLECTUAL PROPERTY OF SCHOTT DESIGN, INC., AND ARE NOT TO BE USED OR REPRODUCED IN WHOLE OR IN PART, WITHOUT THE WRITTEN CONSENT OF SCHOTT DESIGN.

schott design
 8888 Keystone Crossing, Suite 100
 Indianapolis, IN 46240
 p. 317.387.1700
 www.schottdesign.com

SPEC SUITE
 915 WESTERN DRIVE
 INDIANAPOLIS, IN 46241

LEGEND

NEW OR RELOCATED	EXISTING TO REMAIN
2x4', LED	2x4', FLUORESCENT, PARABOLIC
EXIT LIGHT FIXTURE	VANITY LIGHT
EMERGENCY LIGHT FIXTURE	EXIT LIGHT FIXTURE
EMERGENCY LIGHT FIXTURE	EMERGENCY LIGHT FIXTURE
LIGHT SWITCH	LIGHT SWITCH
LIGHT SWITCH, 3-WAY	LIGHT SWITCH, 3-WAY
LIGHT SWITCH, DIMMER	LIGHT SWITCH, DIMMER
SWITCH, PROJECTOR SCREEN	SWITCH, PROJECTOR SCREEN
SWITCH, GARBAGE DISPOSAL (ABOVE COUNTERTOP)	SWITCH, GARBAGE DISPOSAL
SWITCH, EXHAUST FAN	SWITCH, EXHAUST FAN
LIGHT CIRCUIT	LIGHT CIRCUIT
CEILING GRID, SUSPENDED, 2x4'	CEILING GRID, SUSPENDED, 2x4'
GYPSUM BOARD CEILING	GYPSUM BOARD CEILING
EXPOSED TO DECK	
RELOCATED DIFFUSER, LAY-IN, 2x2'	DIFFUSER, LAY-IN, 2x2'
RELOCATED DIFFUSER, LAY-IN, 4x4'	DIFFUSER, LAY-IN, 4x4'
EXHAUST FAN, 2x2'	EXHAUST FAN, 2x2'

GENERAL NOTES

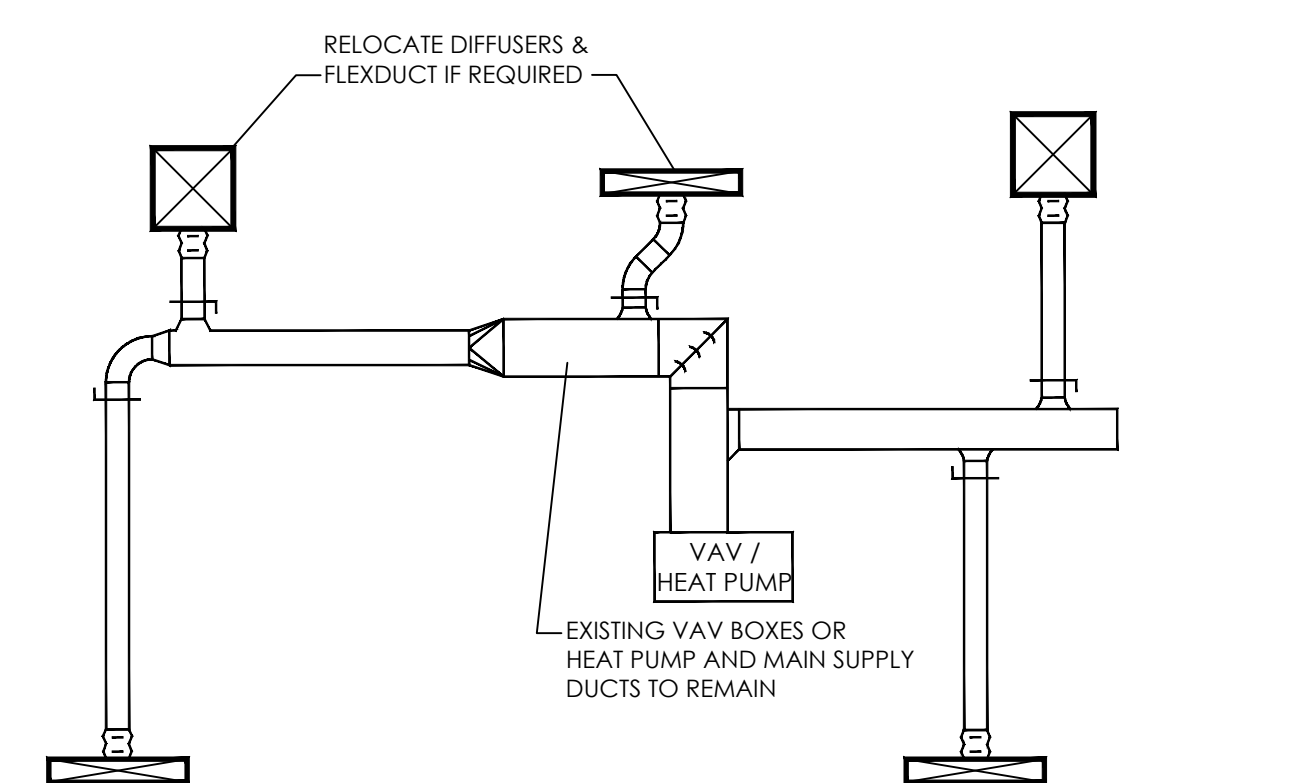
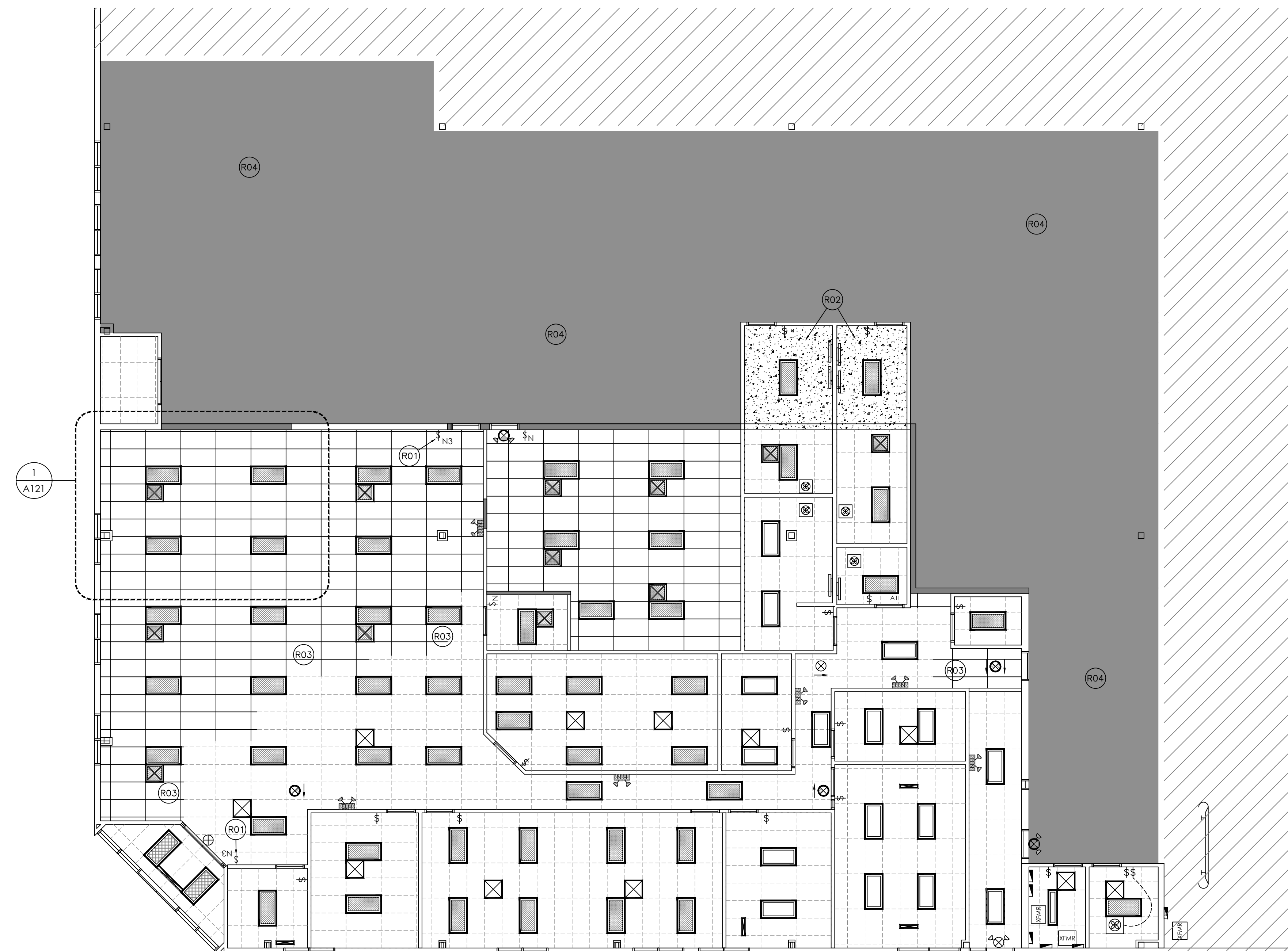
- REUSE EXISTING CEILING GRID UNLESS OTHERWISE NOTED. EXISTING GRID IS 2'x4' AT 9'-0" AFF. REPAIR ANY DAMAGED GRID TO MATCH EXISTING.
- PROVIDE NEW 2'x4' BUILDING STANDARD CEILING GRID THROUGHOUT OFFICE AREA OF SCOPE.
- PROVIDE EMERGENCY LIGHTING IN TENANT SPACE AS REQUIRED PER NEMA AND IBC. EMERGENCY BATTERY PACKS OR LIGHTS CONNECTED TO AN EMERGENCY POWER SOURCE ARE REQUIRED IF THE SPACE CONTAINS 50 PERSONS OR MORE. FIXTURES SHOWN ON PLAN ARE FOR REFERENCE ONLY. IN RECEPTION AREAS, CONFERENCE ROOMS AND OTHER HIGH PROFILE AREAS WITHIN SUITE, ALL LOCATIONS OF SUCH DEVICES MUST BE APPROVED BY SDI OR TENANT PRIOR TO INSTALLATION. FAILURE TO DO SO MAY RESULT IN CONTRACTOR RELOCATING THESE ITEMS AT THEIR EXPENSE.
- ELECTRICAL WORK IS LIMITED TO A DESIGN-BUILD SCOPE AND IS OUTLINED IN THESE DRAWINGS. ALL ELECTRICAL WORK IS LIMITED TO ADDITIONS OR RELOCATIONS OF ELECTRICAL OUTLET DEVICES AND LIGHTING THAT DO NOT EXCEED THE CAPACITY OF THE EXISTING ELECTRICAL SERVICE IN THE BUILDING. ELECTRICAL CONTRACTOR IS TO NOTIFY APPLICABLE PARTIES IF ADDITIONAL WORK IS REQUIRED SO THAT ADDITIONAL PLANS CAN BE FILED AND MUST COMPLY WITH ALL APPLICABLE CODES.
- WHERE POSSIBLE, GANG MULTIPLE SWITCHES TO ACCOMMODATE MULTI-SWITCH PLATE WHEN SWITCHES ARE SHOWN ADJACENT ON PLAN.
- REPLACE EXISTING DEVICES AND FACE PLATES WITH NEW WHITE DEVICES AND FACE PLATES.
- LAYOUT SHOWN IS INTENDED TO MEET ASHRAE 90.1 STANDARDS. ELECTRICAL CONTRACTOR IS RESPONSIBLE FOR COMPLIANT INSTALLATION. IF ADJUSTMENT IS REQUIRED TO MEET ASHRAE 90.1, CONTRACTOR MUST NOTIFY SDI. OVER 50% OF THE LIGHTING WILL BE REPLACED WITH NEW, SO ASHRAE WATTAGE REQUIREMENTS WILL NEED TO BE MET.
- ALL NEW SWITCHES TO BE OCCUPANCY SENSORS, PROVIDE COMBO UNIT WITH BOTH ULTRASONIC AND INFRARED TECHNOLOGY WITH A ONE BUTTON OVERRIDE. OCCUPANCY SENSORS ARE TO BE LOCATED SUCH THAT OCCUPANCY WITHIN ANY PORTION OF INCLUDED AREA IS DETECTED. PROVIDE CEILING MOUNTED OCCUPANCY SENSORS IN OPEN AREAS AS REQUIRED.

MECHANICAL NOTES

- MECHANICAL WORK IS LIMITED TO A DESIGN-BUILD SCOPE AND IS OUTLINED IN THESE DRAWINGS. NO NEW MAIN MECHANICAL APPLIANCES OR MAIN EQUIPMENT ARE BEING PROVIDED. ALL MECHANICAL WORK IS LIMITED TO RELOCATION OF DIFFUSERS AND FLEX DUCT PER NEW WALL LAYOUT. IF IN GOOD CONDITION, EXISTING H.V.A.C. DIFFUSERS SALVAGED FROM DECONSTRUCTION MAY BE SUBSTITUTED FOR NEW. NO NEW HARD DUCTWORK OR EQUIPMENT IS BEING ADDED. MECHANICAL CONTRACTOR IS TO NOTIFY APPLICABLE PARTIES IF ADDITIONAL WORK IS REQUIRED SO THAT ADDITIONAL PLANS CAN BE FILED AND MUST COMPLY WITH THE INDIANA MECHANICAL CODE AND ALL OTHER APPLICABLE CODES.

PLAN NOTES

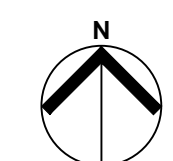
- (R01) CONTROL OPEN OFFICE LIGHTING WITH 3-WAY SWITCH AT THIS LOCATION. PROVIDE MULTIPLE SWITCHES AS REQUIRED.
- (R02) PROVIDE DRYWALL CEILING IN PORTION OF RESTROOM WHICH EXTENDS PAST EXISTING BULKHEAD, TO ALIGN WITH HEIGHT OF EXISTING BULKHEAD. USE 5/8" TYPE 'X' GYPSUM BOARD ON 20 GA METAL JOISTS @ 16" O.C. CEILING TO BE PAINTED BRIGHT CEILING WHITE, FLAT FINISH.
- (R03) PROVIDE NEW CEILING GRID AND TILE AS SHOWN TO MATCH AND ALIGN WITH EXISTING SUCH THAT NEW AND EXISTING CEILINGS APPEAR CONTINUOUS.
- (R04) PROVIDE WAREHOUSE LIGHTING TO MATCH EXISTING IN THIS AREA.



MECHANICAL DIFFUSER RELOCATION
 *REFER TO MECHANICAL NOTES FOR FURTHER INFORMATION

AREA NOT IN CONTRACT
 AREA OF WORK

REFLECTED CEILING PLAN



Schott design
 8888 Keystone Crossing, Suite 100
 Indianapolis, IN 46240
 pr. 317.387.1700
 www.schottdesign.com

THIS DRAWING, AND THE IDEAS, DESIGNS AND CONCEPTS CONTAINED HEREIN, ARE THE EXCLUSIVE INTELLECTUAL PROPERTY OF SCHOTT DESIGN, INC., AND ARE NOT TO BE USED OR REPRODUCED IN WHOLE, OR IN PART, WITHOUT THE WRITTEN CONSENT OF SCHOTT DESIGN.

SPEC SUITE
 915 WESTERN DRIVE
 INDIANAPOLIS, IN 46241

DATE	DESCRIPTION
02.17.26	REVIEW SET

MARK	DATE	DB	DESCRIPTION

PROJECT NUMBER
2026.017

PROJ. MGR DRAWN BY
MS TMK

1ST FLOOR
REFLECTED
CEILING PLAN

A121

LEGEND

FINISHES SHALL MEET ALL CLASS A FIRE RATINGS AND COMPLY WITH CHAPTER 8 OF INTERNATIONAL BUILDING CODE.

FLOOR COVERINGS

- CARPET**
- CPT1** MFG: TBD
TYPE: --
PATTERN: --
COLOR: --
INSTALL: -- (LENGTH OF PLANK TO RUN IN DIRECTIONS OF ARROWS ON PLAN)
- CPT2** MFG: TBD
TYPE: --
PATTERN: --
COLOR: --
INSTALL: -- (LENGTH OF PLANK TO RUN IN DIRECTIONS OF ARROWS ON PLAN)
- CPT2** MFG: TBD
TYPE: --
PATTERN: --
COLOR: --
INSTALL: -- (LENGTH OF PLANK TO RUN IN DIRECTIONS OF ARROWS ON PLAN)

LUXURY VINYL TILE

NOTE: AT ALL LVT LOCATIONS, PROVIDE SKINCOAT OF ARDEX LEVELING LATEX AS NEEDED FOR SMOOTH SUBFLOOR THAT WILL NOT ALLOW FOR TELEGRAPHING OF IMPERFECTIONS IN THE FLOOR

- LVT1** MFG: TBD
SIZE: --X-, XX THICK
PATTERN: --
COLOR: --
INSTALL: --

FLOOR TILE

TL1 MFG: TBD
PATTERN: --
SIZE: --
COLOR: --
GROUT: EQUAL TO TEC 550 POWER GROUT; JOINT TO BE 1/8"; COLOR: --

WALL BASE

B1 MFG: TBD
TYPE: 4" RUBBER COVE, 1/2" GAUGE
COLOR: --
NOTE: CONTACT SDI IF SPECIFICATION AND/OR COLORWAY IS NOT AVAILABLE IN PROJECTS REQUIRED SCHEDULE. VINYL BASE NOT PERMITTED.

WB1 WOOD BASE
SIZE: 4"
TYPE: --

TB1 MFG: TBD
PATTERN: --
SIZE: --
COLOR: --
GROUT: EQUAL TO TEC 550 POWER GROUT; JOINT TO BE 1/8"; COLOR: --

WALL FINISHES

PAINT

PT1 MFG: SHERWIN WILLIAMS
TYPE: PROMAR 200 ZERO VOC INTERIOR LATEX
COLOR: --
FINISH: EGGSHELL

PT2 MFG: SHERWIN WILLIAMS
TYPE: PROMAR 200 ZERO VOC INTERIOR LATEX
COLOR: --
FINISH: EGGSHELL

WALLCOVERING

WC1 MFG: TBD
TYPE: PVC FREE
PATTERN: --
COLOR: --
UTILIZE ROMAN PRO-880 ULTRA CLEAR ADHESIVE OR LEED COMPLIANT EQUAL AS RECOMMENDED BY MANUFACTURER

CASEWORK FINISHES

EX EXISTING TO REMAIN

CW NEW CASEWORK; SEE ELEVATIONS FOR FINISH LOCATIONS

PL1 - PLASTIC LAMINATE
MFG: TBD
COLOR: --

PL2 - PLASTIC LAMINATE
MFG: TBD
COLOR: --

SS1 - SOLID SURFACE
MFG: TBD
COLOR: --

QZ1 - QUARTZ
MFG: TBD
COLOR: --

MISCELLANEOUS

ZZ MFG: TBD
COLOR: --
PATTERN: --

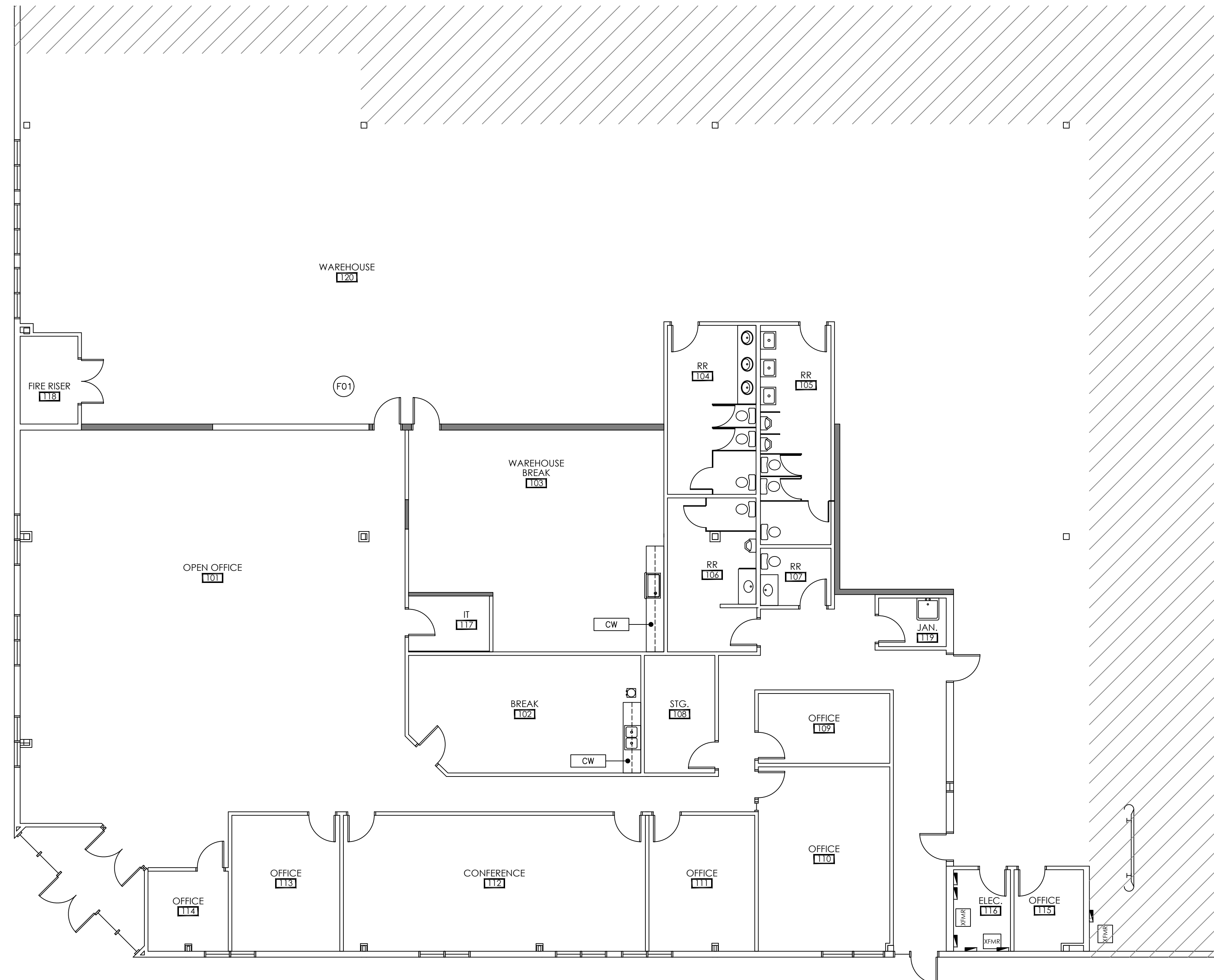
ZZ MFG: TBD
COLOR: --
PATTERN: --

GENERAL NOTES

- REFER TO LEGEND FOR ALL ACCENT/SPECIALTY PAINT OR WALLCOVERING THAT REQUIRES LEVEL 4 OR LEVEL 5 DRYWALL FINISH. REFER TO MANUFACTURER RECOMMENDATIONS.
- CONTRACTOR TO EVALUATE EXISTING FLOORING CONDITIONS AFTER DECONSTRUCTION IS COMPLETE AND PREP AS NECESSARY PER MANUFACTURERS RECOMMENDATIONS. SEAL COAT THE CONCRETE FLOOR PRIOR TO LAYING ADHESIVE IF DEEMED NECESSARY.
- AT ALL FLOOR TILE LOCATIONS PROVIDE WATERPROOFING CRACK ISOLATION MEMBRANE: TEC HYDRAFLEX FULL COVERAGE PER TCMA F125-11 FULL. PROVIDE CONTROL JOINTS EVERY 12' AT MINIMUM OR AS RECOMMENDED BY MANUFACTURER.
- AT NEW WALL TILE LOCATIONS PROVIDE APPROPRIATE SUBSTRATE FOR WALL TILE (AT EXISTING WALLS SCHLUTER KERDI BOARD OR EQUAL) (AT NEW WALLS CEMENT BACKER BOARD) AS RECOMMENDED BY MANUFACTURER.
- IF FINISH SUBMITTALS ARE REQUESTED AS PART OF THIS SCOPE, THEY ARE TO BE SUBMITTED IN DIGITAL FORMAT.
- EXTERIOR OF BUILDING TO RECEIVE NEW PAINT. CONFIRM REQUIREMENTS WITH LANDLORD.**

PLAN NOTES

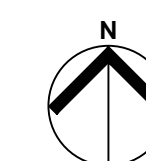
- F01** WAREHOUSE TO RECEIVE NEW PAINT AS REQUIRED. CONFIRM SPECIFICATION WITH LANDLORD.



AREA NOT IN CONTRACT

AREA OF WORK

FINISH PLAN
0 2 4 8 16'



schott design
8888 Keystone Crossing, Suite 100
Indianapolis, IN 46240
p. 317.387.1700
www.schottdesign.com

THIS DRAWING, AND THE IDEAS, DESIGNS AND CONCEPTS CONTAINED HEREIN, ARE THE EXCLUSIVE INTELLECTUAL PROPERTY OF SCHOTT DESIGN, INC., AND ARE NOT TO BE USED OR REPRODUCED IN WHOLE, OR IN PART, WITHOUT THE WRITTEN CONSENT OF SCHOTT DESIGN.

SPEC SUITE
915 WESTERN DRIVE
INDIANAPOLIS, IN 46241

ISSUE

DATE	DESCRIPTION
02.17.24	REVIEW SET

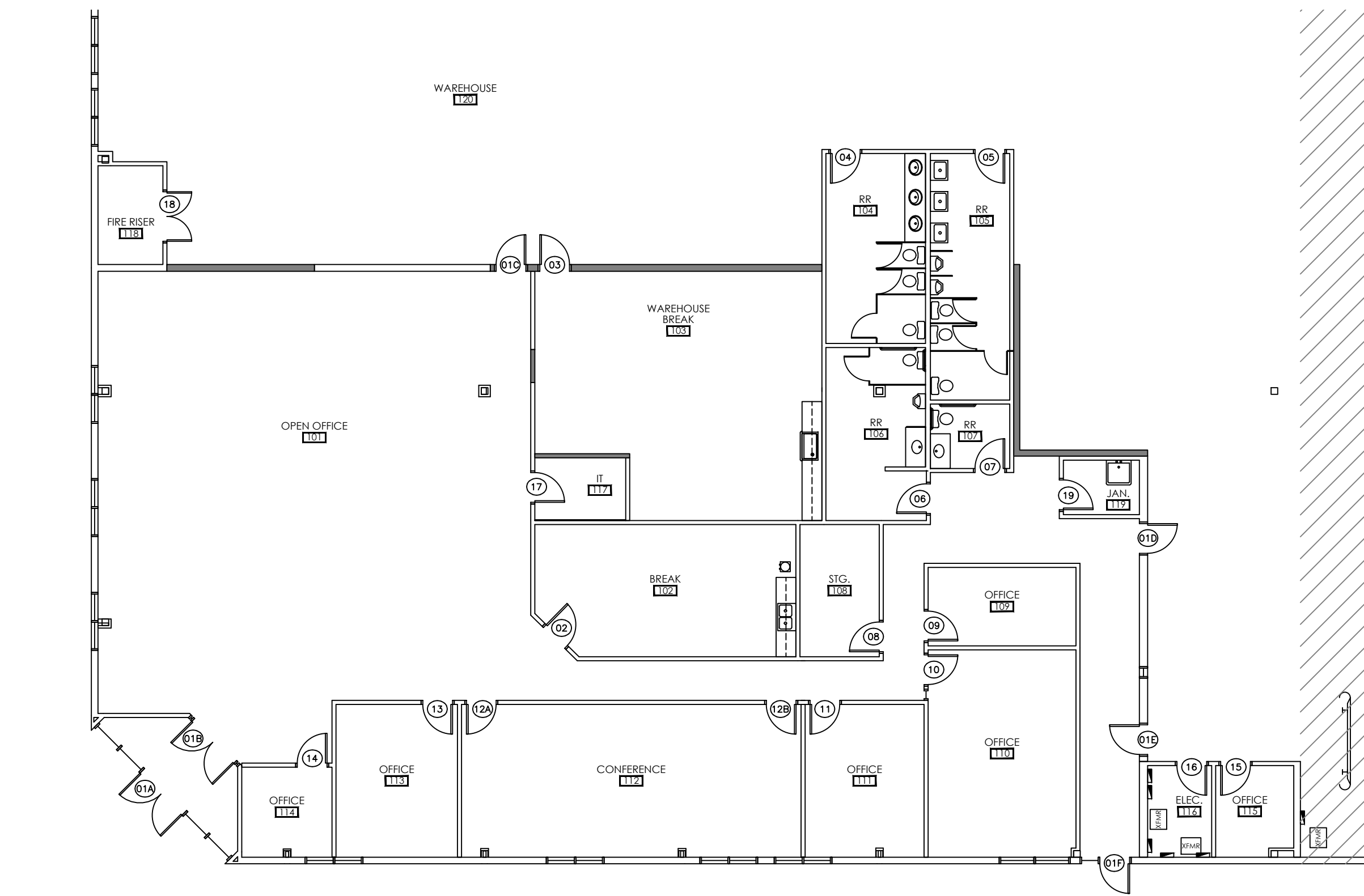
REVISIONS

MARK	DATE	DB	DESCRIPTION

PROJECT NUMBER
2026.017

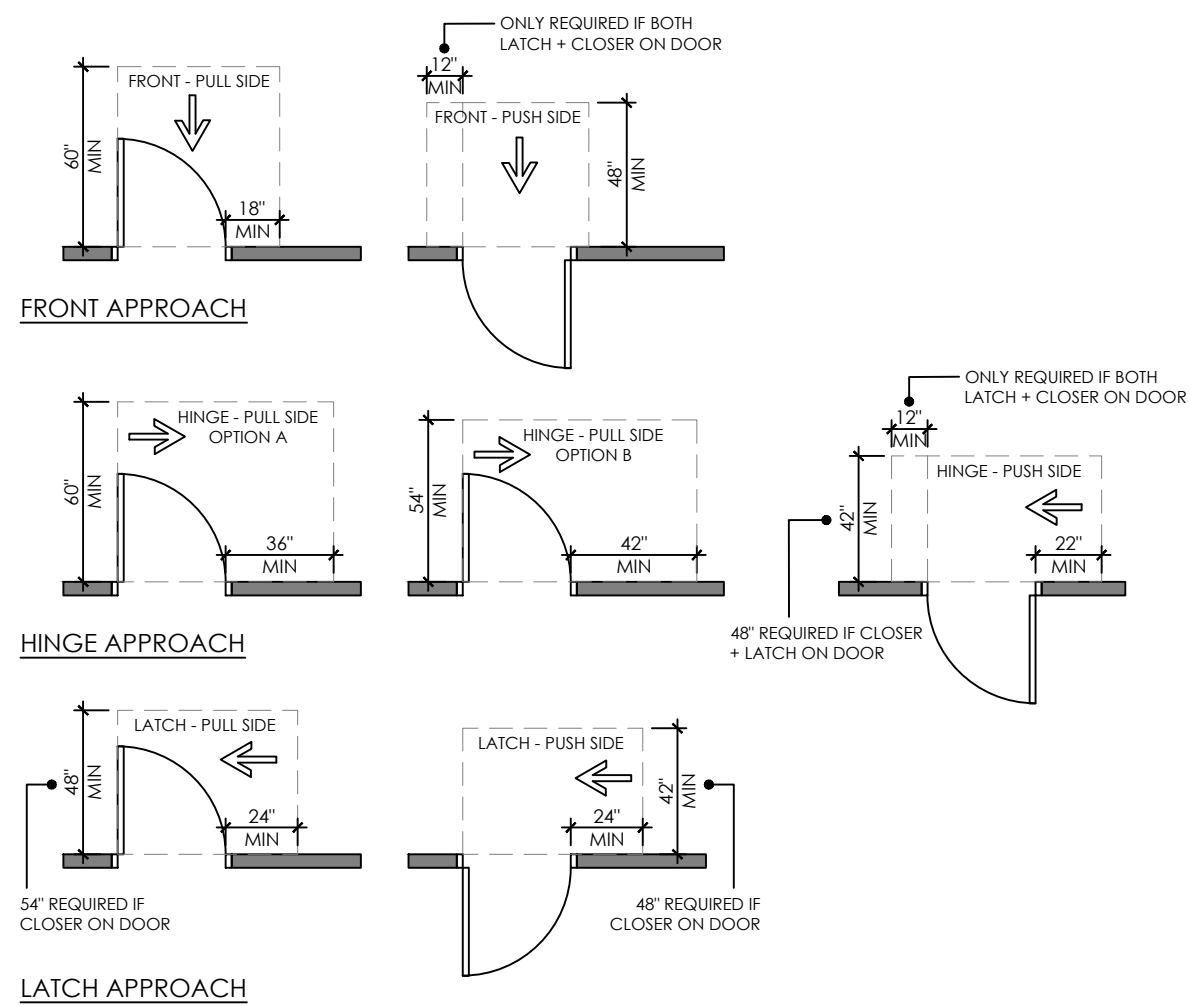
PROJ. MGR DRAWN BY
MS TMK

1ST FLOOR FINISH PLAN
A131



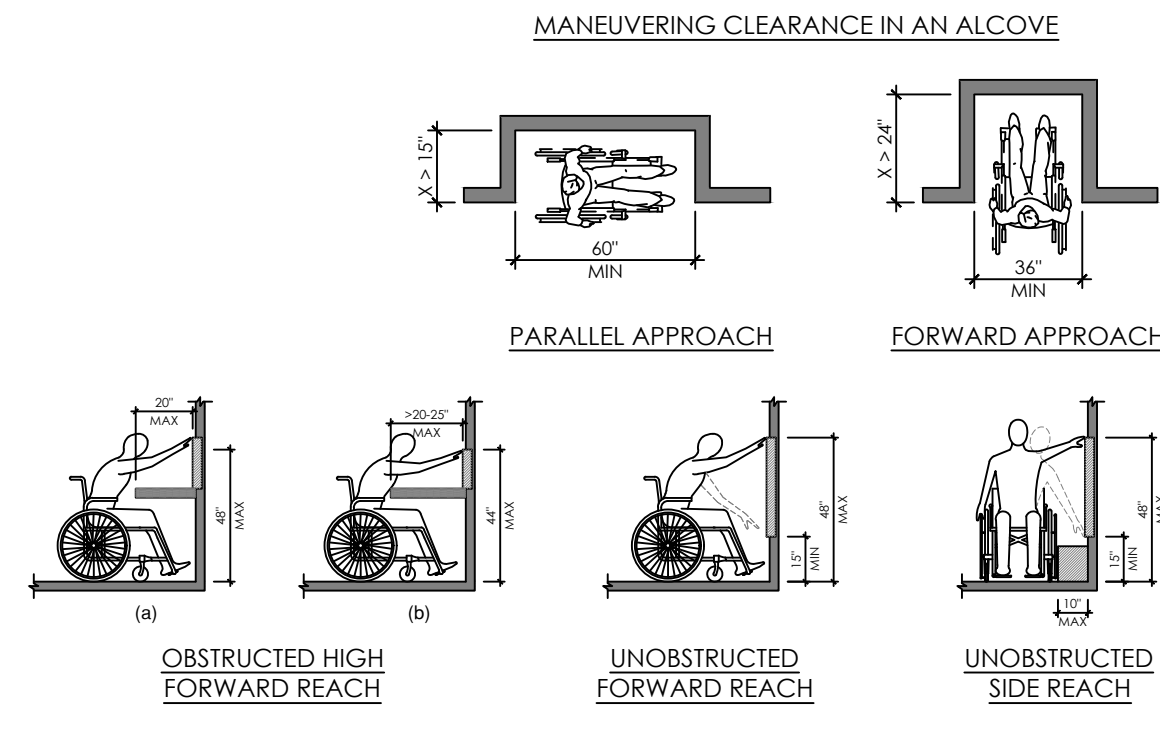
FLOOR PLAN
NOT TO SCALE

1
A211



DOOR CLEARANCES
NOT TO SCALE

2
A211



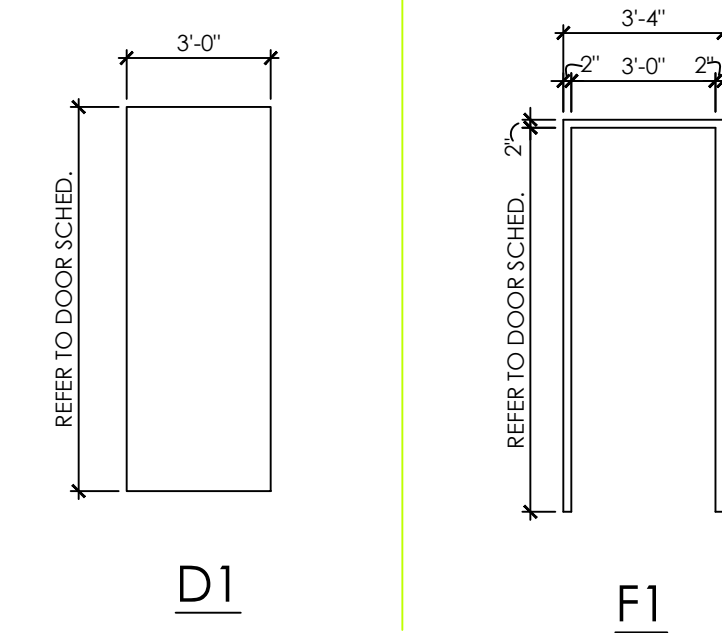
ADA CLEARANCES
NOT TO SCALE

3
A211

DOOR SCHEDULE

#		DIMENSIONS	DOOR				FRAME			HARDWARE	REMARKS
			SWING	TYPE	MATERIAL	FINISH	TYPE	MATERIAL	FINISH		
01A	EXISTING	--	--	--	--	--	--	--	--	--	
01B	EXISTING	--	--	--	--	--	--	--	--	--	
01C	RELOCATED	3'-0"x7'-0"x1 3/4"	RH	D1	--	--	F1	HOLLOW METAL	MATCH EXIST.	PS	R1
01D	EXISTING	--	--	--	--	--	--	--	--	--	R2
01E	EXISTING	--	--	--	--	--	--	--	--	--	R2
01F	EXISTING	--	--	--	--	--	--	--	--	--	
02	EXISTING	--	--	--	--	--	--	--	--	--	
03	RELOCATED	3'-0"x7'-0"x1 3/4"	LH	D1	--	--	F1	HOLLOW METAL	MATCH EXIST.	PS	R1
04	EXISTING	--	--	--	--	--	--	--	--	--	R2
05	EXISTING	--	--	--	--	--	--	--	--	--	R2
06	EXISTING	--	--	--	--	--	--	--	--	--	
07	EXISTING	--	--	--	--	--	--	--	--	--	
08	EXISTING	--	--	--	--	--	--	--	--	--	
09	EXISTING	--	--	--	--	--	--	--	--	--	
10	EXISTING	--	--	--	--	--	--	--	--	--	
11	EXISTING	--	--	--	--	--	--	--	--	--	
12A	EXISTING	--	--	--	--	--	--	--	--	--	
12B	EXISTING	--	--	--	--	--	--	--	--	--	
13	EXISTING	--	--	--	--	--	--	--	--	--	
14	EXISTING	--	--	--	--	--	--	--	--	--	
15	EXISTING	--	--	--	--	--	--	--	--	--	
16	EXISTING	--	--	--	--	--	--	--	--	--	
17	EXISTING	--	--	--	--	--	--	--	--	--	
18	EXISTING	--	--	--	--	--	--	--	--	--	
19	EXISTING	--	--	--	--	--	--	--	--	--	

DOOR/FRAME TYPES



REMARKS

- R1. DOOR, FRAME, AND HARDWARE MUST COMPLY WITH 1-HOUR RATED WALL ASSEMBLY (1-HOUR RATED DOOR AND FRAME).
- R2. CONFIRM EXISTING DOOR, FRAME, AND HARDWARE COMPLY WITH 1-HOUR RATED WALL ASSEMBLY (1-HOUR RATED DOOR AND FRAME).

HARDWARE LEGEND

- CL CLOSER (IF CLOSER AT ALL GLASS DOOR PROVIDE CONCEALED DORMA RTS88 BFI OR EQUAL)
- CH COAT HOOK
- CR CARD READER BY TENANT (N.I.C. - SEE NOTE 10 BELOW)
- DB DEADBOLT (MORTISED LOCK WITH SIMULTANEOUS RETRACTION)
- DL DUMMY LEVER
- EL ELECTROMAGNETIC LOCK
- ES ELECTRIC STRIKE BY TENANT (N.I.C.)
- FP FOOT PULL - STEP N PULL HANDS FREE DOOR OPENER SNPE-B
- H HOLD OPEN
- KP KICK PLATE
- KS KICK STOP
- OL OFFICE LOCKSET
- PH PANIC HARDWARE
- PL PRIVACY LOCKSET
- PP PUSH/PULL
- PS PASSAGE LATCHSET
- PV PIVOT HINGE
- RL ROLLER LATCHES
- SL STOREROOM LOCKSET
- TS TOP STRIKES

DOOR/FRAME NOTES

- REUSE DOORS FROM DECONSTRUCTION WHERE POSSIBLE. TOUCH UP EXISTING DOOR STAIN AS REQUIRED. PROVIDE NEW BUILDING STANDARD DOORS MATCHING EXISTING VENEER AS REQUIRED. STAIN/PAINT NEW DOORS TO MATCH EXISTING. PRE-MACHINE NEW DOORS FOR CYLINDRICAL LOCKSETS.
- PROVIDE NEW HARDWARE TO MATCH EXISTING ON NEW DOORS. REUSE EXISTING HARDWARE ON EXISTING DOORS WHERE POSSIBLE. FOR NEW DOOR HARDWARE, PROVIDE GRADE 2 MINIMUM BUILDING STANDARD. PROVIDE ADA ACCESSIBLE LEVER HANDLES ON NEW LOCK AND LATCHSETS.
- PROVIDE NEW BUILDING STANDARD FRAMES AS REQUIRED. REUSE EXISTING FROM DEMOLITION WHERE POSSIBLE. CONTRACTOR IS RESPONSIBLE FOR VERIFYING EXISTING WALL STUD SIZE ALLOWS FRAMES TO BE REUSED WITH NEW WALL CONSTRUCTION. IF FRAMES ARE NOT BEING REPAINTED, TOUCH UP EXISTING FRAMES TO BE REUSED.
- SEE DOOR SCHEDULE DETAILS FOR MANEUVERING CLEARANCES AT MANUAL SWINGING DOORS PER ANSI ICC A117.1-2009 SECTION 404.
- FRAME ALL DOOR ROUGH OPENINGS 4" FROM ADJACENT WALL CORNERS UNLESS OTHERWISE NOTED ON PLAN.
- REFER TO TENANT AND LANDLORD FOR KEYING REQUIREMENTS AND LOCKSETS.
- TENANT'S SECURITY VENDOR IS RESPONSIBLE FOR THE SPECIFICATION, PURCHASE, AND INSTALLATION OF ALL ACCESS CONTROLLED ELECTRONIC AND/OR MAGNETIC HARDWARE AND ASSOCIATED DEVICES. ALL SPECIFICATIONS AND INSTALLATIONS MUST COMPLY WITH THE INDIANA BUILDING CODE, CHAPTER 10, MEANS OF EGRESS.
- PROVIDE BUTT HINGES ON ALL DOORS AS FOLLOWS:
 - 7'-0" HT. TO HAVE 3 HINGES
 - GREATER THAN 7'-0" IN HT. TO HAVE 4 HINGES
 - FINISH TO MATCH HARDWARE SET
- PROVIDE (1) SET OF SILENCERS ON ALL DOOR FRAMES UNLESS OTHERWISE NOTED.
- PROVIDE WALL STOP (FLOOR STOP WHERE APPLICABLE) AT EACH DOOR UNLESS OTHERWISE NOTED. PROVIDE BLOCKING BEHIND WALL STOP.
- SECURITY VENDOR MUST INSTALL ACCESS CONTROL EQUIPMENT PRIOR TO FINAL INSPECTION (COORDINATE WITH CONTRACTOR). IF TIMELINE IS NOT MET, ALL REQUIRED EXIT DOORS MUST BE OPERABLE FOR CODE COMPLIANT EGRESS AT ALL TIMES.

Schott design
8888 Keystone Crossing, Suite 100
Indianapolis, IN 46240
p. 317.387.1700
www.schottdesign.com

THIS DRAWING, AND THE IDEAS, DESIGNS AND CONCEPTS CONTAINED HEREIN, ARE THE EXCLUSIVE INTELLECTUAL PROPERTY OF SCHOTT DESIGN, INC., AND ARE NOT TO BE USED OR REPRODUCED IN WHOLE, OR IN PART, WITHOUT THE WRITTEN CONSENT OF SCHOTT DESIGN.

SPEC SUITE
915 WESTERN DRIVE
INDIANAPOLIS, IN 46241

ISSUE

DATE	DESCRIPTION
02.17.26	REVIEW SET

REVISIONS

MARK	DATE	DB	DESCRIPTION

PROJECT NUMBER
2026.017
PROJ. MGR DRAWN BY
MS TMK

1ST FLOOR
DOOR SCHEDULE,
DETAILS
A211

LEGEND

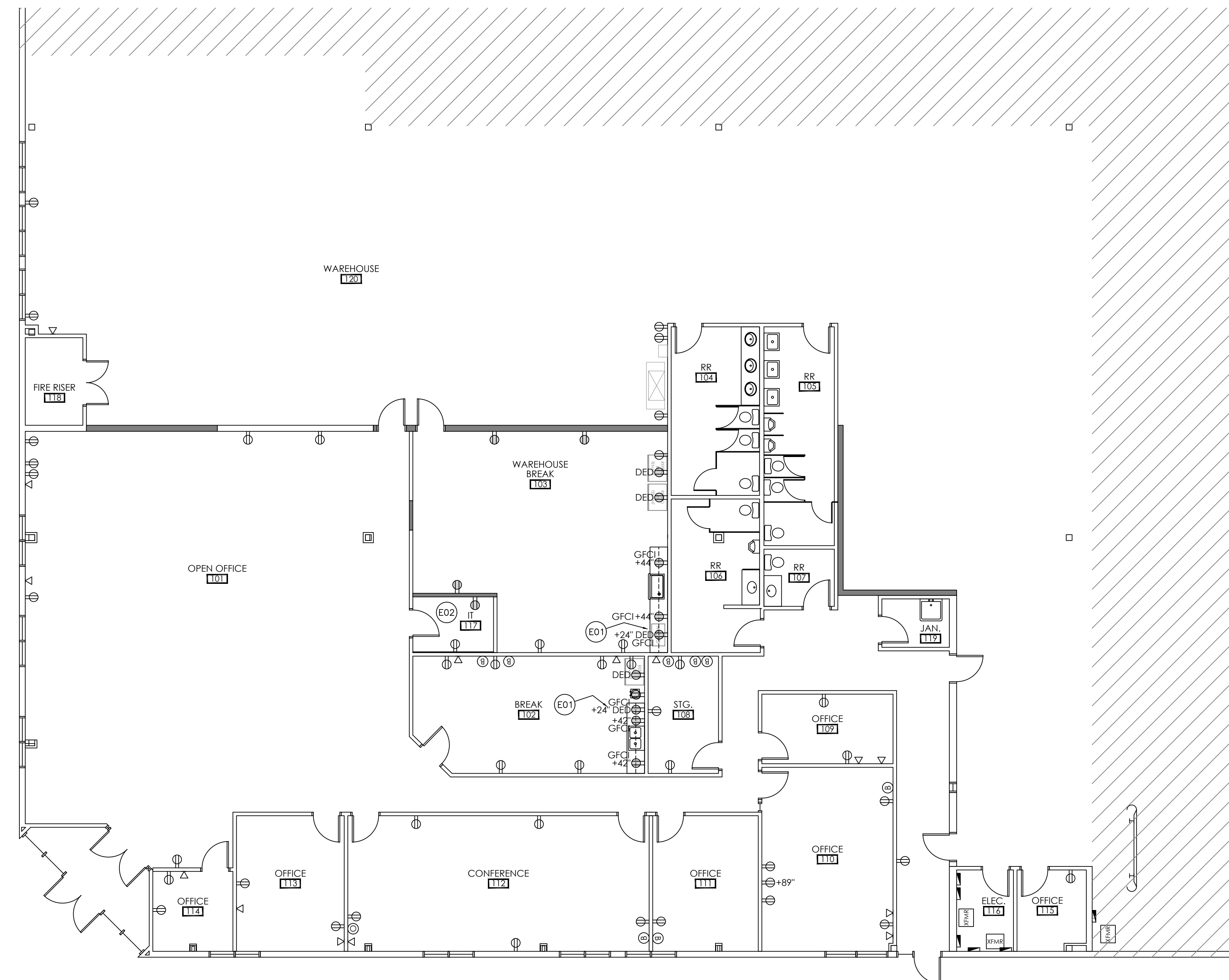
NEW CONSTRUCTION	EXISTING TO REMAIN
POWER OUTLET, DUPLEX	POWER OUTLET, DUPLEX
POWER OUTLET, QUADRUPLEX	POWER OUTLET, QUADRUPLEX
JUNCTION BOX	JUNCTION BOX
CEILING MOUNTED JUNCTION BOX	CEILING MOUNTED JUNCTION BOX
BOX, BLANK COVER PLATE	BOX, BLANK COVER PLATE
BOX, OPEN	BOX, OPEN
PROVIDE JUNCTION BOX ABOVE CEILING FOR POWER POLE CONNECTION, POWER POLE BY OTHERS.	POWER AND DATA POLE
FLOOR BOX WITH POWER AND DATA, FLUSH MOUNTED	FLOOR BOX WITH POWER AND DATA, FLUSH MOUNTED
FLOOR BOX WITH JUNCTION BOX AND DATA, FLUSH MOUNTED	FLOOR BOX WITH JUNCTION BOX AND DATA, FLUSH MOUNTED
DATA/COMMUNICATION OUTLET (PROVIDE BOX AND PULL STRING ONLY)	DATA/COMMUNICATION OUTLET
DED DEDICATED CIRCUIT	
GFCI GROUND FAULT CIRCUIT INTERRUPT OUTLET	
+42" HEIGHT OF ELECTRICAL OR DATA DEVICE	

GENERAL NOTES

- TENANT'S FURNITURE VENDOR IS RESPONSIBLE FOR INSTALLATION OF FURNITURE AND FIELD VERIFICATION OF ALL CRITICAL DIMENSIONS.
- ALL OUTLETS ARE TO BE INSTALLED 18" MIN. A.F.F. TO THE CENTER OF THE DEVICE PER ADA GUIDELINES UNLESS NOTED OTHERWISE.
- REFER TO DOOR SCHEDULE AND COORDINATE WITH TENANT/OWNER REGARDING POWER LOCATIONS TO ACCOMMODATE ELECTRIC STRIKES, CARD READERS AND/OR MAG-LOCKS. CARD READERS ARE TYPICALLY INSTALLED BY THE TENANT'S SECURITY CONTRACTOR AND NOT SPECIFIED BY SDI.
- CONTRACTOR TO PROVIDE GFCI OUTLET FOR WATER HEATER AND AUTOMATIC SHUTOFF VALVES AS REQUIRED.
- ELECTRICAL WORK IS LIMITED TO A DESIGN-BUILD SCOPE AND IS OUTLINED IN THESE DRAWINGS. ALL ELECTRICAL WORK IS LIMITED TO ADDITIONS OR RELOCATIONS OF ELECTRICAL OUTLET DEVICES AND LIGHTING THAT DO NOT EXCEED THE CAPACITY OF THE EXISTING ELECTRICAL SERVICE IN THE BUILDING. ELECTRICAL CONTRACTOR IS TO NOTIFY APPLICABLE PARTIES IF ADDITIONAL WORK IS REQUIRED SO THAT ADDITIONAL PLANS CAN BE FILED AND MUST COMPLY WITH ALL APPLICABLE CODES.
- ALL EXISTING AND NEW DEVICES AND FACE PLATES TO BE WHITE. REPLACE WITH NEW AS REQUIRED.

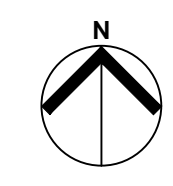
PLAN NOTES

- E01 PROVIDE DEDICATED POWER OUTLET IN RECESSED BOX INSET INTO CABINET/ WALL FOR TENANT'S MICROWAVE, CENTERED AT 24" AFF.
- E02 COORDINATE IT REQUIREMENTS WITH TENANT.



AREA NOT IN CONTRACT
 AREA OF WORK

ELECTRICAL PLAN
 0 2 4 8 16'



schott design
 8888 Keystone Crossing, Suite 100
 Indianapolis, IN 46240
 p. 317.387.1700
 www.schottdesign.com

THIS DRAWING, AND THE IDEAS, DESIGNS AND CONCEPTS CONTAINED HEREIN, ARE THE EXCLUSIVE INTELLECTUAL PROPERTY OF SCHOTT DESIGN, INC., AND ARE NOT TO BE USED OR REPRODUCED IN WHOLE, OR IN PART, WITHOUT THE WRITTEN CONSENT OF SCHOTT DESIGN.

SPEC SUITE
 915 WESTERN DRIVE
 INDIANAPOLIS, IN 46241

ISSUE	
DATE	DESCRIPTION
02.17.26	REVIEW SET

REVISIONS			
MARK	DATE	DB	DESCRIPTION

PROJECT NUMBER
 2026.017
PROJ. MGR DRAWN BY
 MS TMK

1ST FLOOR ELECTRICAL PLAN
E111