

# NOW PRE-LEASING

Retail Center | ±9,000 SF

# NAI Earle Furman



\*Conceptual Rendering. Actual Building may differ from what is shown

123 Spartanburg Hwy  
Lyman, SC 29365

## Property Features

- ±9,000 SF retail center
- Expected delivery in Q1 of 2027
- Drive-thru End-Cap capabilities
- Warm vanilla shell delivery
- Located in High Growth Corridor
- Excellent visibility on Highway 29
- ±26,300 VPD
- ±11 miles to Downtown Spartanburg
- ±16 miles to Downtown Greenville
- Call Broker for Pricing



Grayson Atkins

Associate

864.316.0702

gatkins@naiearlefurman.com

1 Real Estate Way | Spartanburg, SC 29302

864.398.4444 | [www.naiearlefurman.com](http://www.naiearlefurman.com)

Mike Tanbonliong II

Senior Associate

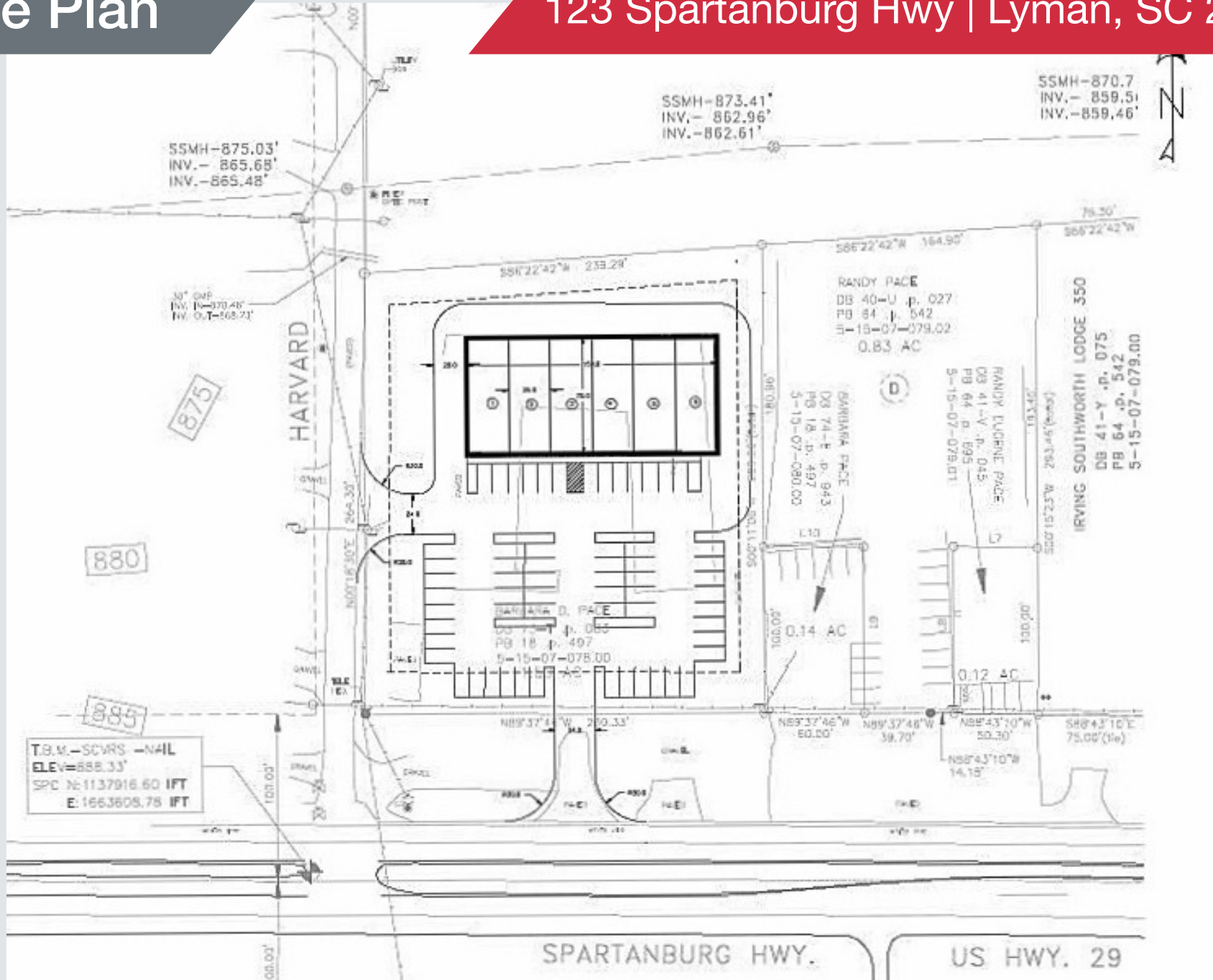
864.357.1136

mtan@naiearlefurman.com

The information contained herein is deemed reliable but is not guaranteed. NAI Earle Furman makes no warranties or representations regarding the accuracy, completeness, or reliability of the information. All parties are encouraged to independently verify all details, including but not limited to property condition, terms, and financial projections. Prices, terms, and availability are subject to change without notice.

# Site Plan

123 Spartanburg Hwy | Lyman, SC 29365



Grayson Atkins  
Associate  
864.316.0702  
gatkins@naiearlefurman.com

1 Real Estate Way | Spartanburg, SC 29302  
864.398.4444 | www.naiearlefurman.com

Mike Tanbonliong II  
Senior Associate  
864.357.1136  
mtan@naiearlefurman.com

The information contained herein is deemed reliable but is not guaranteed. NAI Earle Furman makes no warranties or representations regarding the accuracy, completeness, or reliability of the information. All parties are encouraged to independently verify all details, including but not limited to property condition, terms, and financial projections. Prices, terms, and availability are subject to change without notice.

# Retail Map

123 Spartanburg Hwy | Lyman, SC 29365



Grayson Atkins  
Associate  
864.316.0702  
gatkins@naiearlefurman.com

1 Real Estate Way | Spartanburg, SC 29302  
864.398.4444 | [www.naiearlefurman.com](http://www.naiearlefurman.com)

Mike Tanbonliong II  
Senior Associate  
864.357.1136  
mtan@naiearlefurman.com

The information contained herein is deemed reliable but is not guaranteed. NAI Earle Furman makes no warranties or representations regarding the accuracy, completeness, or reliability of the information. All parties are encouraged to independently verify all details, including but not limited to property condition, terms, and financial projections. Prices, terms, and availability are subject to change without notice.