



**FOR LEASE**

**Available  
15,181 SF**

Main St

**For more info:**

**Ajay Kalavala: 469-389-0213**

**Srini Dodda: 469-630-1361**

**Aj.Kalavala@gmail.com**

**FRISCO, TX**

**MAIN ST. COMMONS**

**Southeast Quadrant of  
COIT RD & MAIN ST  
(North Facing)**

# MAIN ST. COMMONS



## Overview

- ❑ Now Pre-Leasing 15,181 Sf For Retail/Restaurant Space - [Fall 2023 Delivery](#)
- ❑ Retail, Office And Medical Complex With Multiple Entrances With Open Space, Seating, Garden, Water Fountain Areas.
- ❑ Approx' 4200 Residential Units Are In Development In A 2.5 Mile Radius With Addit'l 6500 Residential Units Planned Within 1.5 Miles (Incl' Within 3200 Acre Brinkmann Ranch)
- ❑ Diagonal To Future Frisco High School Which Will Make 5 High Schools Within 1.5 Miles Of Site

- ❑ Coit Rd Will Be Widened From 4 Lanes To 6 Lanes From Main St To Hwy 121
- ❑ Over 16,170 Residents Within 1 Mile, With An Average Hh Income Of \$187,900

## Traffic Counts:

Main Street : 26,443 VPD  
Coit Road : 24,824 VPD

# MAIN ST. COMMONS



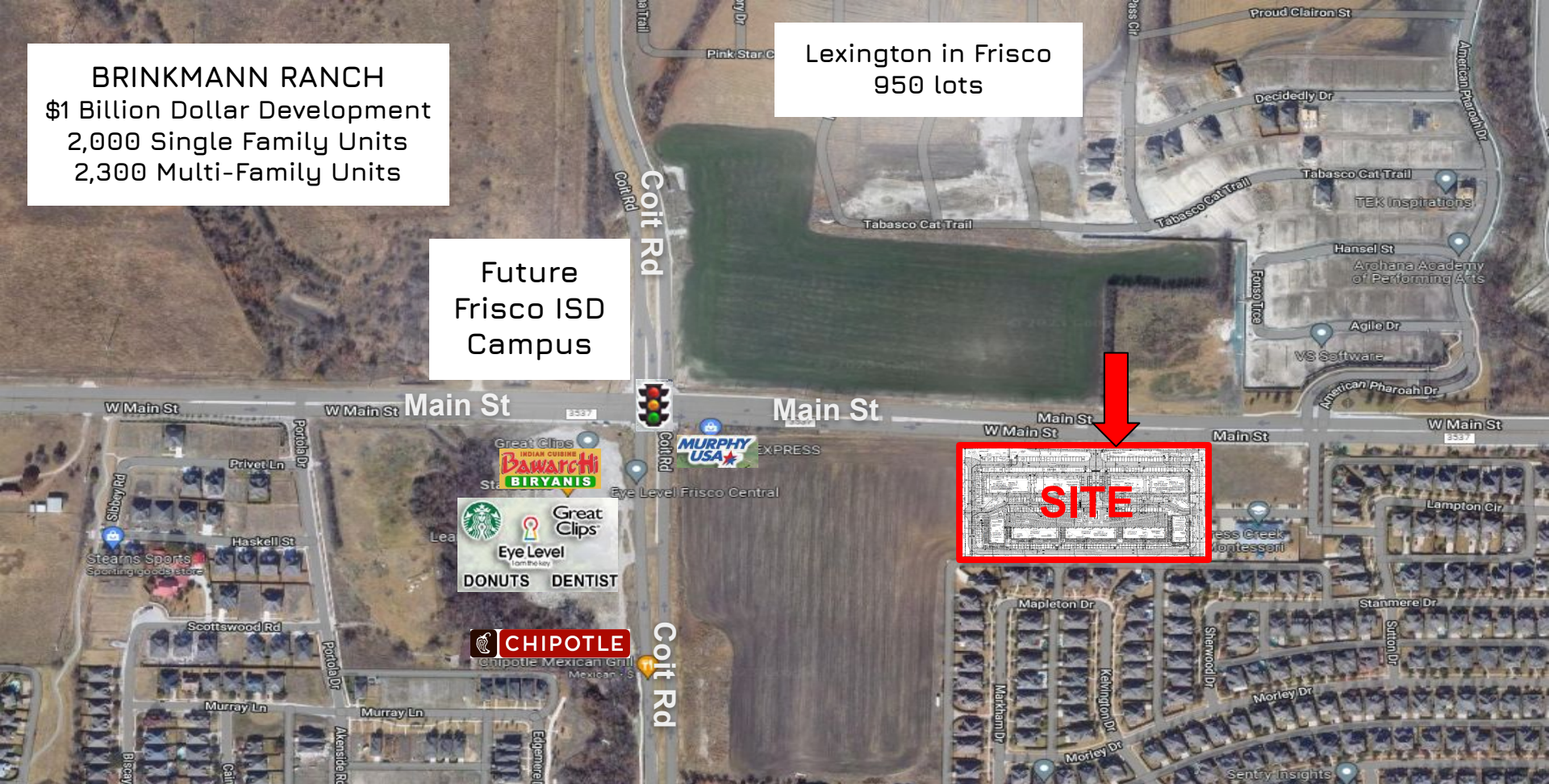
- Corner Spaces Available For The 2 Buildings
- Both Building Corners Have Main St Direct Access
- Building 3 Faces The Main Entrance To The Complex And Has Exterior Premium Seating Space In The Side With Brick Pavers And Raised Planters



**BRINKMANN RANCH**  
\$1 Billion Dollar Development  
2,000 Single Family Units  
2,300 Multi-Family Units

Future  
Frisco ISD  
Campus

Lexington in Frisco  
950 lots



# MAIN ST. COMMONS

**Brinkmann Ranch  
Development Includes  
2000 Single Family Units  
2300 Multi-Family Units**

24,824 VPD  
Coit Rd

**Lexington in  
Frisco  
950 Lots**

**Independence H.S.  
~2,100 Students**

**Future  
Frisco ISD  
Campus**

**Estates at  
Shaddock Park  
479 Lots**

**SITE**

Main St  
26,443 VPD

**Future  
Catholic School**

**The Grove  
(Newland)  
1700 Lots  
1400 MF Units**

**Bacchus  
Community  
Park**

**Edgewood  
354 Lots**

**Liberty H.S.  
~2000 Students**

Rolater Rd

**Centennial H.S.  
~2,000 Students**

Rolater Rd

# MAIN ST. COMMONS