

615 YONGE STREET

Ed Seagram*

Vice President

+1 416 815 2377

edward.seagram@cbre.com

Shayla Esakov

Sales Representative

+1 647 965 6966

shayla.esakov@cbre.com

*Sales representative



AVAILABILITY DETAILS

\$29.50 Year 1,
with escalations

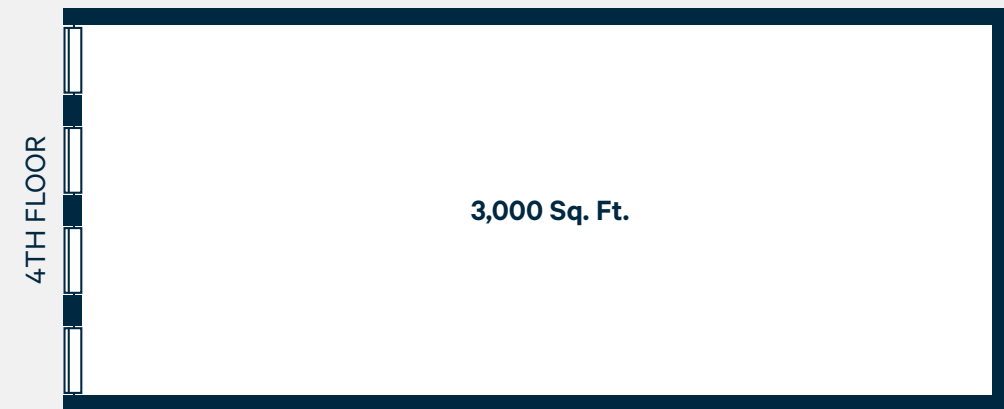
Available Space:	SUITE	SQ. FT.
	200	2,985
	401	1,170
	402	760
	405	250

Semi - Gross Rent: \$29.50 Year 1, with escalations
(hydro and in-suite janitorial extra | heat is included)

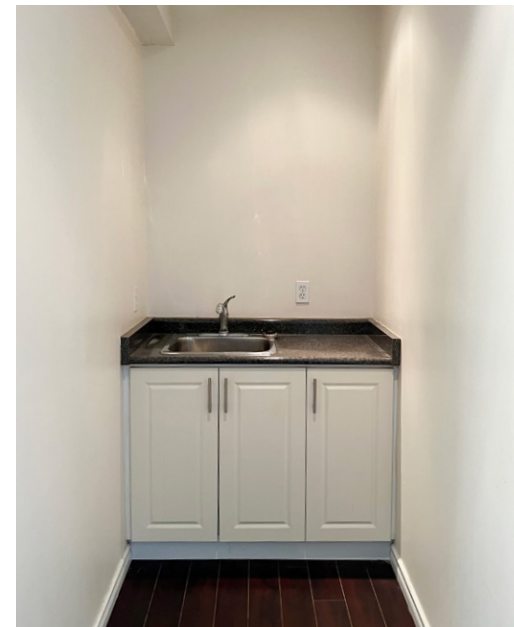
Features: Great value on Yonge Street, near Subway (between Bloor and Wellesley)
new elevator installed five years go

2nd Floor Full floor
Built out with great street visibility

FLOOR PLANS



SUITE 400



615 YONGE STREET

Ed Seagram*
Vice President
416 815 2377

edward.seagram@cbre.com

Shayla Esakov
Sales Representative
647 965 6966

shayla.esakov@cbre.com

*Sales Representative