

**BERKSHIRE
HATHAWAY**

LAFHEY
INTERNATIONAL
REALTY

COMMERCIAL SERVICES

[CLICK TO VIEW
ON WEBSITE](#)



MEDICAL BUILDING FOR SALE
864 W JERICHO TPKE
HUNTINGTON | NY

PROPERTY SUMMARY

Berkshire Hathaway Commercial Services is honored to have been selected as the **Exclusive Brokerage** representing the sale of **864 W Jericho Turnpike in Huntington, NY**. This is a very unique offering that is ripe for a **medical user** that can benefit from having an onsite **Operating Room**. Currently the building is occupied by **Associated Plastic Surgeons and Consultants**, who will be vacating upon a sale.

864 W. Jericho offers **9000 SF of Class A medical space** divided over **two floors**. As you enter the building you will be pleasantly surprised by the **exquisite waiting and reception area**. You will feel as if you entered the living room of a multi million dollar home. Attention to detail is everywhere making the first impression a lasting one. From the **featured wooden paneled wall, to the high end furniture and even the high hat lighting** that fills the room, your clients will know immediately they have entered a first class facility. As you approach the reception area you will undoubtedly notice the **high end finishes** that offers a **custom tiled counter with granite countertops** that continue throughout the entire office.

The remainder of the first floor offers **multiple consultation/exam rooms, a smaller Operating Room, multiple executive offices, an administrative office area, four bathrooms and endless storage**. All of which have been finished with the utmost attention to detail.

As you enter the **custom finished elevator** you will once again notice the fine woodwork which makes up the interior of the elevator cab. As you exit the elevator to the lower level, you feel as if you have entered the **waiting room to a high end hospital**. Again, the **artwork, furniture and overall finishes** resemble something out of a country club not a surgical center. It is here that you will find the **Main Operating Room** and all it offers. From the **overhead surgery lights to the valves and other components that are used to control the gases** and ensure the safe administration of anesthesia. The remainder of the lower level offers **recovery rooms, as well as additional treatment rooms** currently used for a **MedSpa**. There is also **additional storage** for convenience.

As part of the offering there is a **vacant medical suite of approximately 1000 SF**. You could either rent it separately to offset your building expenses or combine the space with the main suite to allow for **even more usable space**. The vacant suite can be accessed separately or attached to the main space based on your needs.

This is a tremendous opportunity to acquire not only a medical building but a **full blown, in house surgical center**. Imagine having to reposition an existing office building to include everything you have at 864 W Jericho Turnpike. **It's all here. Please call us to set up a walk through and experience this high end facility for yourself.**

ASKING PRICE

\$4,500,000

PROPERTY INFORMATION

BUILDING SIZE

9,000 SF

4,500 SF PER FLOOR

STORIES

2

YEAR BUILT

1995

ZONING

C-6

PARKING

26 SPOTS

LOT SIZE

0.62 AC

CONSTRUCTION TYPE

MASONRY

[CLICK TO VIEW
ON WEBSITE](#)

EXPENSES

TAXES **\$40,430**

NATIONAL GRID (GAS) **\$4,752**

PSEG (ELECTRIC) **\$13,824**

INSURANCE **\$16,167**

TOTAL EXPENSES: \$75,173

[CLICK TO VIEW
ON WEBSITE](#)

AREA OVERVIEW

864 W Jericho Tpke

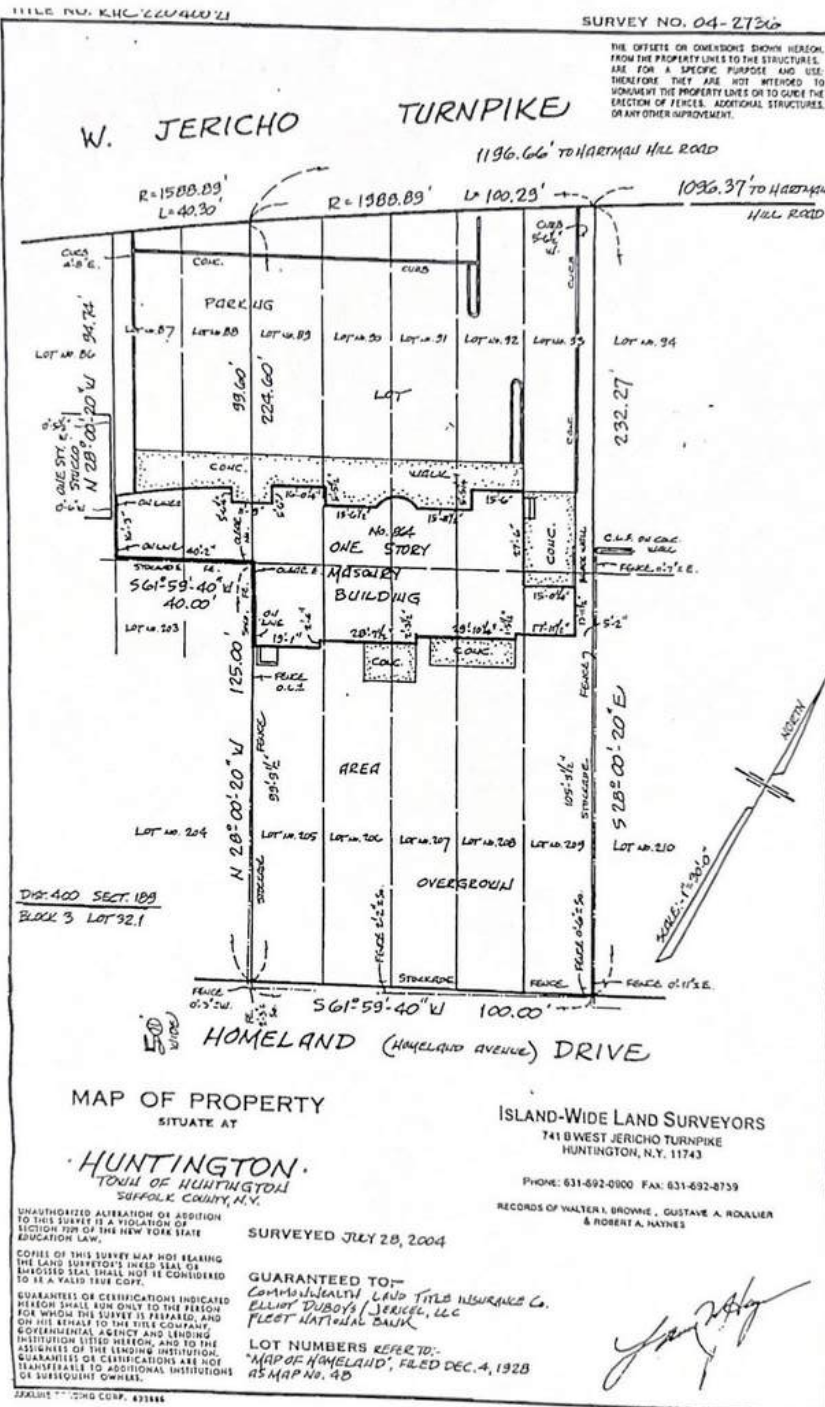


**BERKSHIRE
HATHAWAY**

LAFFEY
INTERNATIONAL
REALTY

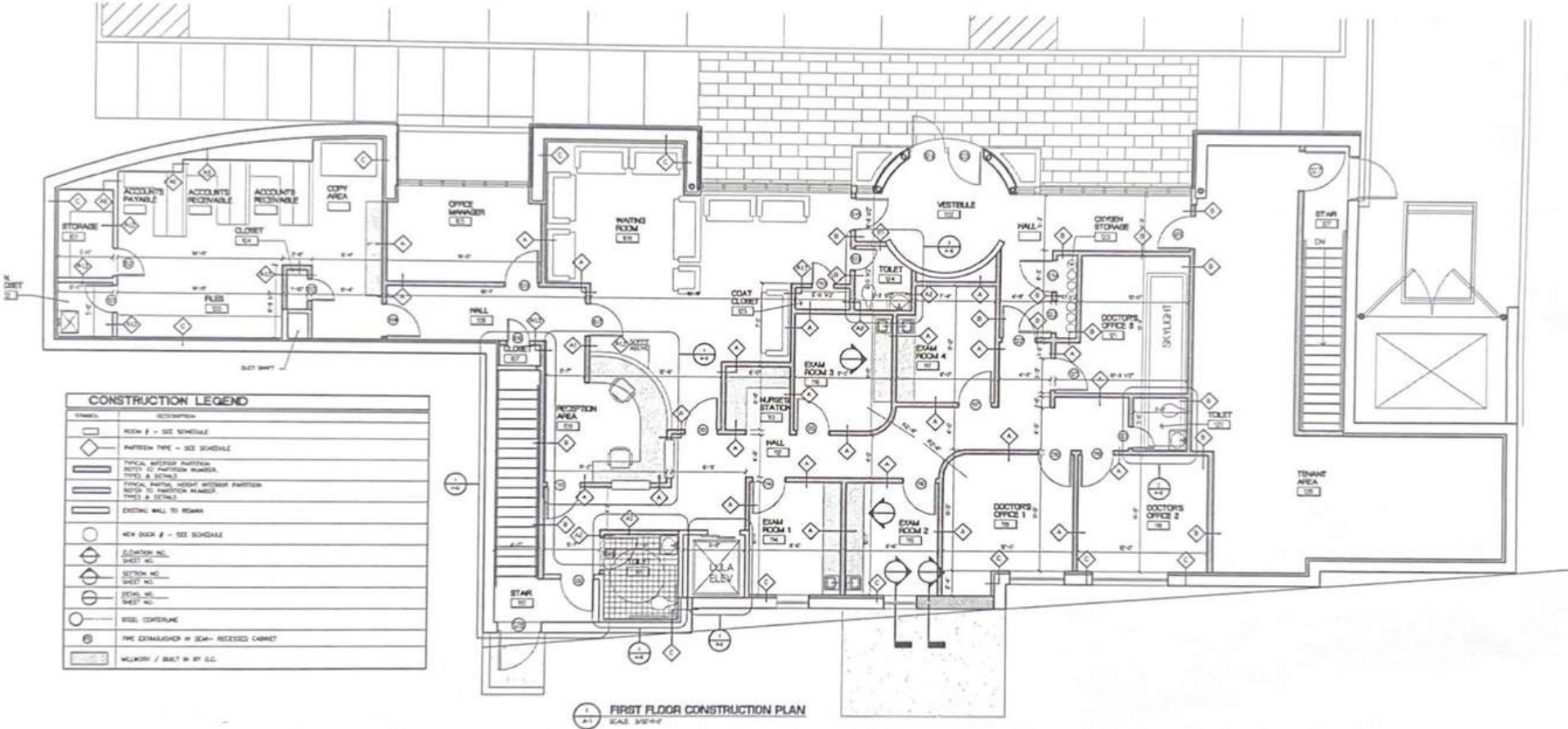
COMMERCIAL SERVICES

SURVEY



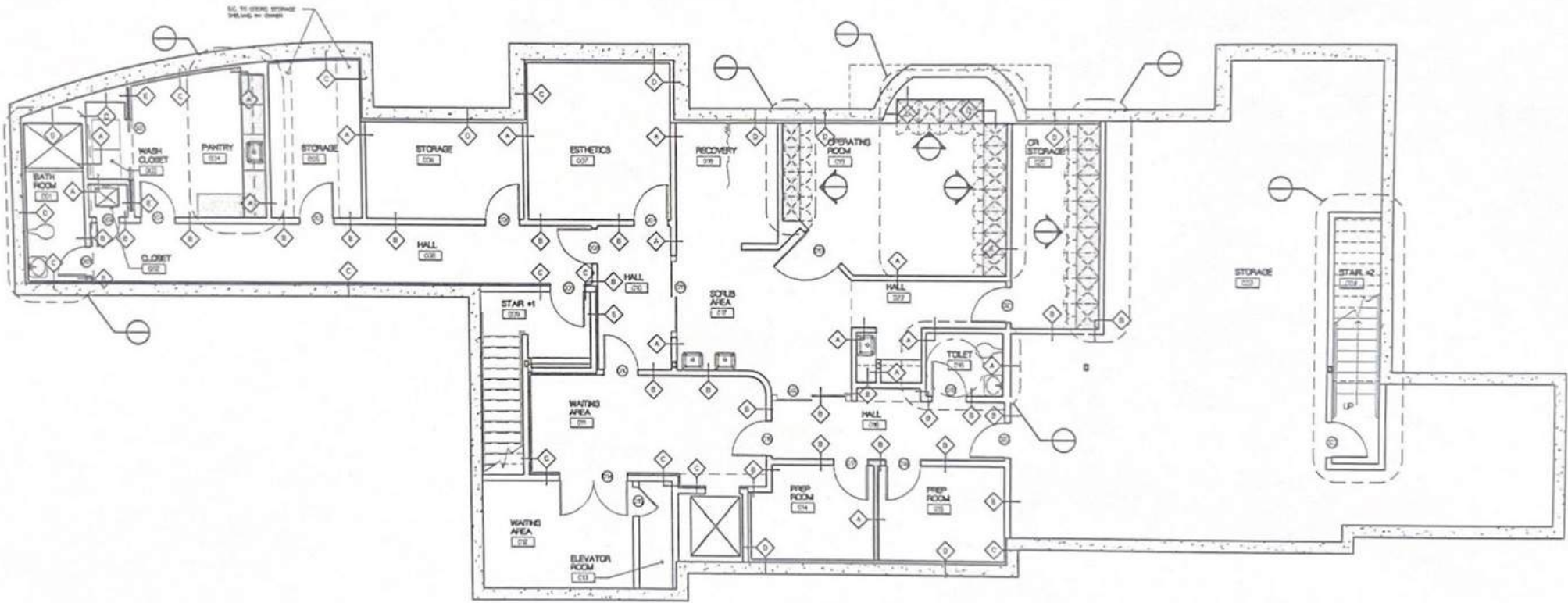
[CLICK TO VIEW ON WEBSITE](#)

FLOOR PLANS



[CLICK TO VIEW
ON WEBSITE](#)

FLOOR PLANS



1 LOWER LEVEL CONSTRUCTION PLAN
SCALE 3/8"=1'-0"

WALLS AND PARTITIONS	
1. SPLITTER - Standard face of exterior wall	6201-62
2. SPLITTER - Standard face of interior wall	2001-62
3. NET SPEED - Standard face of exterior wall	2006-62
4. NET SPEED - Standard face of interior wall	6215-62
5. NET SPEED - Standard face of exterior wall	6216-62
6. NET SPEED - Standard face of interior wall	6217-62

[CLICK TO VIEW
ON WEBSITE](#)

VIRTUAL TOUR

CLICK HERE

**To view a 360° Virtual Tour
of this property**





Upstairs Waiting Room



Reception Area



4 Upstairs Bathrooms



3 Private Offices



3 Identical Exam Rooms



Upstairs OR



Countless Storage Space



Administrative Offices



OR Entrance



Downstairs OR



Recovery Room



Downstairs Storage



Esthetician Room



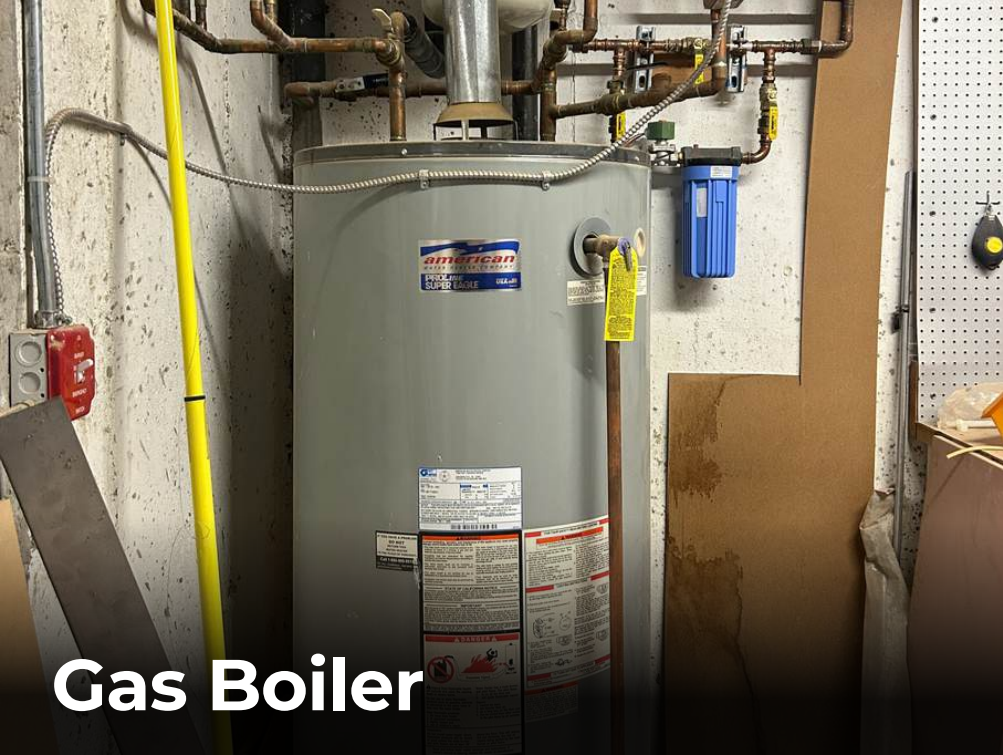
Break Room



Downstairs Waiting Area



Built-In Elevator



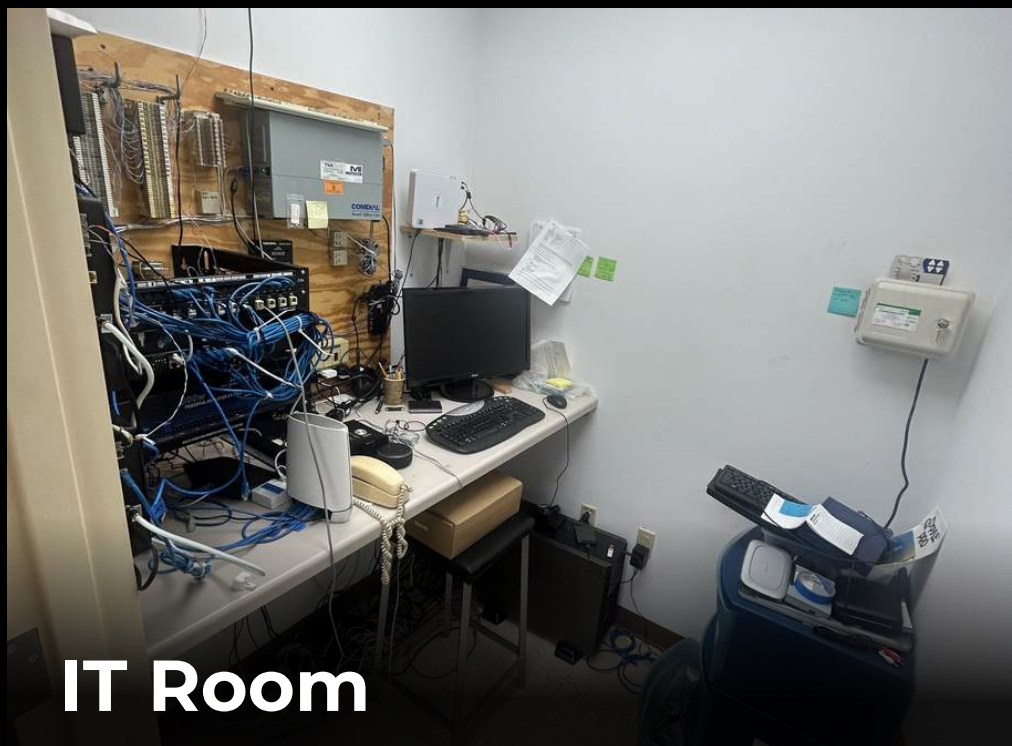
Gas Boiler



Electrical Panels



Electrical Meter



IT Room

GUY CANZONERI

MANAGING PARTNER

Guy@bhhs-commercial.com

Office: 516 703 2300 ext. 208

Cell: 516 607 7722

CHRISTIAN STANDERWICK INVESTMENT SALES

Christian@bhhs-commercial.com

Office: 516 703 2300 ext. 202

Cell: 917 202 6290

FRANK MANNINO INVESTMENT SALES

Frank@bhhs-commercial.com

Office: 516 703 2300 ext. 203

Cell: 917 696 7396

RYAN GOLDSMITH INVESTMENT SALES

Ryan@bhhs-commercial.com

Office: 516 703 2300 ext. 204

Cell: 516 369 8408

STEVEN BOOTZ INVESTMENT SALES

Steven@bhhs-commercial.com

Office: 516 703 2300 ext. 207

Cell: 631 809 1917

MARK ABDELMESSIH INVESTMENT SALES

Mark@bhhs-commercial.com

Cell: 347 244 2009

LARRY MATARESE INVESTMENT SALES

Larry@bhhs-commercial.com

Office: 516 703 2300 ext. 205

Cell: 516 945 4733

MIKE CHIMENTI MARKETING & COMMUNICATIONS

Mike@bhhs-commercial.com

Office: 516 703 2300

Cell: 347 237 3599

**BERKSHIRE
HATHAWAY**

LAFHEY
INTERNATIONAL
REALTY

COMMERCIAL SERVICES

**BHHS-COMMERCIAL.COM
INFO@BHHS-COMMERCIAL.COM
OFFICE: 516 703 2300**

Disclaimer

The information herein does not constitute an offer, representation, or warranty, and Berkshire Hathaway Home Services cannot and does not guarantee the completeness or accuracy of any information contained herein. Prospective purchasers should independently verify all information pertaining to the subject property, and may do so through, among other sources, available public records from the applicable municipality.