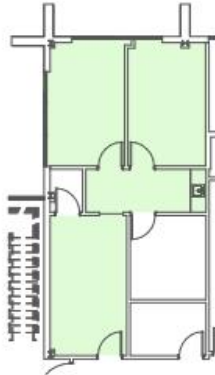
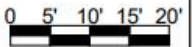


FIRST FLOOR
SUITE 170



TENANT AREA	COMMON (16%)	RENTABLE AREA
582 SF	93 SF	676 SF

1" = 20' 



4021 AMBASSADOR CAFFERY PKWY
LAFAYETTE, LA 70503

CONTACT:
CHAMPION REAL ESTATE SERVICES
100 RUE IBERVILLE, SUITE 200
LAFAYETTE, LA 70508
(337) 593-0444



ZILER
ARCHITECTS
A PROFESSIONAL
ARCHITECTURAL
CORPORATION
JAMES O. ZILER, ARCHITECT
SEAN R. PRIMEAUX, ARCHITECT
101 Calco Boulevard
Lafayette, Louisiana 70503
Ph: 337-269-6326

FIRST FLOOR



07/10/24