



8585 W 135th St
Overland Park, KS 66223

For Lease

**Two BRAND NEW Retail
Buildings Available**

- Two Brand New Buildings:
 - 11,558SF
 - 5,068 SF
- Perfect for medical office, daycare, or professional users
- Generous Tenant Improvement Allowances available
- 57K Combined Traffic count at 135th and Antioch intersection
- Outlot to movie theater
- Nearby high school, sports complex, daily needs shopping
- High income, high growth area in Johnson County

Jayne Miller

Vice President

jayne.miller@jll.com

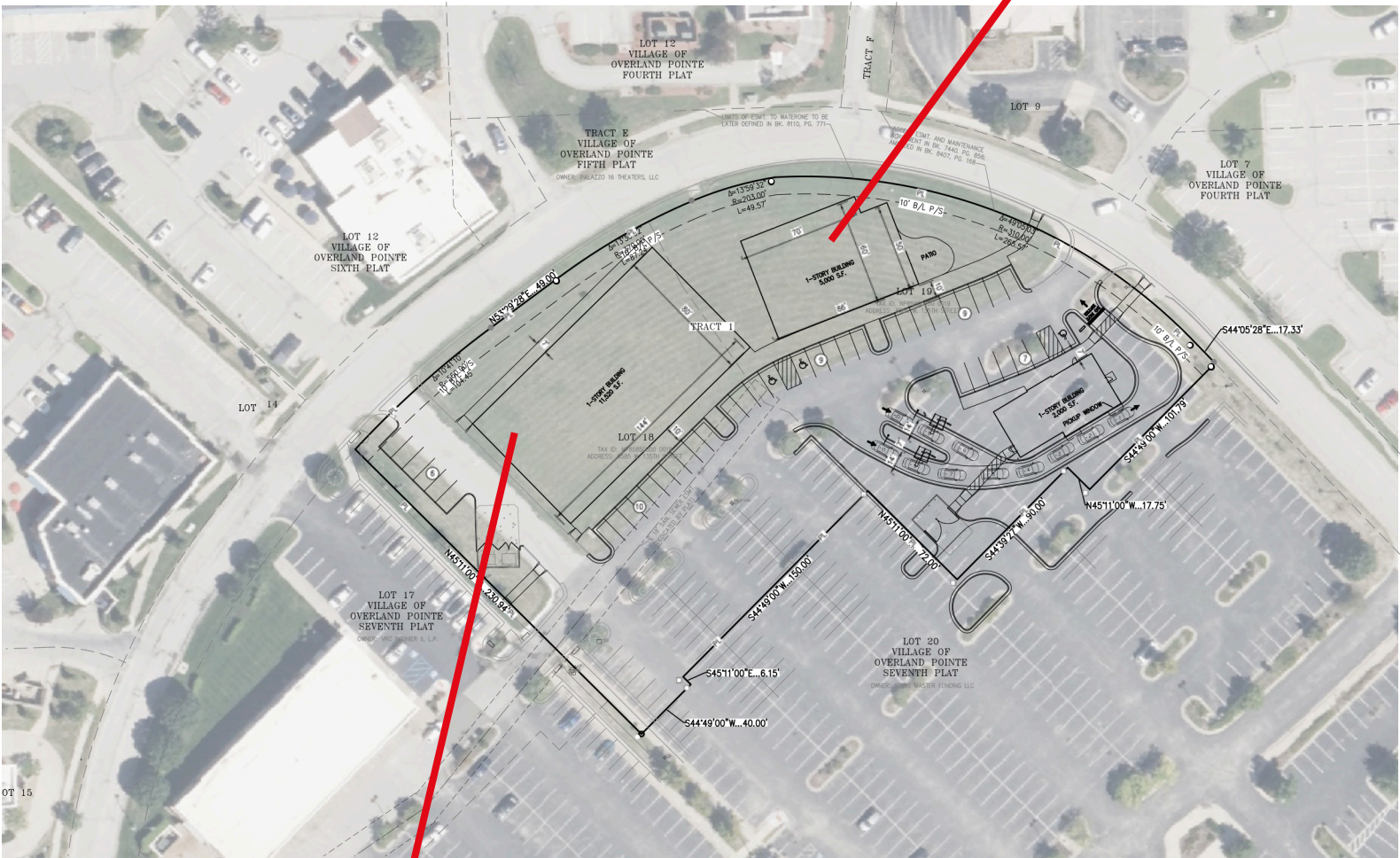
+1 816 261 2006

jll.com/kansas-city

Jones Lang LaSalle Brokerage, Inc.

8565 W 135th St, Overland Park, KS 66223

Site plan



8585 W 135th St, Overland Park, KS 66223
Surrounding Area & Demographics



413 Unit
Multifamily

Average household income		
1-mile	3-miles	5-miles
\$152,079	\$168,903	\$166,347

Estimated population		
1-mile	3-miles	5-miles
11,175	95,498	212,434

Jayne Miller
Vice President
jayme.miller@jll.com
+1 816 261 2006

jll.com/kansas-city
Jones Lang LaSalle Brokerage, Inc.