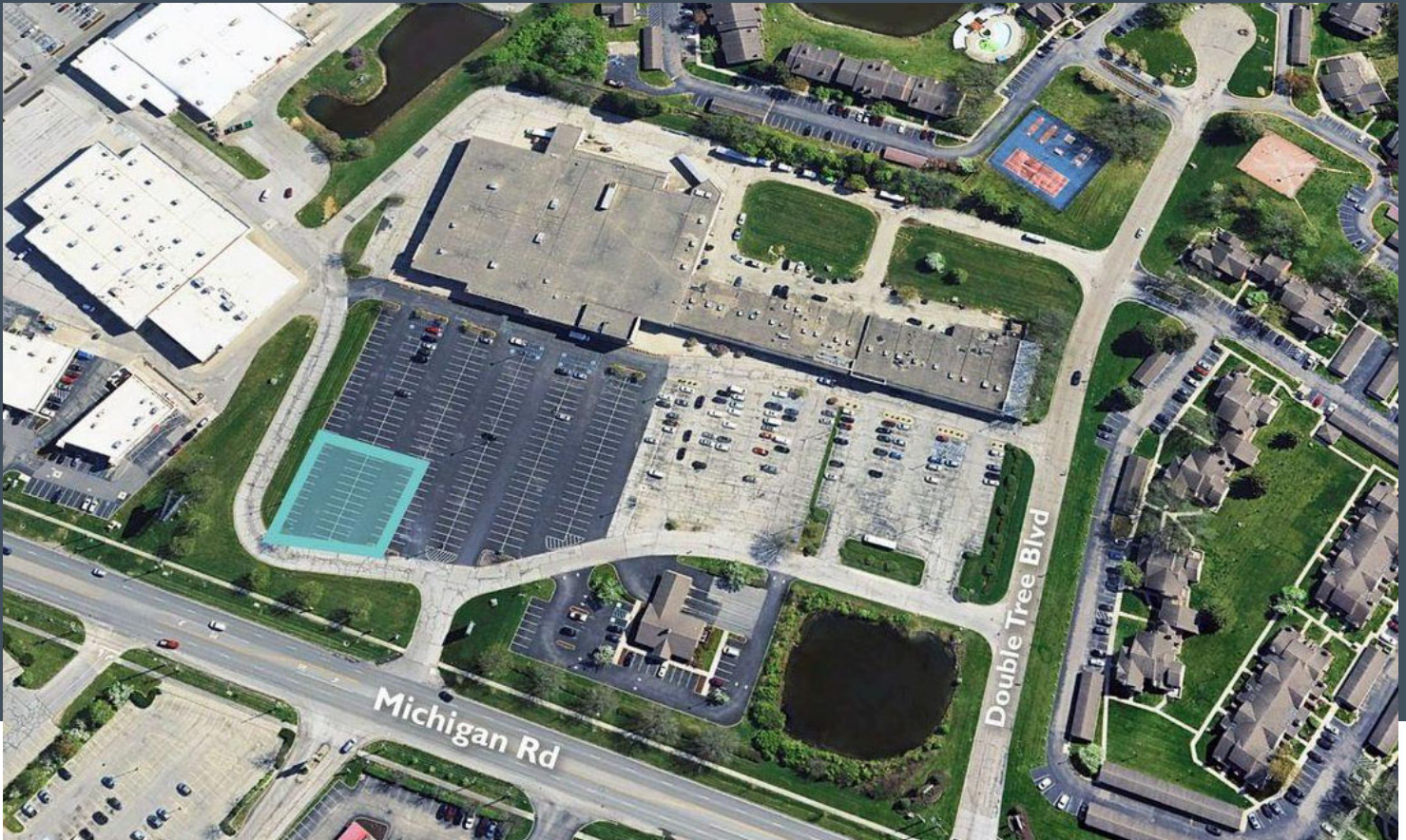


For Lease



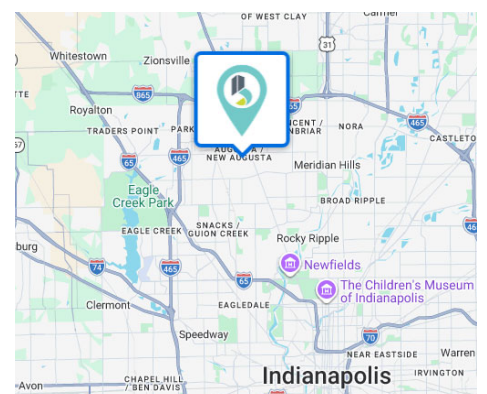
8401 Michigan Road

Indianapolis, IN, 46268

Spaces:	Outlot
Lease Rate:	Negotiable
Size:	0.3 - 0.5 Acres

Highlights

- Well located in major retail hub (Walmart, Sams, Costco, etc.)
- North Michigan Road: 27,028 ADT
- Outlot size: 0.3 - 0.5 acres
- Potential building Size: 500 - 1,000 SF
- C-3 Zoning Permitted Uses: Light retail, restaurant, financial services, artisan food/beverage, medical, and veterinarian.



Kevin Dick
Senior Vice President
kdick@bradleyco.com
c. 317.213.6692

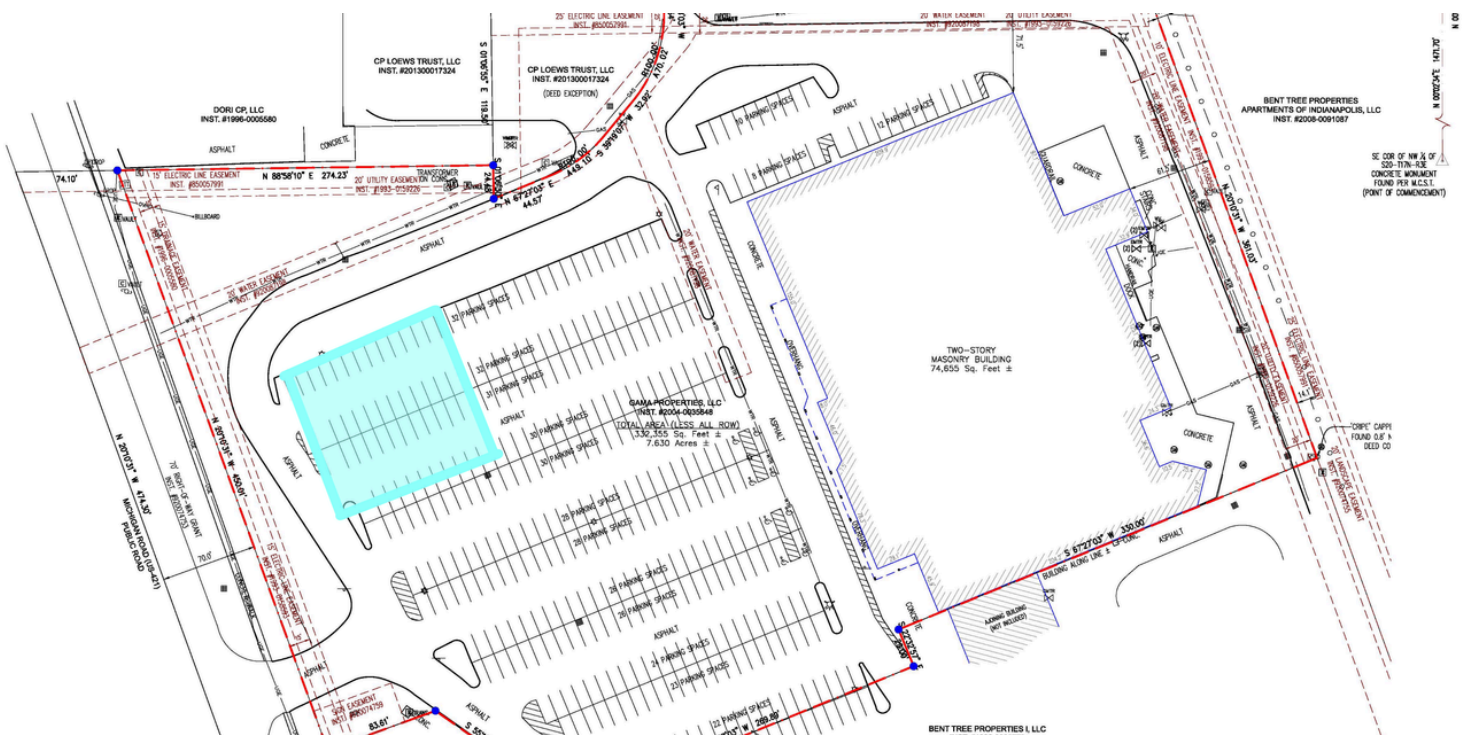
Demographics

8401 Michigan Road, Indianapolis, IN 46268

Demographics

	1 Miles	3 Miles	5 Miles
Total Population	10,571	62,667	153,944
Male Population	45.6%	47.0%	48.0%
Female Population	54.4%	53.0%	52.0%
Total Households	5,466	27,048	65,283
Average Household Size	1.92	2.29	2.33
Average Household Income	\$80,508	\$106,256	\$131,982
Median Home Value	\$180,556	\$220,388	\$264,524

ESRI forecasts for 2024
based on U.S. Census data



Aerial Map

8401 Michigan Road, Indianapolis, IN 46268

