

Colliers

FOR SALE

Palisades Corner Land

TBD Hwy 30 W, Fruitland, ID 83619

 *Price Reduced!*

Lincoln Hagood

+1 208 472 1667

lincoln.hagood@colliers.com

Nate Mack

+1 208 740 9213

nate.mack@colliers.com

Mike Peña

+1 208 472 1666

mike.pena@colliers.com

Bryant Jones

+1 208 472 1663

bryant.jones@colliers.com

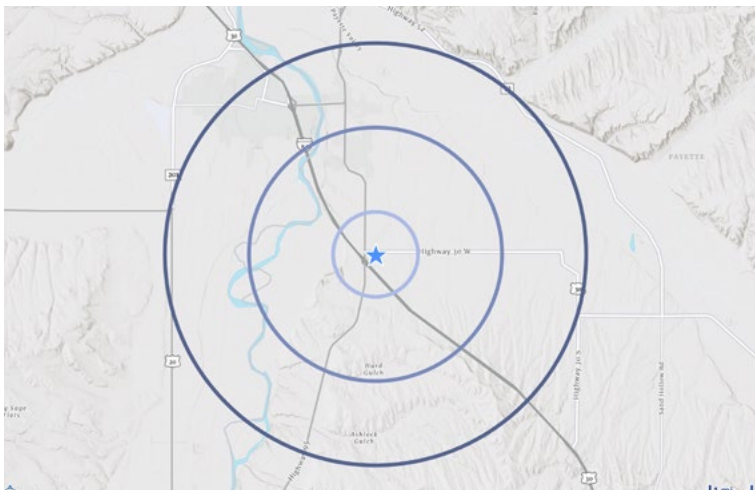
5700 E. Franklin Rd, Suite 205
Nampa, Idaho 83687
+1 208 472 1660
colliers.com/idaho

Property Overview

Property Type	Land
Land Size	10.27 Acres
Price	\$1,200,000
Location	Hwy 30, right off I-84
Parcel #	07N05W024951
Zoning	C-2
Property Access	<i>Call agent</i>

Highlights

- Great opportunity for commercial development
- Flexible C-2 zoning
- Utilities delivered to site
- Located in growing commercial and industrial area
- Palisades corner is a major junction for traffic headed Fruitland/Payette and further north and eastbound traffic headed towards New Plymouth
- Less than 1 minute drive to I-84
- Two access points: one off Auto Dr and one off Hwy 30
- Owner/user or developer/investor site



Demographics

	1 Mile	3 Miles	5 Miles
Population	298	5,637	19,527
Households	114	1,947	6,913
Average Household Income	\$97,618	\$94,582	\$80,452

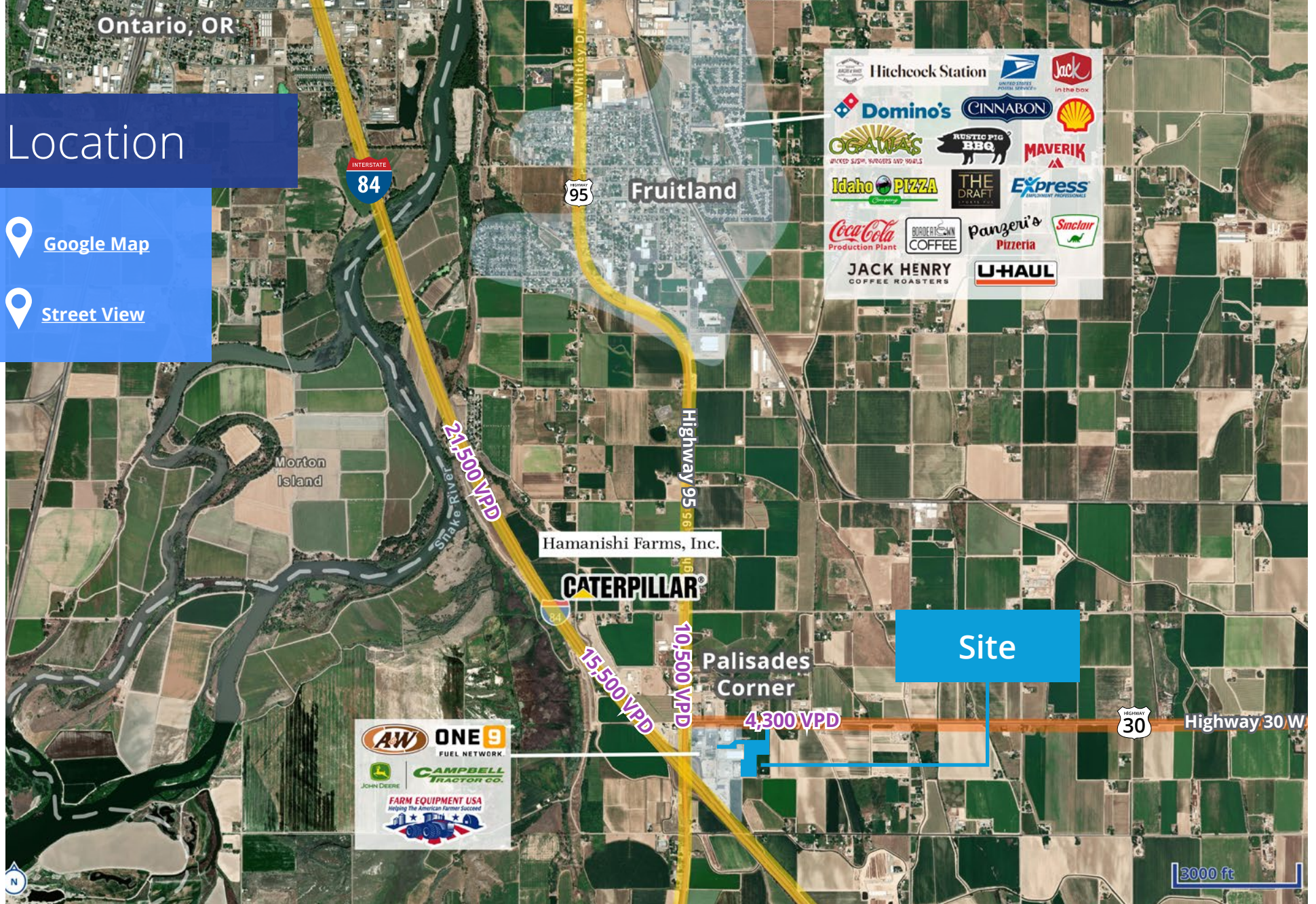
Property Gallery



Location

 [Google Map](#)

 [Street View](#)



5700 E Franklin Road, Suite 205
 Nampa, Idaho 83687
 +1 208 472 1660
 colliers.com/idaho

This document has been prepared by Colliers for advertising and general information only. Colliers makes no guarantees, representations or warranties of any kind, expressed or implied, regarding the information including, but not limited to, warranties of content, accuracy and reliability. Any interested party should undertake their own inquiries as to the accuracy of the information. Colliers excludes unequivocally all inferred or implied terms, conditions and warranties arising out of this document and excludes all liability for loss and damages arising therefrom. This publication is the copyrighted property of Colliers and / or its licensor(s). © 2026. All rights reserved. This communication is not intended to cause or induce breach of an existing listing agreement. Colliers Treasure Valley, LLC.