



# RETAIL SPACE FOR LEASE



**Sammamish  
Lakeside Plaza  
3302 E Lake Samm.  
Pkwy SE, Suite B  
Sammamish, WA  
98075**

SUHRCO manages a diverse portfolio of commercial and multifamily residential properties in the Puget Sound region. Established in 1973, the company employs more than 300 experienced professionals dedicated to meeting the management, leasing and brokerage needs of building owners, tenants, and condominium/homeowner association boards and owners.

## FEATURES

- 1,200 SF
- \$25/RSF, plus NNN's of approximately \$10.50/SF.
- Exposure from busy E. Lake Sammamish Pkwy traffic
- Minutes to Issaquah and Redmond

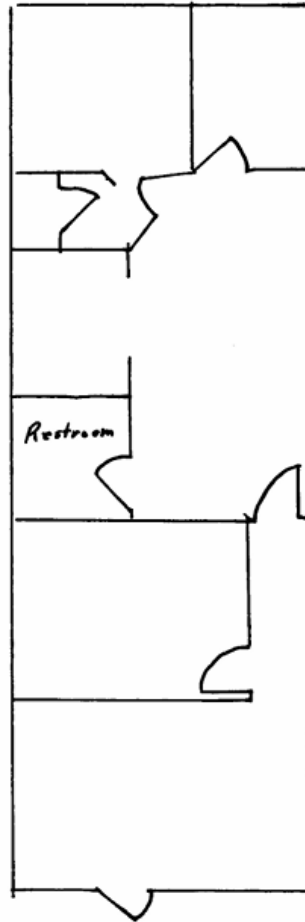
## Contact:

Peter Townsend, RPA®      Email: [petert@suhrco.com](mailto:petert@suhrco.com)  
Brian Howard                Email: [brianh@suhrco.com](mailto:brianh@suhrco.com)  
T: (425) 455-1950    F: (425) 462-1943  
2010 156th Avenue NE, Suite 100, Bellevue, WA 98007

**SUHRCO Management, Inc., AMO®**



# RETAIL SPACE FOR LEASE



**Sammamish Lakeside Plaza**  
**3302 E. Lake Sammamish Pkwy SE**  
**Sammamish, WA 98075**

Contact:  
Peter Townsend, RPA® Email: [petert@suhrco.com](mailto:petert@suhrco.com)  
Brian Howard Email: [brianh@suhrco.com](mailto:brianh@suhrco.com)

T: (425) 455-1950  
F: (425) 462-1943  
2010 156th Avenue NE, Suite 100

