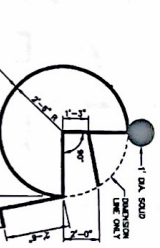
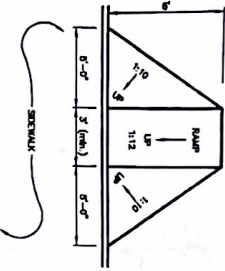


TYPICAL DIMENSIONS

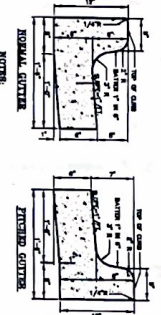
ITEM	MINIMUM	MAXIMUM
1. SIGN HEIGHT	18"	24"
2. SIGN WIDTH	12"	18"
3. SIGN POST HEIGHT	48"	60"
4. SIGN POST WIDTH	4"	6"
5. SIGN POST SPACING	12"	18"
6. SIGN POST BENCH	18"	24"
7. SIGN POST FINISH	AS NOTED	AS NOTED



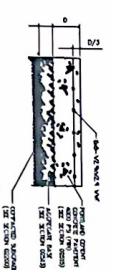
HANDICAP SYMBOL DETAIL
NO SCALE



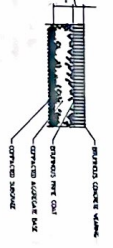
HANDICAP RAMP DETAIL
NOT TO SCALE



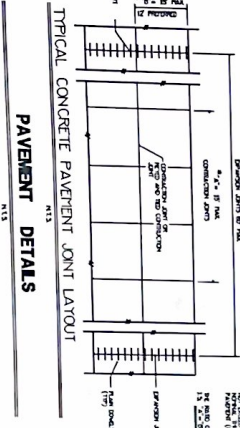
BARRIER TYPE CURB AND GUTTERS
NO SCALE



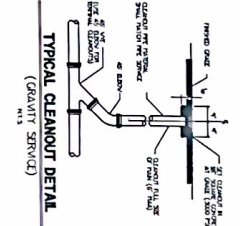
TYPE "I" PAVEMENT DETAIL
(PORTLAND CEMENT CONCRETE PAVEMENT)
N13



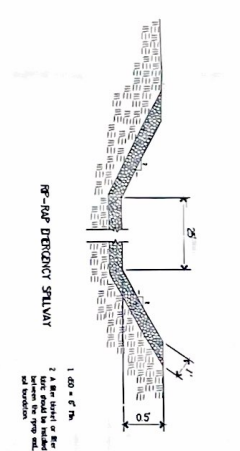
TYPE "III" PAVEMENT DETAIL (PAVING)
(CONTINUOUS CONCRETE PAVEMENT)
N13



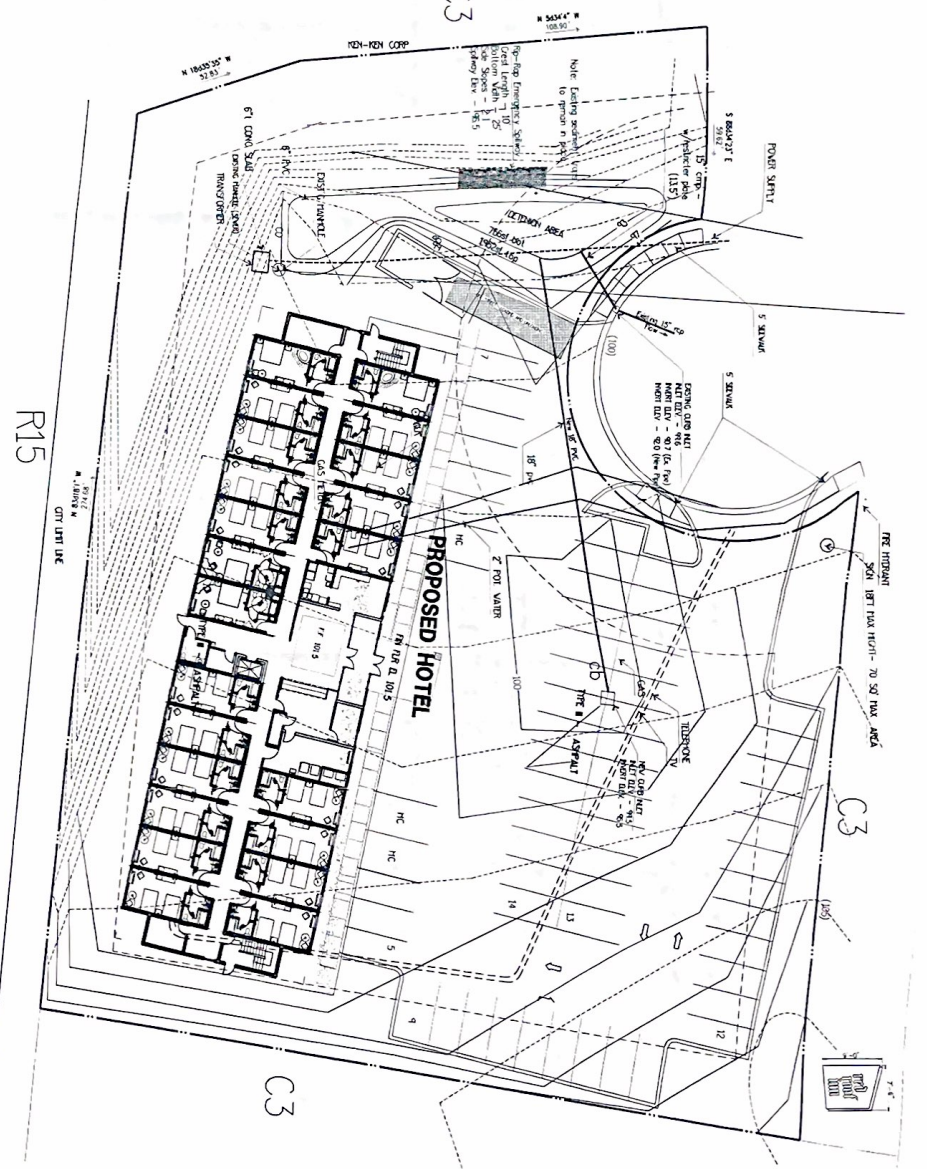
TYPICAL CONCRETE PAVEMENT JOINT LAYOUT
N13



TYPICAL CLEANOUT DETAIL
(GRAVEL SERVICE)
N13



RAMP DETAIL



R15

PROPOSED HOTEL

REDWOOD ENGINEERING

HENDERSONVILLE, NC

1" = 20'-0"

05/10/01

NO. 100

ARCHITECTURE PLANNING ENGINEERING CONSTRUCTION

2155

CV-100