

PRELIMINARY
NOT FOR
CONSTRUCTION

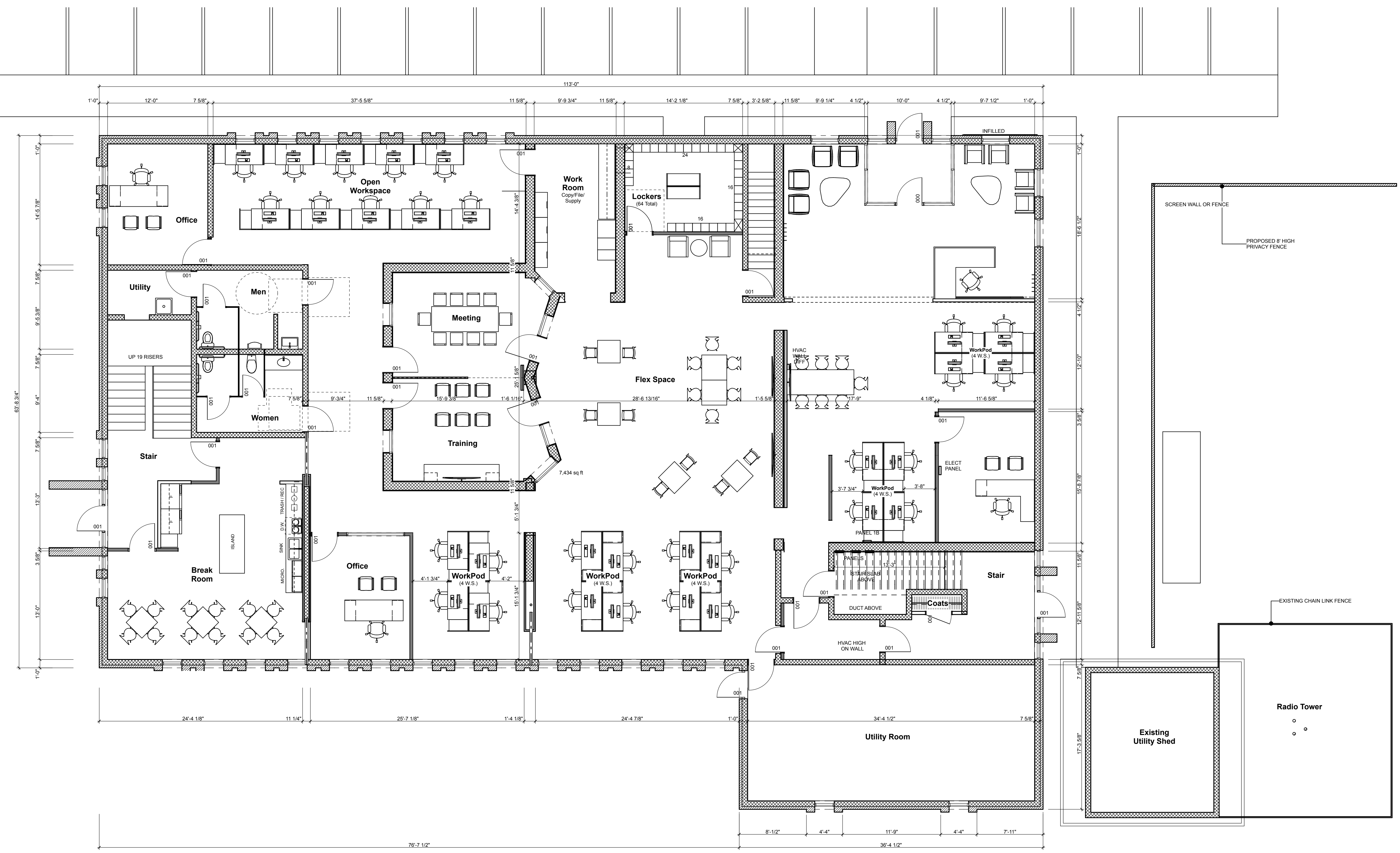
MAXAM
ARCHITECTURE
T (616) 308-9729
maxamarchitecture.com
1464 Fourth St NW
Grand Rapids MI 49504

Compass Insurance
280 Ann St, Grand Rapids MI
First Floor Plan

Revisions:

Project No: 216011
Issue Date: 12/16/16
Plot Date: 12/16/16
Reviewer: DRM
Drawn By: DRM

A-1



1. First Floor Plan
SCALE: 3/16" = 1'-0"
0' 2' 4' 8'