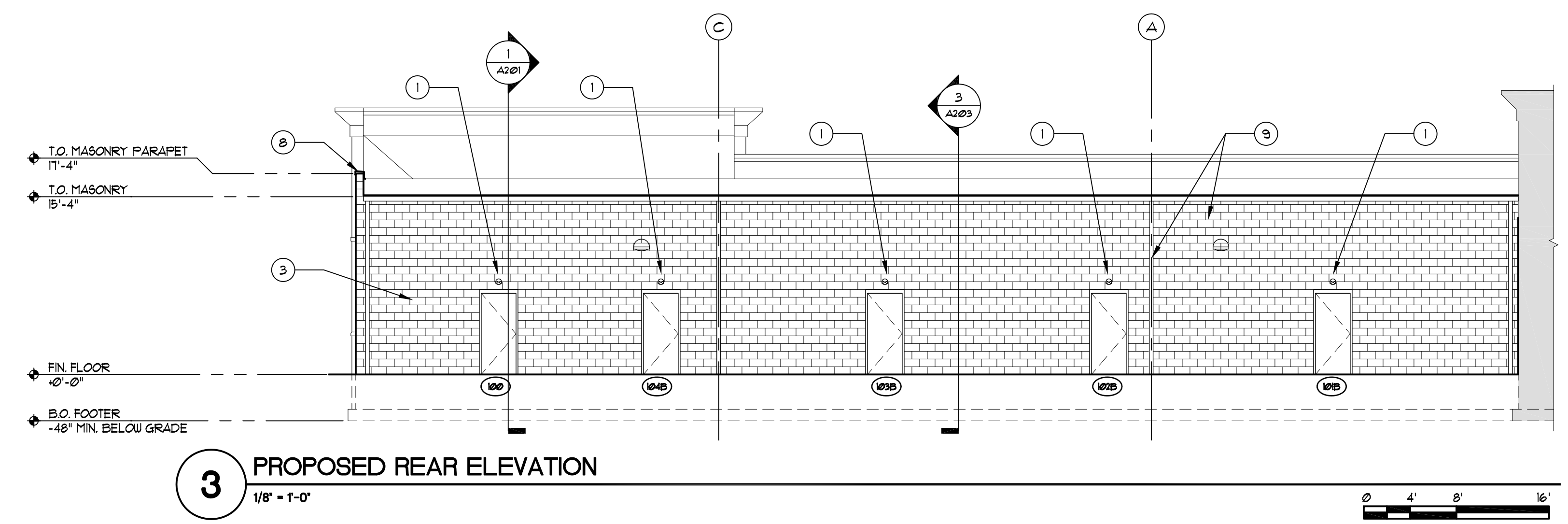
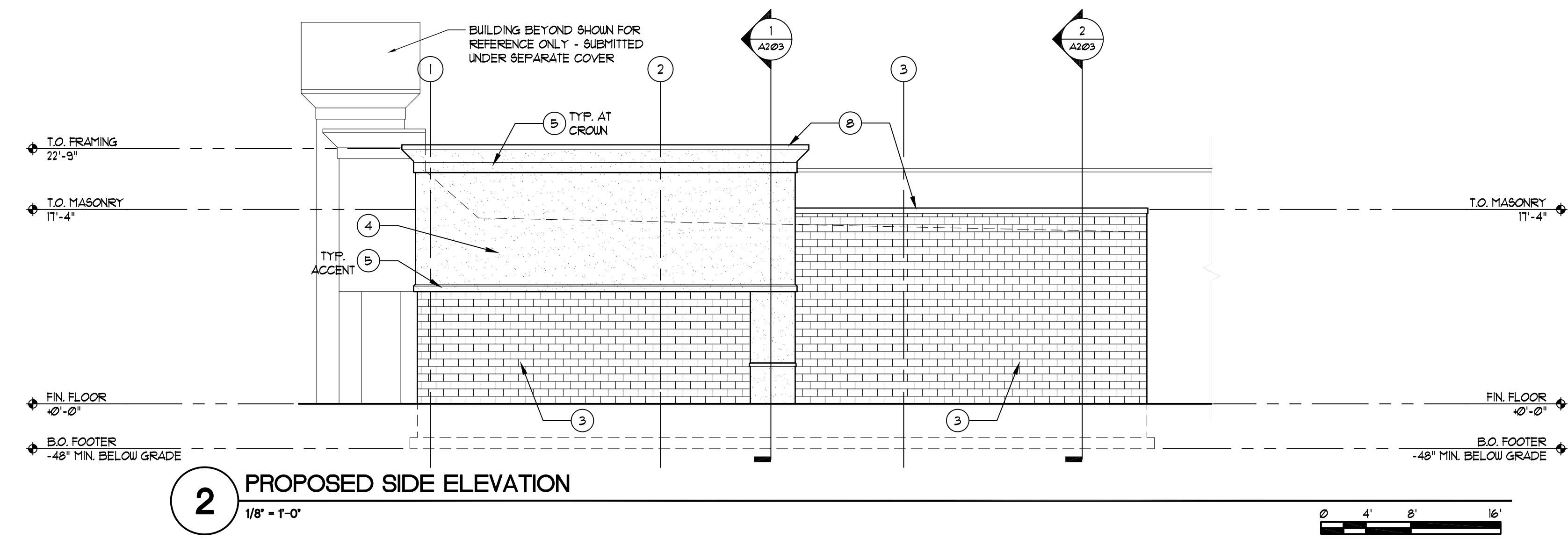


CONSTRUCTION KEYNOTES

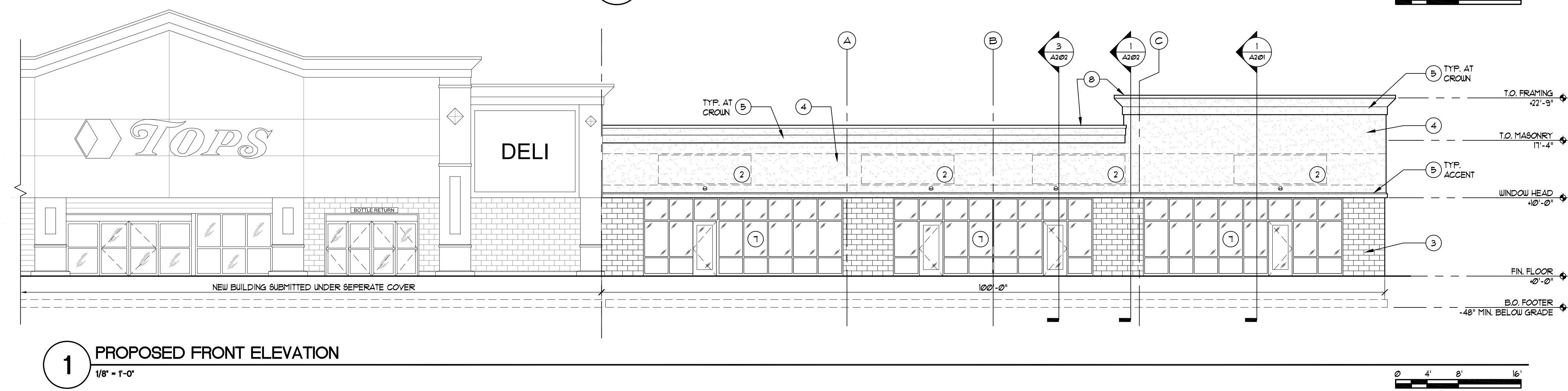
- 1 LIGHT FIXTURE (COORDINATE WITH ELECTRICAL DRAWINGS)
- 2 POTENTIAL SIGNAGE LOCATION: PROVIDE 3/8" FIRE TREATED PLYWOOD IN SHEATHING LIEU OF DENS GLASS SHEATHING (REF. WALL SECTIONS)
- 3 SPLIT FACE CMU
- 4 EIFS 'A'
- 5 EIFS 'B'
- 6 EIFS 'C'
- 7 ALUMINUM FRAMED STOREFRONT ENTRY UNIT
- 8 PREFINISHED ALUMINUM COPING WITH LOCK STRIP
- 9 6" ALUM. GUTTERS SLOPED 1/8" PER FOOT WITH 4" DOWNSPOUTS. CONNECT TO SITE STORM SYSTEM (COORDINATE WITH CIVIL DRAWINGS BY OTHERS AND PLUMBING DRAWINGS)



3 PROPOSED REAR ELEVATION
1/8" = 1'-0"



2 PROPOSED SIDE ELEVATION
1/8" = 1'-0"



1 PROPOSED FRONT ELEVATION
1/8" = 1'-0"

Architect: smith+associates
Consultant:

smith+associates
ARCHITECTS P.C.
263 CENTRAL AVENUE ROCHESTER, NY 14605
E-MAIL: MAIL@SMITHASSOCIATESARCH.COM
PHONE 585.232.5114 FAX 585.232.5177

EXTERIOR ELEVATIONS
TOPS PLAZA WALWORTH
WALWORTH PENFIELD ROAD
WALWORTH, NY

Date: 11-27-13		Project Manager: CB		Scale: AS NOTED	
Drawn By: JH		Checked By: JH		Revision Number	
Project #: 13065		Revision Description		Preliminary Not for Construction	
Sheet: A200		Project Name: 13065 - Tops Plaza Walworth		Sheet Title: Exterior Elevations and Sections	

Copyright © 2013 Smith + Associates Architects. All rights reserved. No portion of this drawing may be reproduced, stored, or transmitted by any means without prior written permission of the architect. Alterations to this document are illegal except when made in accordance with the New York State Education Law, Section 7209, Subdivision 2.