

PROFESSIONAL OFFICE SUITES FOR LEASE AT VICTORIA GARDENS

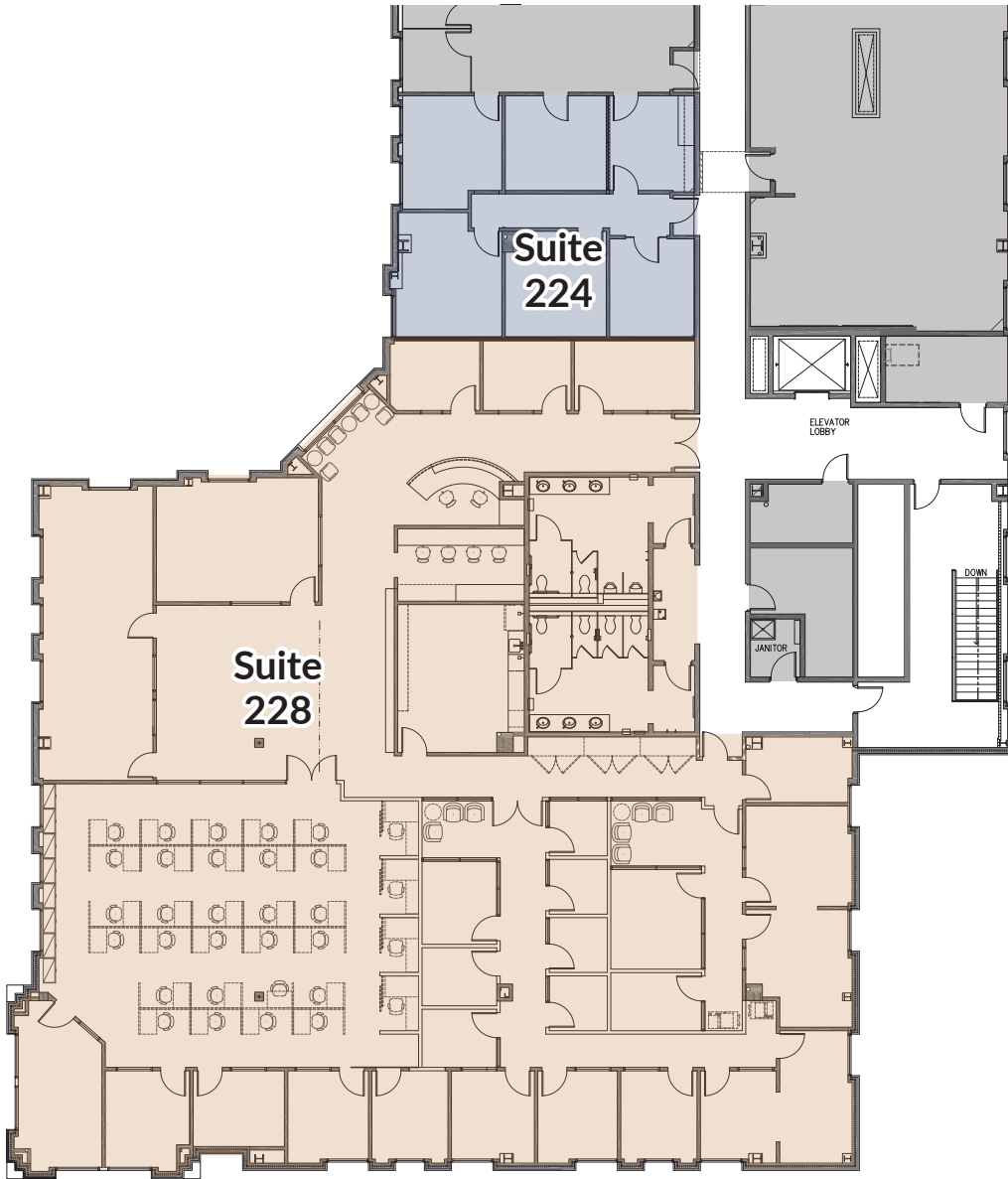
12487 & 12505 NORTH MAIN STREET
RANCHO CUCAMONGA, CA



LINDSAY MINGEE, PRESIDENT

714.317.3606 • DRE#: 01920658 • linds@elmcre.com





AVAILABILITIES			
12487 North Main Street			
Suite	Floor	Size	Rate
260*	2nd	±2,230 RSF	\$2.65 FSG
265*	2nd	±5,689 RSF	\$2.65 FSG
290	2nd	±3,414 RSF	\$2.65 FSG

**** Suite 260 and Suite 265 are contiguous for a total RSF of ±7,919**

12505 North Main Street			
Suite	Floor	Size	Rate
224*	2nd	±1,217 RSF	\$2.65 FSG
228*	2nd	±8,572 RSF	\$2.65 FSG

**** Suite 224 and Suite 228 are contiguous for a total RSF of ±9,789**

