

N-84°-03'-10"-E 100.00'

PIN SET

PIN SET

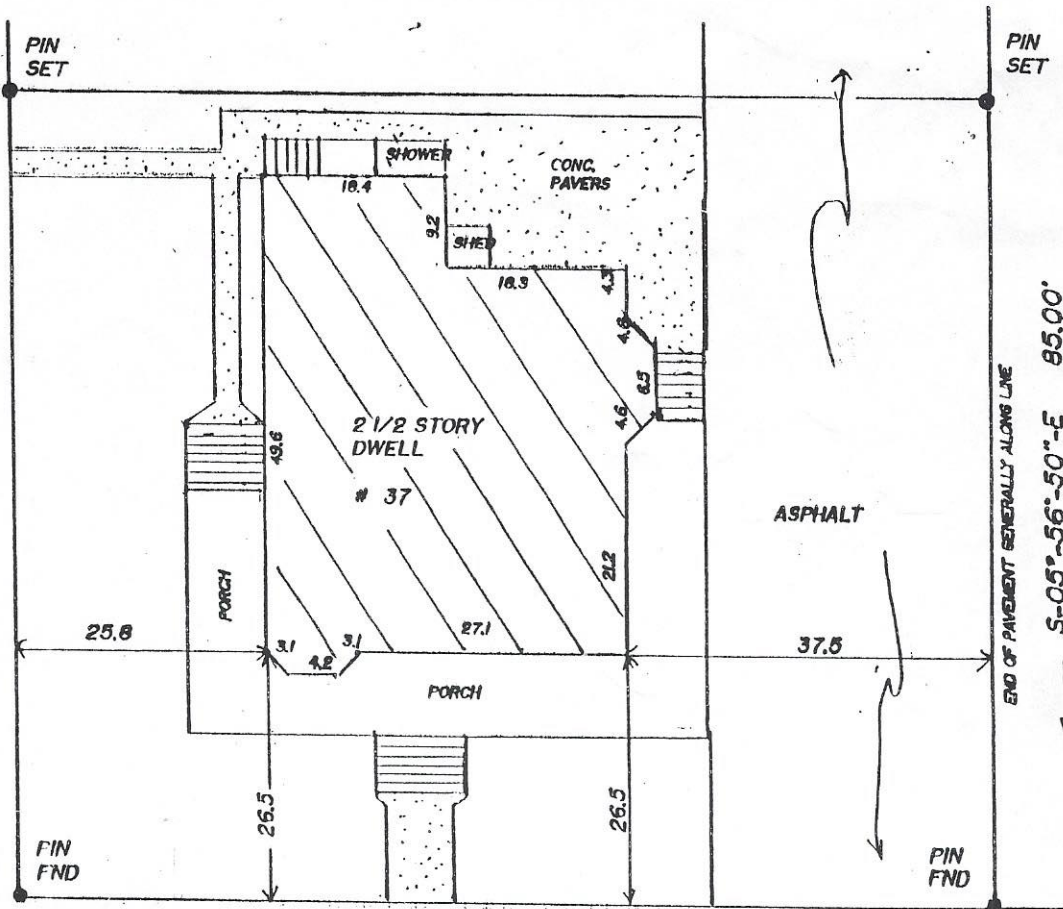
BOSTON AVENUE

N-05°-56'-50"-W 85.00'

P.O.B.

S-84°-03'-10"-W 100.00'

ARNOLD 70' R.O.W. AVENUE



END OF PAVEMENT GENERALLY ALONG LINE

S-05°-56'-50"-E 95.00'

FILED MAP

