



## Westward House, King Street West, Wigan, WN1 1LP

### Serviced office spaces TO LET

- Common Areas
- City/Town Centre
- Major Transport Links
- Bicycle Storage
- Business Lounge
- Wheelchair Accessible
- Meeting Rooms
- [///vine.vest.cheek](http://vine.vest.cheek)

## Summary

<b>Available Size</b>	86 to 108 sq ft
<b>Rent</b>	£27.21 per sq ft
<b>Business Rates</b>	Upon Enquiry
<b>EPC Rating</b>	D

## Description

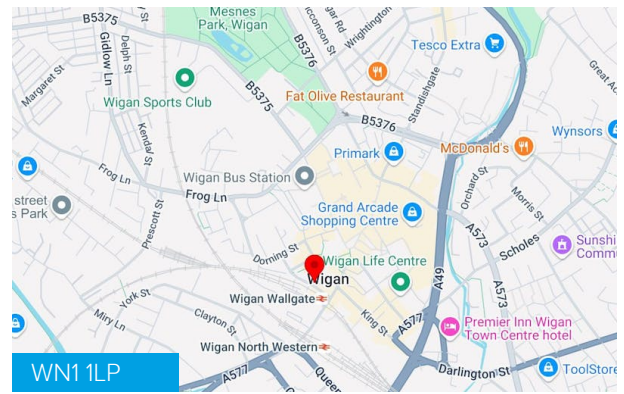
Be perfectly positioned for new opportunities with office space at West Ward House, in the heart of Wigan. Choose how you work best, from collaborative coworking spaces to private office spaces. Host clients in modern meeting rooms, fully equipped with the latest business technology.

## Location

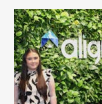
Westward House is in the town centre of Wigan, just 21.5 miles from Manchester City Centre. Transport links are excellent Wigan Wallgate Rail Station bus stop (Stop E) located to the front of the building. Access to Wigan Wallgate Train Station is 400ft away, providing access in and around the city of Manchester with bars and restaurants within walking distance.

The A49 can be accessed from the East of the site which connects to the M6 North and South. The M62 can be accessed from the M6, providing access to the A1(M) North and South, offering wider linkages to large cities such as Leeds, Edinburgh and London.

Manchester Airport is 27.4 miles South East of the site.



## Viewing & Further Information



**Caitlin Parker**

01609 797 330

caitlin.parker@alignpropertypartners.co.uk

**View Properties Here**  
[www.alignpropertypartners.co.uk](http://www.alignpropertypartners.co.uk)

