

2 KEYED NOTE PLAN - MEZZANINE LEVEL

SCALE: 1/4"=1'-0"

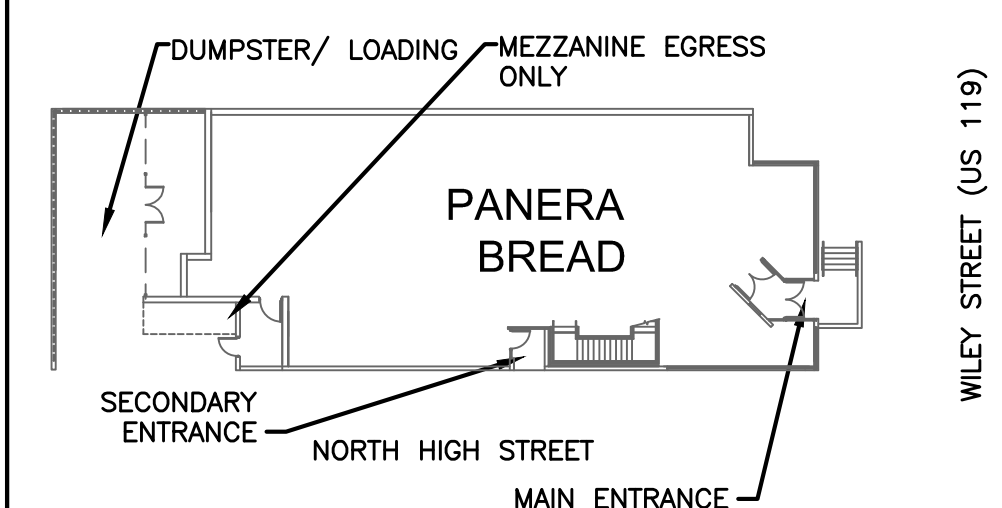
GENERAL NOTES:

- A. PROVIDE 1" AIR SPACE AT SIDE(S) OF OVEN/PROOFER & COOLER/FREEZER (MIN. 3" AT BACK OF OVEN). VERIFY ALL DIMENSIONS & SPECS W/ EQUIPMENT MANUAL. NO FINISH ON WALLS BEHIND OVEN/PROOFER AND COOLER/FREEZER (TAPE & PRIME ONLY).
- B. OFFICE AREA TO INCLUDE THE FOLLOWING (SUPPLIED & INSTALLED BY GC): ROUGH-INS FOR PHONE, ALARM, SOUND, & MICROS SYSTEMS. SEE ELECTRICAL SHEETS; 2'-0" CUSTOM LENGTH PLASTIC LAMINATE WHITE DESK TOP CLEATED TO WALL, W/ (2) 2" DIA. GROMMETS; (3) 16" DEEP PLASTIC LAMINATE WHITE SHELVES MOUNTED ON HEAVY-DUTY KV STANDARDS WITH ADJUSTABLE BRACKETS.
- C. G.C. TO PROVIDE BLOCKING FOR SUPPORT OF RESTROOM ACCESSORIES AS RECOMMENDED BY MANUFACTURER. SEE INTERIOR ELEVATIONS.
- D. PROVIDE 5/8" CEMENT BACKING BOARD ON ALL KITCHEN & RESTROOM AND OFFICE WALLS FROM FLOOR TO 2'-0" A.F.F.
- E. PROVIDE 5/8" FIRE-TREATED PLYWOOD BACKING BOARD ON ALL KITCHEN (BACK OF HOUSE) & OFFICE WALLS (2'-0" AFF TO CEILING).
- F. OCCUPANCY LOAD SIGN SUPPLIED & INSTALLED BY G.C.
- G. G.C. SHALL SUPPLY & INSTALL RECESSED FIRE EXTINGUISHERS AS REQUIRED BY LOCAL CODES. LOCATION PER LOCAL CODES.
- H. NOT USED
- J. ALL DIMENSIONS NOTED ARE FROM FACE OF FRAMING TO FACE OF FRAMING.
- K. BOOTH/BANQUETTE SEATING SUPPLIED BY FURNITURE SUPPLIER, INSTALLED BY G.C. BASES TO COVER FLOOR TRANSITIONS. SEE EQUIPMENT PLAN FOR FABRICS AND SIZES. GC TO APPLY CPT BASE TO ALL TOE KICKS UPON INSTALLATION.
- L. ELECTRICAL EQUIPMENT BY GC. SEE ELECTRICAL DRAWINGS.
- M. PLUMBING EQUIPMENT BY GC. SEE PLUMBING DRAWINGS.
- N. NOT USED
- P. PROVIDE LAP JOINTS WITH FACTORY FINISHED EDGE AT CAFE LIMESTONE WALL.

KEYED NOTES:

INDICATED BY SYMBOL

- 1.1 (NOT USED)
- 1.2 UNFINISHED DRYWALL. SEE A-2.3 FOR FINISHES. (NOT USED THIS LEVEL)
- 1.3 SOLID SURFACE SILL PROVIDED BY CASEWORK SUPPLIER, INSTALLED BY GC. DIMENSIONS TO BE FIELD VERIFIED. (NOT USED THIS LEVEL)
- 1.4 ROLLER SHADES TO BE INSTALLED - FULL WIDTH OF WINDOW OPENINGS FROM CEILING TO CLOSEST HORIZONTAL MULLION OR 30" AFF (TABLE HEIGHT). SEE FINISH NOTES FOR SPECIFICATION.
- 1.5 SPARKS MODERN, 1-SIDED GAS FIREPLACE SEE DETAIL 9/A-4.5.
- 1.6 G.C. TO LEAVE A COPY OF AS-BUILT DRAWINGS FOR FUTURE REFERENCE IN A 6" PVC PIPE ATTACHED TO A FIRE SPRINKLER LINE OR OTHER VERTICAL PIPE. (NOT USED THIS LEVEL)
- 1.7 RECESSED PHONE BOX PROVIDED BY CASEWORK CO, INSTALLED BY GC. SEE DETAIL 8/A-4.6. - VERIFY LOCATION WITH OWNER'S REPRESENTATIVE. (NOT USED THIS LEVEL)
- 1.8 G.C. SHALL PROVIDE & INSTALL MT-200-X MATTE WHITE MADICO WINDOW FILM (INSIDE) AS INDICATED. (NOT USED)
- 5.1 GC TO PROVIDE FRAME W/ INSULATED GLASS STOREFRONT (CLEAR GLASS). SEE ELEVATIONS AND WINDOW SCHEDULE.
- 5.2 GC TO PROVIDE CLEAR ANOD. ALUM FRAME W/ 1/4" TEMPERED STOREFRONT (CLEAR GLASS). SEE A-4.9 FOR TEMPERED GLASS LOCATIONS OR AS REQUIRED BY CODE. (NOT USED THIS LEVEL)
- 5.3 GC. SHALL PROVIDE 42" SERVICE DOOR. (SEE STRUCT DWGS FOR LINTEL SCHEDULE)
- 5.4 WALLS/EQUIPMENT/PROTECTION:
- 5.5 1" CLEAR ACRYLIC CORNER GUARD FROM BASE TO 8'-0" A.F.F. (SUPPLIED & INSTALLED BY G.C.) PROVIDE ON ALL OUTSIDE CORNERS IN PUBLIC AREAS OF THE CAFE. CORNER GUARDS ARE TO BE MECHANICALLY FASTENED W/ SATIN ALUM BRADS AS REQUIRED.
- 5.6 STAINLESS STEEL CORNER GUARD (16 GA - 1 1/2" RETURNS). INSTALL OVER TILE FROM FLOOR TO 8'-0" A.F.F. B.O.H. 7'-0" F.O.H. OR UNDERSIDE OF BULKHEAD/ ARCH. (SUPPLIED & INSTALLED BY G.C.) STOP QUARRY TILE BASE @ BACK EDGE OF CORNER GUARD W/ BULL NOSE EDGE (NOT USED THIS LEVEL)
- 5.7 STAINLESS STEEL END CAP (16 GA - 1 1/2" RETURNS). INSTALL OVER TILE FROM FLOOR TO 8'-0" A.F.F. B.O.H. 7'-0" F.O.H. OR UNDERSIDE OF BULKHEAD/ ARCH. (SUPPLIED & INSTALLED BY G.C.) STOP QUARRY TILE BASE @ BACK EDGE OF CORNER GUARD W/ BULL NOSE EDGE (NOT USED THIS LEVEL)
- 5.8 STAINLESS STEEL CLOSURE PLATE (16GA) FROM FLOOR TO CEILING OR BOTTOM OF BULKHEAD. (NOT USED THIS LEVEL)
- 5.9 INSTALL FACTORY FINISH TILE EDGE W/ CLEAN GROUT JOINT. STAGGER TILE IF WRAPS CORNER. SEE SHEET A-2.3 FOR TILE FINISH.
- 6.1 (NOT USED)
- 6.2 1 1/2" DIA. PIPERAIL TO PROTECT EQUIPMENT/PLUMBING FIXTURE. TOP AT 2'-2'-0" A.F.F. SECURE BASE PLATE TO FLOOR WITH 3/8" DIA. EXPANSION ANCHORS. SEE DETAIL SHEET. (NOT USED)
- 6.3 1" BOSTON-BUMPER GUARDS INSTALLED @ 30" & 60" AT ALL EXPOSED WALLS IN BACK OF HOUSE, SEE INTERIOR ELEV. REFER TO MATERIAL & FINISH LEGEND FOR SPEC. (NOT USED THIS LEVEL)
- 6.4 BLACK BOSTON-BUMPER PROTECTION @ CASEWORK, 12" & 30" AFF (NOT USED THIS LEVEL)
- 6.5 B1 BOSTON BUMPER GUARDS @ 18" AND 36" AFF. (NOT USED)
- 6.6 WD855 SHALL BE SUPPLIED OWNER & INSTALLED BY THE GC. REFER TO THE EQUIPMENT SCHEDULE ON SHEET ED-4.1 FOR ADDITIONAL INFORMATION. MOUNT 3'-6" A.F.F. TO B.O. CABINET. (NOT USED THIS LEVEL)
- 6.7 4" EMT SODA CONDUIT LINE BY GC BELOW SLAB, FROM BAG-N-BOX TO SODA MACHINE WITH SWEEPS. SEE EQUIPMENT AND PLUMBING DWGS.
- 6.8 CPI PANEL, HEAD/BASE DETAIL INDICATED ON DETAIL SHEETS. (NOT USED THIS LEVEL)
- 6.9 PRIOR TO TURNOVER, PLUMBING & ELECTRICAL CONTRACTORS WILL CONTACT NAVIEN TECHNICAL SUPPORT (1-800-519-8794, OPTION 2) FOR FINAL PROGRAMMING OF UNITS. (NOT USED THIS LEVEL)



1 KEYPLAN
SCALE: NTS

REVISION

ISSUE DATE: 03-26-13
PROJECT NUMBER: 11-0501
DRAWN BY: GMS
DM: DC
CPM: KK

SHEET NO:
A-2.1.B
FLOOR PLAN
DIMENSIONS, KEYNOTES
FILE: 4345-A-2.1.dwg

BAKERY CAFE #4345
FREESTANDING BUILDING
INTERSECTION OF HIGH STREET & WILLEY STREET
MORGANTOWN, WV 26505
MONONGALIA COUNTY



WILEY STREET (US 119)