

BLOM COMMERCIAL SUBDIVISION

UNIT No. 11

3500
30

A RESUBDIVISION OF THE EASTERN AND NORTHERN PORTION OF LOT 6 AND THE UNPLATTED PORTION BOTH IN BLOM COMMERCIAL SUBDIVISION UNIT 3, AND LOT 2 IN THE BLOM COMMERCIAL SUBDIVISION UNIT 2, ALL LOCATED IN THE WEST HALF OF THE SOUTHWEST QUARTER OF SECTION 2, TOWNSHIP 16 NORTH, RANGE 14 WEST, CADDO PARISH, LOUISIANA.

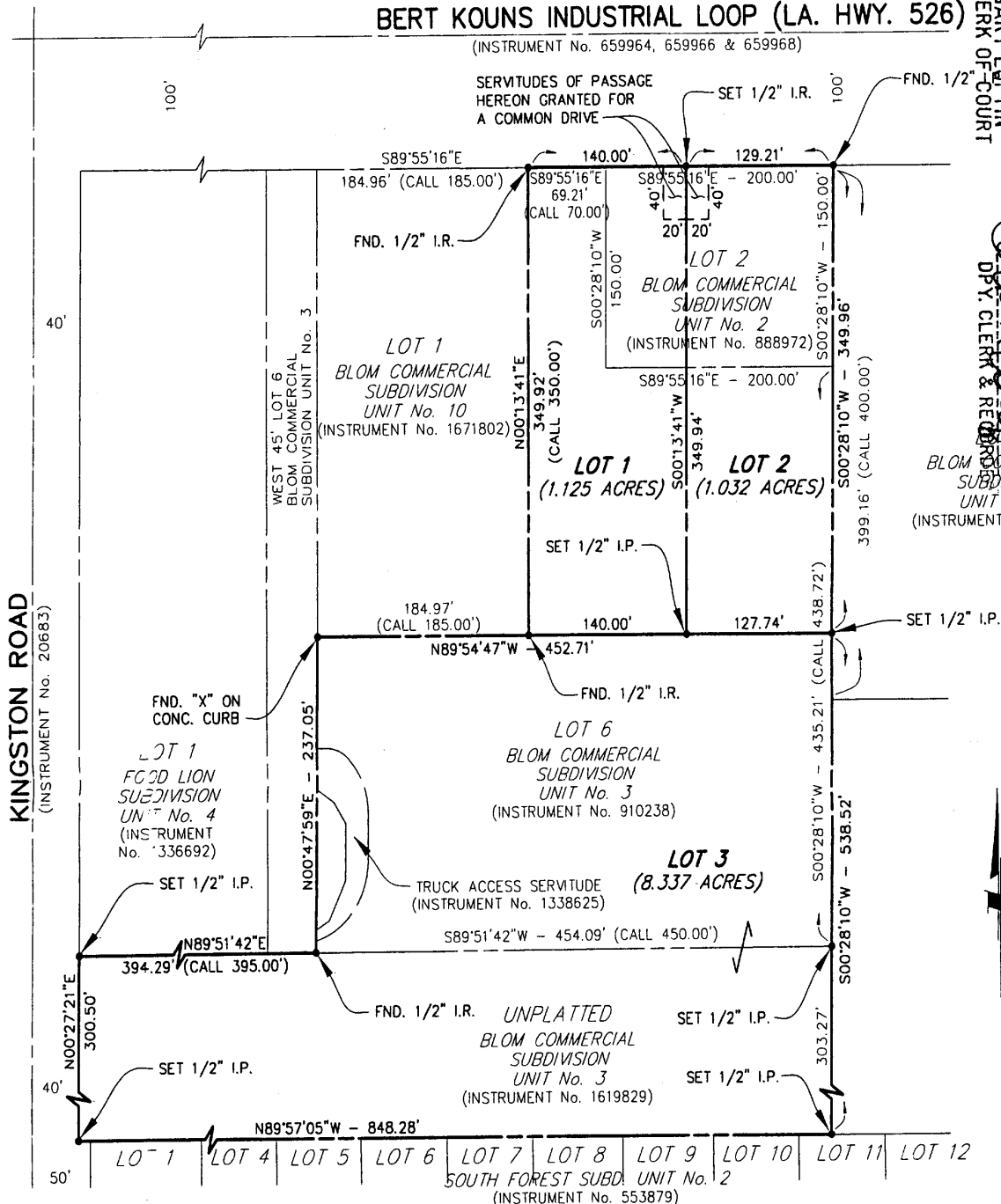
FEBRUARY 27, 2001

APPROVED:

Charles R. Holland
METROPOLITAN PLANNING COMMISSION

[Signature]
CITY ENGINEER, CITY OF SHREVEPORT, LA.

SCALE: 1" = 100'



1740709
GARY LOFTIN
CLERK OF COURT

FILED & RECORDED
CADDO PARISH
SHREVEPORT, LA.
2001 MAR 13 PM 4:15
BLOM COMMERCIAL
SUBDIVISION
UNIT No. 3
(INSTRUMENT No. 910238)

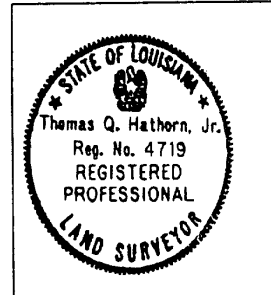
NOTES:

- THIS PROPERTY IS WITHIN THE INCORPORATED CITY LIMITS OF SHREVEPORT, LOUISIANA.
- THE FOLLOWING IS A LIST OF INSTRUMENT NUMBERS FROM THE RECORDS OF CADDO PARISH, LOUISIANA THAT DIRECTLY BEAR UPON SAID PROPERTY DESCRIBED ABOVE:

INSTRUMENT No.	DESCRIPTION
888972	BLOM COMMERCIAL SUBDIVISION UNIT No. 2
910238	BLOM COMMERCIAL SUBDIVISION UNIT No. 3
1671802	BLOM COMMERCIAL SUBDIVISION UNIT No. 10
1336692	FOOD LION SUBDIVISION UNIT # 4
553879	SOUTH FOREST SUBDIVISION UNIT # 2
*41563	BLOM TO INVINCIBLE OIL
20683	BLOM TO PUBLIC (KINGSTON ROAD)
*586810	BLOM TO STATE OF LA. MINERAL RESERVATION
659964	BLOM ETAL AND STATE OF LA. ACT OF CORRECTION LA. HWY. 526
659966	BLOM ETAL AND STATE OF LA. ACT OF CORRECTION LA. HWY 526
659968	BLOM ETAL AND STATE OF LA. ACT OF CORRECTION LA. HWY. 526, DEDICATION MAP, FLOURNOY-LUCAS ROAD 8-7-1964
*358282	DEDICATION MAP TO PUBLIC, FLOURNOY-LUCAS RD.
*1323481	BLOM TO CITY OF SHREVEPORT - 16" WATER MAIN
*1338623	COMMERCIAL NATIONAL BANK AND FOOD LION, INC.
*1338624	RECIPROCAL SERVITUDES AND AGREEMENT FOR COMMON FOOTINGS
1338625	COMMERCIAL NATIONAL BANK AND FOOD LION, INC. SERVITUDE AGREEMENT
*1651976	FIRST AMERICAN BANK OPERATING AS DEPOSIT GUARANTY BANK AND SHREVEPORT HOLDING, LTD. TERMINATION OF SERVITUDES
*1652266	FIRST AMERICAN BANK OPERATING AS DEPOSIT GUARANTY BANK AND SHREVEPORT HOLDING, LTD. TERMINATION OF PROTECTIVE COVENANTS
- THE SERVITUDES AND RESTRICTIONS SHOWN ON THIS SURVEY ARE LIMITED TO THOSE SET FORTH IN THE DESCRIPTIONS AND PLATS FURNISHED TO US AND THERE IS NO REPRESENTATION THAT ALL APPLICABLE SERVITUDES AND RESTRICTIONS ARE SHOWN HEREON. THE SURVEYOR HAS MADE NO TITLE SEARCH OF THE PUBLIC RECORD IN COMPILING THE DATA FOR THIS SURVEY.
- THE SURVEY WAS MADE IN ACCORDANCE WITH THE MINIMUM REQUIREMENTS FOR LAND SURVEYS IN THE STATE OF LOUISIANA AND MEETS ALL THE REQUIREMENTS WITH REGARDS TO MINIMUM ANGLE, DISTANCE AND CLOSURE FOR A CLASS "B" SURVEY.
- AS SHOWN ON FLOOD INSURANCE RATE MAP, COMMUNITY PANEL NUMBER 22017C0469F DATED APRIL 6, 2000, LOTS 1 AND 2 OF BLOM COMMERCIAL SUBDIVISION UNIT NUMBER 11 SHOWN HEREON ARE IN FLOOD ZONE AE.
- THE BASE MAP AND BEARINGS USED IN THIS SURVEY ARE TAKEN OFF THE RECORD BEARING OF THE AVERAGE OF POINTS FOUND ALONG BERT KOUNS INDUSTRIAL LOOP FOR BLOM COMMERCIAL SUBDIVISION UNITS 2, 3 AND 10.
- THIS PLAT DOES NOT CONSTITUTE THE FOLLOWING:
 - WET LANDS DETERMINATION
 - SUBSURFACE DETERMINATIONS
 - ENVIRONMENTAL ASSESSMENTS
- I HEREBY CERTIFY THAT THIS PLAT CONFORMS TO ORDINANCE No. 115 OF 1970 ADOPTED BY THE CITY OF SHREVEPORT, LOUISIANA AND ANY OTHER AMENDMENTS THERETO.
- THIS MAP IS CERTIFIED TO BE CORRECT AND IN ACCORDANCE WITH A PHYSICAL SURVEY MADE ON THE GROUND UNDER THE DIRECT SUPERVISION AND CONTROL OF THE UNDERSIGNED.

OWNERSHIP:
THE UNDERSIGNED OWNER HEREBY AUTHORIZES THE PLATTING AND FILING OF THIS RESUBDIVISION.

Mark P. Sealy
SEALY ASHLEY RIDGE, L.L.C.
A LOUISIANA LIMITED LIABILITY COMPANY
REPRESENTED BY IT'S MANAGER:
MARKSKO, L.L.C.
A LOUISIANA LIMITED LIABILITY COMPANY
MARK P. SEALY, MANAGER



Thomas Q. Hathorn, Jr.
THOMAS Q. HATHORN, JR.
P.L.S. No. 4719
HATHORN SURVEYING
9006 DOGWOOD TR.
HAUGHTON, LA. 71037
(318) 949-6359