



**FOR LEASE**

# OFFICE SPACE

## Property Highlights

- 897 ± SF available
- \$21.00/SF MG
- Amenities include an on-site fitness center, mother's room, and bike storage
- Steps away from Osage Park's trails, food trucks, pickleball courts, dog parks, and more
- Less than 1.5 miles from the New Walmart Home Office and Sam's Club HQ
- Parking Ratio 4/1000

\*information deemed reliable but not guaranteed

**For more information, please contact:**

**Stephanie Farmer**

+1 479 845 3022

[sfarmer@sagepartners.com](mailto:sfarmer@sagepartners.com)

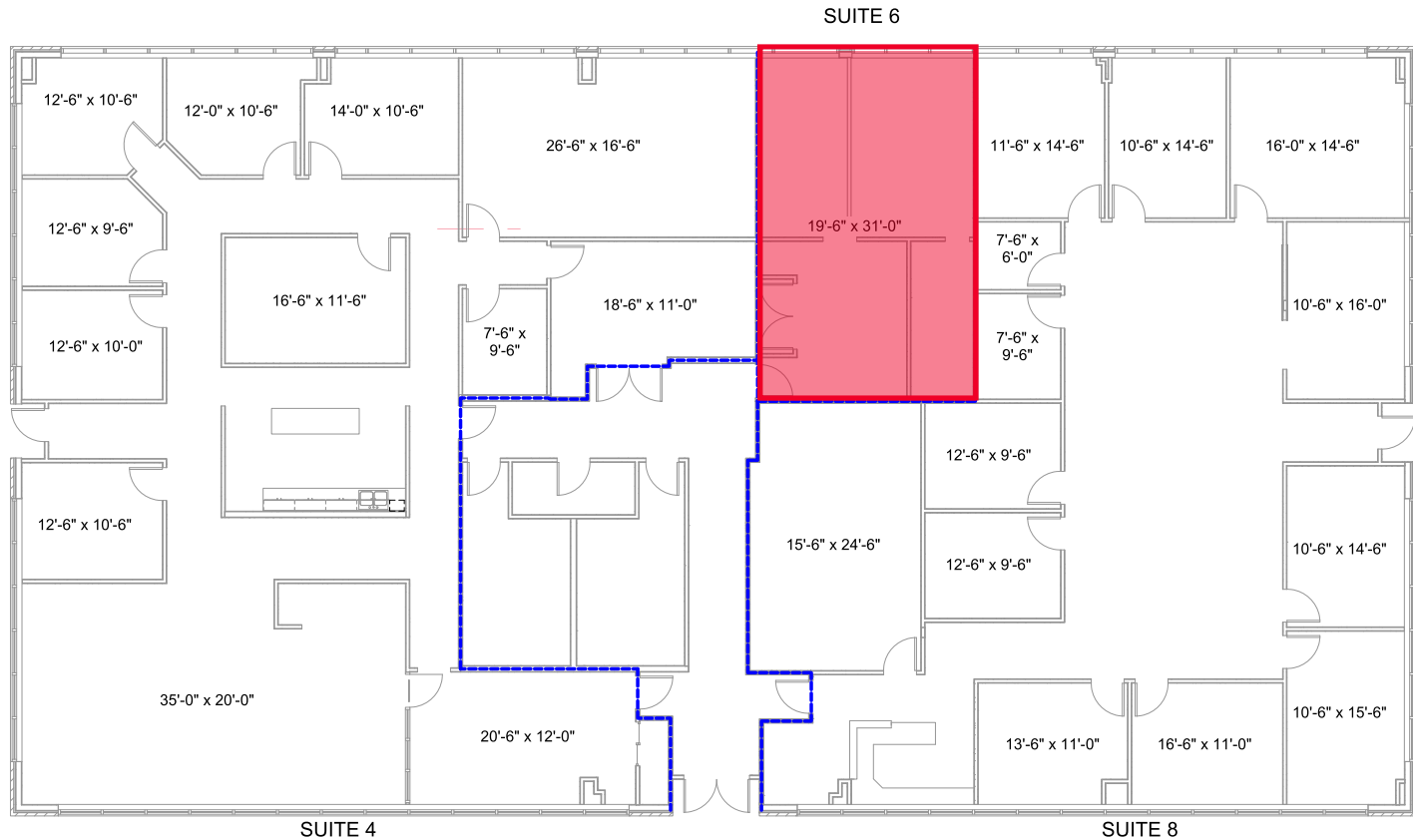
**Olivia Funderburk**

+1 417 818 6875

[ofunderburk@sagepartners.com](mailto:ofunderburk@sagepartners.com)

**479 845 3000**

**[sagepartners.com](http://sagepartners.com)**



1 1714 SW. COMMERCE DR - FLOOR PLAN  
N.T.S.

	USEABLE	RENTABLE	RENTABLE AREA	8,761 SF
SUITE 1	3,807 SF	4,227 SF	USEABLE AREA	7,892 SF
SUITE 2	634 SF	704 SF	FLOOR RAU RATIO	1.1101
SUITE 3	3,451 SF	3,853 SF	BUILDING GROSS AREA	9,003 SF
COMMON AREA	869 SF			



FOR REFERENCE  
AND REVIEW ONLY  
NOT FOR  
CONSTRUCTION

2/15/2021 4:29:07 PM

10/12/2020  
PERTAINING TO ISSUES OF  
CONFIDENTIALITY AND  
COPYRIGHT, REQUEST FOR  
REVISIONS OF THESE  
DRAWINGS MUST BE  
APPROVED BY NIELSEN  
ARCHITECTURE, LLC

**1714 COMMERCE DR**  
1714 SW COMMERCE DRIVE

PROJECT NUMBER:  
2020-0027  
DRAWN BY: JPM  
APPROVED BY: EJM  
ISSUE DATE:

10/12/2020

REVISIONS	DATE	DESCRIPTION

SHEET CONTENTS:

1714 COMMERCE DR  
FLOOR PLAN

