

19234 W. SEVEN MILE ROAD
DETROIT, MICHIGAN



**SIGNATURE
ASSOCIATES**
KNOW SIGNATURE | KNOW RESULTS

RETAIL FOR SALE OR LEASE
2,200 Square Feet Available



PROPERTY FEATURES

- 2,220 square feet available
- 10' clear height
- Used car dealership with license
- 40 car lot
- Main Road frontage
- Paved fenced parking
- Lease Rate: \$3,000/month Gross
- Sale Price: \$399,000 (\$181.36/sq. ft.)



For more information, please contact:

JOE STACK
(248) 359 0615
jstack@signatureassociates.com

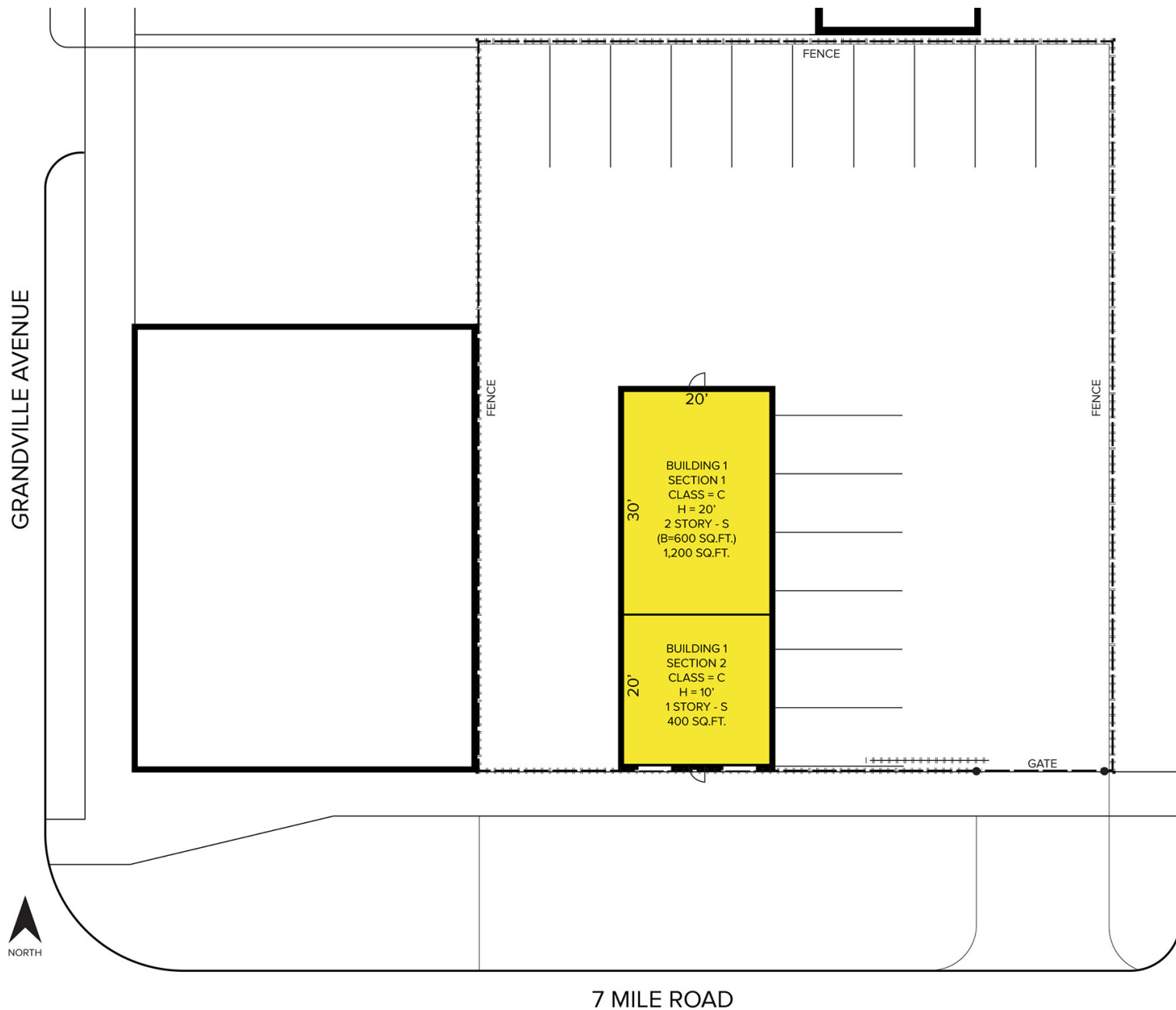
SIGNATURE ASSOCIATES
One Towne Square, Suite 1200
Southfield, MI 48076
www.signatureassociates.com

19234 W. Seven Mile Road – Detroit, Michigan

Retail For Sale or Lease

2,200
Square Feet
AVAILABLE

Site Plan



For more information, please contact:

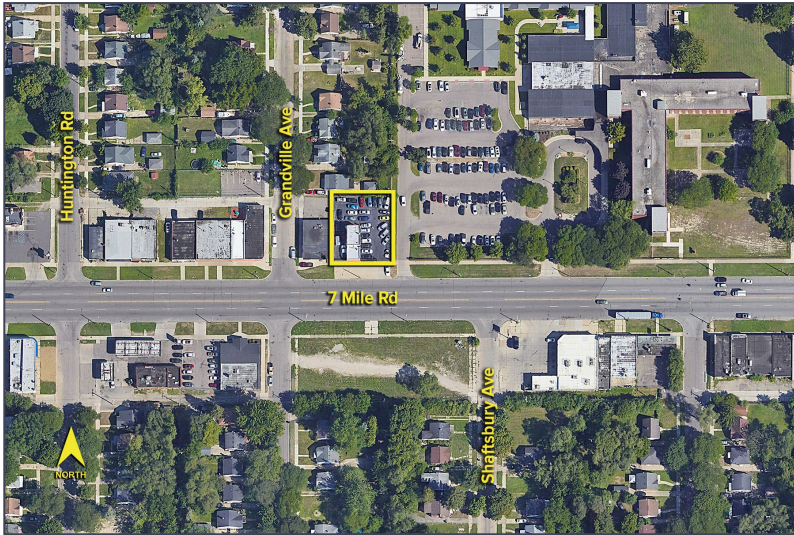
JOE STACK
(248) 359 0615
jstack@signatureassociates.com

SIGNATURE ASSOCIATES
One Towne Square, Suite 1200
Southfield, MI 48076
www.signatureassociates.com

19234 W. Seven Mile Road – Detroit, Michigan

Retail For Sale or Lease

2,200
Square Feet
AVAILABLE



DEMOGRAPHICS

	POPULATION	MED. HH INCOME
1 MILE	19,626	\$49,105
3 MILE	140,834	\$50,472
5 MILE	358,886	\$58,721

TRAFFIC COUNTS (TWO-WAY)

14,407	7 Mile Rd. W of Southfield Fwy.
14,716	7 Mile Rd. E of Southfield Fwy.
134,242	Southfield Fwy. N of 7 Mile Rd.
132,878	Southfield Fwy. S of 7 Mile Rd.



For more information, please contact:

JOE STACK
(248) 359 0615
jstack@signatureassociates.com

SIGNATURE ASSOCIATES
One Towne Square, Suite 1200
Southfield, MI 48076
www.signatureassociates.com