



## 1615 21st Ct

Phenix City, Alabama 36867

### Property Highlights

- - +/- 2,400 SF building suitable for office or medical use
- - Exam rooms, lab room, private office with bathroom, reception & lobby
- - Parking for staff and visitors
- - Convenient access for clients and patients
- - Proximity to local amenities and services

### Property Overview

+/- 2,400 SF building listed at \$285,000 for sale in Phenix City, Alabama. Close to US-80 & US HWY 280 for traveling convenience. Formerly used as a medical office / family physician office, this space offers two reception windows, a waiting room / lobby area, public bathrooms, a private bathroom for employees, staff lounge, private bathroom attached to the doctor office, exam rooms, lab room, and storage shelving.

### Offering Summary

<b>Sale Price:</b>	\$285,000
<b>Building Size:</b>	+/- 2,400 SF
<b>Available SF:</b>	+/- 2,400 SF
<b>Lot Size:</b>	0.19 Acres

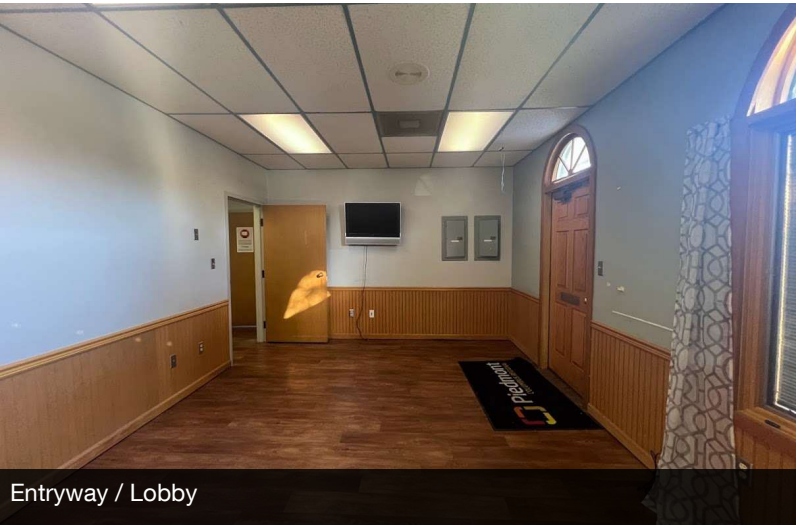
### For More Information

#### Jack Hayes, SIOR, CCIM, MICP

O: 706 660 5418 x1002  
jhayes@g2cre.com | AL #000094654

#### David C. Johnson

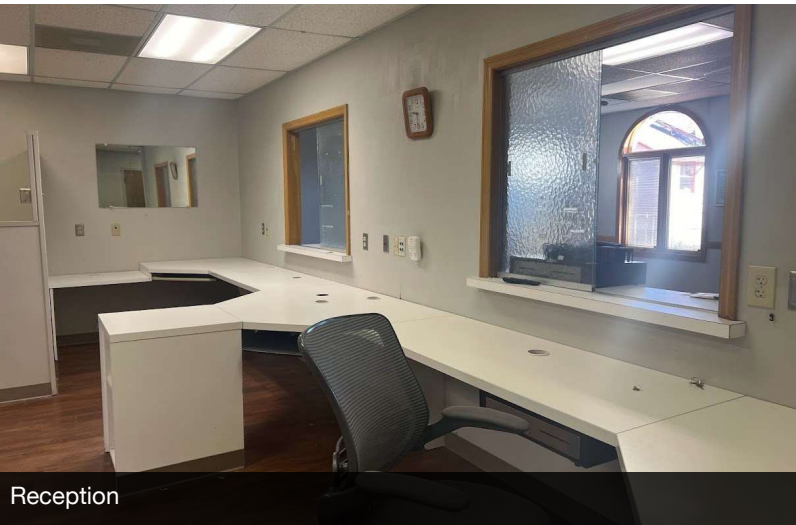
O: 706 660 5418 x1008  
djohnson@g2cre.com | AL #000063228



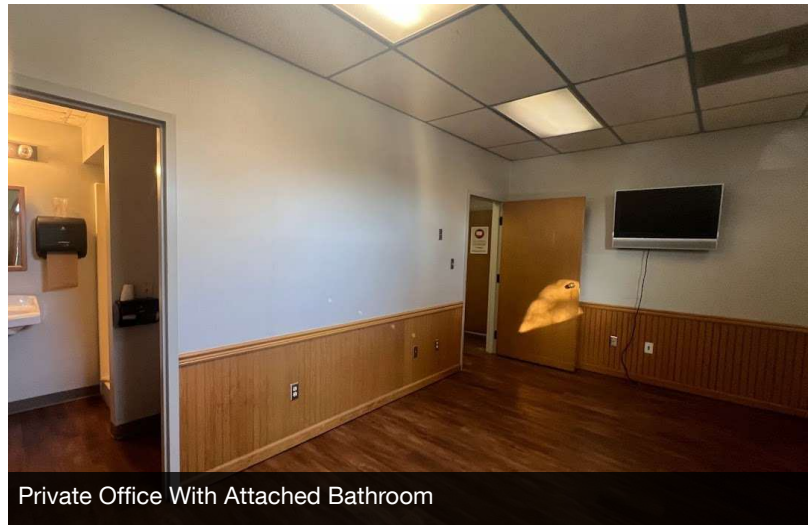
Entryway / Lobby



Reception



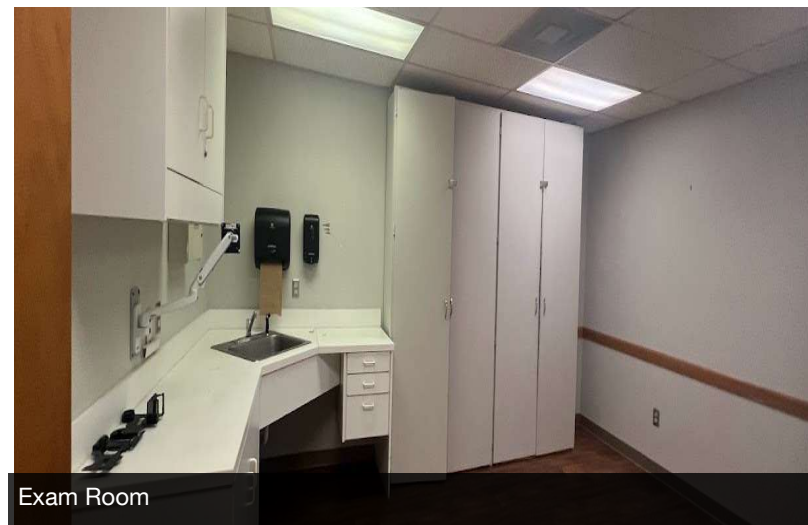
Reception



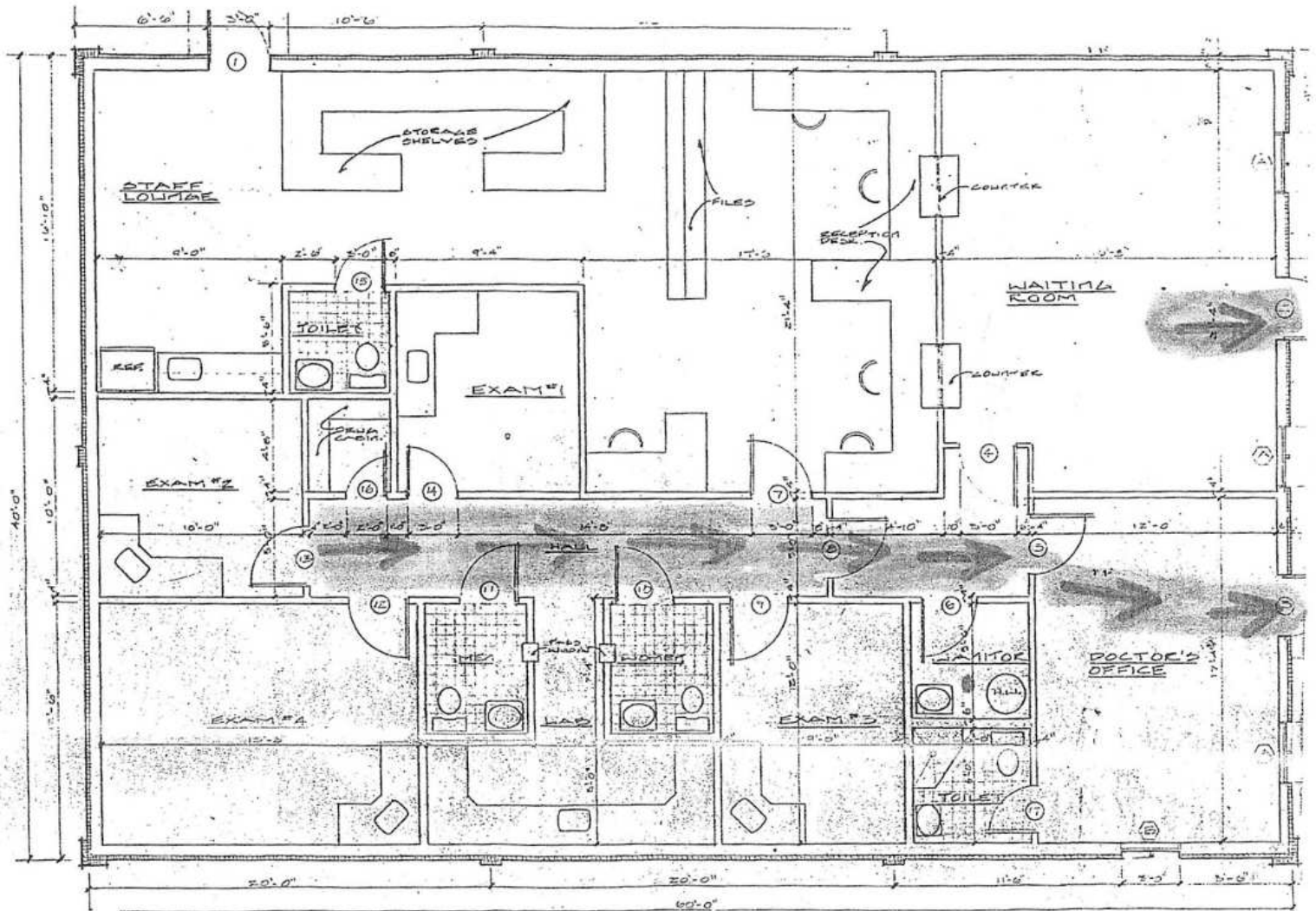
Private Office With Attached Bathroom

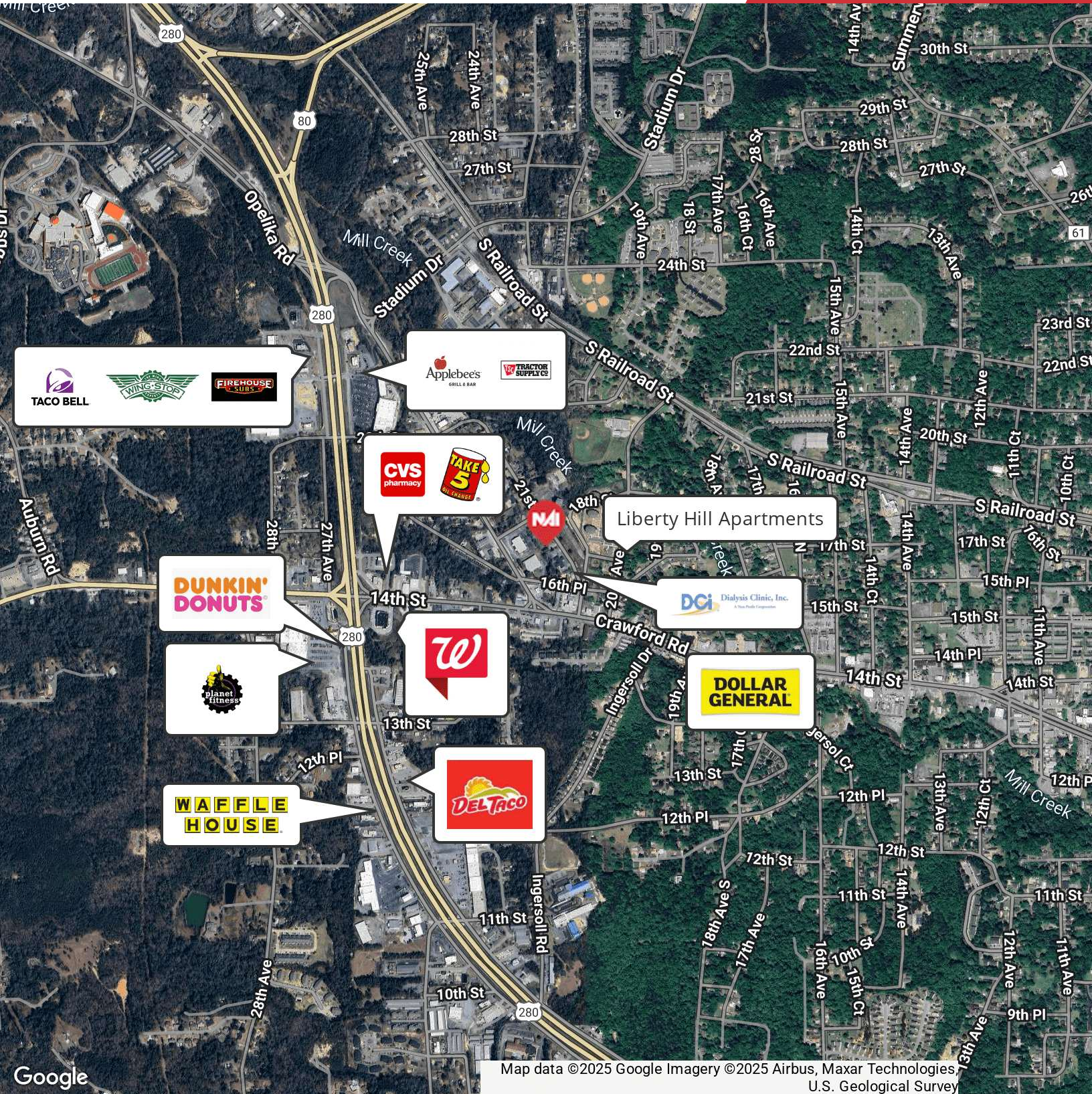


Exam Room



Exam Room



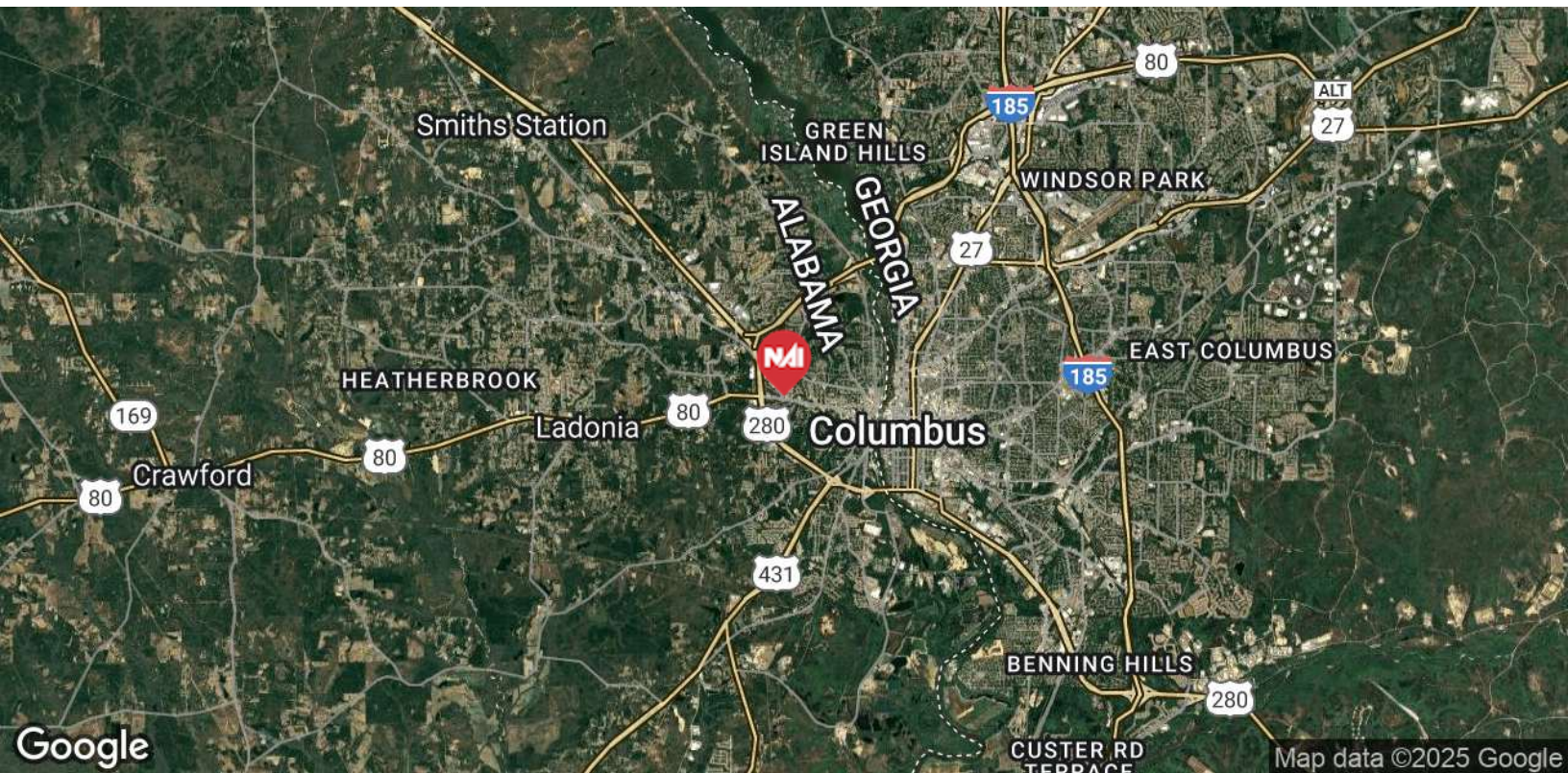
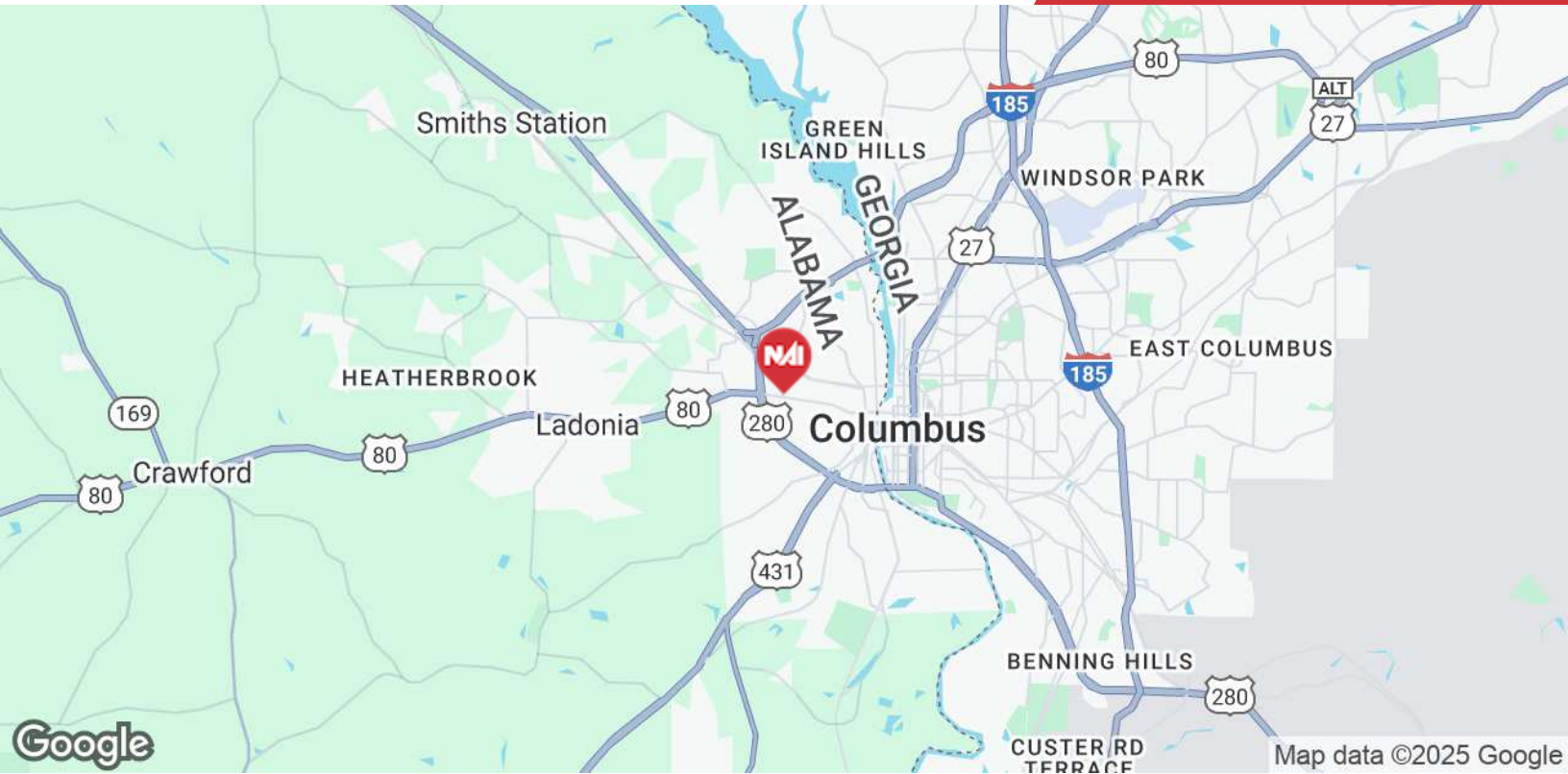


Google

Map data ©2025 Google Imagery ©2025 Airbus, Maxar Technologies, U.S. Geological Survey

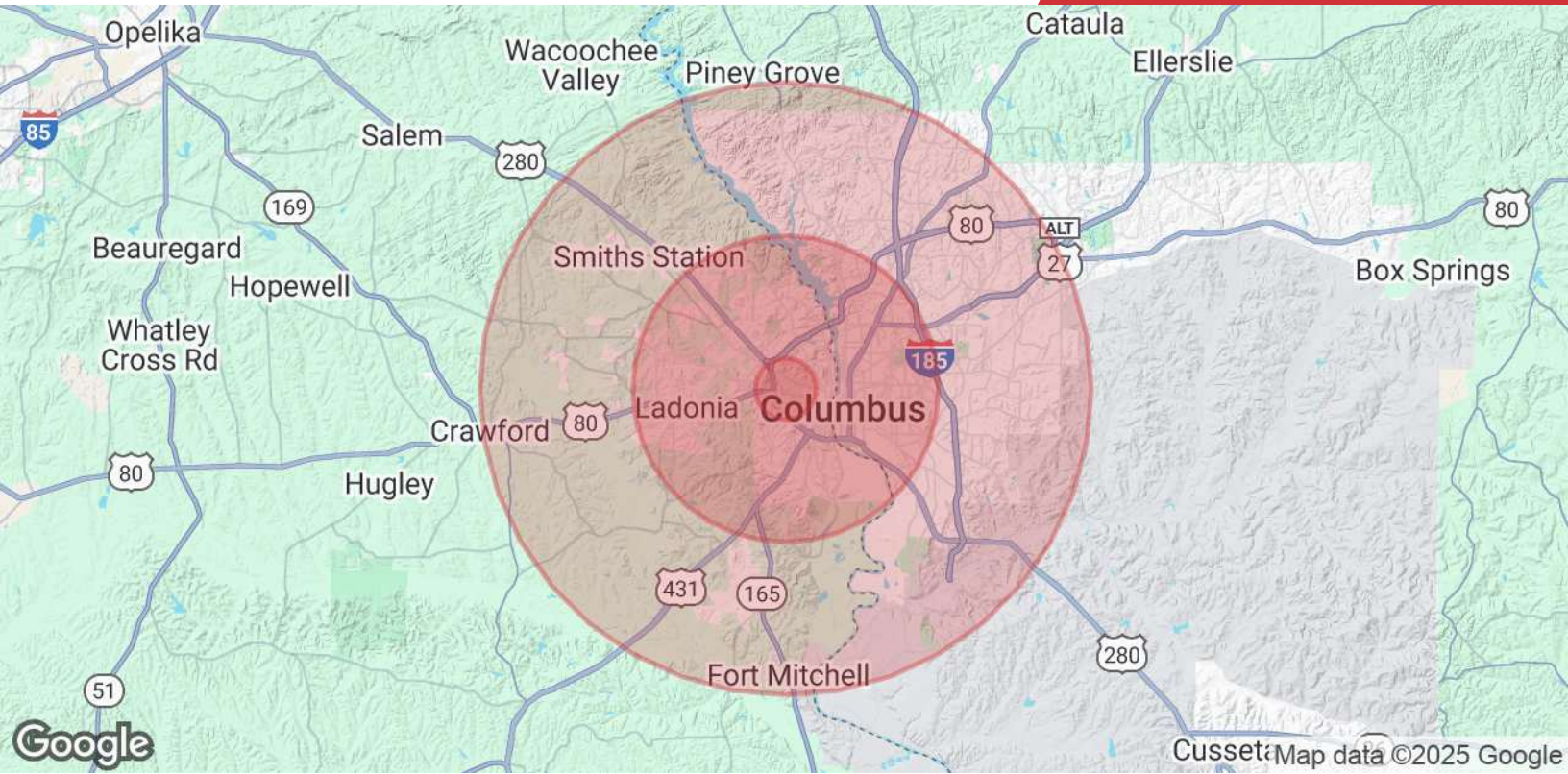
We obtained the information above from sources we believe to be reliable. However, we have not verified its accuracy and make no guarantee, warranty or representation about it. It is submitted subject to the possibility of errors, omissions, change of price, rental or other conditions, prior sale, lease or financing, or withdrawal without notice. We include projections, opinions, assumptions or estimates for example only, and they may not represent current or future performance of the property. You and your tax and legal advisors should conduct your own investigation of the property and transaction.

Post Office Box 4529  
 Columbus, GA 31904  
 706 660 5418 tel  
**G2cre.com**



We obtained the information above from sources we believe to be reliable. However, we have not verified its accuracy and make no guarantee, warranty or representation about it. It is submitted subject to the possibility of errors, omissions, change of price, rental or other conditions, prior sale, lease or financing, or withdrawal without notice. We include projections, opinions, assumptions or estimates for example only, and they may not represent current or future performance of the property. You and your tax and legal advisors should conduct your own investigation of the property and transaction.

Post Office Box 4529  
Columbus, GA 31904  
706 660 5418 tel  
**G2cre.com**



<b>Population</b>	<b>1 Mile</b>	<b>5 Miles</b>	<b>10 Miles</b>
<b>Total Population</b>	6,462	106,181	268,860
<b>Average Age</b>	38	39	39
<b>Average Age (Male)</b>	0	0	0
<b>Average Age (Female)</b>	0	0	0
<b>Households &amp; Income</b>	<b>1 Mile</b>	<b>5 Miles</b>	<b>10 Miles</b>
<b>Total Households</b>	2,863	44,055	107,872
<b># of Persons per HH</b>	2.3	2.4	2.5
<b>Average HH Income</b>	\$55,024	\$70,437	\$76,510
<b>Average House Value</b>	\$150,465	\$220,021	\$223,035

Demographics data derived from AlphaMap

We obtained the information above from sources we believe to be reliable. However, we have not verified its accuracy and make no guarantee, warranty or representation about it. It is submitted subject to the possibility of errors, omissions, change of price, rental or other conditions, prior sale, lease or financing, or withdrawal without notice. We include projections, opinions, assumptions or estimates for example only, and they may not represent current or future performance of the property. You and your tax and legal advisors should conduct your own investigation of the property and transaction.