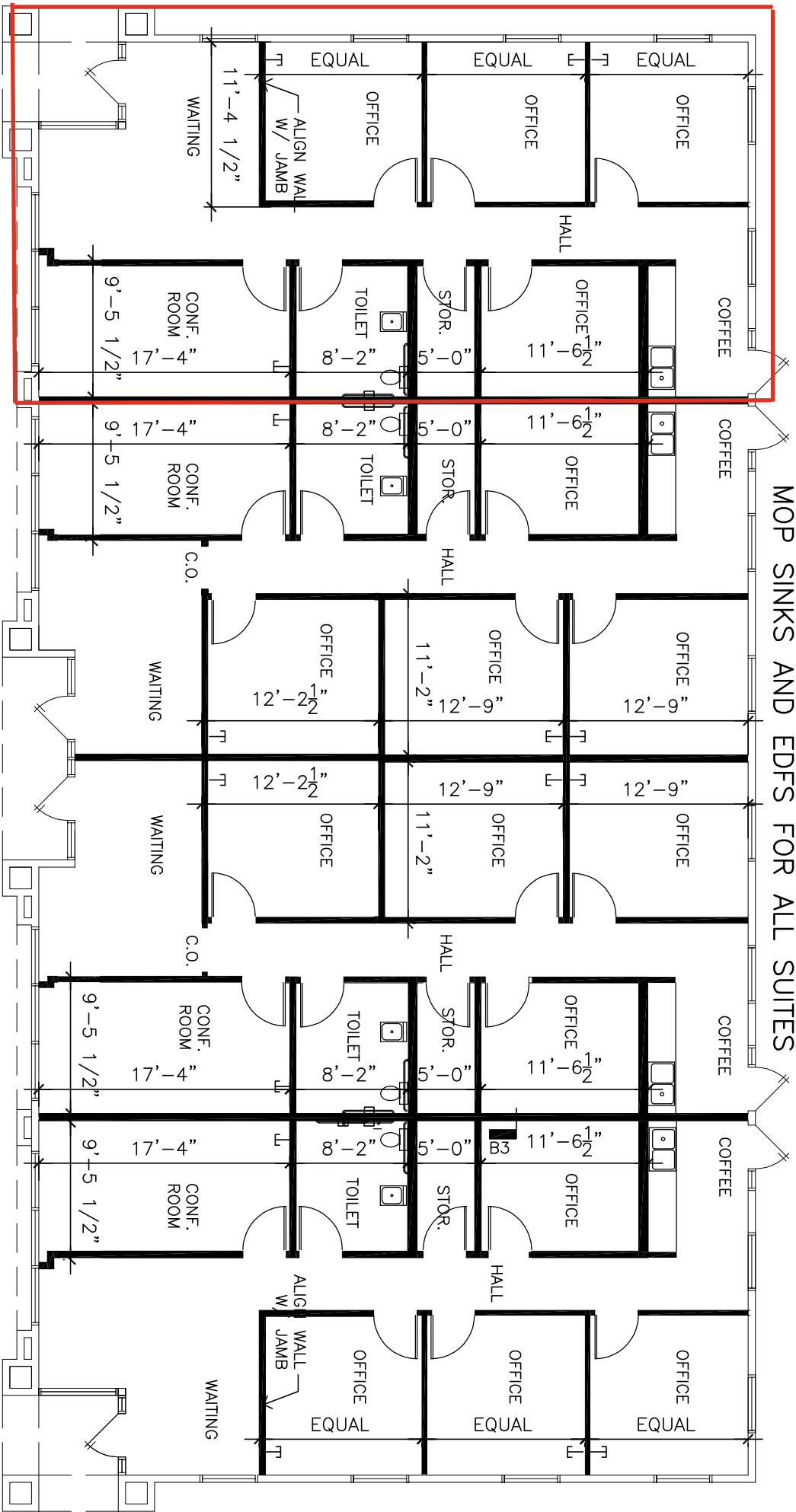


REFER TO ATTACHED M.E.P. DRAWINGS FOR ALL SUITES

NOTE! SHT. P-1 TO BE REVISED TO ELIMINATE MOP SINKS AND EDFS FOR ALL SUITES



NOTE! VERIFY PLUMBING STUBOUTS WITH PLUMBING DRAWINGS FOR LOCATIONS. IN THE EVENT OF A DISCREPANCY, THE PLUMBING DRAWINGS SHALL GOVERN

BUILDING NO. 5 FLOOR PLAN

1/8" = 1'-0"

REFER TO ATTACHED M E P DRAWINGS

