

Oxford Companies
734.665.6500
oxfordcompanies.com



Integrated
Real Estate
Services



Retail Property For Lease

Liberty Square

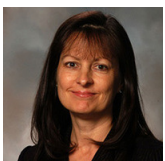
255 E. Liberty Street, Suite 279

Ann Arbor, MI 48104

818 SF

\$31.00 SF/yr (MG)

Available 8/1/2026



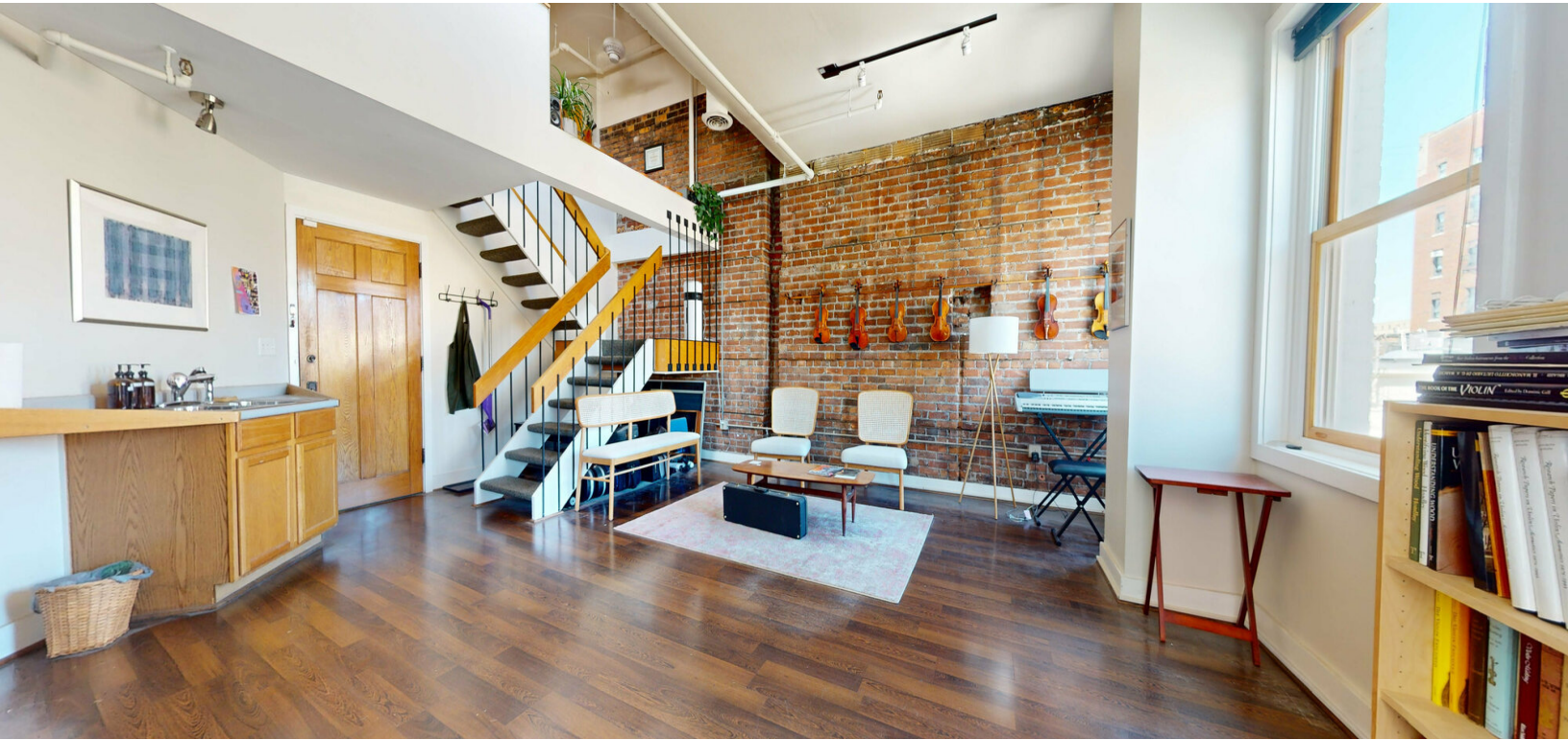
Contact Karen O'Neil for
more information or to
schedule a tour.

Office: 734.665.6500
Cell: 734.323.4263
koneil@oxfordcompanies.com

Liberty Square
255 E. Liberty Street, Suite 279
Ann Arbor, MI 48104



Integrated
Real Estate
Services



OFFERING SUMMARY

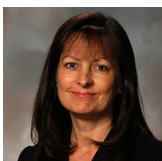
Lease Rate:	\$31.00 SF/yr (MG)
Building Size:	24,319 SF
Available SF:	818 SF
Lot Size:	0.35 Acres
Zoning:	D1

PROPERTY OVERVIEW

Liberty Plaza is a fantastic location for businesses looking to relocate to downtown Ann Arbor. Lower level retail and second-story office spaces in this building are perfect for organizations that want high visibility and a steady stream of passersby. Liberty Plaza's brick exterior and abundance of tall windows give an air of charm and uniqueness. Because of its downtown Ann Arbor location, Liberty Plaza seamlessly connects you to the pulse of the area's world-class bars and restaurants.

PROPERTY HIGHLIGHTS

- Upper level office space with plenty of natural light and high ceilings
- Main floor plus a mezzanine allows for a flexible office layout
- Located in downtown Ann Arbor, steps from the University of Michigan campus
- Neighbored by popular restaurants and retail shops
- Underground and above-ground parking structures one block away
- Streamlined leasing experience for convenience and ease
- Professionally managed with 24/7 on-call emergency maintenance



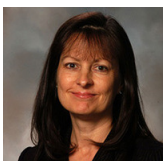
Contact Karen O'Neil for more information or to schedule a tour.

Office: 734.665.6500
Cell: 734.323.4263
koneil@oxfordcompanies.com

Liberty Square
255 E. Liberty Street, Suite 279
Ann Arbor, MI 48104



Integrated
Real Estate
Services



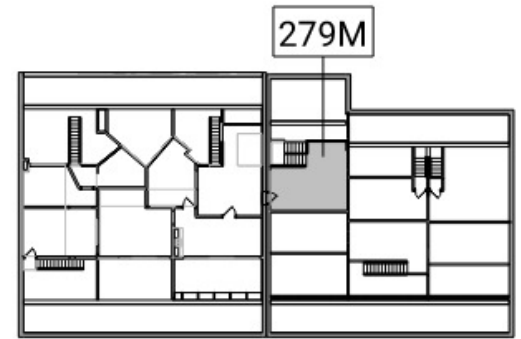
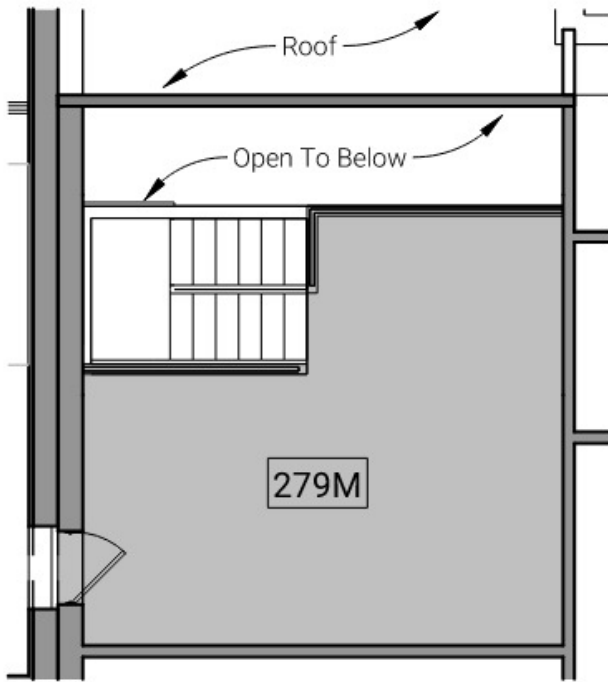
Contact Karen O'Neil for
more information or to
schedule a tour.

Office: 734.665.6500
Cell: 734.323.4263
koneil@oxfordcompanies.com

Liberty Square
255 E. Liberty Street, Suite 279
Ann Arbor, MI 48104

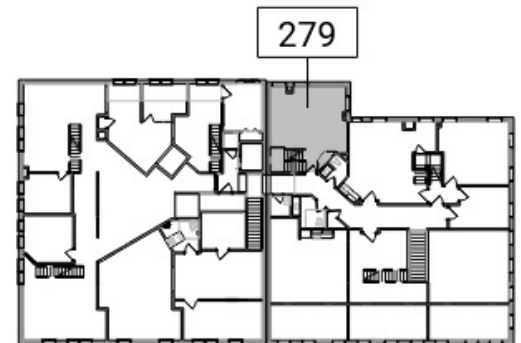
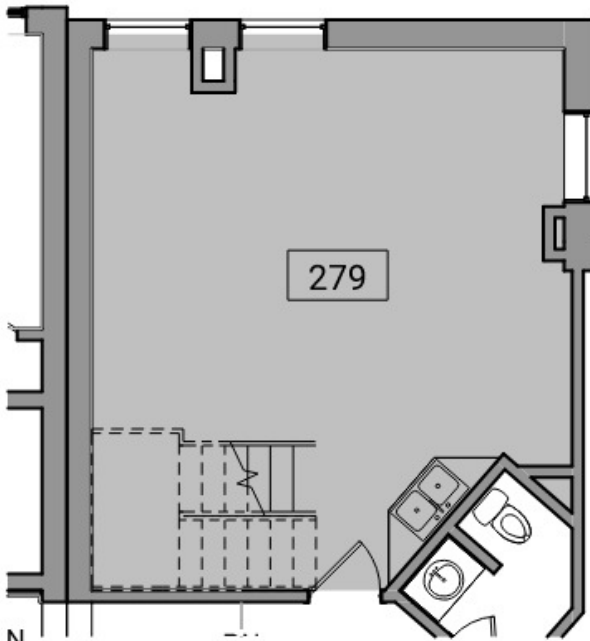


Integrated
Real Estate
Services



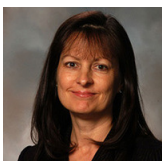
4 Suite 279 - Partial Mezzanine Existing Plan
1/8" = 1'-0"
4' 8'

3 Key Plan - Mezzanine Level
1" = 50'-0"
25' 50'



2 Suite 279 - Partial Level 02 Existing Plan
1/8" = 1'-0"
4' 8'

1 Key Plan - Level 02
1" = 50'-0"
25' 50'



Contact Karen O'Neil for more information or to schedule a tour.

Office: 734.665.6500
Cell: 734.323.4263
koneil@oxfordcompanies.com

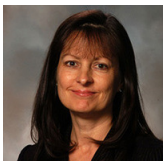
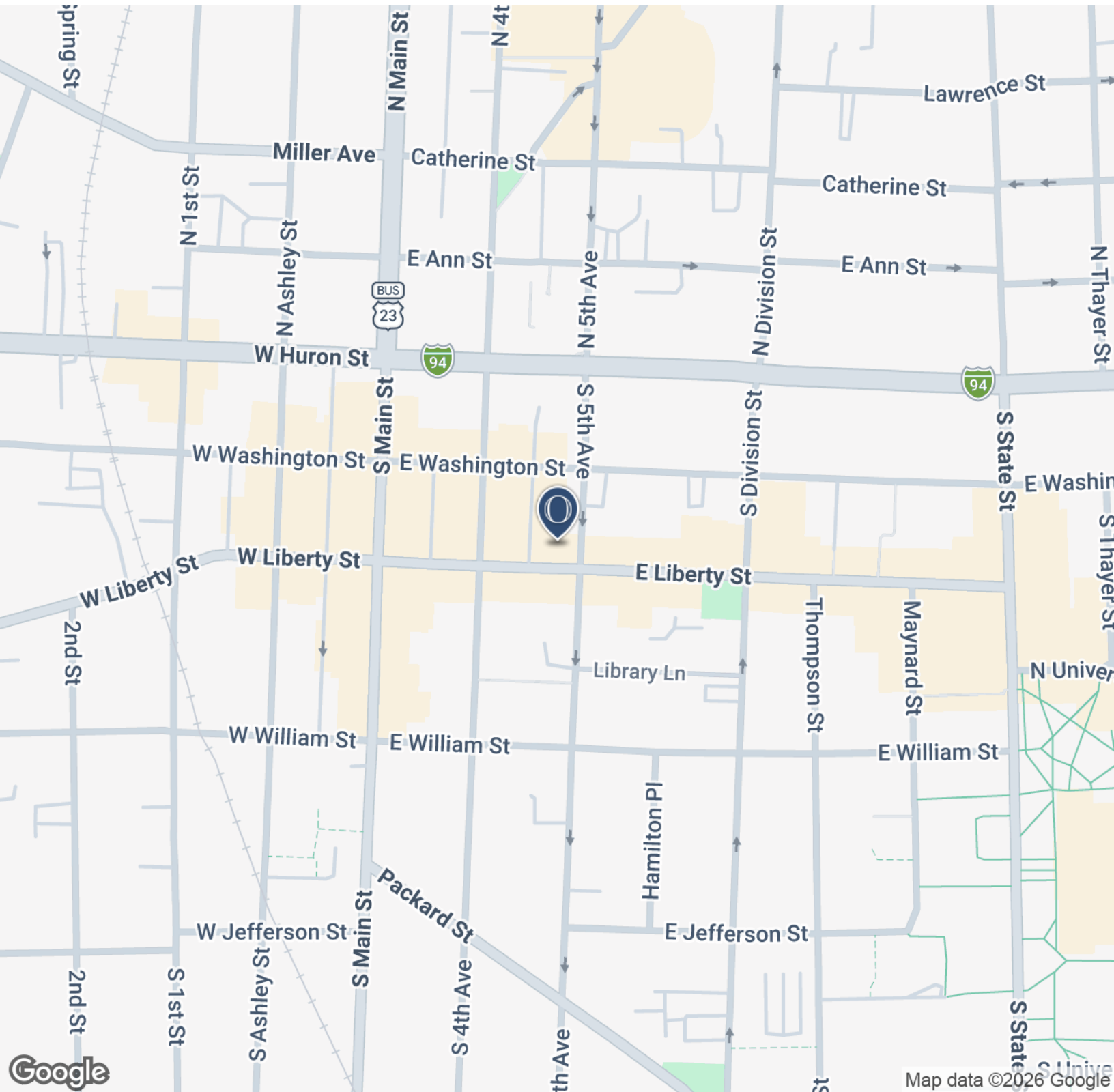
Liberty Square

255 E. Liberty Street, Suite 279

Ann Arbor, MI 48104



Integrated
Real Estate
Services



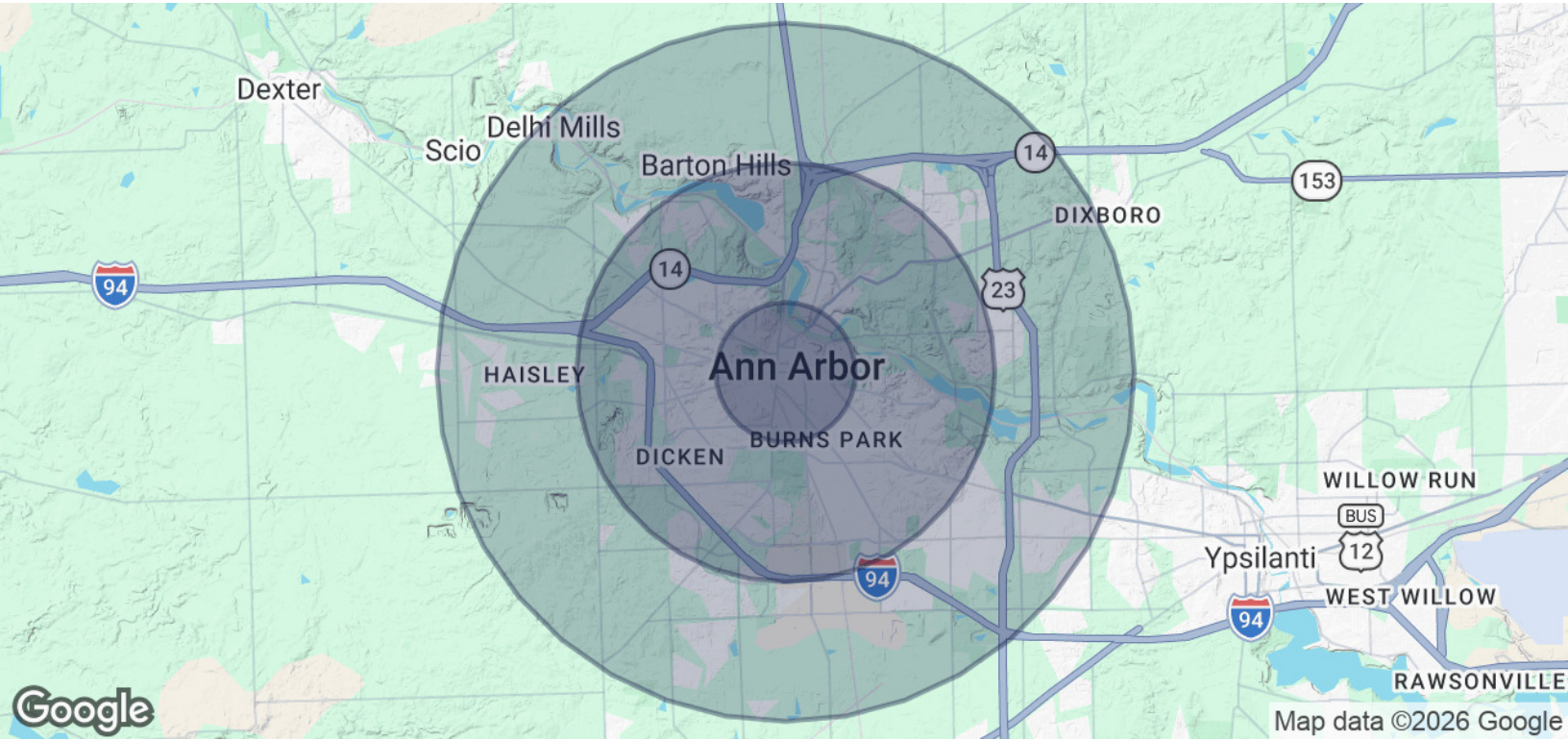
Contact Karen O'Neil for
more information or to
schedule a tour.

Office: 734.665.6500
Cell: 734.323.4263
koneil@oxfordcompanies.com

Liberty Square
 255 E. Liberty Street, Suite 279
 Ann Arbor, MI 48104



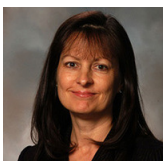
Integrated
 Real Estate
 Services



POPULATION	1 MILE	3 MILES	5 MILES
Total Population	35,860	106,197	156,485
Average Age	29	35	37
Average Age (Male)	29	35	36
Average Age (Female)	29	36	38

HOUSEHOLDS & INCOME	1 MILE	3 MILES	5 MILES
Total Households	13,124	42,953	65,142
# of Persons per HH	2.7	2.5	2.4
Average HH Income	\$77,506	\$120,812	\$125,739
Average House Value	\$525,399	\$541,087	\$505,497

Demographics data derived from AlphaMap



Contact Karen O'Neil for more information or to schedule a tour.

Office: 734.665.6500
 Cell: 734.323.4263
koneil@oxfordcompanies.com