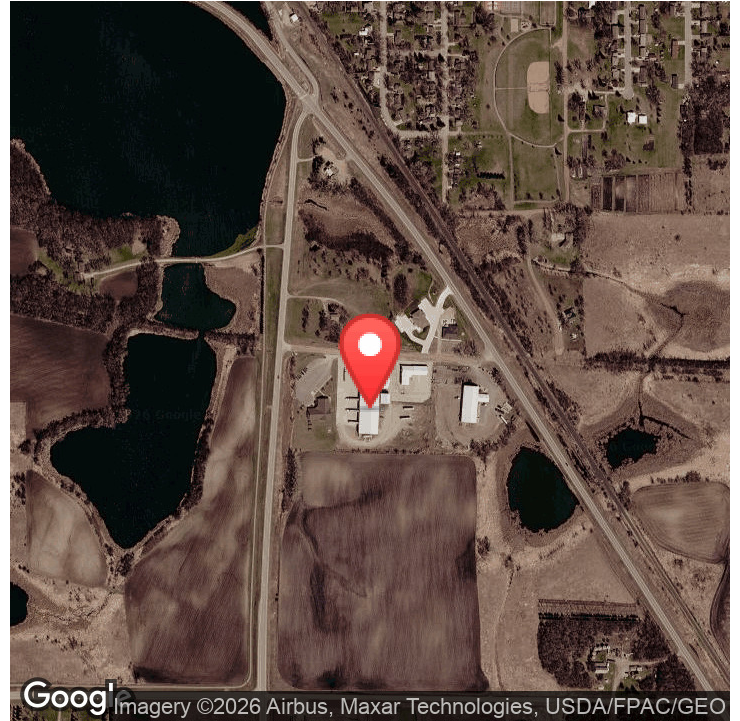


## EXECUTIVE SUMMARY

# 511 INDUSTRIAL PARK BLVD, ELBOW LAKE, MN 56531



### OFFERING SUMMARY

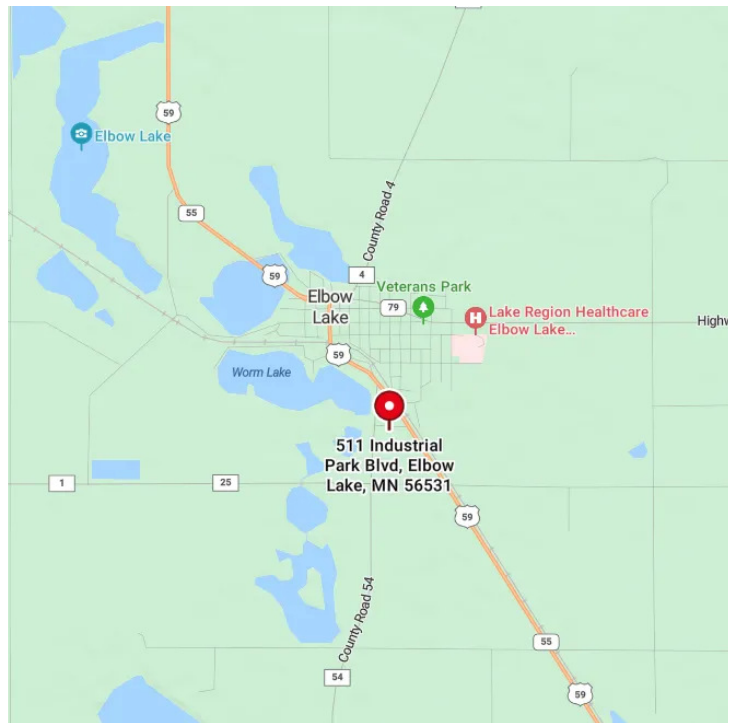
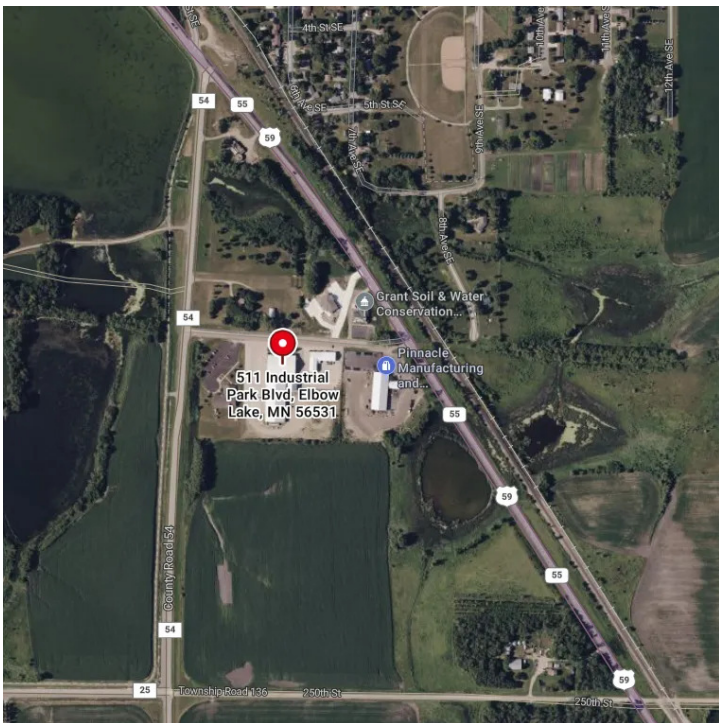
Sale Price:	\$992,397
Building Size:	47,257 SF
Available SF:	
Lot Size:	5 Acres
Price / SF:	\$21.00
Year Built:	1993
Zoning:	Commercial

### PROPERTY HIGHLIGHTS

- Lot Size 5 Acres
- 47,257 SF
- Zone: Commercial
- Industrial Warehouse
- Paved Parking and Ample Space for Truck Access and Operations
- Convenient Access to Regional Roadways

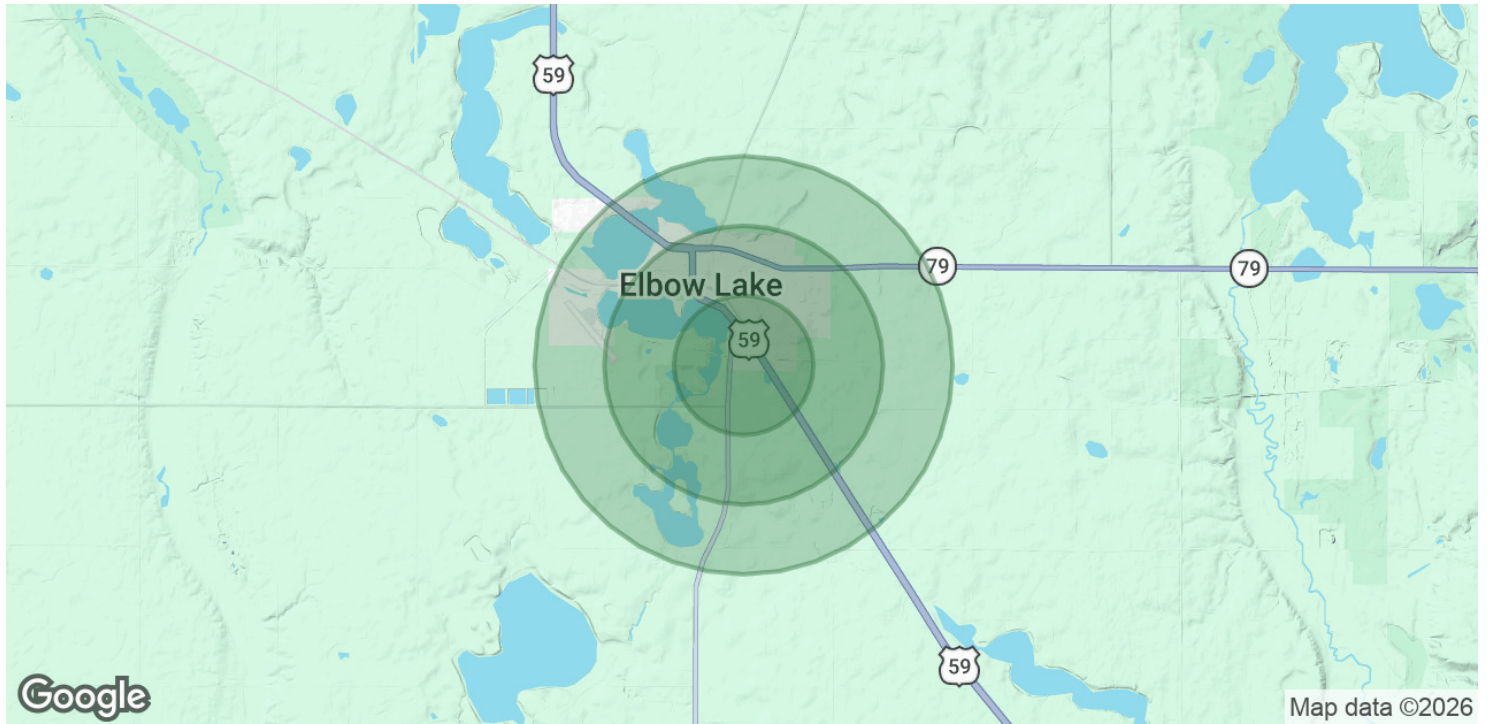
ADDITIONAL PHOTOS

511 INDUSTRIAL PARK BLVD, ELBOW LAKE, MN 56531



## DEMOGRAPHICS MAP & REPORT

### 511 INDUSTRIAL PARK BLVD, ELBOW LAKE, MN 56531



POPULATION	0.5 MILES	1 MILE	1.5 MILES
Total Population	114	376	774
Average Age	39.9	39.5	39.6
Average Age (Male)	36.0	35.7	35.8
Average Age (Female)	42.6	42.1	42.2

HOUSEHOLDS & INCOME	0.5 MILES	1 MILE	1.5 MILES
Total Households	47	152	315
# of Persons per HH	2.4	2.5	2.5
Average HH Income	\$80,077	\$81,079	\$80,914
Average House Value	\$137,254	\$136,456	\$137,082

2023 American Community Survey (ACS)