



2378 Woodlake Dr

Okemos, Michigan 48864

Property Highlights

- Suite 200: 2,530 SF available immediately
- Suite 240: 5,371 SF ready to be built out to specification
- Immediate access to Interstate 96 Okemos Rd interchange
- Surrounded by lodging, dining, and shopping
- Professionally owned and managed

Offering Summary

Lease Rate:	\$15.00 SF/yr (MG)
Building Size:	9,036 SF
Available SF:	2,530 - 5,371 SF
Lot Size:	41,927 SF

Spaces	Lease Rate	Space Size
200	\$15.00 SF/yr	2,530 SF
240	\$15.00 SF/yr	5,371 SF

For More Information

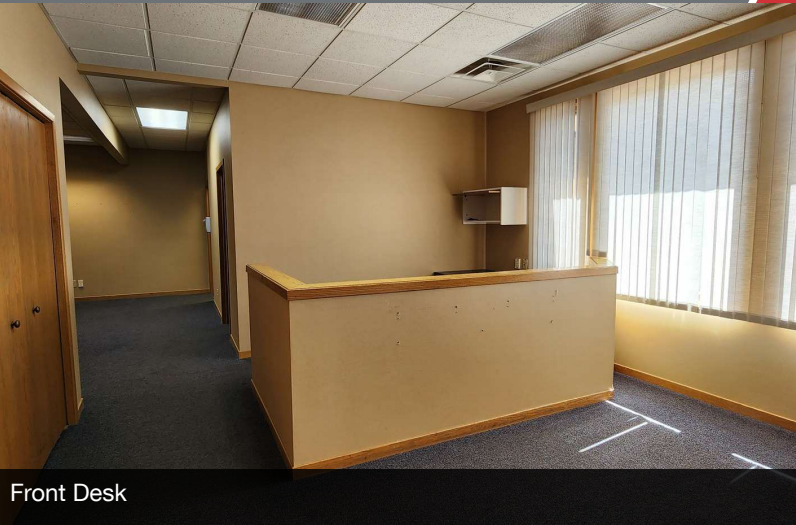


Jeffrey Branch

Associate Broker

O: 517 487 9222 | C: 517 899 6368

jbranch@naimidmichigan.com



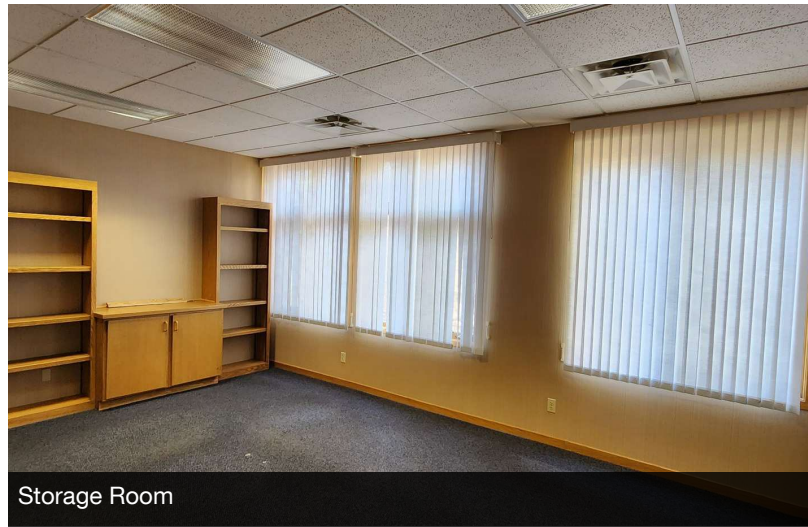
Front Desk



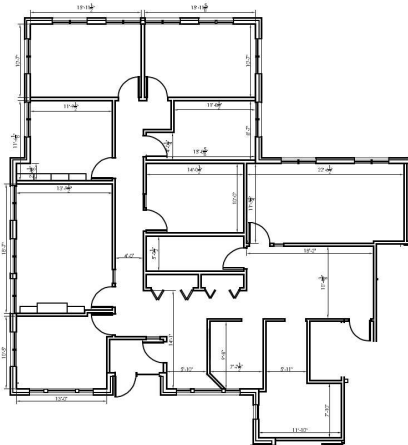
Hallway



Kitchenette

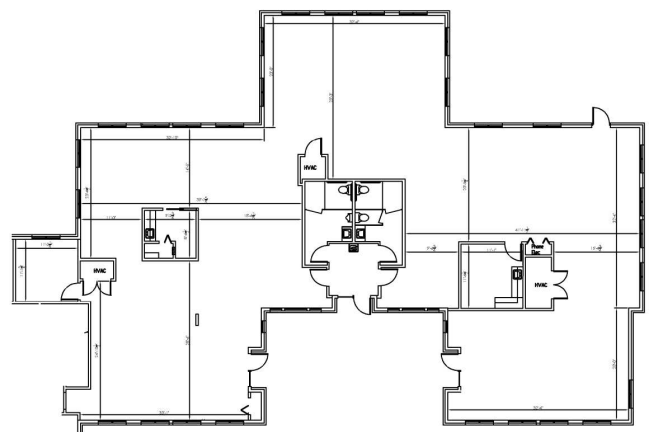


Storage Room



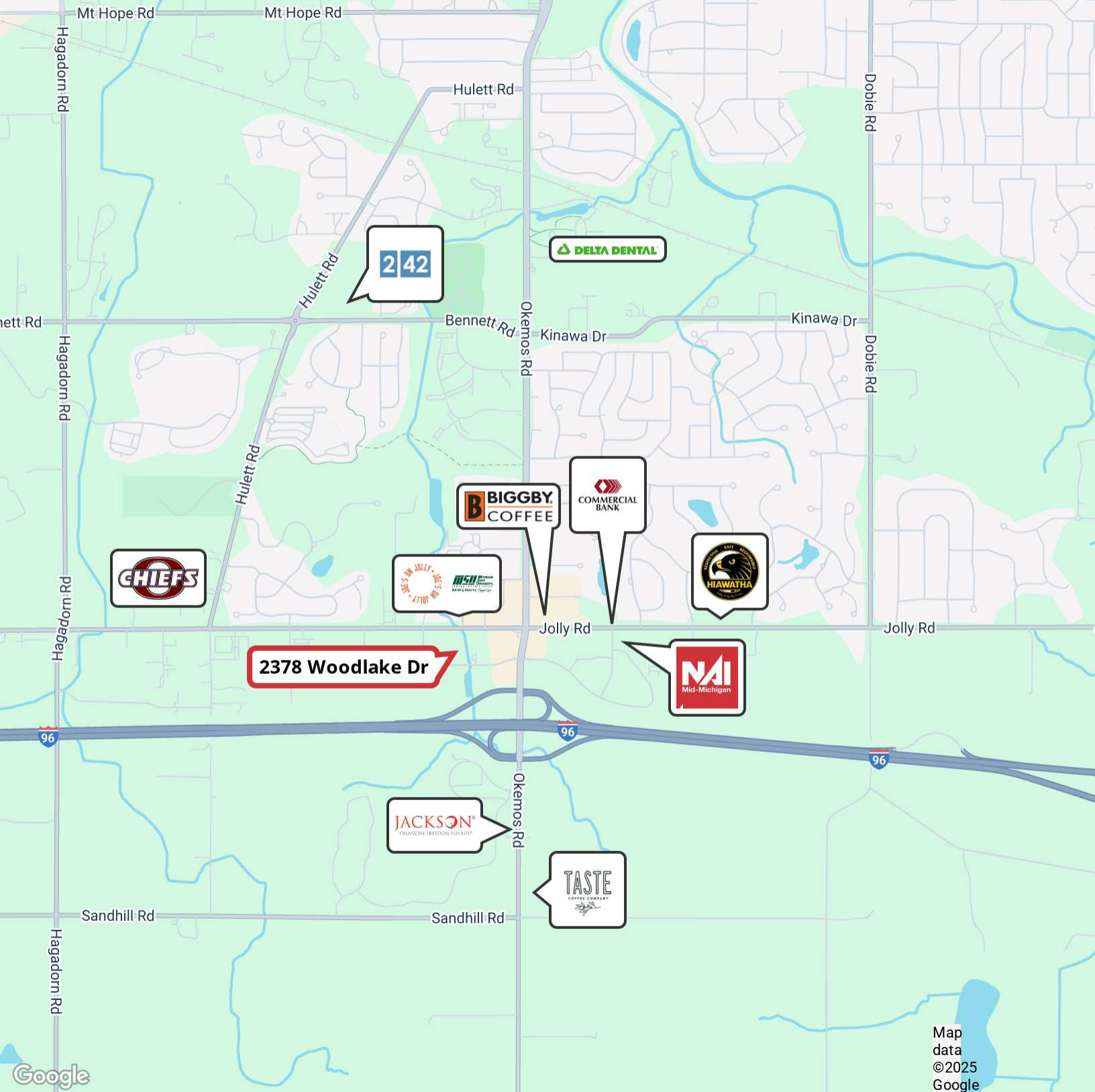
Suite 200

USEABLE AREA: 2,332 SF
RENTABLE AREA: 2,530 SF



Suite 240

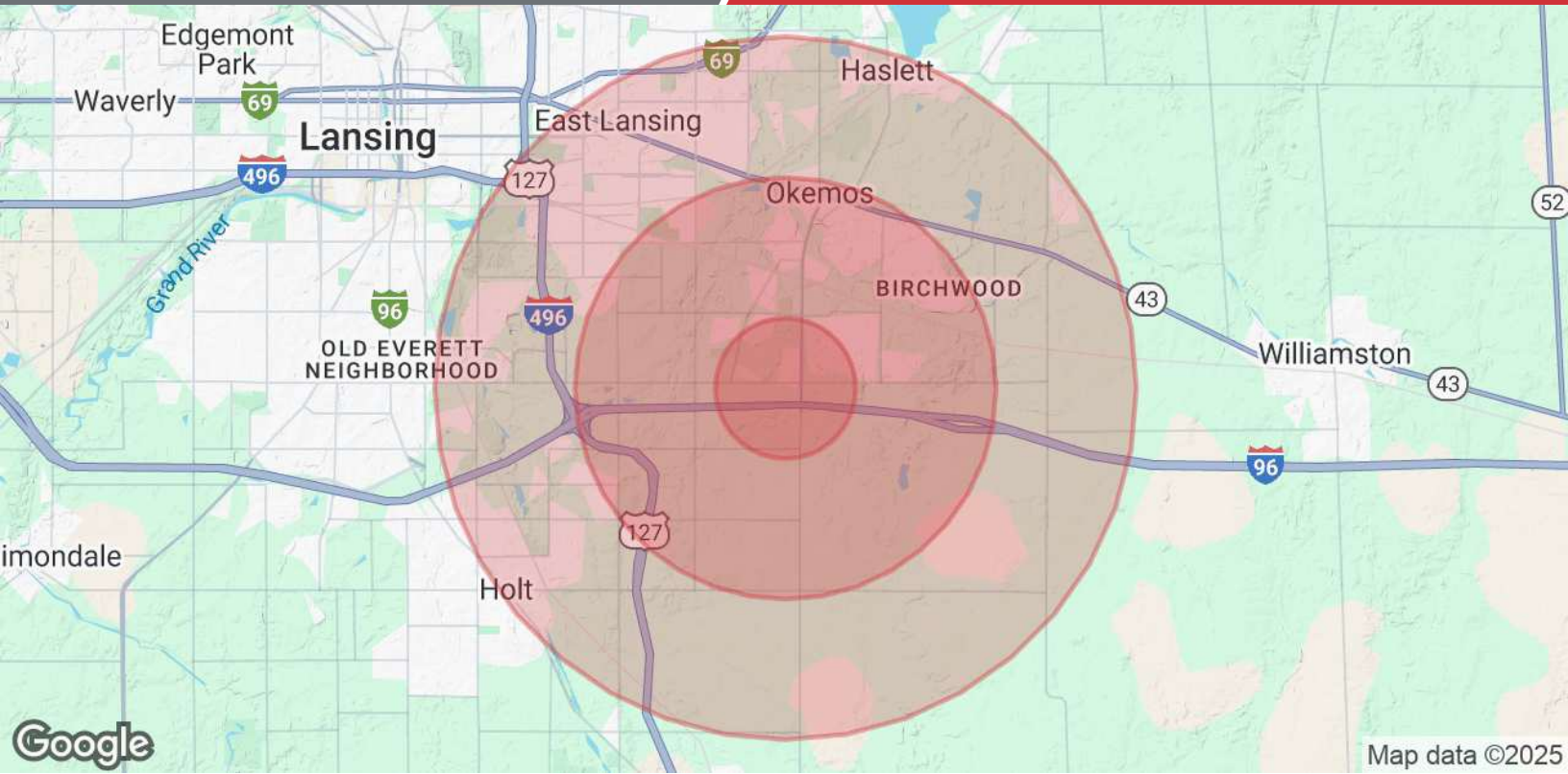
USEABLE AREA: 5,233 SF
RENTABLE AREA: 5,371 SF



Map data ©2025 Google

NO WARRANTY OR REPRESENTATION, EXPRESS OR IMPLIED, IS MADE AS TO THE ACCURACY OF THE INFORMATION CONTAINED HEREIN, AND THE SAME IS SUBMITTED SUBJECT TO ERRORS, OMISSIONS, CHANGE OF PRICE, RENTAL OR OTHER CONDITIONS, PRIOR SALE, LEASE OR FINANCING, OR WITHDRAWAL WITHOUT NOTICE, AND OF ANY SPECIAL LISTING CONDITIONS IMPOSED BY OUR PRINCIPALS NO WARRANTIES OR REPRESENTATIONS ARE MADE AS TO THE CONDITION OF THE PROPERTY OR ANY HAZARDS CONTAINED THEREIN ARE INTENDED TO BE IMPLIED

2149 Jolly Road, Suite 200
Okemos, MI 48864
517 487 9222 tel
naimidmichigan.com



Population

	1 Mile	3 Miles	5 Miles
Total Population	4,518	22,510	94,925
Average Age	38	39	34
Average Age (Male)	37	38	34
Average Age (Female)	38	40	35

Households & Income

	1 Mile	3 Miles	5 Miles
Total Households	1,759	8,973	35,026
# of Persons per HH	2.6	2.5	2.7
Average HH Income	\$131,926	\$130,302	\$94,024
Average House Value	\$402,996	\$366,628	\$252,435

Demographics data derived from AlphaMap