

**Sandy Meyer**  
314-863-3700  
SMeyer@stlcre.com

**Sabina A Holtzman, CCIM**  
314-863-3700  
SHoltzman@stlcre.com



# RIVERPORT OFFICE CENTER

13640-13690 Riverport Dr. | St. Louis, MO 63043



[HOME](#)

[HIGHLIGHTS](#)

[AVAILABILITY](#)

[MAP](#)

[PHOTOS](#)

## PROPERTY HIGHLIGHTS

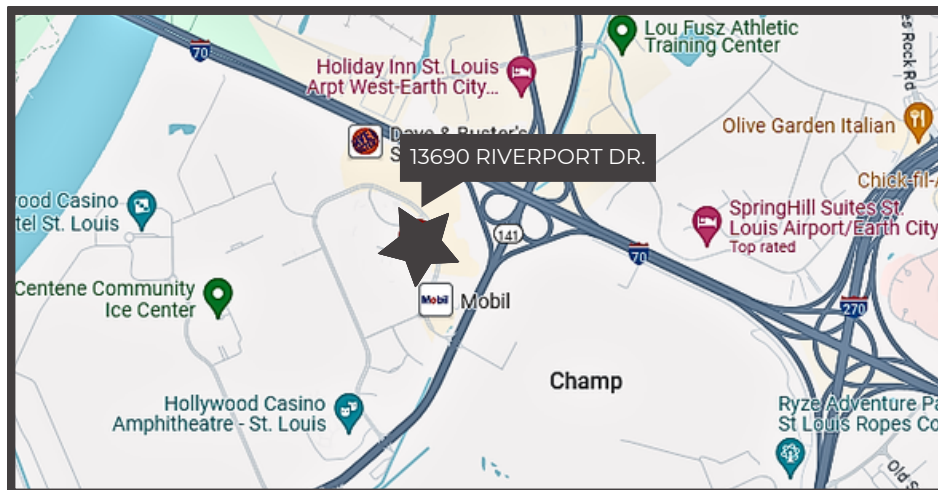
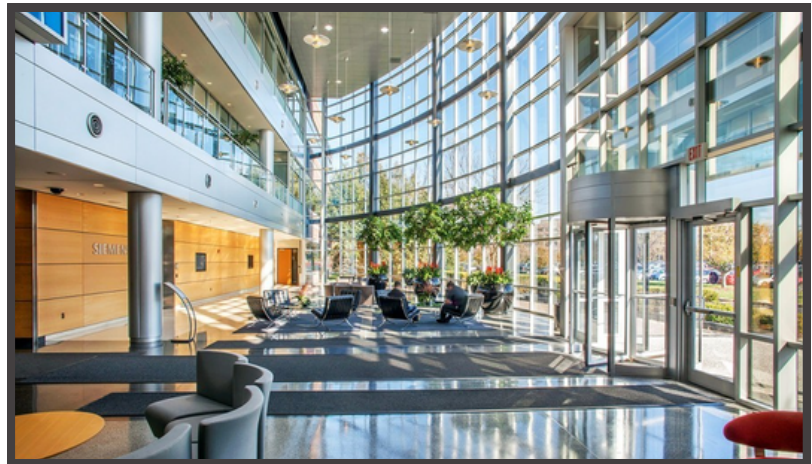
13690 Riverport Drive is a Class A office building with high-end finishes. The property is well located in the Riverport Business Park, and is centrally located in the St. Louis metropolitan area near the intersection of I-270 and I-70, providing access to the interstate highway system and the entire metropolitan area. Some FF&E available within the available spaces.

### Amenities & Features

- Three-Story Atrium;
- Sofa Furniture, Fixtures, and Equipment available within select suites;
- Ample Parking;
- Common Area Breakroom;
- Area Amenities including nearby Hotels and Restaurants; and
- 2025 Asking Rates **from \$14.00/RSF** provided certain Lease Terms & Tenant Credit are met.

## BUILDING INFORMATION

13690 RIVERPORT DRIVE AT-A-GLANCE	
Year Built	2001
Total Contiguous Available Space	65,680 RSF
Divisible?	Yes
Floors	3
Parking Ratio	4.5:1,000



Information contained herein has been obtained from the owner of the property or from other sources & is subject to change without notice. The broker & owner do not guarantee the accuracy of this information. Broker is a member of ownership. Owners & broker make no representation as to the environmental or other conditions of the property & recommend that tenant or purchaser investigate fully.

## SPACE AVAILABLE

**SANDY MEYER**

314-863-3700

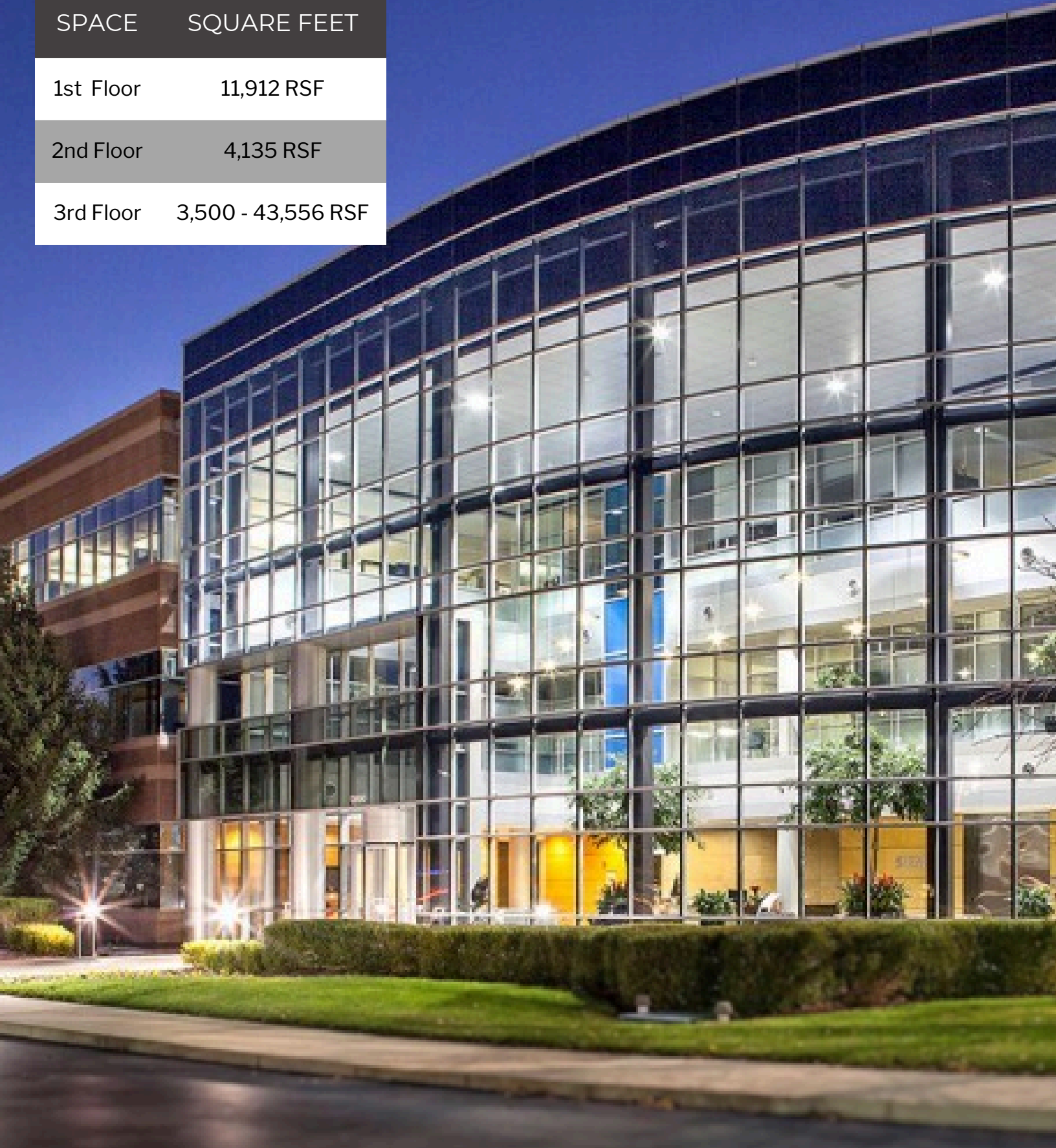
[SMEYER@STLCRE.COM](mailto:SMEYER@STLCRE.COM)

**SABINA A HOLTZMAN, CCIM**

314-863-3700

[SHoltzman@stlcre.com](mailto:SHoltzman@stlcre.com)

SPACE	SQUARE FEET
1st Floor	11,912 RSF
2nd Floor	4,135 RSF
3rd Floor	3,500 - 43,556 RSF



## 1ST FLOOR

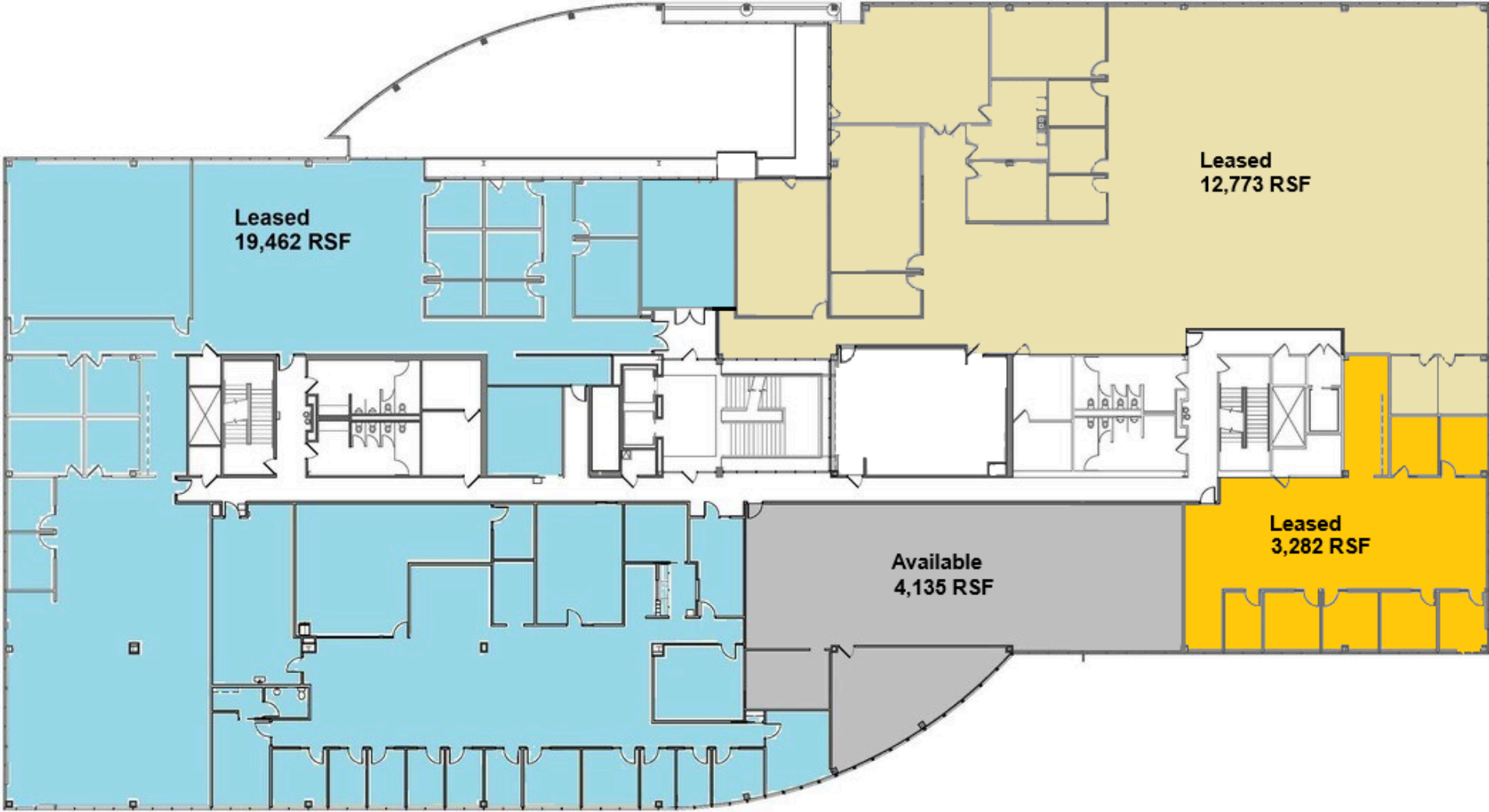
- 11,912 RSF (Loaded)
- 2 Private Offices
- 3 Conference Rooms
- Open Offices





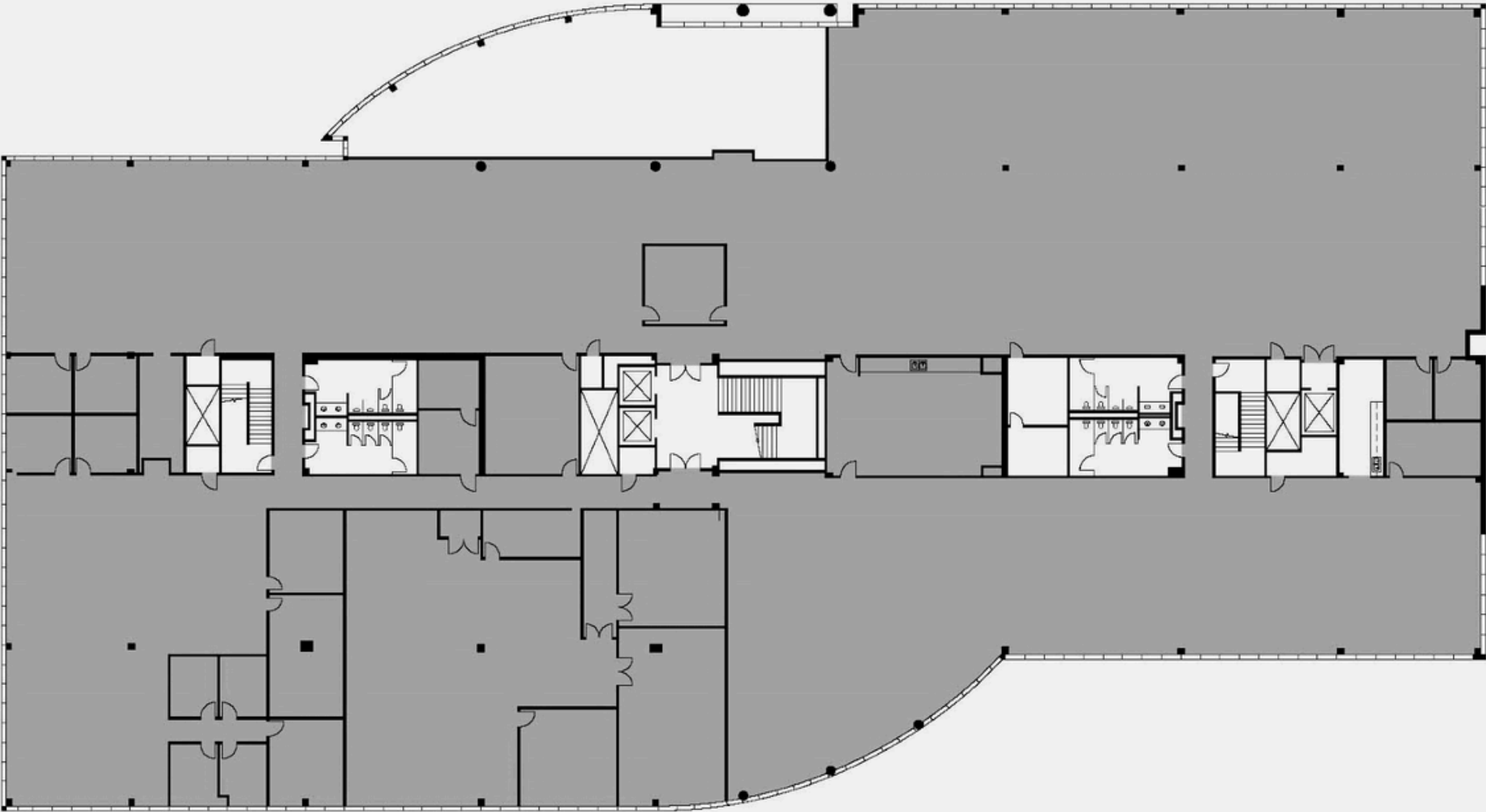
# SECOND FLOOR

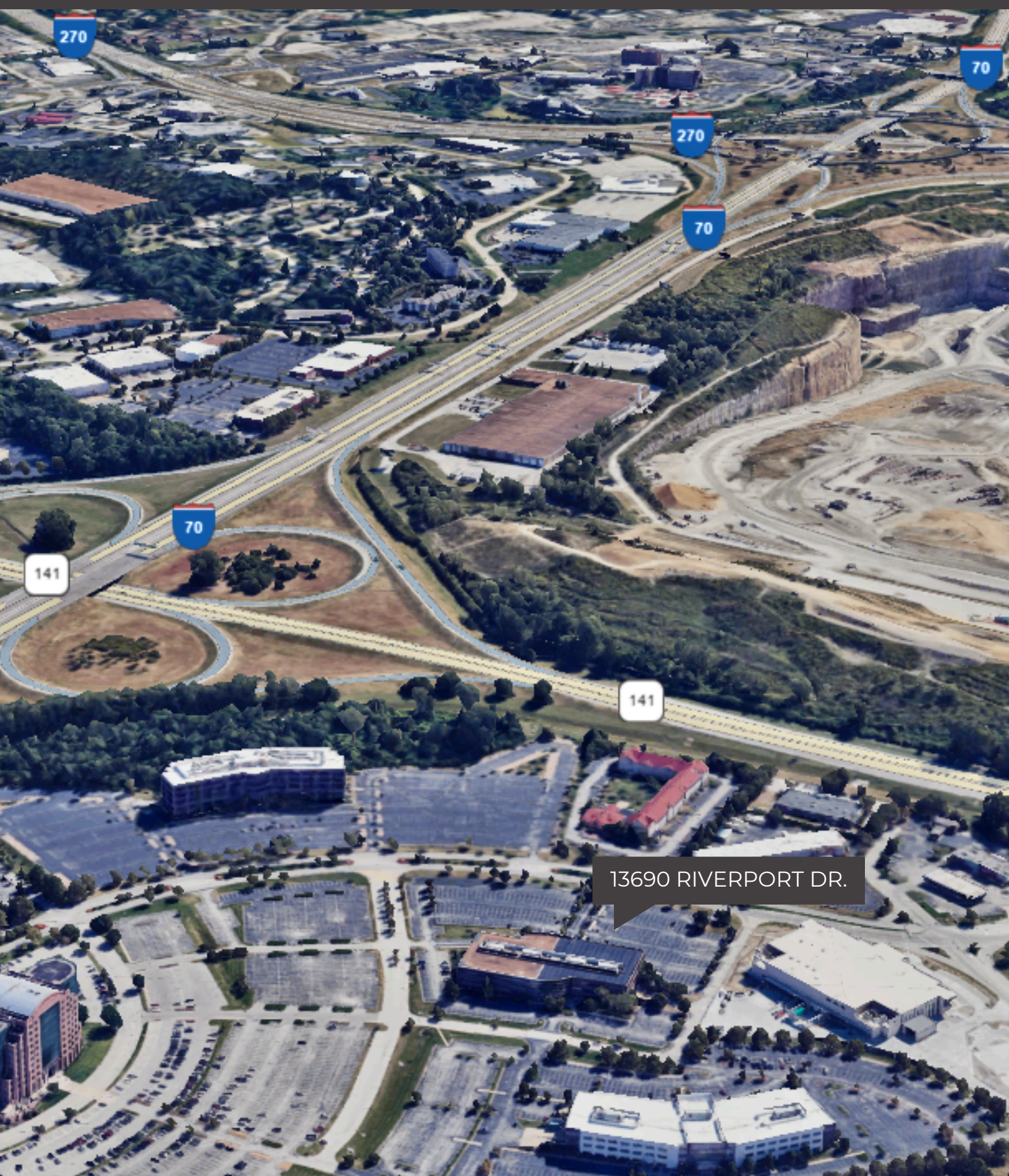
4,135 Square Feet



# THIRD FLOOR

43,556 Square Feet

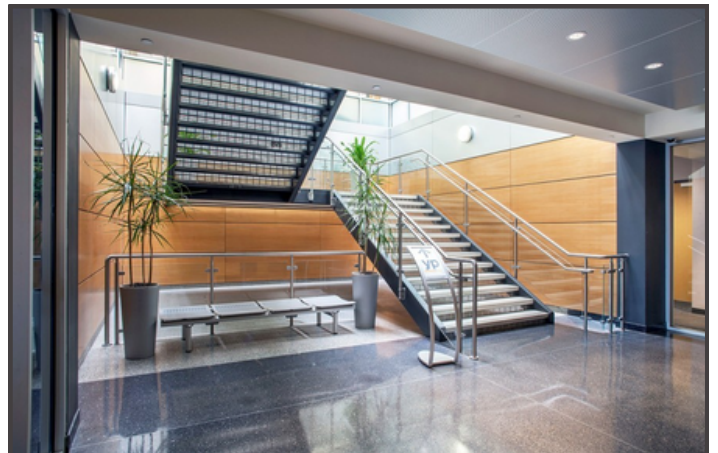




13690 RIVERPORT DR.



Riverport Dr.



Interior Photos

Building Lobby