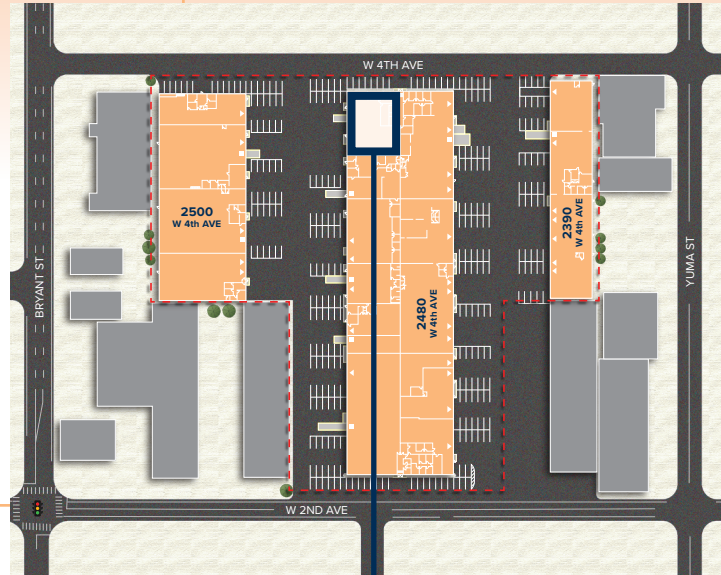


BRYANT STREET QUAD



▲ Dock Door
■ Drive-in Door



UNIT 28 7,434 SF

BUILDING 2
2480 W 4th Ave, Denver, CO 80219

AVAILABLE SF ±7,434 SF

OFFICE SIZE ±1,500 SF

CLEAR HEIGHT 15'

LOADING 2 Docks & 1 Drive-in

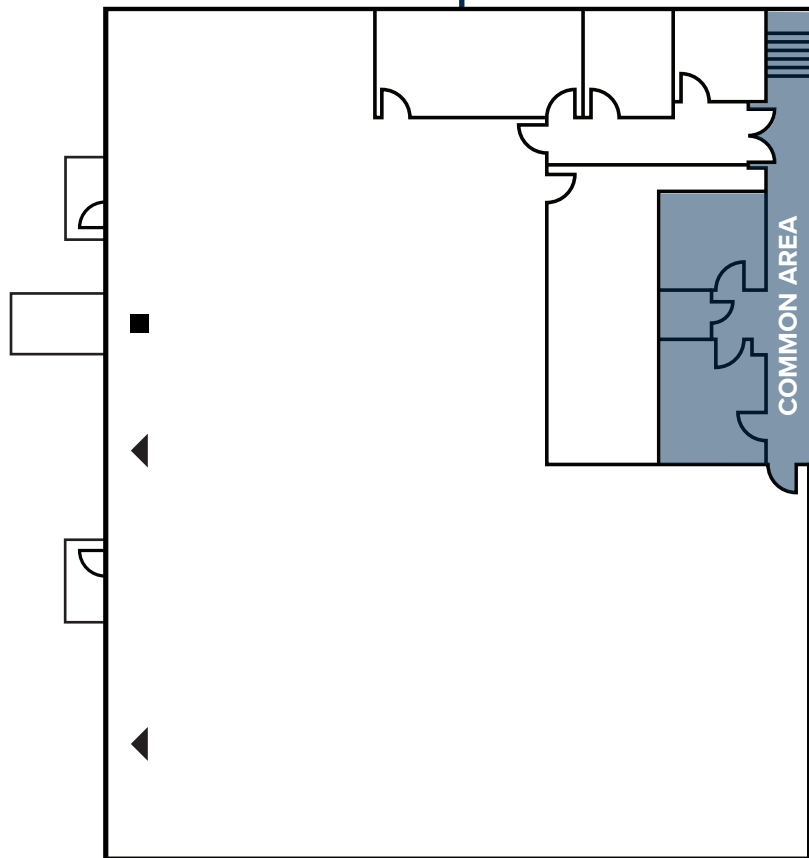
ZONING I-1

YEAR BUILT 1970

PARKING 12 Spaces

OPEX \$4.93 (Est. 2026)

LEASE RATE Contact Brokers



NIC CARTER
Vice President
+1 720 528 6477
nic.carter@cbre.com

SAM DRAGAN
First Vice President
+1 303 264 1932
sam.dragan@cbre.com

JEREMY BALLENGER
Executive Vice President
+1 303 264 1902
jeremy.ballenger@cbre.com

TYLER CARNER
Executive Vice President
+1 303 264 1903
tyler.carner@cbre.com

CBRE