



COMMERCIAL | COMMERCIAL

OFFICE SPACE FOR SUBLEASE

1097 S. Lapeer Rd.

Oxford, Michigan 48371 | Oakland County

TOTAL SIZE
950 SF

MONTHLY RATE
\$1,500
Gross Lease

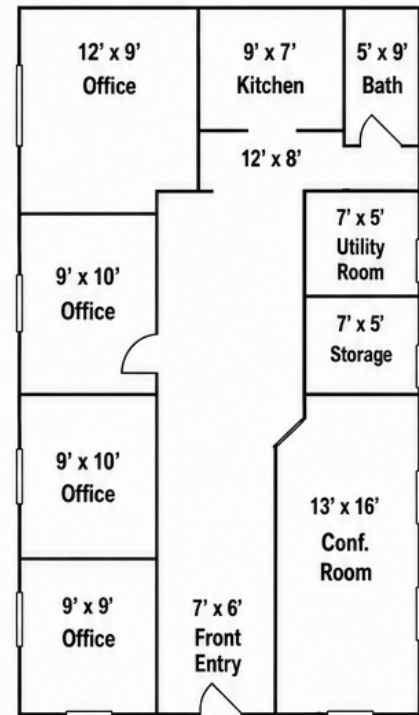
SUBLEASE TERM
2.5 Yrs
Remaining

AVAILABILITY
Immediate

LEASE TYPE
Gross
Tenant Pays Utilities



FLOOR PLAN



1097 S. Lapeer Rd., Oxford, MI

PROPERTY OVERVIEW

A rare opportunity to sublease a fully built-out, move-in ready professional office suite in one of Oakland County's fastest-growing communities. This charming, stand-alone 950 SF office building at 1097 S. Lapeer Road presents an ideal solution for businesses seeking a polished, functional space without long-term lease obligations. The interior features rich hardwood-style flooring, crown molding throughout, and a thoughtfully designed floor plan that balances private workspaces with client-facing amenities. The building's striking exterior — blue board-and-batten siding with a covered front porch — delivers excellent curb appeal and street presence in high-traffic M-24.

SPACE FEATURES & AMENITIES

- 3 Private Enclosed Offices
- Reception / Waiting Area
- Dedicated Storage Room
- 1 Bathroom
- Crown Molding Throughout
- Ample Parking On-Site
- Conference Room w/ Wall TV
- Full Kitchen / Break Room
- HVAC / Utility Room
- Hardwood-Style Flooring
- Covered Front Porch Entry
- Move-in Ready Condition

LEASE DETAILS

LEASE TYPE
Gross Lease

TERM REMAINING
Approx. 2.5 Years

SPACE SIZE
950 SF

MONTHLY RATE
\$1,500 / Month

UTILITIES
Tenant Responsible

OCCUPANCY
Immediate

LOCATION

Positioned on S. Lapeer Road (M-24) — one of Oxford Township's primary commercial corridors — this property benefits from strong daily traffic counts, excellent visibility, and convenient signage opportunity. Minutes from downtown Oxford Village, Lake Orion, and the I-75 interchange. Surrounded by established retail, medical, and professional services tenants.



COMMERCIAL | COMMERCIAL

Maurice Khalifa | Associate Broker
Realty Executives Commercial

586.615.0101

mauricek@realtyexecutives.com

Rene Nunner | Senior Advisor
Realty Executives Commercial

248.730.0500

renen@realtyexecutives.com

Information deemed reliable but not guaranteed.

© 2025 Realty Executives Southeast Michigan Commercial Division.