



Turnkey Medical / Professional Office

Fully built-out corner office suite - ready for immediate medical, dental, therapy or professional use

2,000+ SF

Built-Out Office

\$50 / SF

Asking Rent

Corner Location

Grand Concourse & E. 204th

< 1 Block

To Train Station

Property Overview

A real Bronx medical office opportunity: 2,000+ square feet of fully built-out space at 3050 Grand Concourse, positioned on the southeast corner of East 204th Street and the Grand Concourse. The suite is set up with existing clinical rooms, waiting area, reception, office/admin areas, file/storage room, lavatories and usable furniture/equipment. No blank box. No guessing. Bring the practice and open the doors.

Ideal Uses

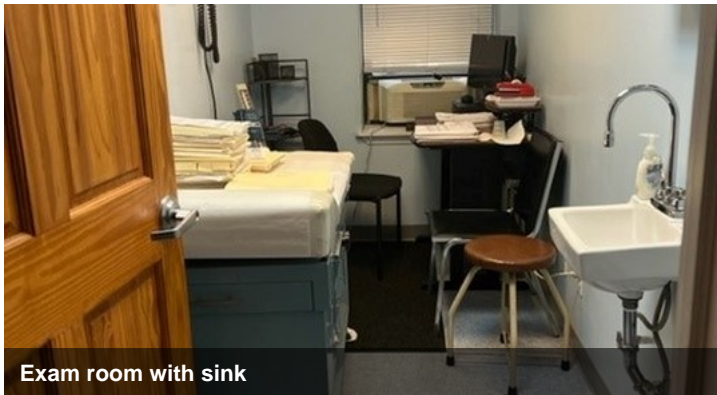
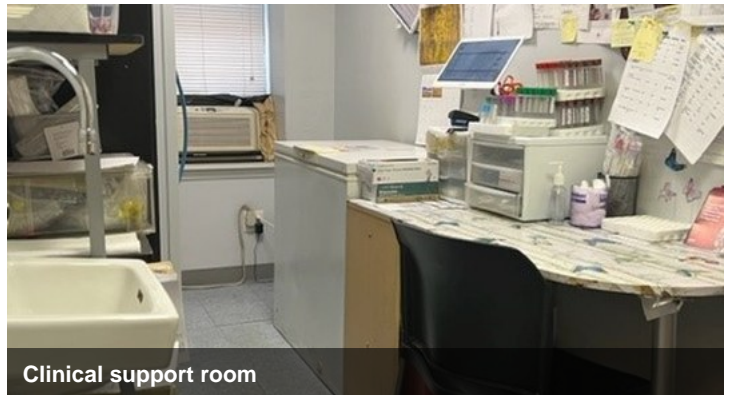
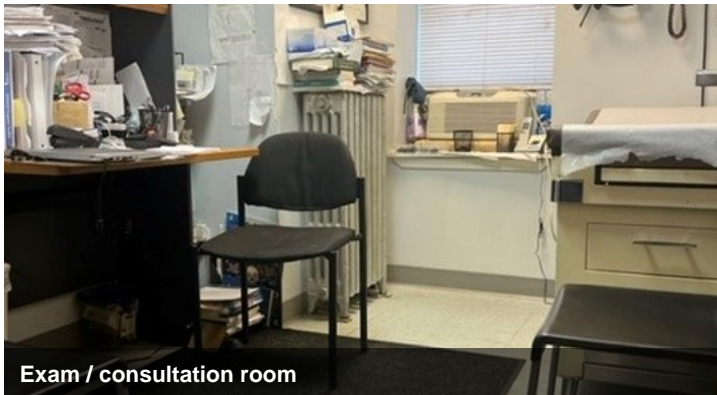
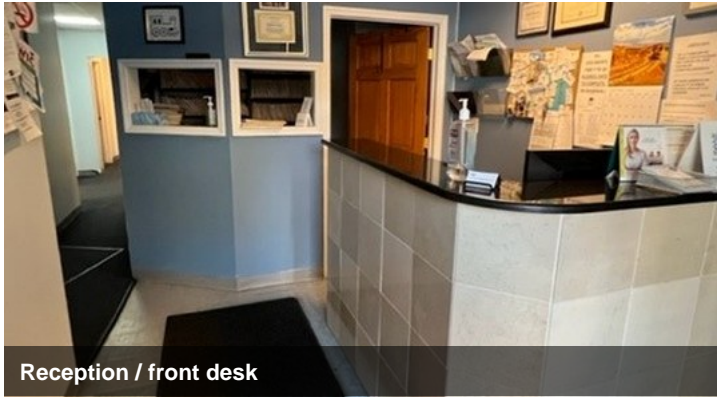
- Medical practice
- Dental or specialty healthcare
- Therapy / wellness / professional office
- Administrative or community services

Built-Out Features

- Multiple exam / treatment rooms
- Reception and waiting area
- Private office and staff room
- File/storage room and lavatories

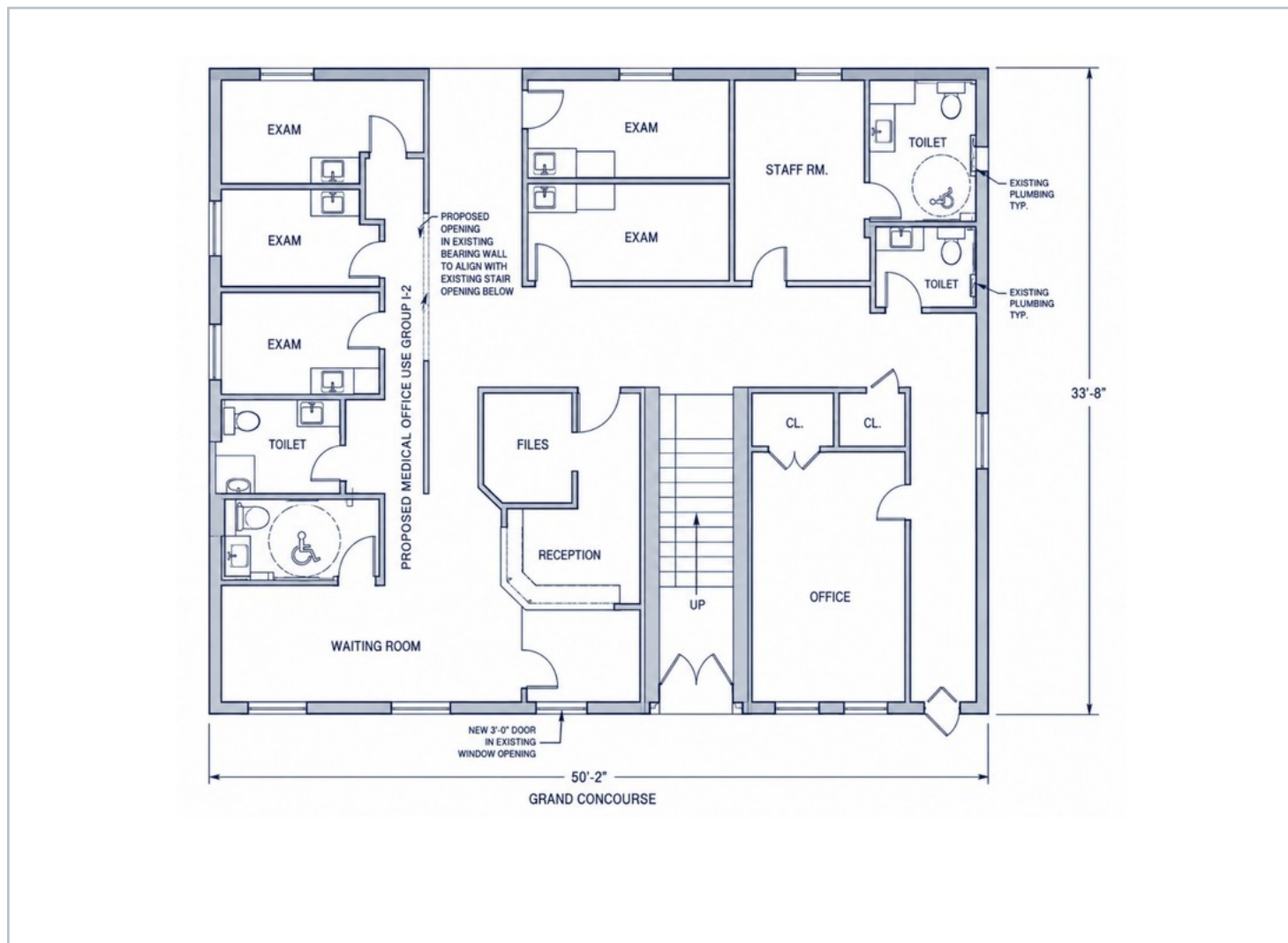
Interior Photo Tour

Existing medical build-out with exam rooms, sinks, waiting area, reception and support spaces.



Existing Layout / Floor Plan

Plan depicts waiting room, reception, file room, multiple exam rooms, staff room, office and toilet rooms.



Leasing Summary

Address: 3050 Grand Concourse, Bronx, NY - southeast corner of E. 204th Street and Grand Concourse

Size: Approximately 2,000+ SF | Asking Rent: \$50/SF | Condition: Fully built-out / turnkey medical office

Highlights: corner visibility, close transit access, separate rooms, waiting area, reception, lavatories and flexible layout

Furniture and existing build-out may be available, subject to final lease terms and landlord approval.