

# Eagle Plaza

1026 US Bypass 123  
Seneca, South Carolina 29678



## Leasing Contacts

Marrissa Chanin  
678-501-5341  
Marrissa@riverwoodproperties.com

Allie Hodge 678-501-5342  
ahodge@riverwoodproperties.com

[riverwoodproperties.com](http://riverwoodproperties.com)

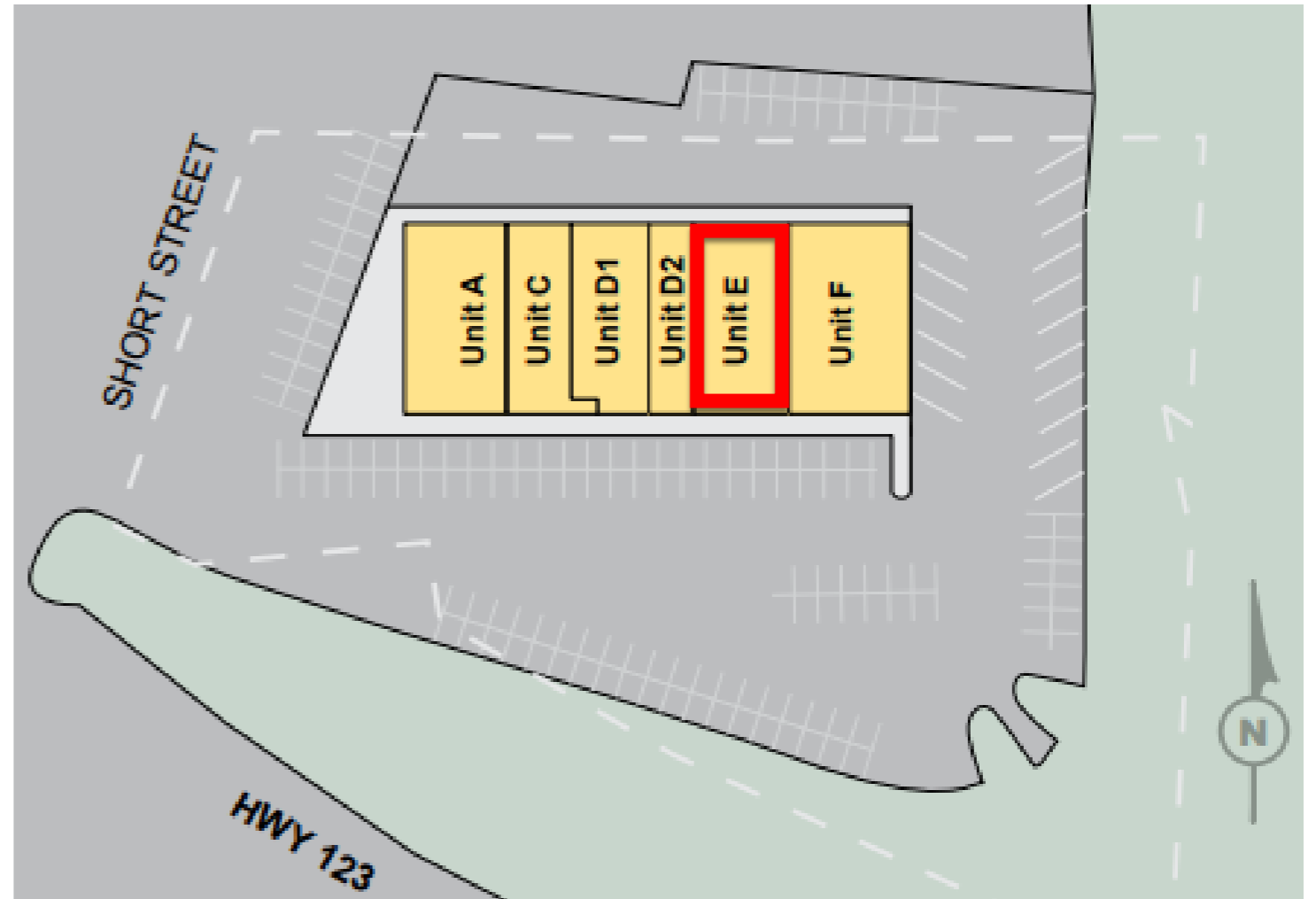
## Property Highlights

- Eagle Plaza is a 10,500 square foot shopping center located in the heart of Seneca just East of Blue Ridge Blvd on Bypass 123.
- It is located in Oconee County with easy access to Lowe's, Walmart, Oconee Memorial Hospital, and the neighboring affluent community of Lake Keowee.
- The site offers excellent visibility to eastbound and westbound traffic on Bypass 123.
- Restaurant space available 2,004SF

**Site Access:** Property is accessible via curb cuts on Bypass 123.

# Eagle Plaza TENANTS

A	Firehouse Subs	2,000
C	AT&T Wireless	1,540
D	State Farm	2,000
E	Restaurant Space Available	2,004
F	JWKY Kitchen	2,572
GLA: 10,116 SF		
Availability:		2,004



## EAGLE PLAZA *Site Plan*



# AREA DEMOGRAPHICS



2022  
Population

1 MILE	3,551
3 MILE	17,572
5 MILE	29,111



2022 Daytime  
Population

1 MILE	1,869
3 MILE	10,203
5 MILE	12,353



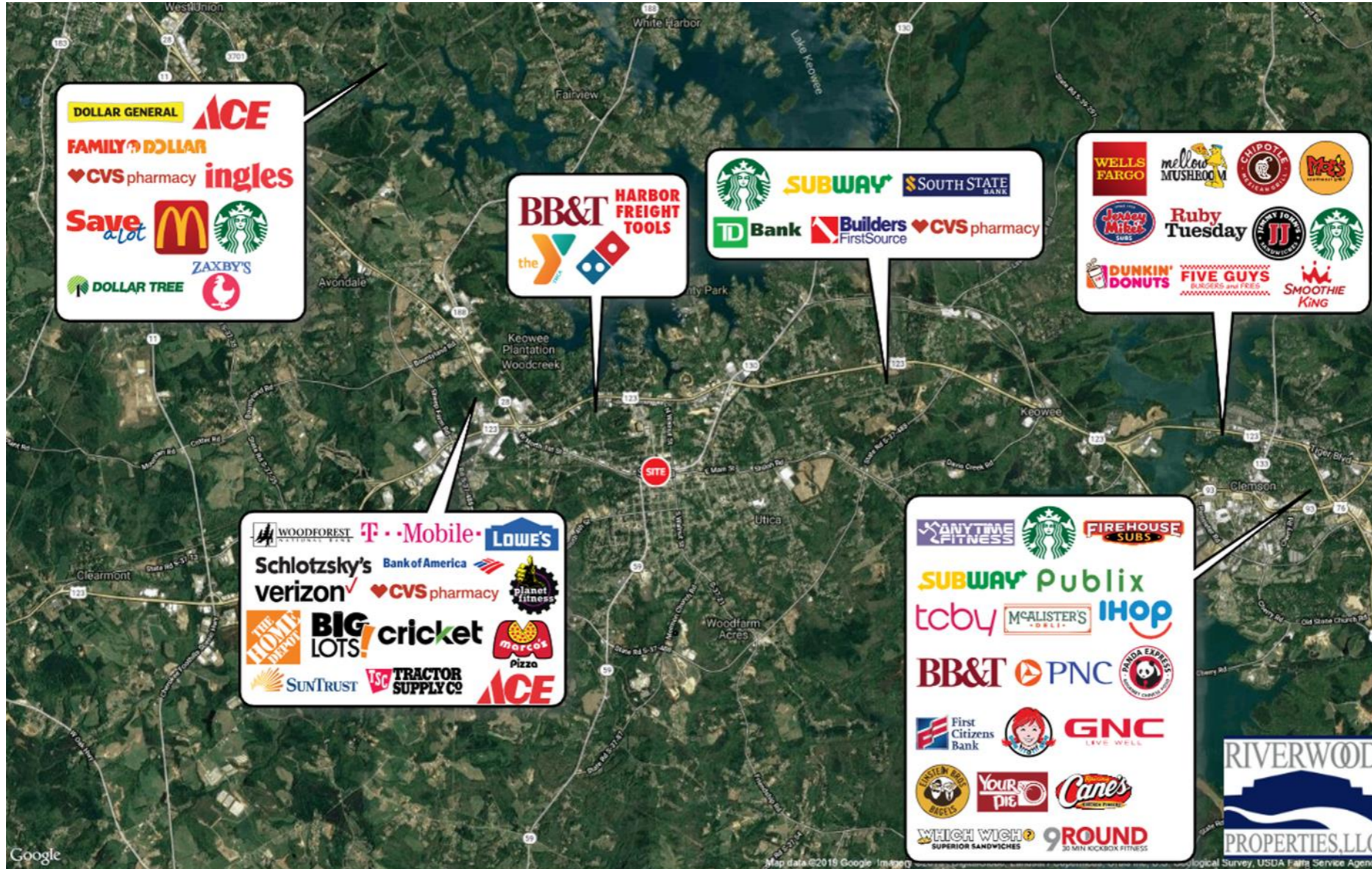
Household 2022

1 MILE	1,552
3 MILE	7,562
5 MILE	12,575



Household  
Income

1 MILE	\$84,146
3 MILE	\$82,955
5 MILE	\$85,165



## EAGLE PLAZA

Trade Area Overview

