

HARBOUR AUTO MALL

6480-6520 W COMMERCIAL BLVD, LAUDERHILL, FL 33319

6520 W COMMERCIAL BLVD



SPACE HIGHLIGHTS

- 3,943 SF
- 892 SF air-conditioned lobby and 2 private rooms
- Ideal for all types of automotive or mechanical use
- Direct frontage and visibility on West Commercial Blvd - excellent exposure to daily traffic
- Dedicated right hand turn into the property
- Building and pylon signage available
- Cross ventilation with 7 grade level overhead doors on both East and West end of the unit measuring 10' x 12' with one measuring 10' x 10'
- C-3 Zoning



HALEY PRESSER

Property Manager / Sales Associate
Direct: 954.485.9200 | Cell: 954.254.5396
Haley@levyrai.com

ANGIE WEAVER

Lauderdale Lakes and Lauderhill Manager
Direct: 954.485.9200 | Cell: 917.645.2339
angie@levyrai.com

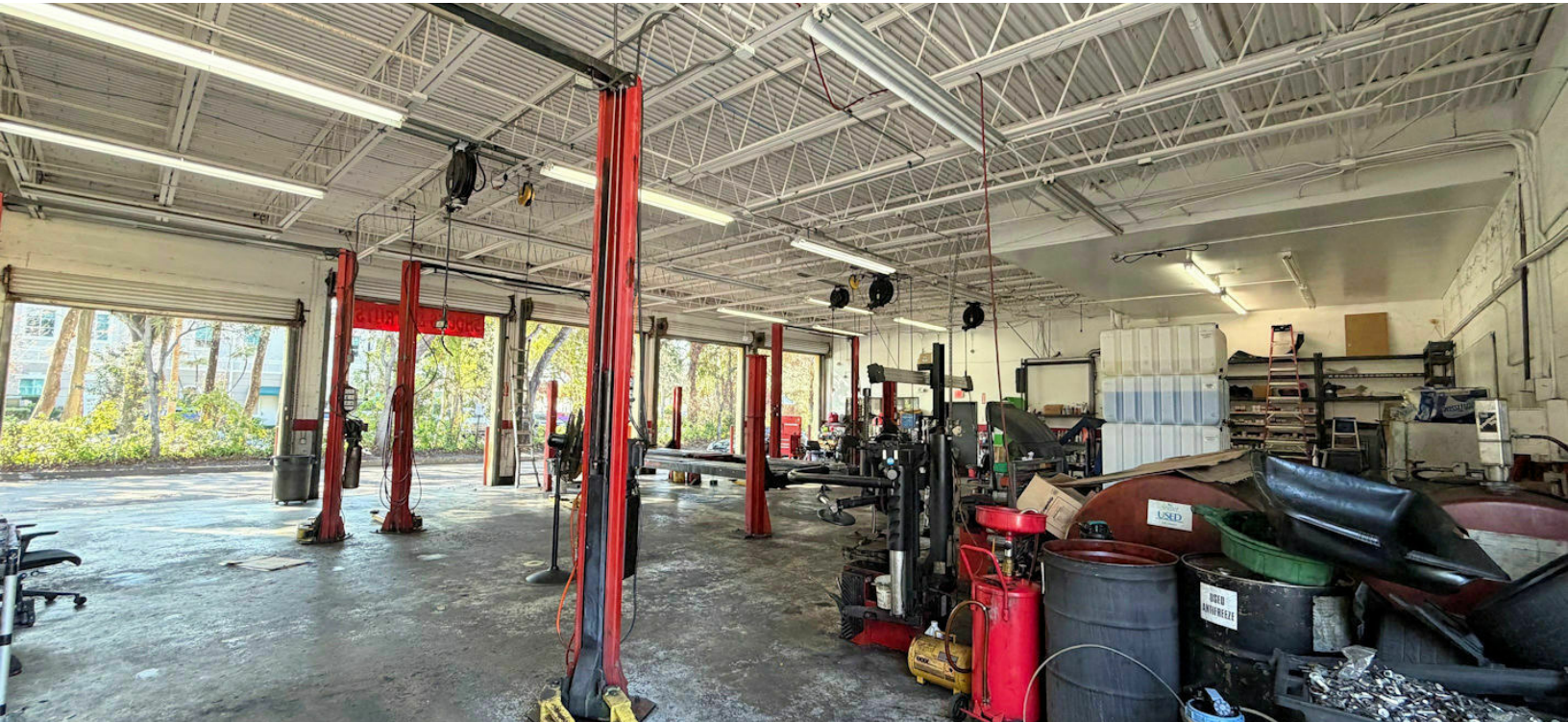


FOR LEASE

HARBOUR AUTO MALL

6480-6520 W COMMERCIAL BLVD, LAUDERHILL, FL 33319

CUSTOM PAGE



HALEY PRESSER

Property Manager / Sales Associate
Direct: 954.485.9200 | Cell: 954.254.5396
Haley@levyrai.com

ANGIE WEAVER

Lauderdale Lakes and Lauderdale Manager
Direct: 954.485.9200 | Cell: 917.645.2339
angie@levyrai.com



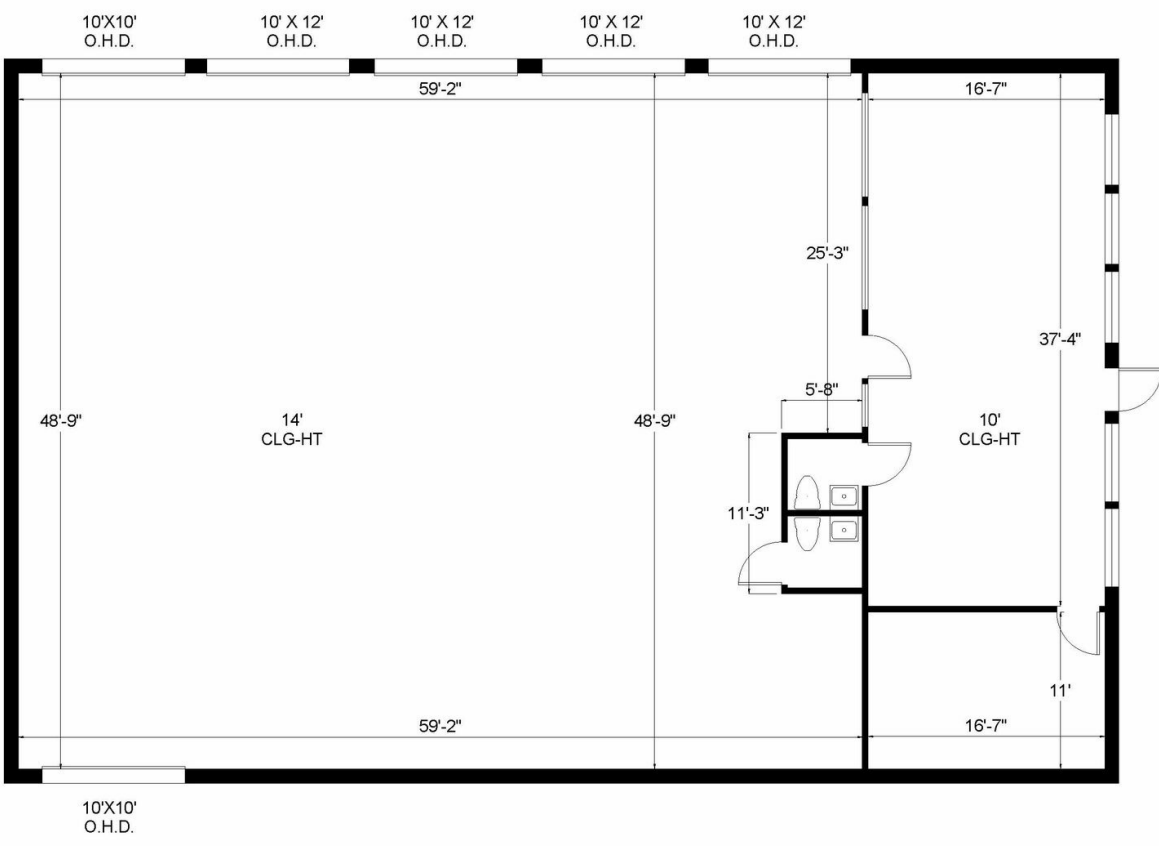
HARBOUR AUTO MALL

6480-6520 W COMMERCIAL BLVD, LAUDERHILL, FL 33319

6520 W COMMERCIAL BLVD FLOOR PLAN

HARBOUR AUTO MALL

6520 W Comercial Blvd | Lauderhill, FL 33319



Office - 892 Sq. Ft.
Warehouse - 3,051 Sq. Ft.

3,943 Rentable Sq. Ft.
www.LevyRealtyAdvisors.com

HALEY PRESSER
Property Manager / Sales Associate
Direct: 954.485.9200 | Cell: 954.254.5396
Haley@levyrai.com

ANGIE WEAVER
Lauderdale Lakes and Lauderhill Manager
Direct: 954.485.9200 | Cell: 917.645.2339
angie@levyrai.com

