

524 S. Vermont Ave.
Glendora, CA
10 Unit 13,000sf
Multi Tenant Industrial



TVM COMMERCIAL REALTY GROUP INC FRANK 626 852 4221 frank@tvmcrg.com

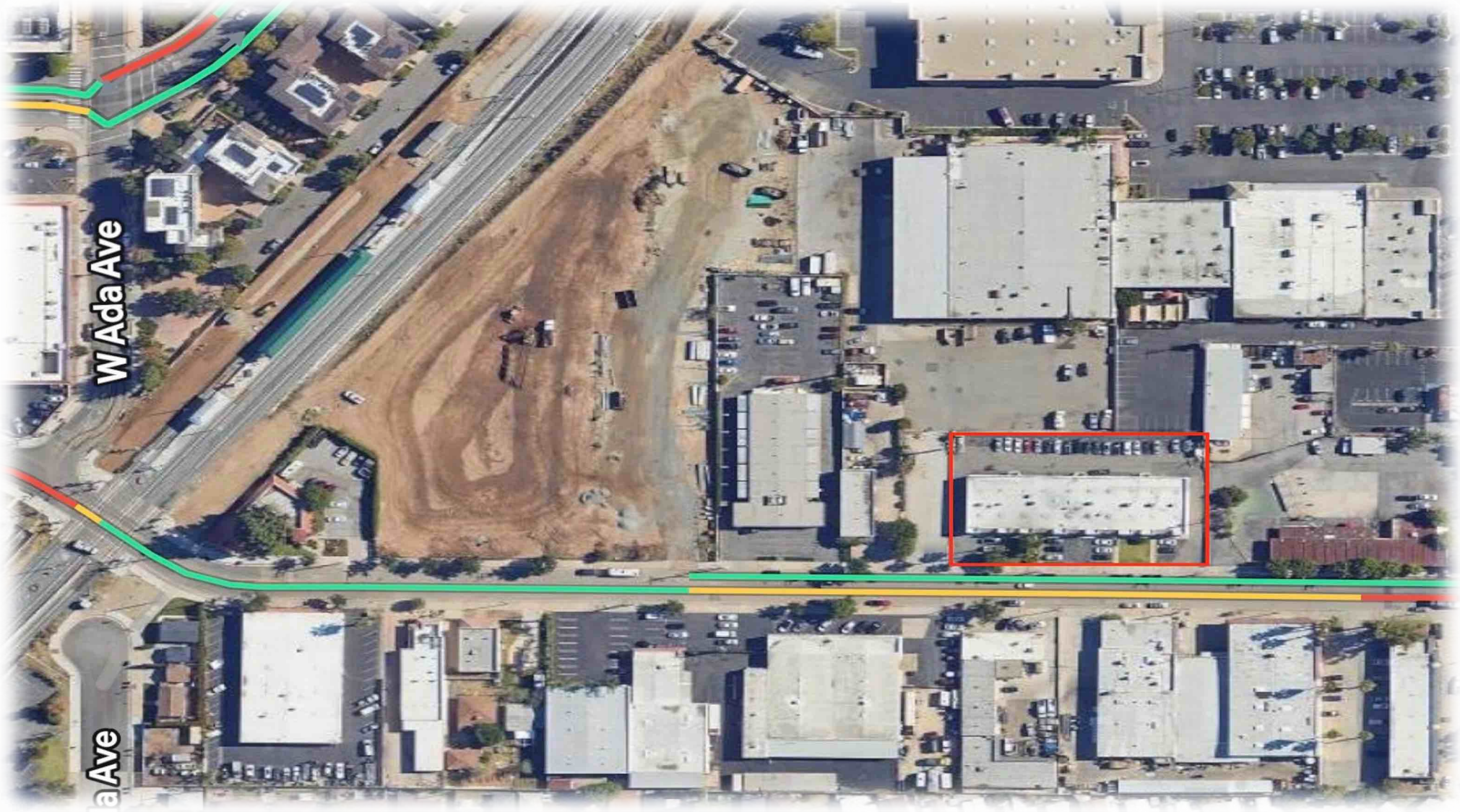
all information is from sources deemed reliable but not guaranteed

Rear Parking and Yard Space



TVM COMMERCIAL REALTY GROUP INC FRANK 626 852 4221 frank@tvmcrg.com

all information is from sources deemed reliable but not guaranteed



TVM COMMERCIAL REALTY GROUP INC FRANK 626 852 4221 frank@tvmcrg.com

all information is from sources deemed reliable but not guaranteed

Property Features

TVM Commercial Realty Group is proud to offer this Multi-Tenant Light Industrial Building, located in Glendora, California

This Property Features:

- **13,000 sf 10 Units – Currently Owner Occupied**
- **All Units have Street Frontage**
- **10 – Ground Level Loading Doors**
- **TCMU Flexible Zoning Allows Light Industrial and Multi Family Residential**
- **Owner will Leaseback up to 2 Years Rate Negotiable**
- **Cell Tower Lease Payments \$**
- **Within 500' (apx) of Metrolink Station**
- **Year Built: 1978**
- **Lot Size: 35,664 sf .8187 Acres**

OFFERING PRICE : Negotiable

TVM COMMERCIAL REALTY GROUP INC FRANK 626 852 4221 frank@tvmcrg.com

all information is from sources deemed reliable but not guaranteed