

# FOR LEASE



## 444 STILLWATER AVE, BANGOR, ME

**PROPERTY DESCRIPTION** Highly visible, flexible office space with ample windows & natural light. Conveniently located on Stillwater Avenue with access to the property via a lit intersection.

**LOCATION** Less than ¼ of a mile from the I-95 interchange and Bangor's Stillwater shopping district.

**BUILDING SIZE** 14,000 +/- sf

**SPACE AVAILABLE** 2<sup>nd</sup> Floor: 2,718 +/- sf (sub-dividable)

**TENANTS** Northeast Occupational Exchange, Cline Chiropractic, Living Innovations, Lifeworks of Maine, Visiting Angels, Serenity Residential Care

**ELEVATOR** Serves 1<sup>st</sup> & 2<sup>nd</sup> floor

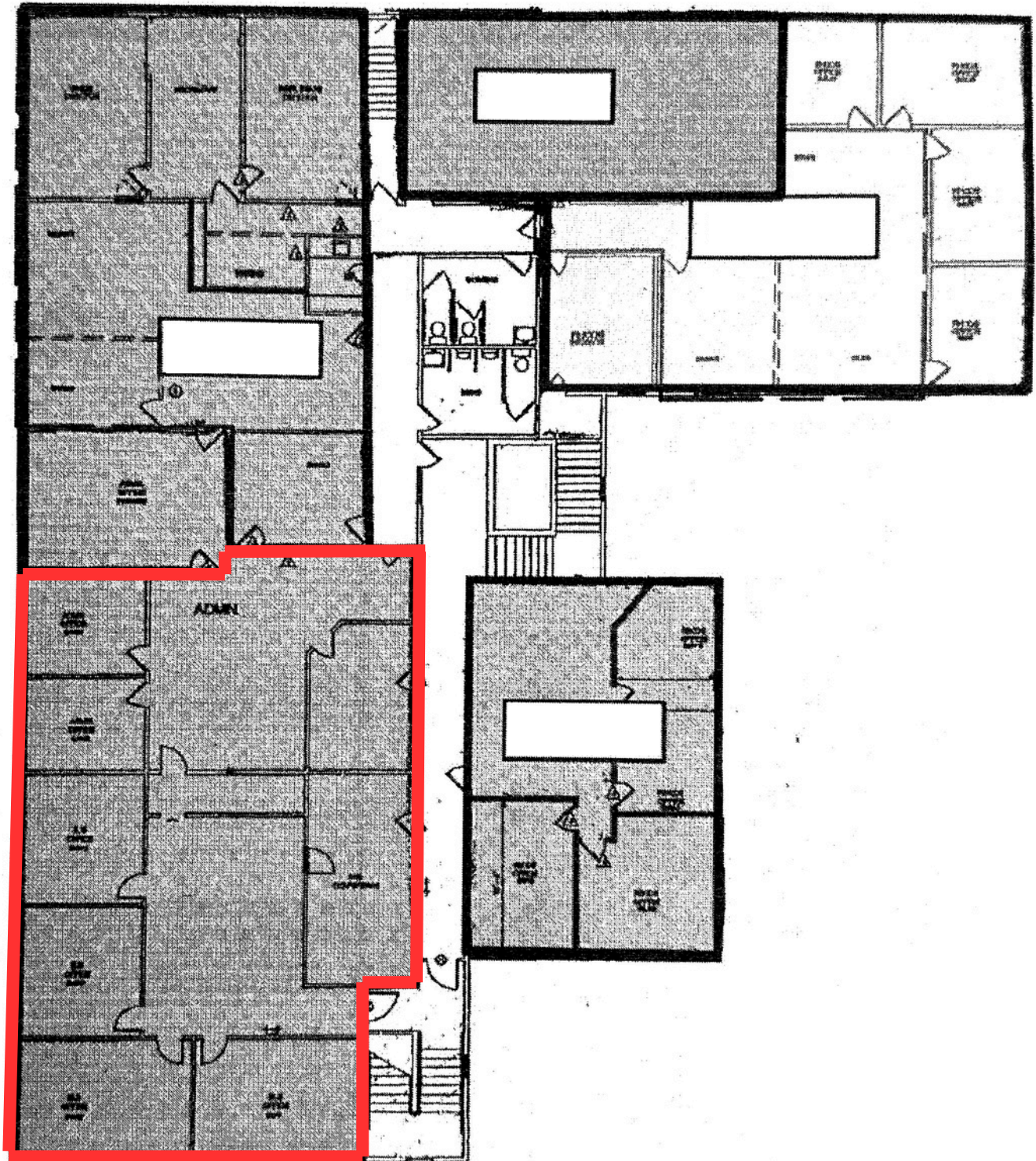
**PARKING** Ample on-site parking

**ZONING** S&PS (Shopping & Personal Service)

**LEASE PRICE** \$13.25/sf plus \$1.50/sf for electric

Information furnished is from sources deemed reliable, but no warranty is made to the accuracy thereof. The listing broker hereby discloses that she/he is acting solely as an agent for the seller in the marketing, negotiation, and sale/lease of this property. Broker further discloses that she/he represents the seller's interest and has a fiduciary duty to disclose to the seller information which is material to the sale acquired from the buyer or any other source.

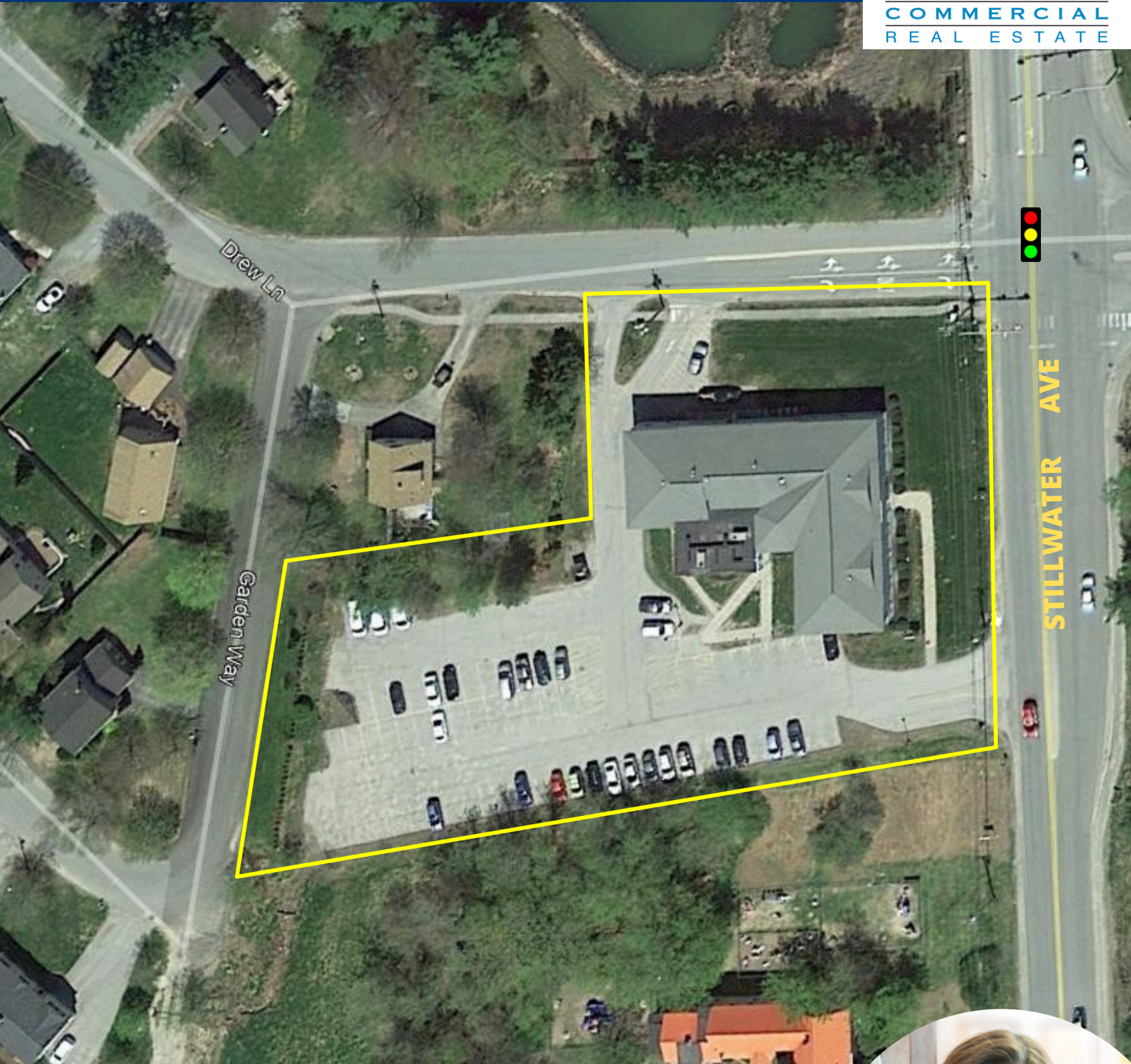
**SPACE AVAILABLE**



**2,718 +/- sf (sub-dividable)**

\*DRAWING IS NOT TO SCALE

**AERIAL**



**FOR FURTHER INFO, CONTACT: MOLLY BRIGGS**

 [molly@epsteincommercial.com](mailto:molly@epsteincommercial.com)

 [epsteincommercial.com](http://epsteincommercial.com)

 207-945-6222

