



SALT LAKE CITY OFFICE SUITE FOR LEASE

747 EAST SOUTH TEMPLE, SALT LAKE CITY 84102

**RECENTLY REMODELED - MOVE-IN READY!
RATE REDUCTION! FREE RENT AVAILABLE!**



Property Information

- Suite 202: 2,500 RSF Second Level Office
- Recently Remodeled - Move-In Ready
- Central Business District Periphery
- Private Entrance
- 4/1,000 SF Parking Ratio (40 Covered Parking Stalls)
- Less Than Ten Minutes to I-15
- Minutes to City Creek Mall and Trax
- Close Proximity to University of Utah and Salt Lake International Airport

Demographics

	1 Mile	3 Mile	5 Mile
Population	31,129	122,439	233,911
Households	17,169	57,872	99,819
Avg. Household Income	\$82,545	\$89,781	\$92,131

Traffic Counts

South Temple: 23,508 Annual Average Daily Traffic
 700 East: 27,395 Annual Average Daily Traffic

LEASE RATE REDUCED: \$8.00/SF YEAR NNN | FREE RENT AVAILABLE!

CONTACT
801.617.1700

JOHN GUBLER
jhgubler@yahoo.com

WEST HARADIN
west.haradin@crcnationwide.com

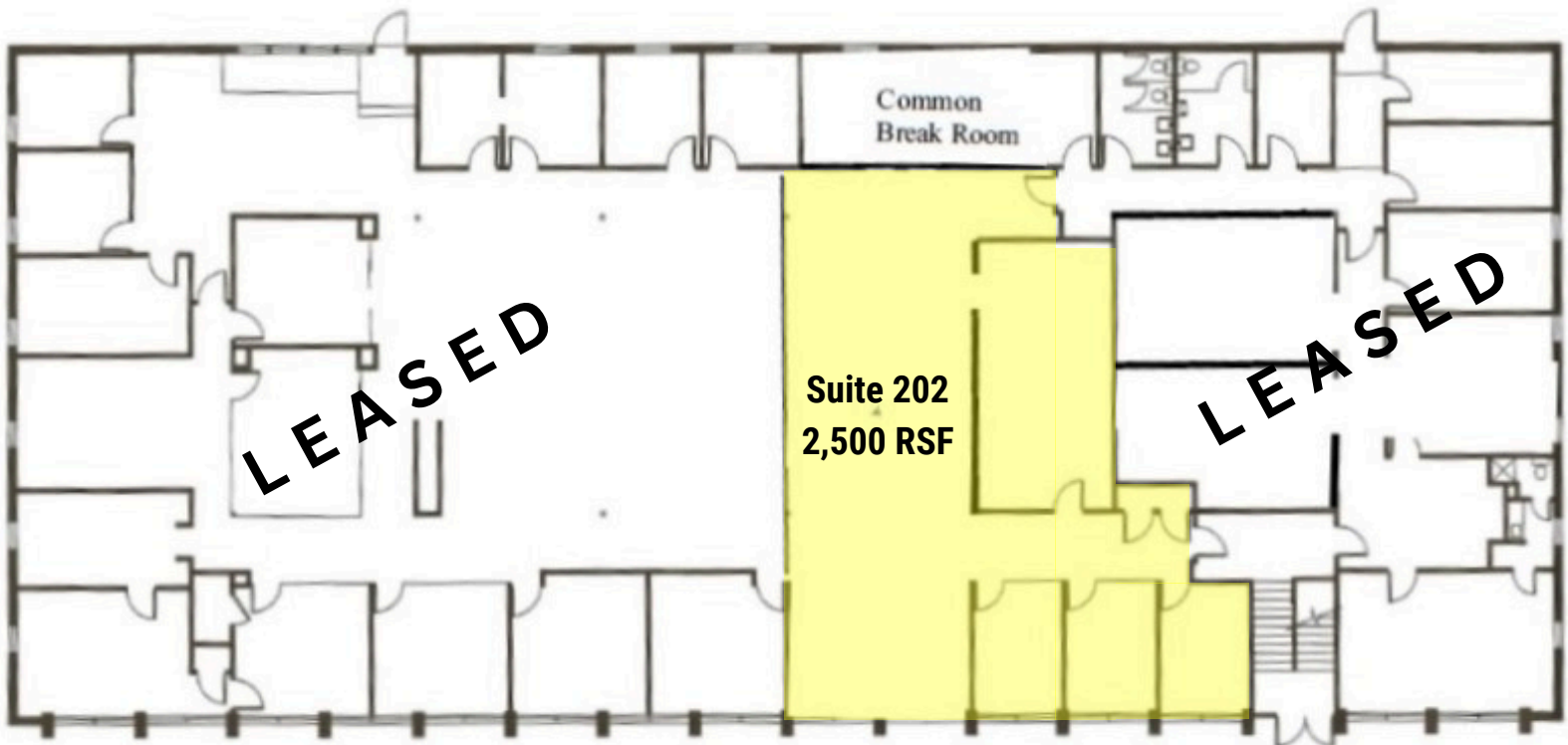


SALT LAKE CITY OFFICE SUITE FOR LEASE

747 EAST SOUTH TEMPLE, SALT LAKE CITY 84102



SECOND LEVEL FLOORPLAN



This information is given with the understanding that all negotiations and/or real estate activity related to the property described above shall be conducted through this cRc Nationwide office. The above information while not guaranteed, was obtained from sources we believe to be reliable.

CONTACT
801.617.1700

JOHN GUBLER
jhgubler@yahoo.com

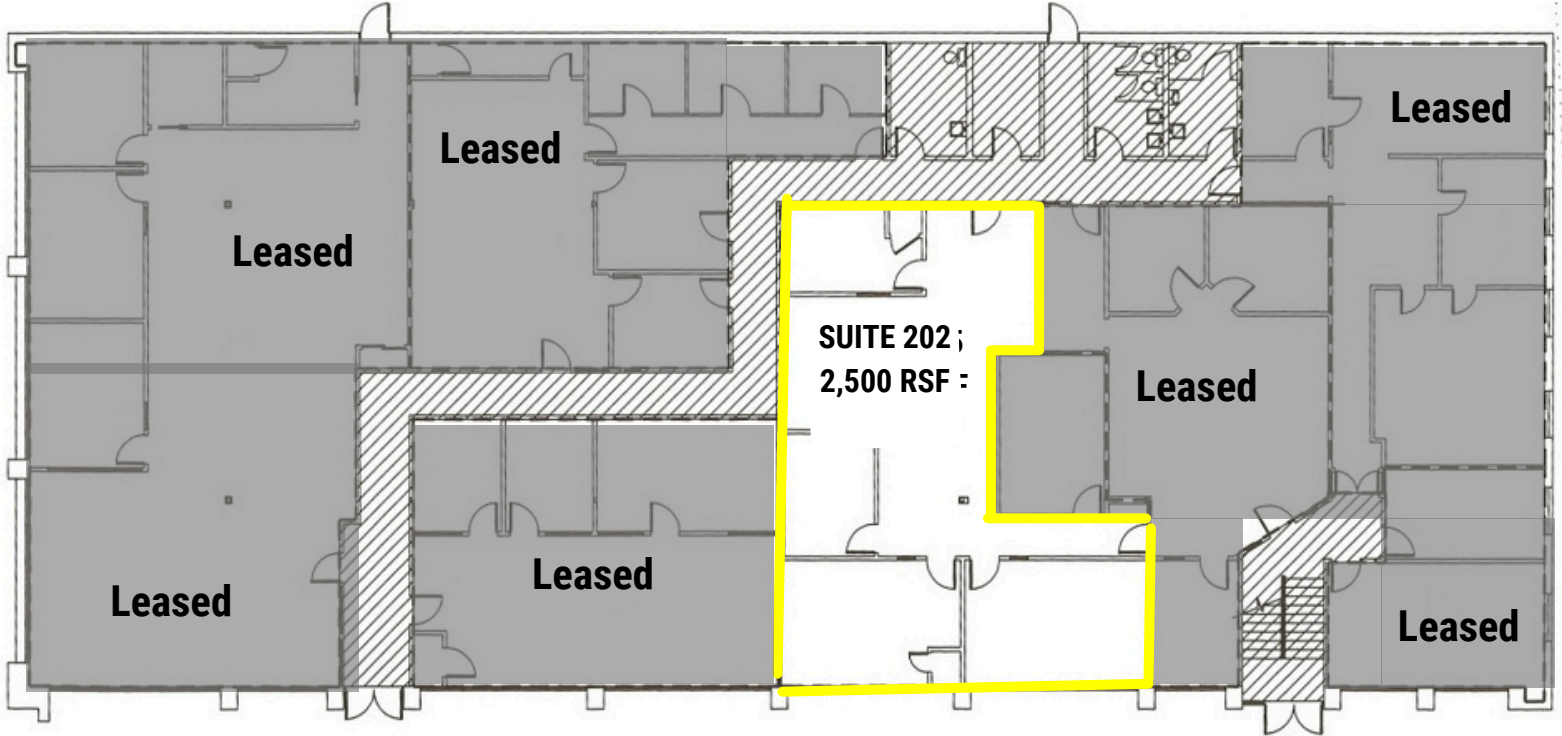
WEST HARADIN
west.haradin@crcnationwide.com



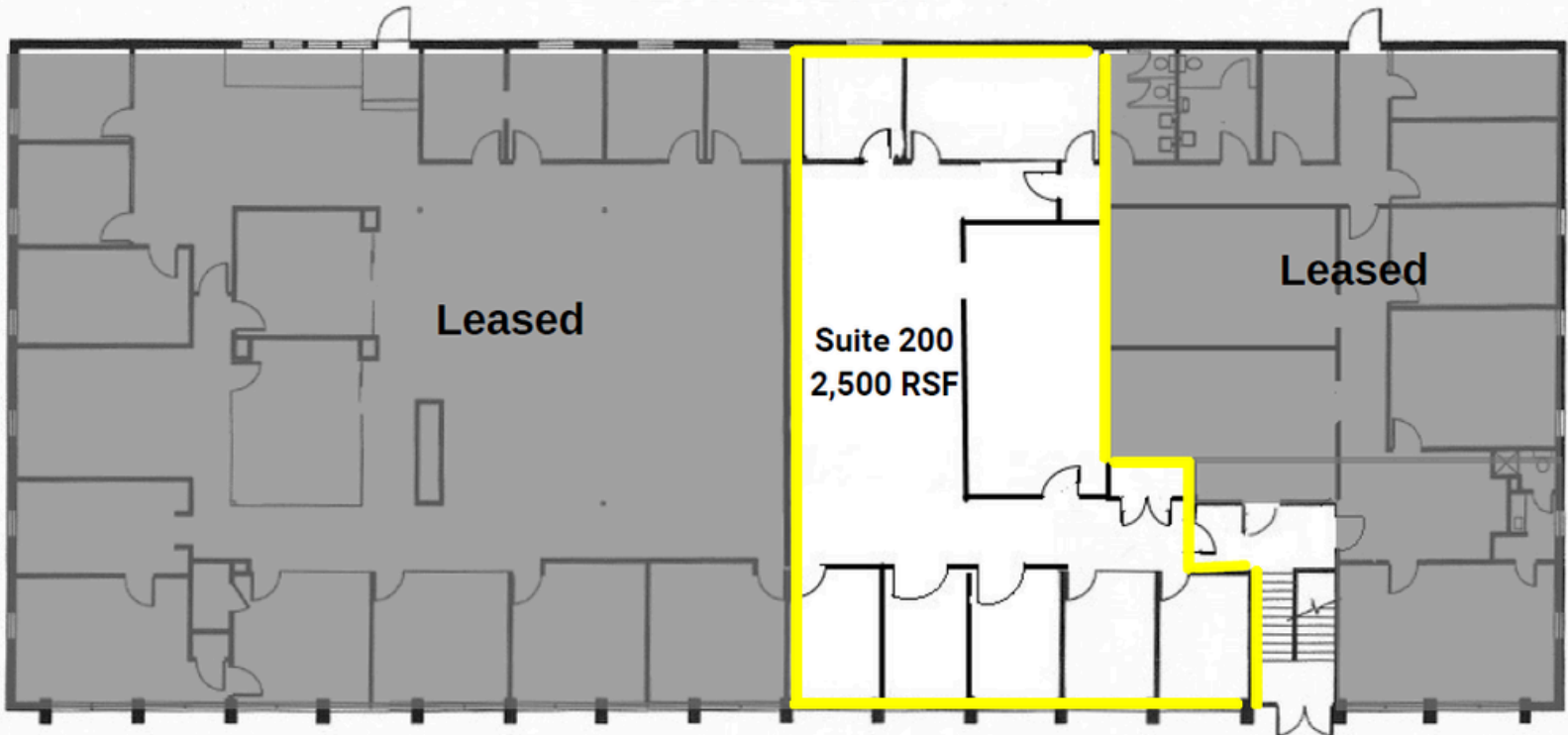
SALT LAKE CITY OFFICE SUITE FOR LEASE

747 EAST SOUTH TEMPLE, SALT LAKE CITY 84102

FIRST FLOOR



SECOND FLOOR



CONTACT

801.617.1700

JOHN GUBLER

jhgubler@yahoo.com

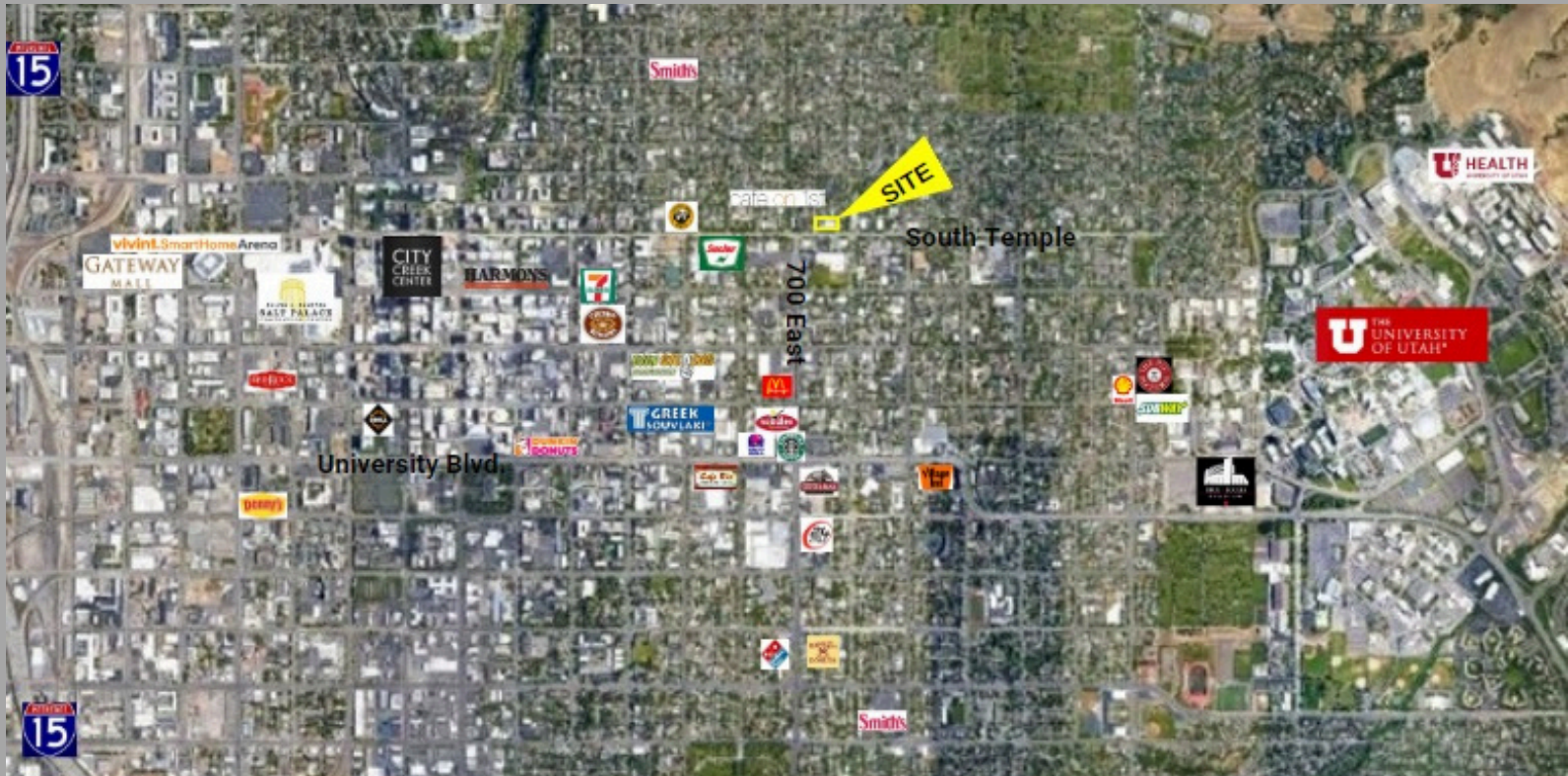
WEST HARADIN

west.haradin@crcnationwide.com



SALT LAKE CITY OFFICE SUITE FOR LEASE

747 EAST SOUTH TEMPLE, SALT LAKE CITY 84102



This information is given with the understanding that all negotiations and/or real estate activity related to the property described above shall be conducted through this cRc Nationwide office. The above information while not guaranteed, was obtained from sources we believe to be reliable.

CONTACT
801.617.1700

JOHN GUBLER
jhgubler@yahoo.com

WEST HARADIN
west.haradin@crcnationwide.com