



# For Sale

**Tami Walker**  
+1 208 420 4601  
tami.walker@colliers.com

**Jerrika Gonzalez**  
+1 208 420 3189  
jerrika.gonzalez@colliers.com

---

205 Shoshone Street N, Suite 201  
Twin Falls, Idaho 83301  
+1 208 910 2006  
colliers.com/idaho

## 119 Country Lane Jerome, Idaho

### Highlights:

- Medical/professional use
- Owner-user investment property
- Dental and labratory set up
- X-ray imaging ready
- Waiting room

This document has been prepared by Colliers for advertising and general information only. Colliers makes no guarantees, representations or warranties of any kind, expressed or implied, regarding the information including, but not limited to, warranties of content, accuracy and reliability. Any interested party should undertake their own inquiries as to the accuracy of the information. Colliers excludes unequivocally all inferred or implied terms, conditions and warranties arising out of this document and excludes all liability for loss and damages arising there from. This publication is the copyrighted property of Colliers and /or its licensor(s). © 2026. All rights reserved. This communication is not intended to cause or induce breach of an existing listing agreement. Colliers Magic Valley, LLC.

# FOR SALE

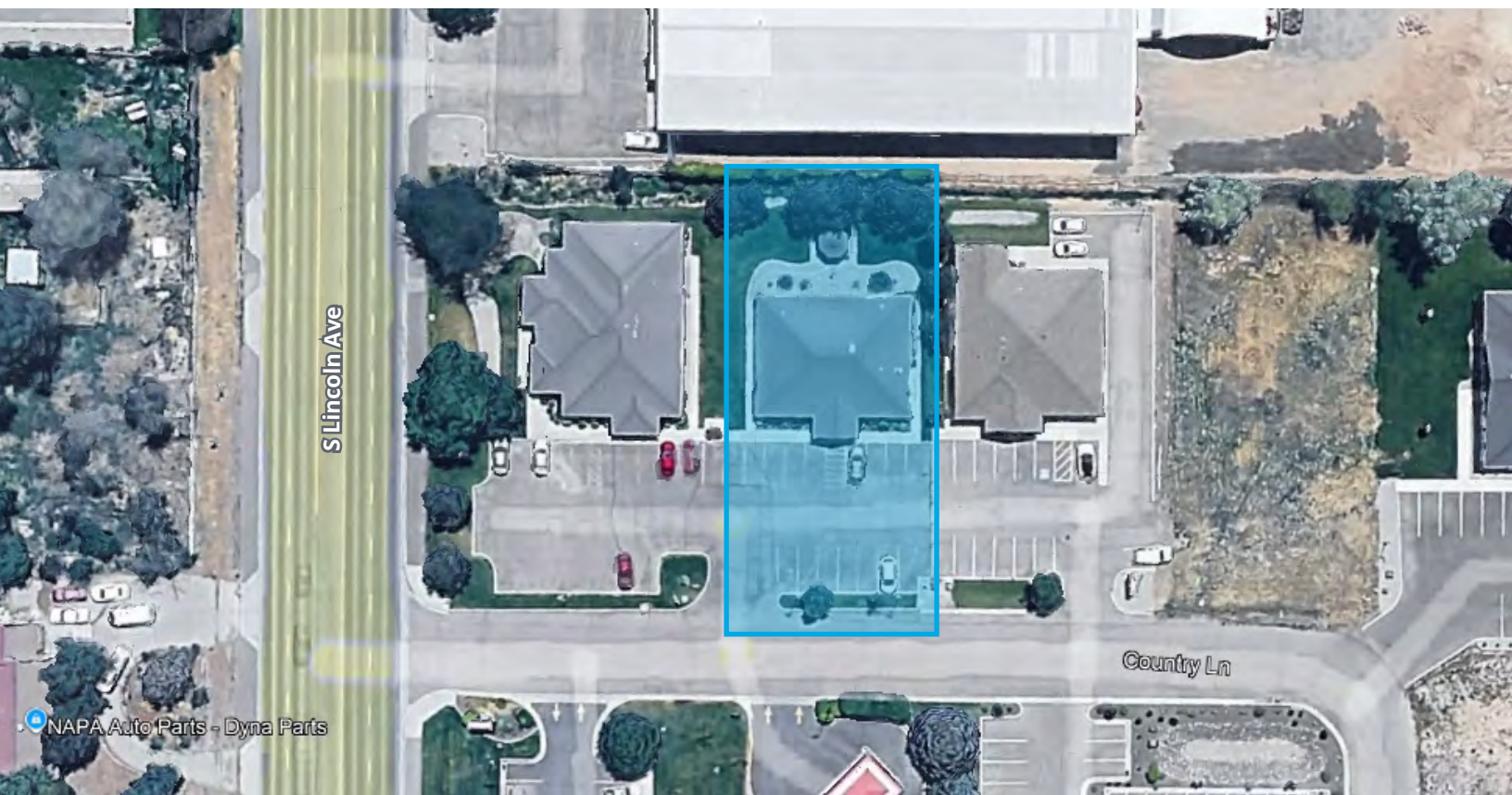
## Property Information

Property Type	Office
Total Building Size	3,500 SF
Land Size	0.5 Acres

Sale Price **\$630,000**

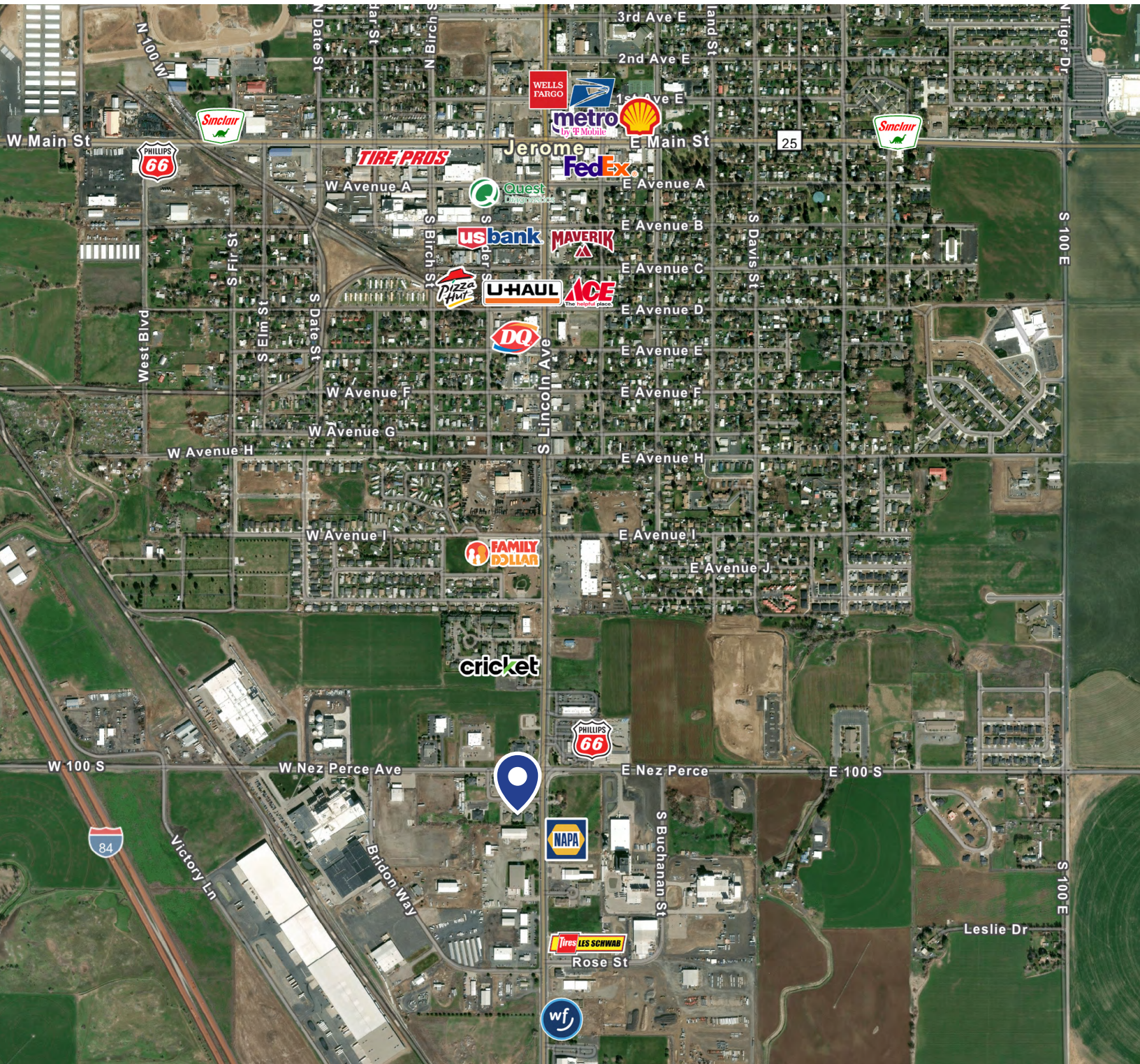
## Demographics

	1 Mile	3 Miles	5 Miles
Population	4,489	15,440	19,748
Households	1,526	5,123	6,586
Avg. Household Income	\$86,712	\$83,015	\$87,918



# Property Gallery





205 Shoshone Street N, Suite 201  
Twin Falls, Idaho 83301  
+1 208 910 2006  
colliers.com/idaho

**Tami Walker**  
+1 208 420 4601  
tami.walker@colliers.com

**Jerrika Gonzalez**  
+1 208 420 3189  
jerrika.gonzalez@colliers.com