



## 167 S. High Street

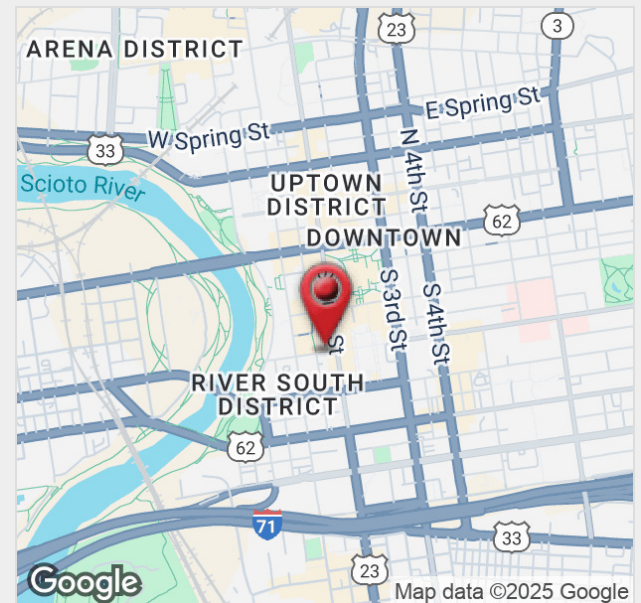
Columbus, Ohio 43215

### Property Features

- Well-Known Historical Columbus Landmark
- Investment Opportunity for Adaptive Re-Use
- \$1.455M Ohio Preservation Historic Tax Credits
- \$2.0M Federal HTC (20% of Qualified Rehabilitation Expenditures)
- Neoclassical Greek Revival Architecture Designed by Richards, McCarty & Bulford
- Brick Construction With a Stone Façade
- 32,104 SF Four-Story Building
- Two Passenger Elevators
- Built in 1911 | Renovated in 1955
- Situated on a 0.27 Acre Corner Lot
- Zoned Downtown District (DD)
- Can be Purchased with 171-191 S. High St. & 200 S. Wall St.

**Sale Price: \$2,850,000**

[www.HighandTown.com](http://www.HighandTown.com)



For more information:

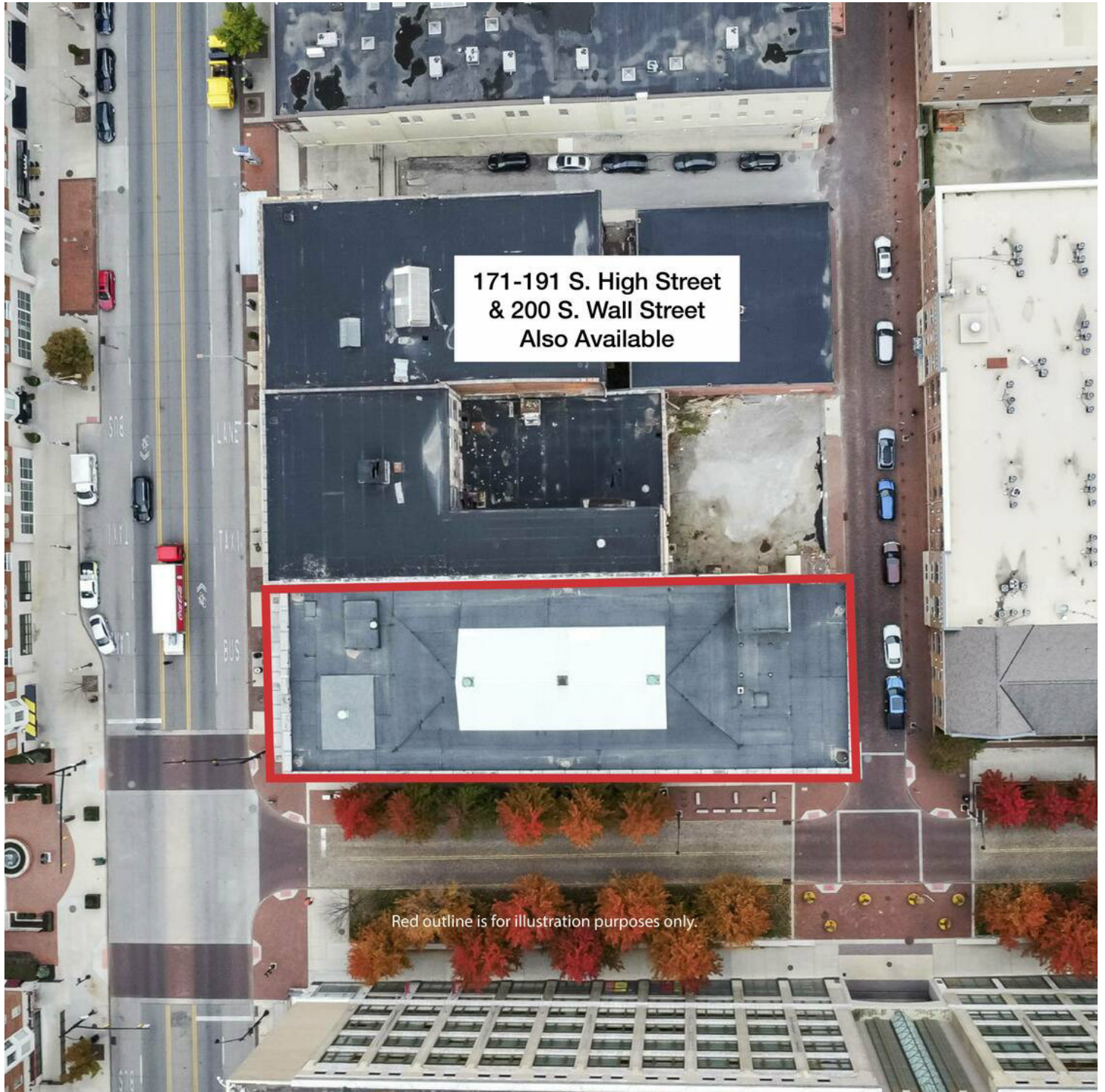
**Peter Merkle**

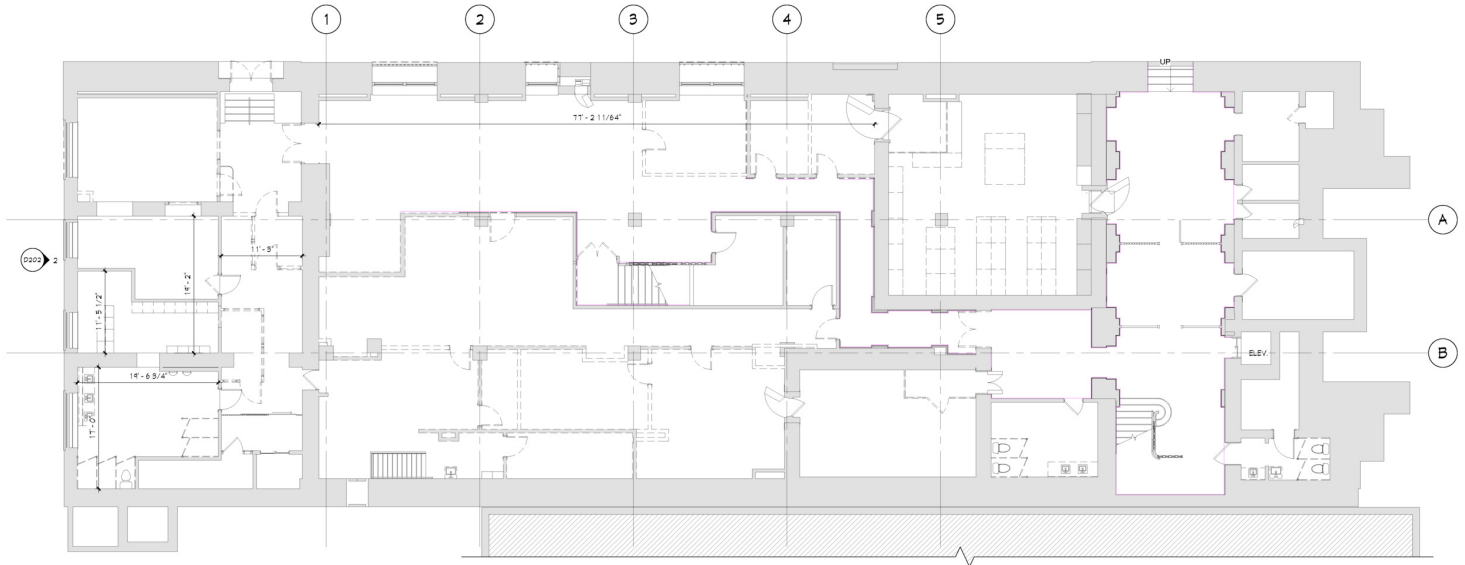
614 629 5240 • [pmerkle@ohioequities.com](mailto:pmerkle@ohioequities.com)

**Matt Gregory, SIOR, CCIM**

614 629 5234 • [mgregory@ohioequities.com](mailto:mgregory@ohioequities.com)

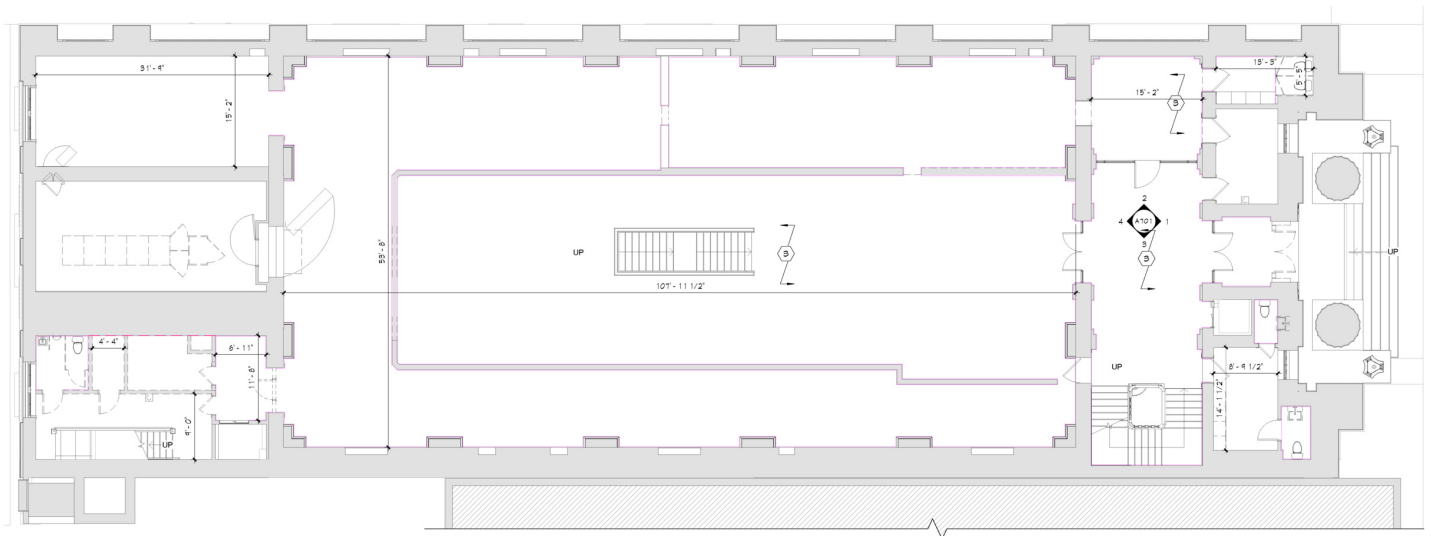






historic basement plan

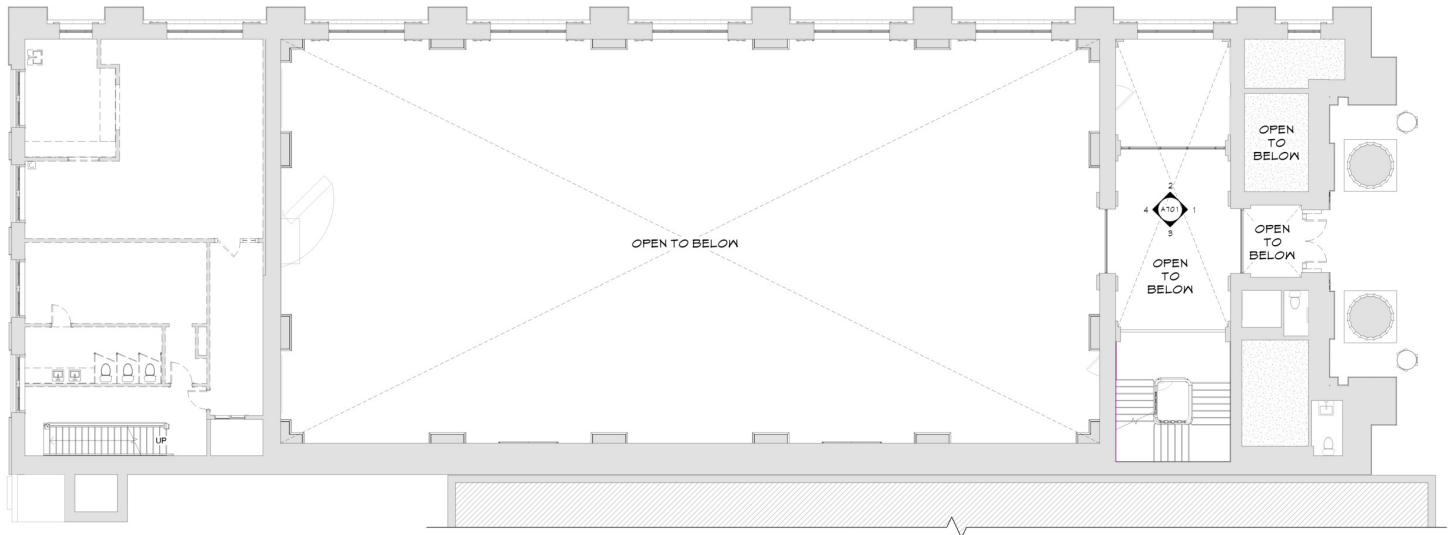
1/8" = 1'-0"



historic first floor plan

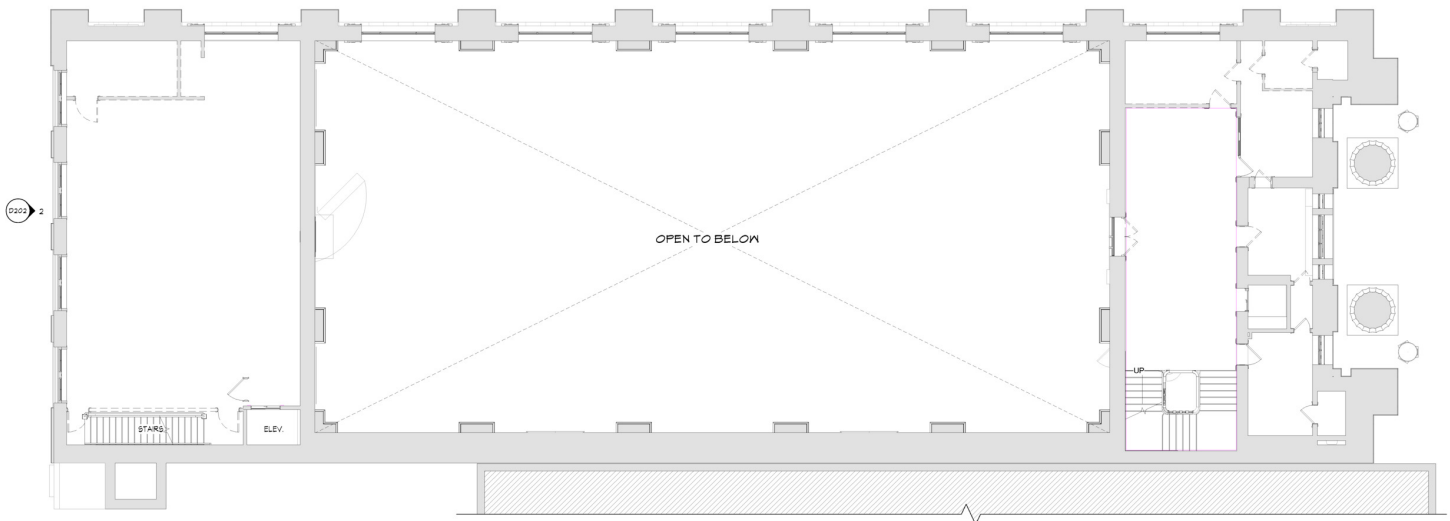
1/8" = 1'-0"





historic second floor plan

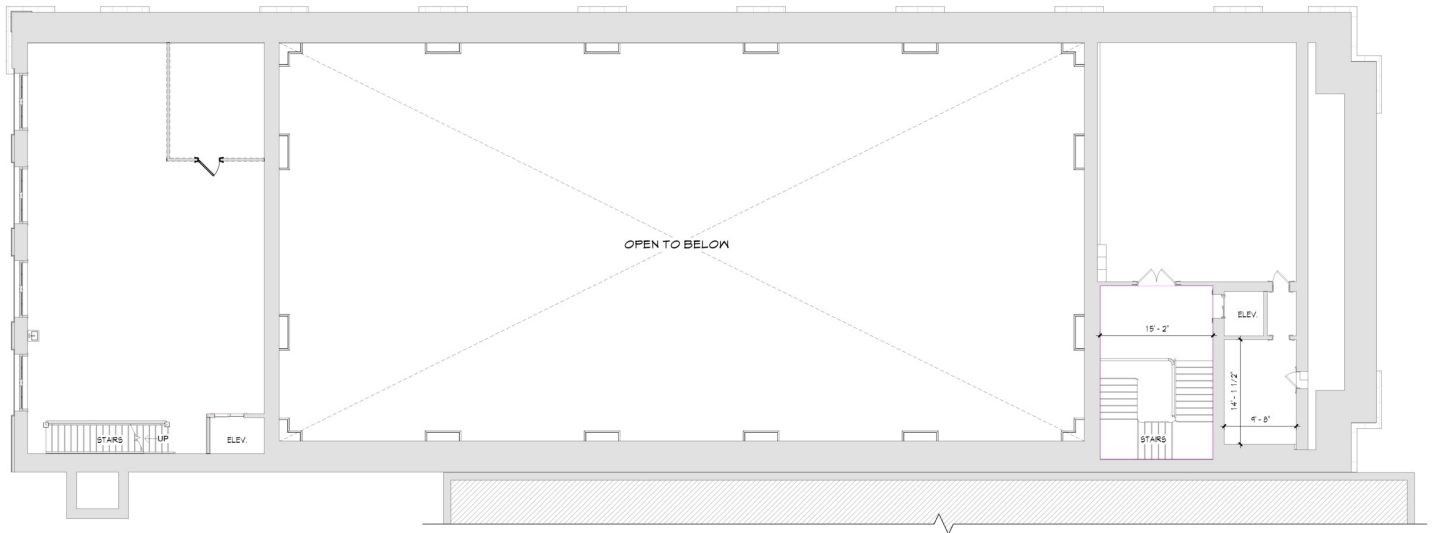
1/8" = 1'-0"

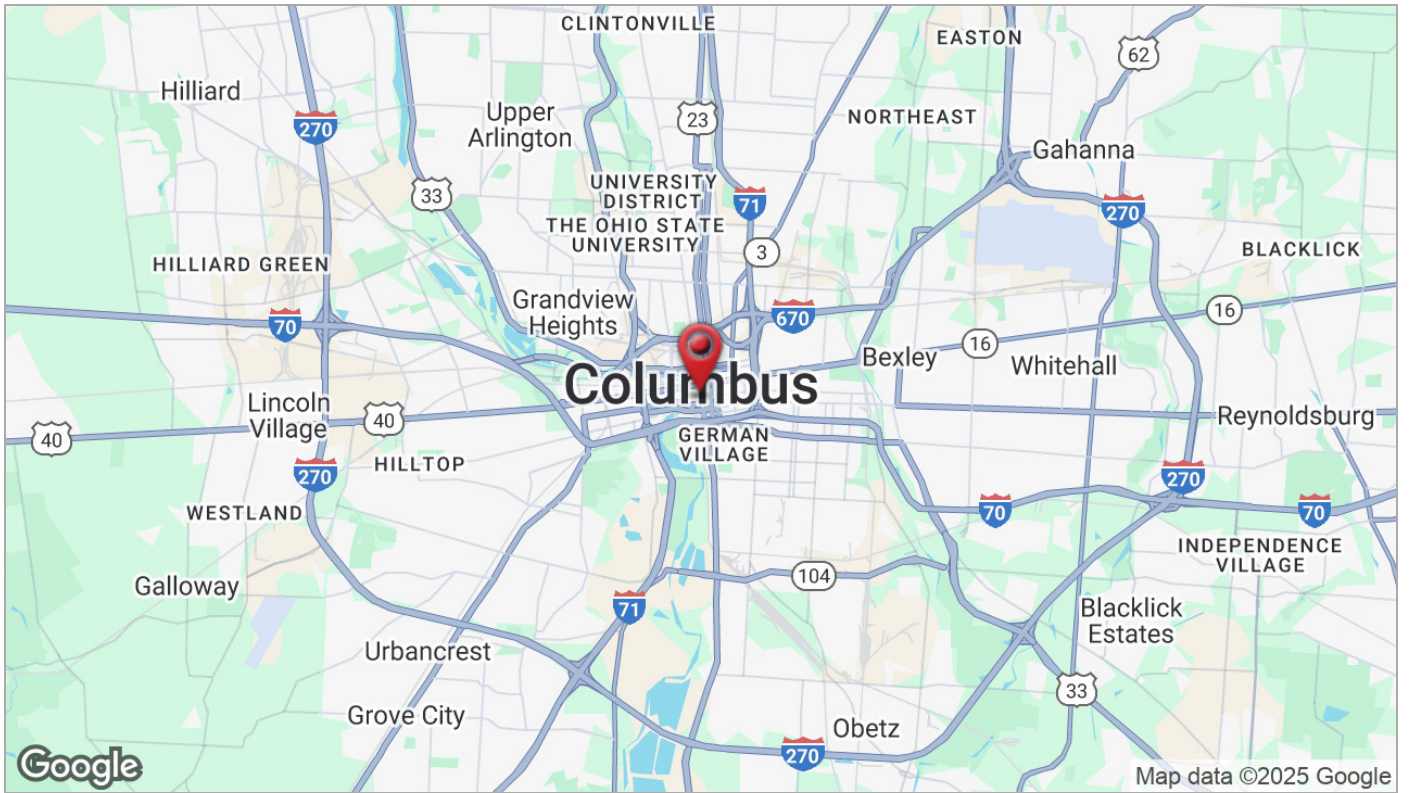
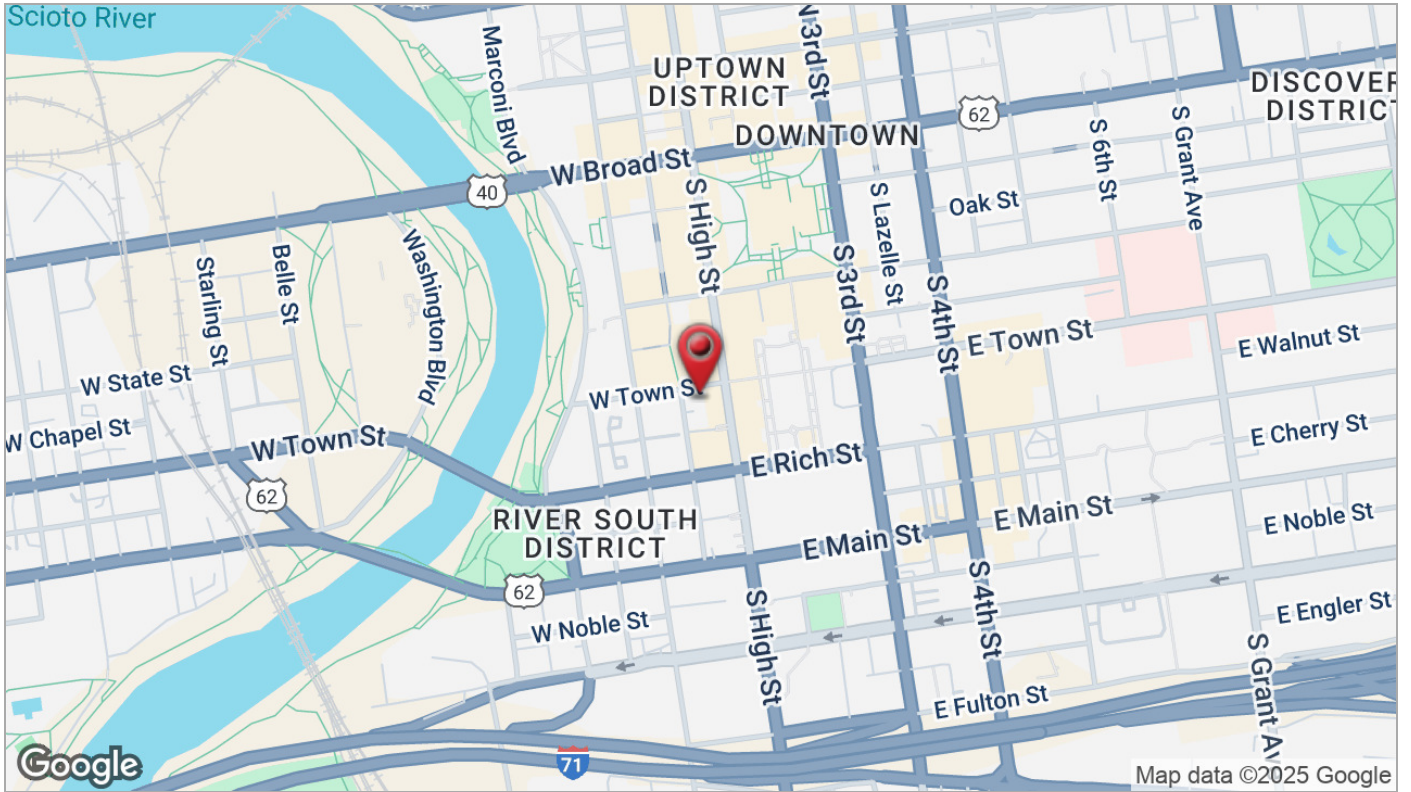


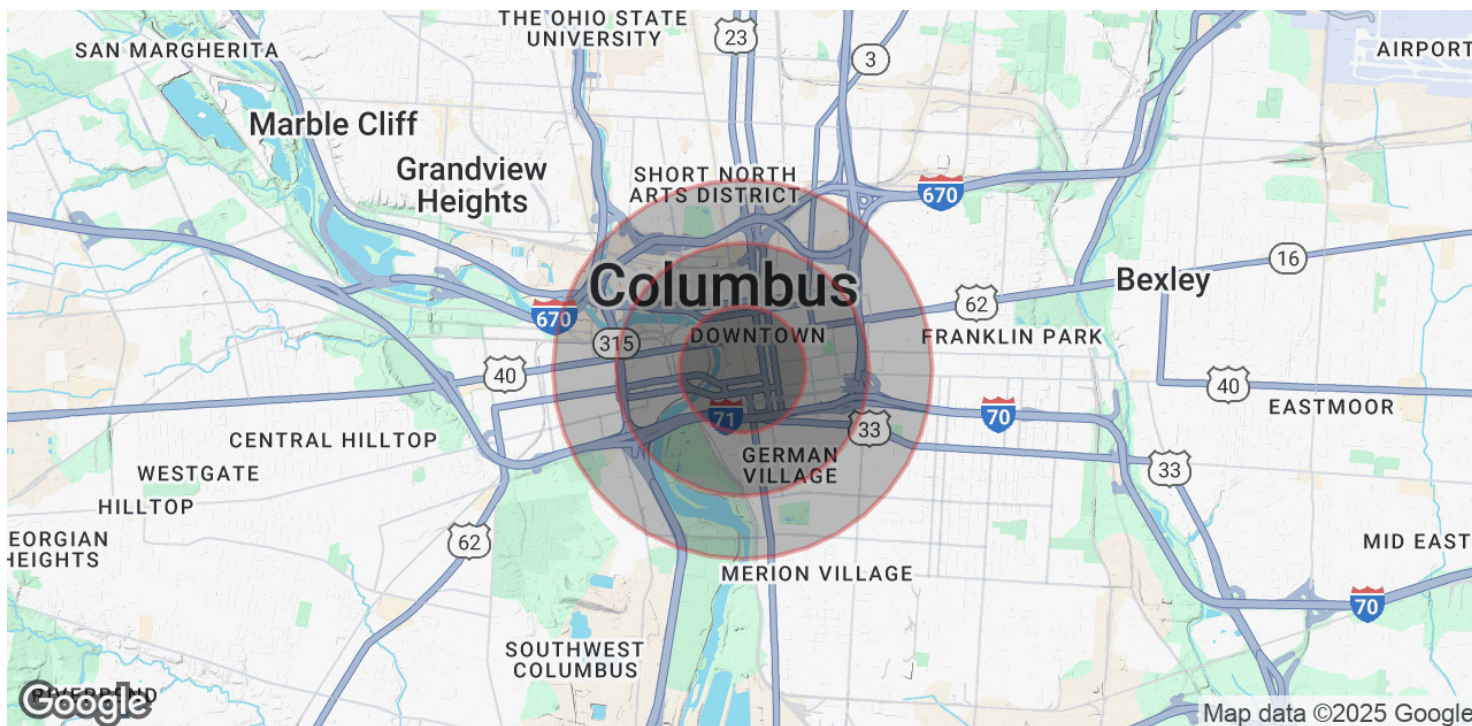
historic 3rd floor plan

1/8" = 1'-0"









POPULATION	0.5 MILES	1 MILE	1.5 MILES
Total Population	5,875	16,430	35,218
Average Age	41	40	38
Average Age (Male)	41	40	39
Average Age (Female)	41	39	38
HOUSEHOLDS & INCOME	0.5 MILES	1 MILE	1.5 MILES
Total Households	3,754	10,592	20,780
# of Persons per HH	1.6	1.6	1.7
Average HH Income	\$102,843	\$98,716	\$100,067
Average House Value	\$827,478	\$633,091	\$563,335

Demographics data derived from AlphaMap