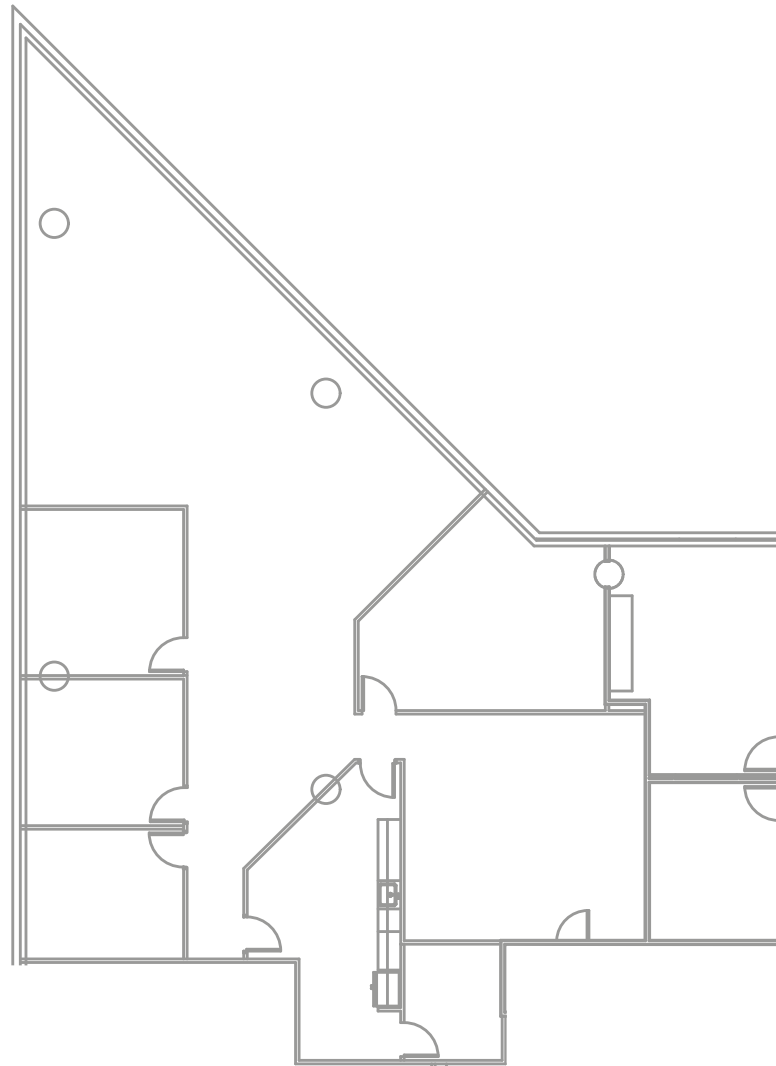


5|7|1|8

WESTHEIMER

Suite 1850

3,643 SF



**PARKER BURKETT**

📞 713.407.8716

✉️ [Parker.Burkett@transwestern.com](mailto:Parker.Burkett@transwestern.com)

**KATY GRAGG**

📞 713.407.8709

✉️ [Katy.Gragg@transwestern.com](mailto:Katy.Gragg@transwestern.com)

