

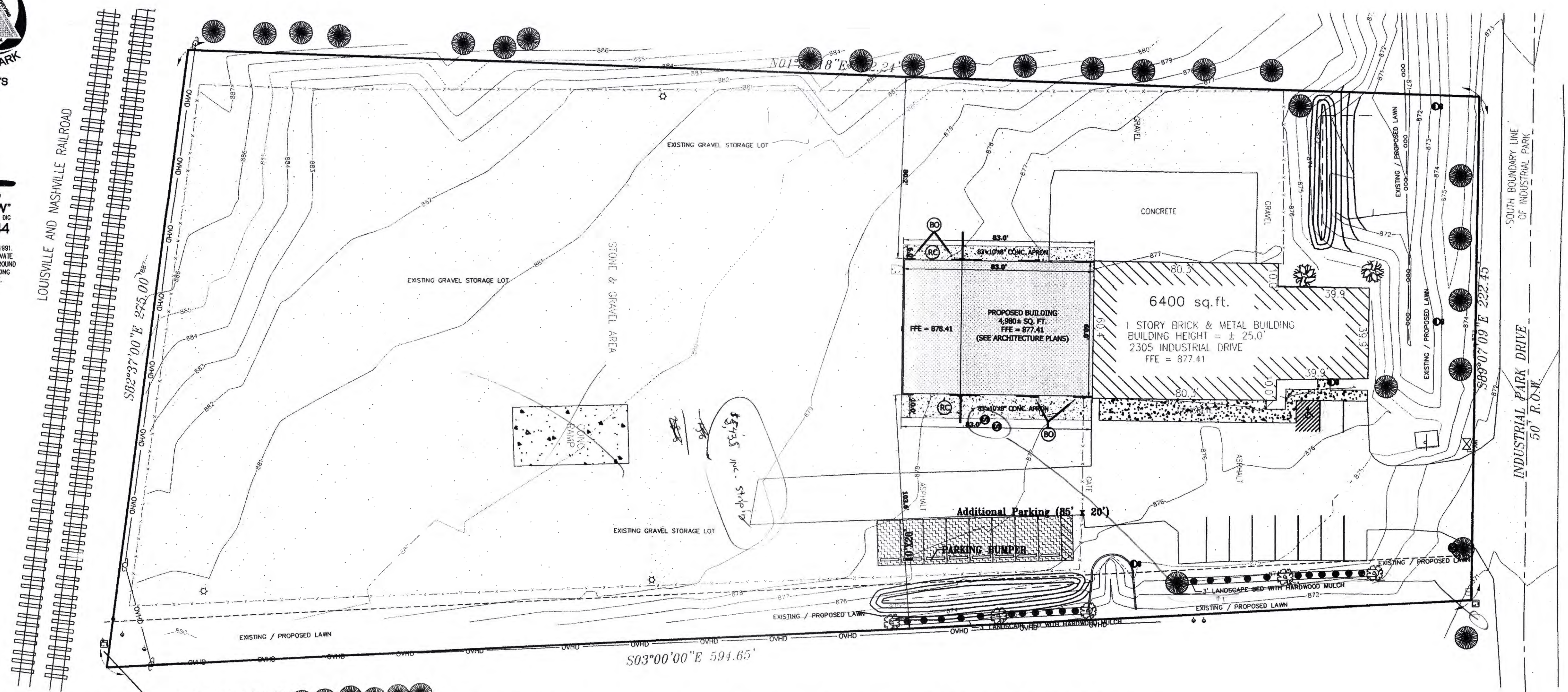


HOLEY MOLEY SAYS
"DON'T DIG BLIND"

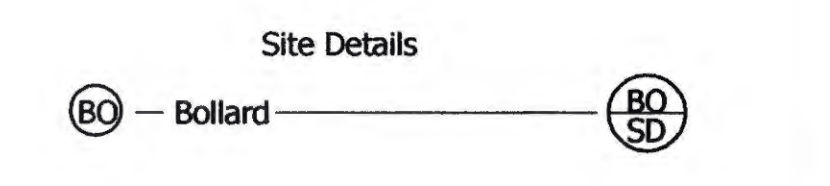
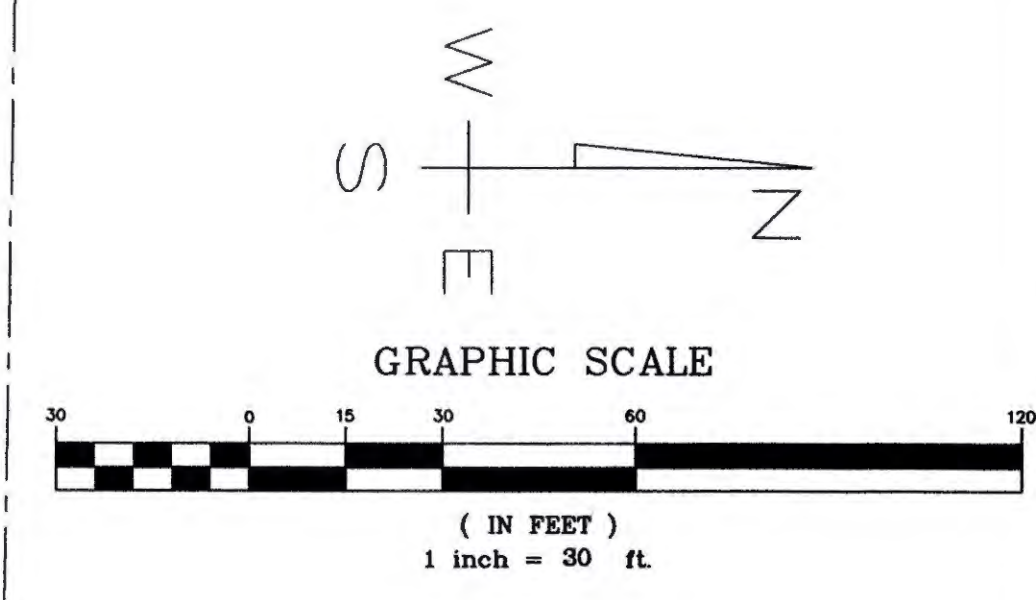


"IT'S THE LAW"
CALL 2 WORKING DAYS BEFORE YOU DIG
1-800-382-5544

CALL TOLL FREE
PER INDIANA STATE LAW IS-89-1991
IT IS AGAINST THE LAW TO EXCAVATE
WITHOUT NOTIFYING THE UNDERGROUND
LOCATION SERVICE TWO (2) WORKING
DAYS BEFORE COMMENCING WORK.



- General Notes
- The contractor shall comply with all pertinent provisions of the Manual of Accident Prevention in Construction issued by AGC of America and the Safety and Health Regulations of Construction issued by the U.S. Department of Labor.
 - The contractor is responsible for obtaining all permits necessary to complete all work shown on these plans.
 - The contractor shall be responsible for locating all existing utilities prior to commencement of work. The contractor shall contact the utilities company at least 72 hours prior to commencement of work.
 - When necessary for completion of new construction, the contractor shall repair any damage to existing features (i.e. paving, utilities, drainage, etc.), which are to remain at no additional cost to the owner.
 - The contractor shall make field adjustments as necessary to provide a smooth vertical and horizontal transition between existing and proposed pavements.
 - All site construction, materials, and features (i.e. curbs, walks, paving, concrete, storm drainage features, seeding, sodding, earthwork, etc.) shall be in accordance with all city and state standards and specifications.
 - The contractor shall field verify dimensions before ordering material. Any discrepancies shall be reported to the owner or his representative and resolved prior to the commencement of work.



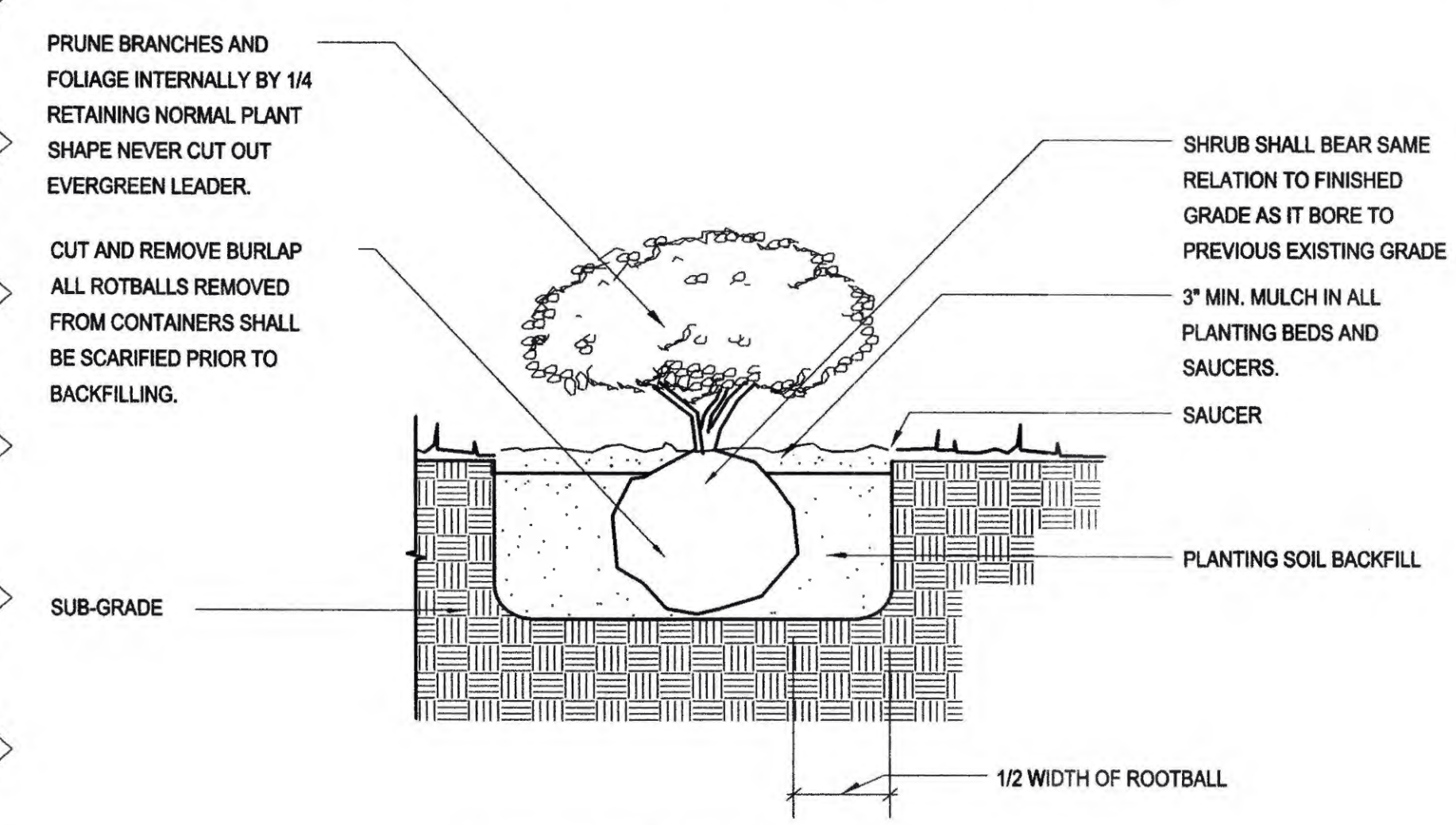
CAT MACALLISTER
2305 W Industrial Park
Bloomington, IN.



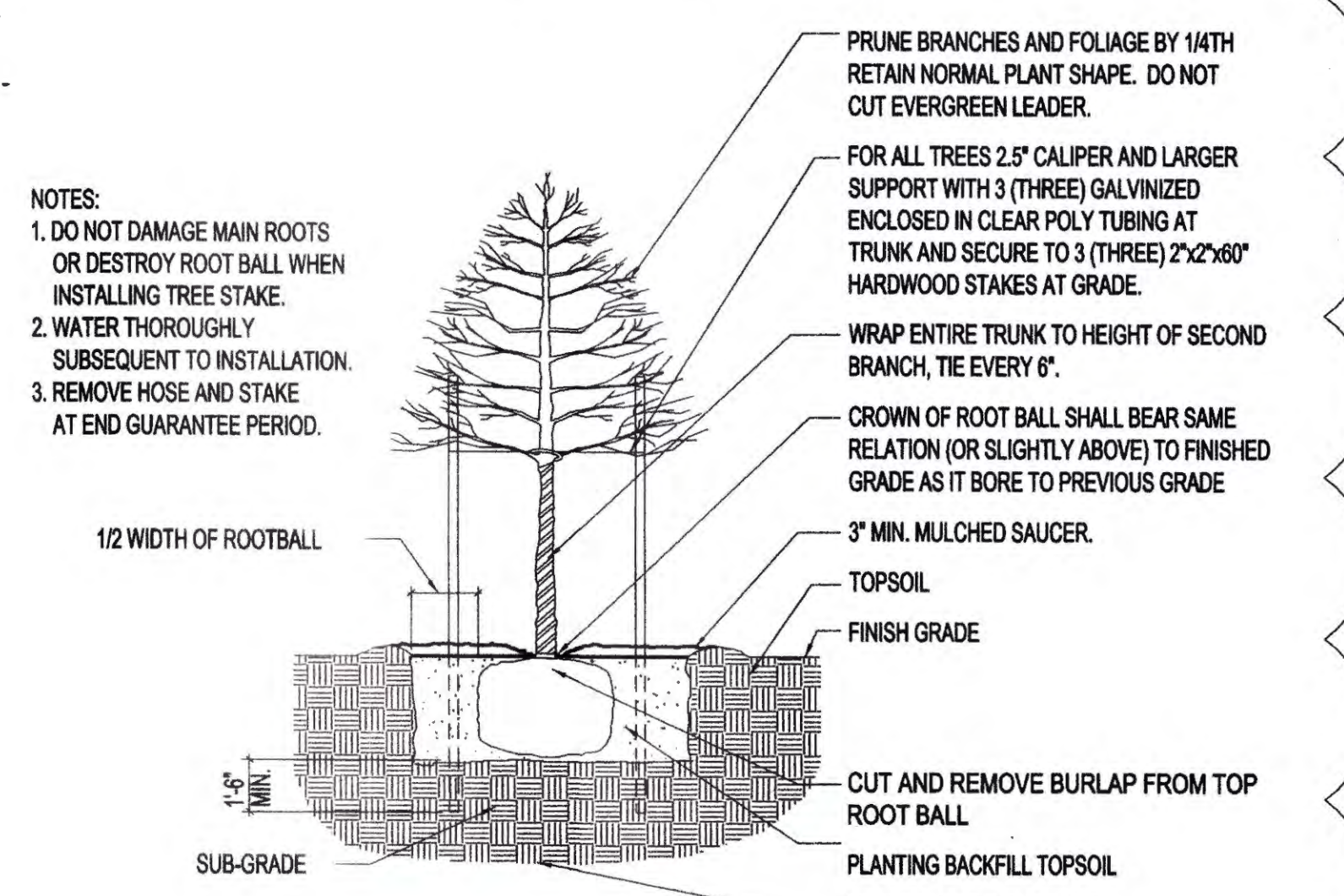
Nathan A. White

Approved By: DS
Drawn by: NW
Date of Last Field Work:
Date Plotted:

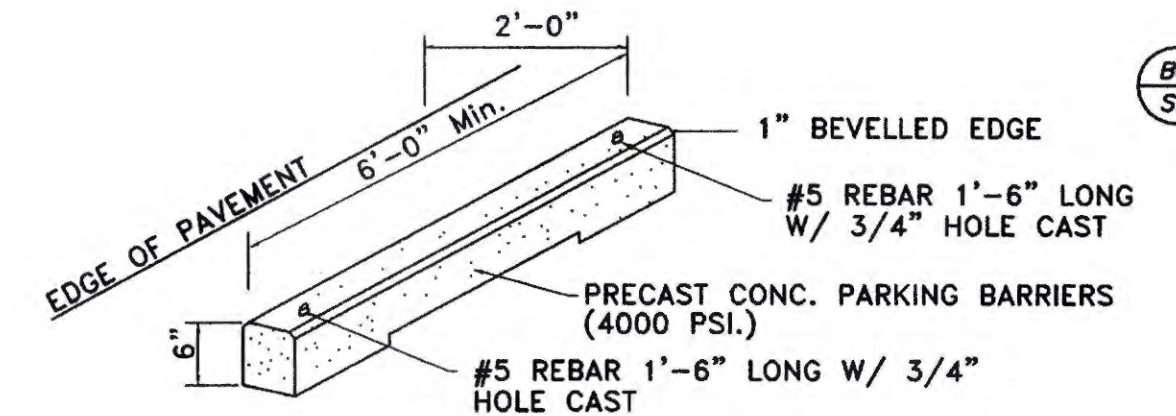
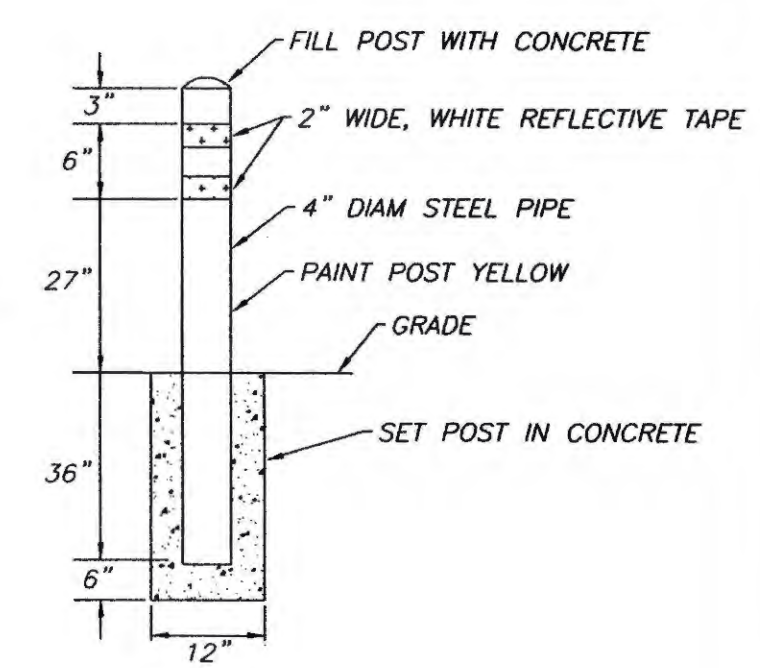
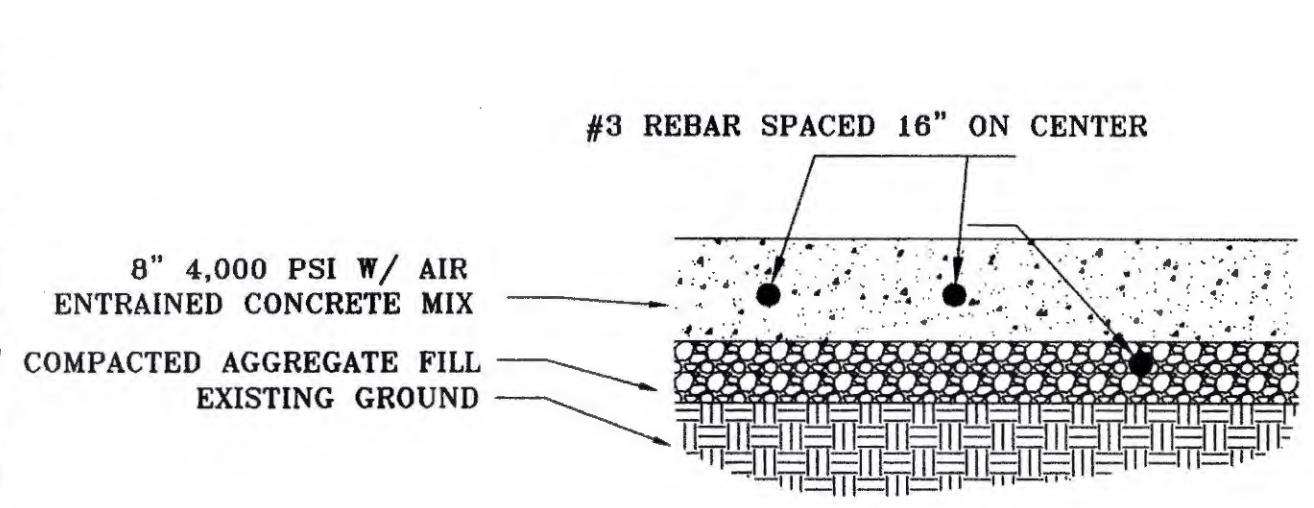
Benchmark Land Services, Inc.
9855 Crosspoint Blvd., Suite 110
Indianapolis, IN 46256
Ph. 317-841-1506 Fax 317-841-1507
www.benchmarklands.com



SHRUB PLANTING DETAIL
NO SCALE

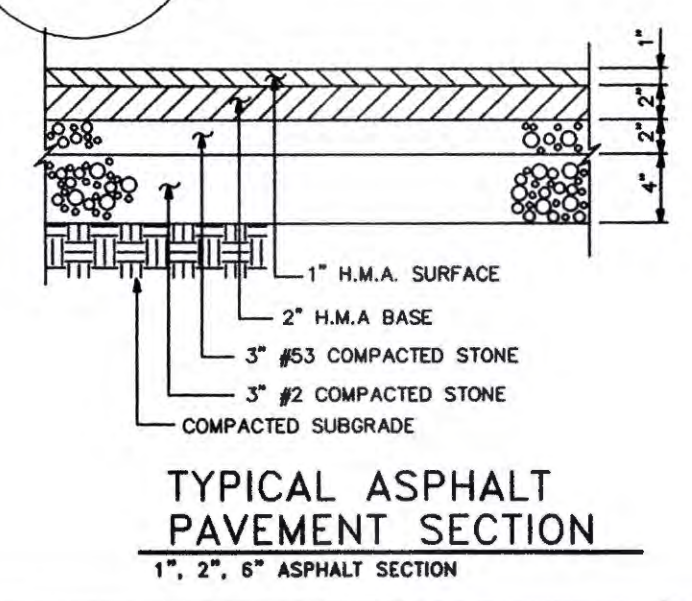


SHADE TREE PLANTING DETAIL
NO SCALE



PARKING SUMMARY

- MAXIMUM NUMBER OF EMPLOYEES = 9
- PARKING SPACES PROVIDED = 11
- MACHINERY SALES 2/1,000 SF OF OFFICE = 3.25 SPACES
- AUTO REPAIR 1/ SERVICE BAY + 1/ EMPLOYEES = 7 BAYS + 9 EMPLOYEES = 16
- TOTAL PARKING SPACES REQUIRED = 19
- PARKING SPACES ADDED = 8
- TOTAL PARKING SPACES PROVIDED = 19

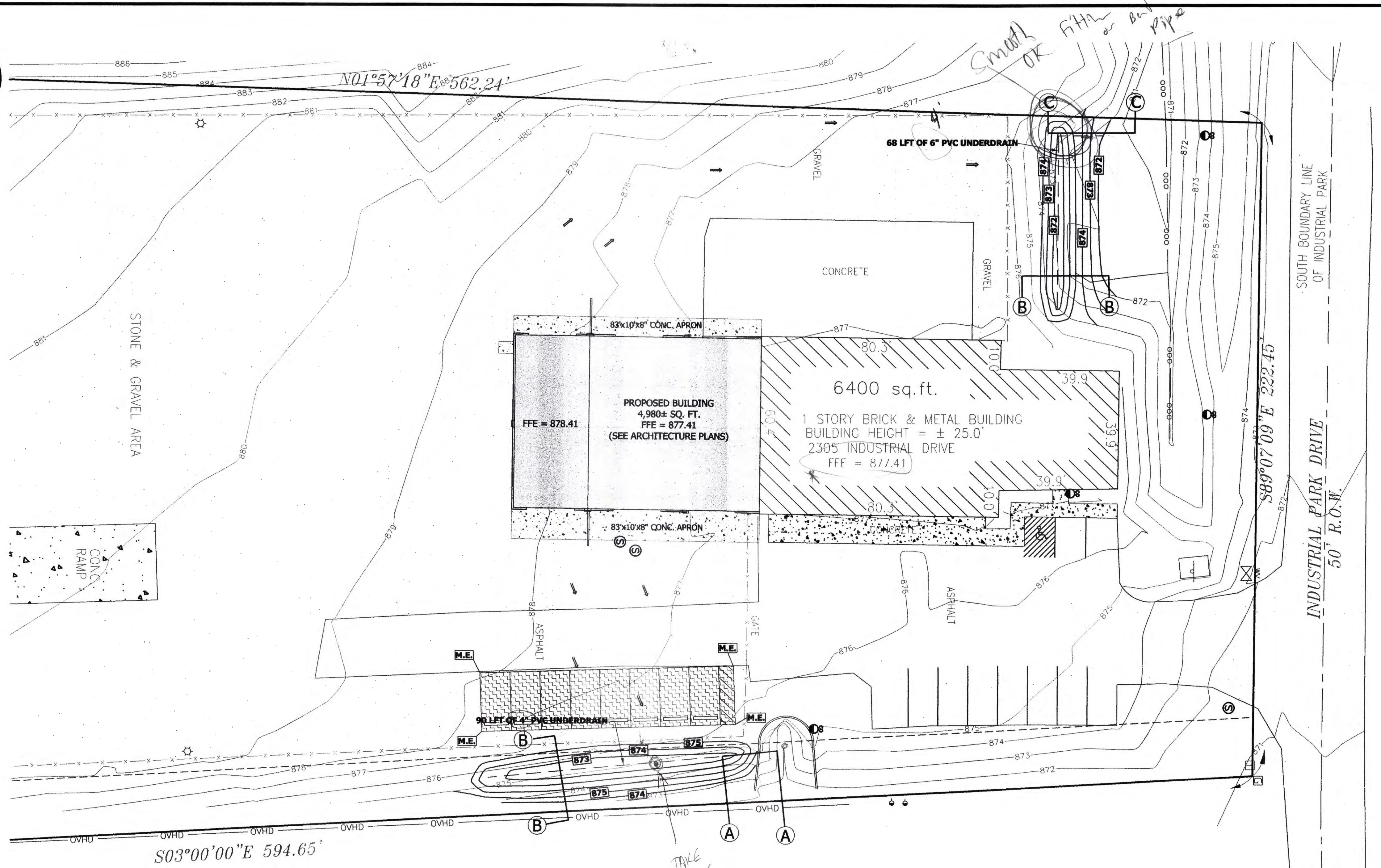


PLANTING SYMBOL	COMMON NAME	BOTANICAL NAME	DENSITY VALUE
	ORNAMENTAL PEAR	PYRUS CALLERYANA	D=20
	REDTWIG DOGWOOD	CORNUS SERICEA BAILEYI	D=5
	UNKNOWN CONIFER	UNKNOWN CONIFER	D=35
	UNKNOWN DECIDUOUS	UNKNOWN DECIDUOUS	D=35

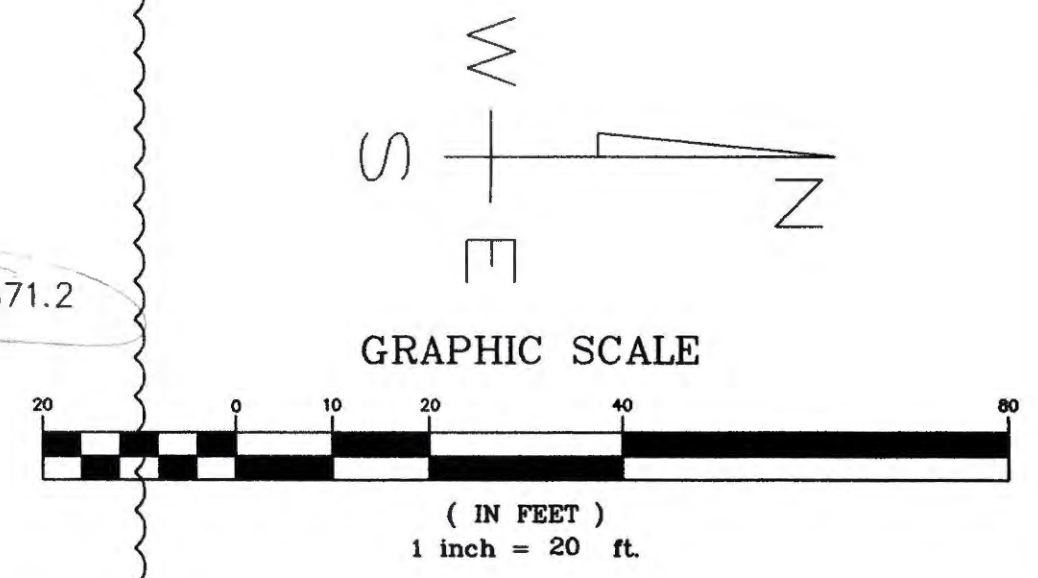
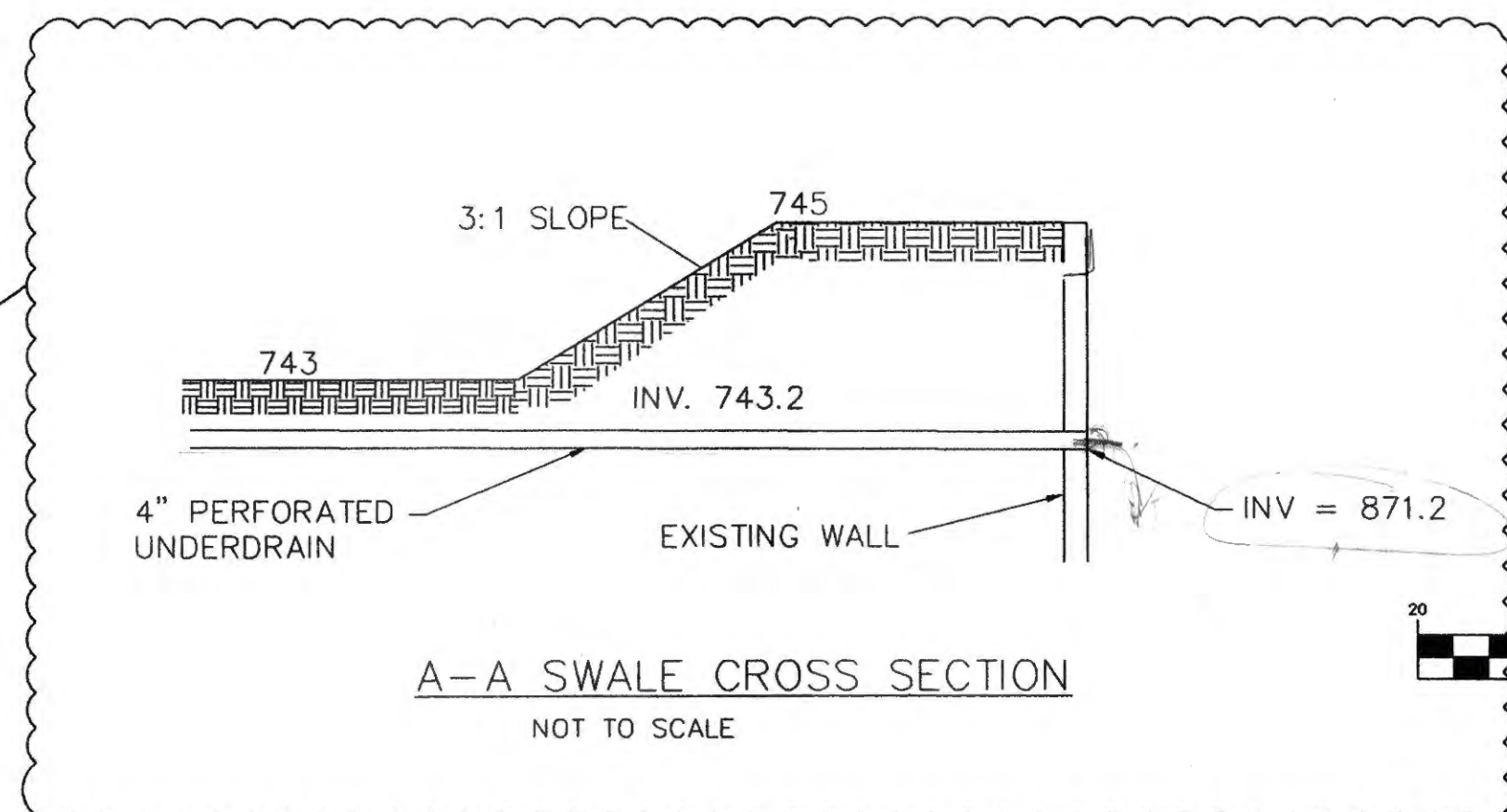
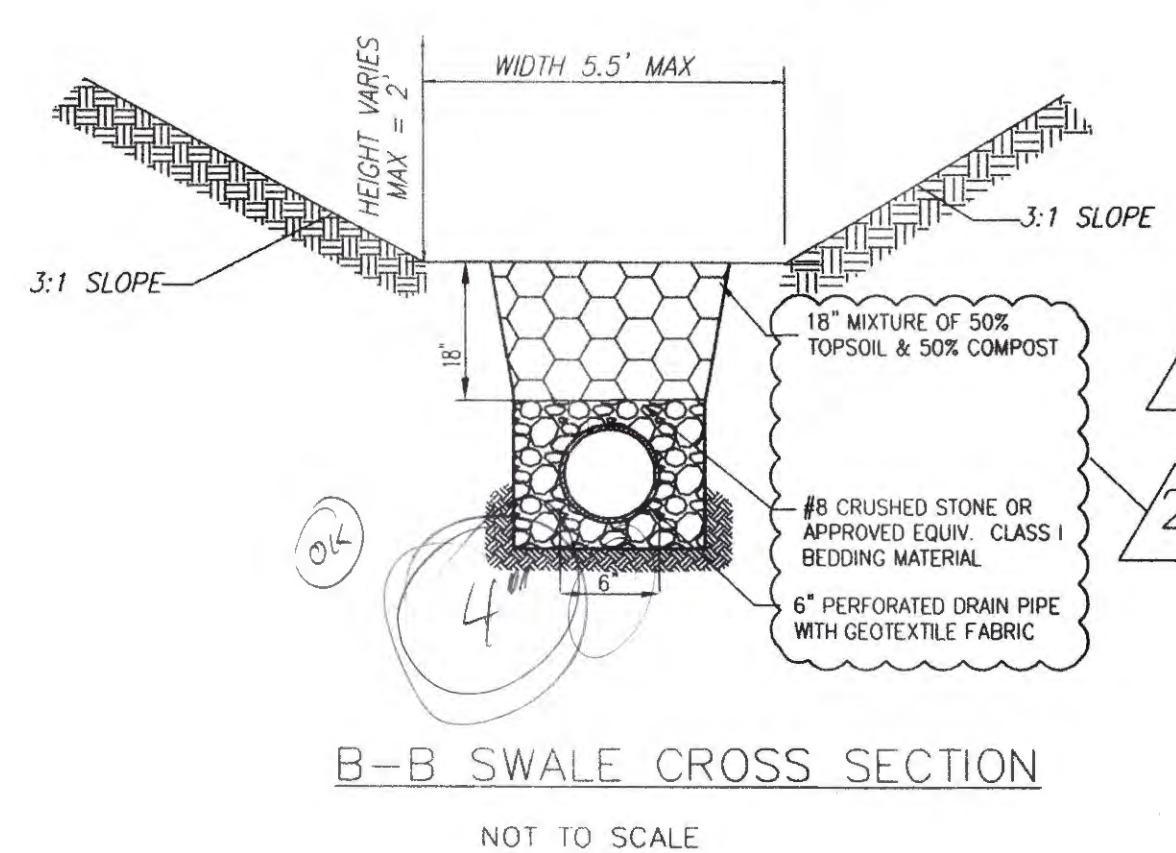
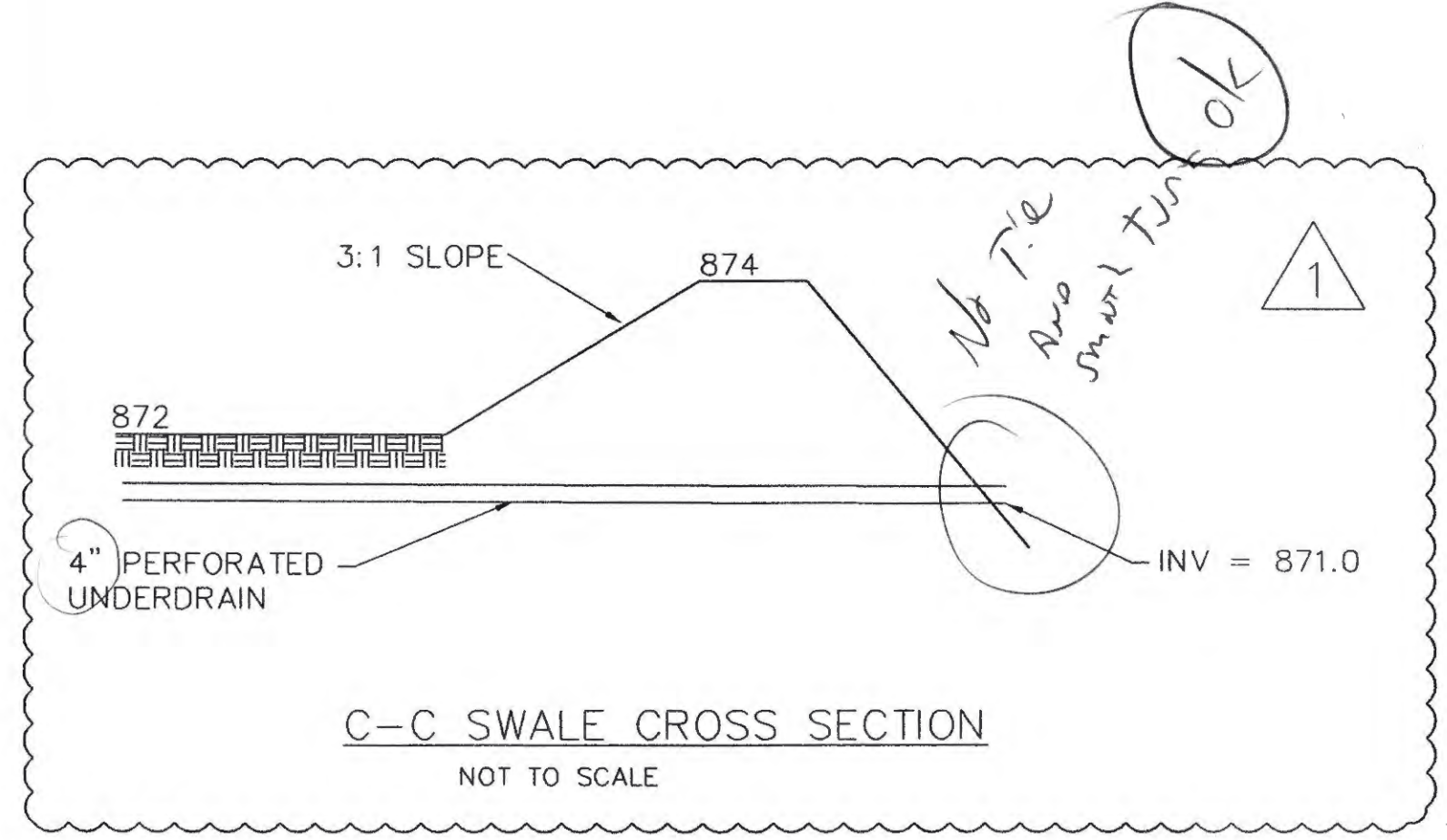
Rev#	Date	Remarks
1	5-28-08	Revised Per County Drainage Review and B.L.S. Q.C. Review
2	6-16-08	Revised Per County Review

Site/Landscape Plan
PROJECT 3-489
C3.00

Z:\Engineering\3-489\DWG\3-489 SITE.dwg, 3.00, 6/16/2008 10:38:23 AM, \\ocE\ocE\TDS400, 1:1



- Notes:
1. Do not disturb vegetation or remove trees except when necessary for grading purposes. The contractor shall install adequate tree protection measures prior to any grading activities.
 2. Strip topsoil from all cut and fill areas to a depth of 6" min. Stockpile and redistribute over final graded areas where indicated on the plans while maintaining erosion control measures indicated on the plans and required by all city, state, and federal authorities.
 3. The contractor shall seed and mulch all distributed areas.
 4. Clean all silt barriers when they are approximately 50% filled with sediment or as directed by the owner or his representative.
 5. Remove sediment from all drainage structures before acceptance by the utility regulation or municipal authority.
 6. Temporary erosion and water pollution control devices shall be installed prior to construction begins and remain in place and function appropriately until construction is complete and accepted by the owner or his representative and all regulating agencies and municipal authorities.
 7. Replacement of and/or additional erosion control measures may be required as determined by the owner's representative.
 8. The contractor shall comply with all relative provisions of the Manual of Accident Prevention in Construction issued by the AGC of America and the Safety and Health Regulations of Construction issued by the U.S. Dept. of Labor.
 9. The contractor shall take special care to compact fill sufficiently around and over all pipes, structures, valve stems, etc., inside proposed paved and building areas. The contractor at no additional cost to the owner shall restore any settlement during the warranty period.
 10. The contractor shall leave graded areas in a free, draining condition.
 11. Maximum cut or fill slopes shall be as directed on the plans or a maximum of 3:1.
 12. Construction access route to and from the site shall be based with stone as indicated.
 13. Positive drainage shall be established as the first order of work and shall be maintained at all times. Soil softened by perched water in foundation and pavement areas must be undercut and replaced with compacted fill materials. Groundwater infiltration into excavations shall be removed using gravity drainage or sump-pump techniques.
 14. In no case shall slope height, slope inclination, or excavation depth, including trench drain construction, exceed those specified in local, state, and federal regulations. Specifically, the current OSHA Health and Safety Standards for Excavations (29 CFR Part 1926) shall be followed.



CAT MACALLISTER
2305 W Industrial Park
Bloomington, IN.



Nathan A. White

Approved By: DS
Drawn by: NW
Date of Last Field Work:
Date Plotted:

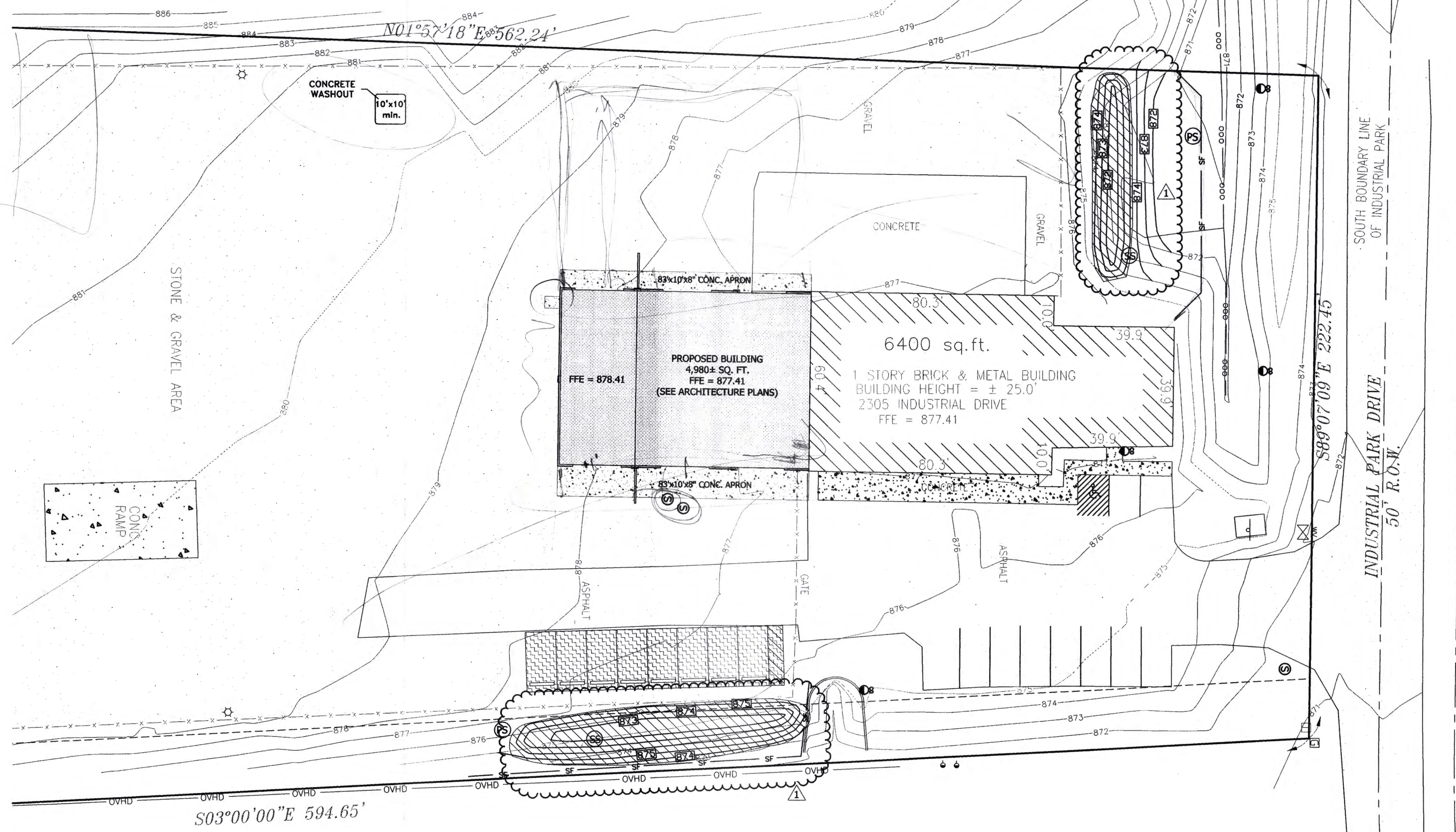
Benchmark Land Services, Inc.
9855 Crosspoint Blvd., Suite 110
Indianapolis, IN 46256
Ph. 317-841-1506 Fax 317-841-1507
www.benchmarklands.com

Rev#	Date	Remarks
1	5-28-08	Revised Per County Drainage Review and B.L.S. O.C. Review
2	6-16-08	SPOT GRADES ADDED TO NEW PARKING AREA.

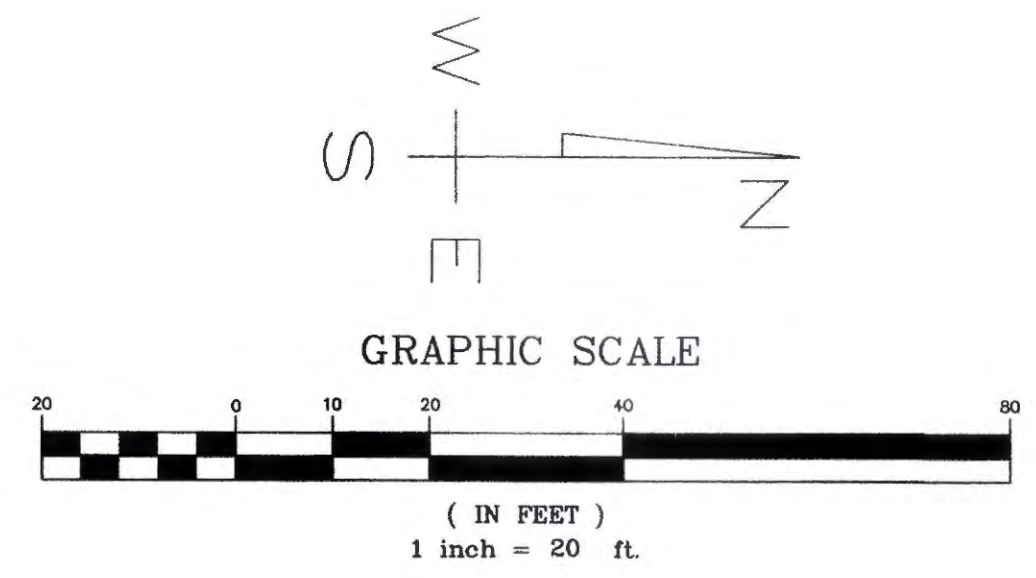
Grading Plan

PROJECT 3-489

C3.10



OWNER INFORMATION:
 CAT MacAllister
 2305 W Industrial Park
 Bloomington, Indiana
 Ph: 812-349-9220



- Notes:
- Contractor shall at all times insure that erosion control measures protecting existing drainage facilities be in place prior to the commencement of any phase of construction or land alteration activity. Also, it is the contractor's responsibility to ensure all codes and ordinances are followed and permits are attained.
 - As soon as areas are brought to finish grade or new drainage facilities are constructed, contractor shall construct the applicable erosion control measures required by and delineated on the approved plan as required or by local authority.
 - During site construction activity, the contractor shall:
 - Construct and monitor all perimeter silt barriers.
 - Install and maintain clean crushed stone at all construction entrances/exits to the site and any areas used for parking.
 - Prevent construction silt from leaving the site at all times and place excavated materials away from any direct drainage flow runoff from the site.
 - Temporary vegetation shall be installed within 7 days following completion of any phase of grading. Contractor shall inspect all erosion control measures daily and repair as necessary to prevent erosion. Siltation shall be removed from areas where failures have occurred. Corrective action shall be taken within 24 hours to maintain all erosion control.
 - At such time that rough grading of the site is complete and drainage diverts to inlets, inlet erosion control measures shall be installed at all inlet structures.
 - Erosion control measures, construction entrances, and siltation barriers shall remain in place until a good stand of grass has been obtained and/or paving operations are complete. After complete vegetative establishment or paving, all silt in pipes, detention facilities and swales shall be removed within 10 days so that finished grades are met.
 - Fertilizers and pesticides should not be used in ditches, channels, or near waterways.

- Erosion Control Details
- PS - Permanent Seeding
 - SS - SWALE SEED MIX
 - SF - SILT FENCE
 - EROSION CONTROL BLANKET (NORTH AMERICAN GREEN S-150 OR EQUAL)



CAT MACALLISTER
 2305 W Industrial Park
 Bloomington, IN.



Nathan A. White

Approved By: DS
 Drawn by: NW
 Date of Last Field Work:
 Date Plotted:

Benchmark Land Services, Inc.
 9855 Crosspoint Blvd., Suite 110
 Indianapolis, IN 46256
 Ph. 317-841-1506 Fax 317-841-1507
 www.benchmarkis.com

Rev#	Date	Remarks
1	5-28-08	Revised Per County Drainage Review and B.L.S. Q.C. Review

Erosion Control Plan

PROJECT 3-489

