



STREET-LEVEL RETAIL/OFFICE SPACE
EXCELLENT VISIBILITY IN BUSY AREA

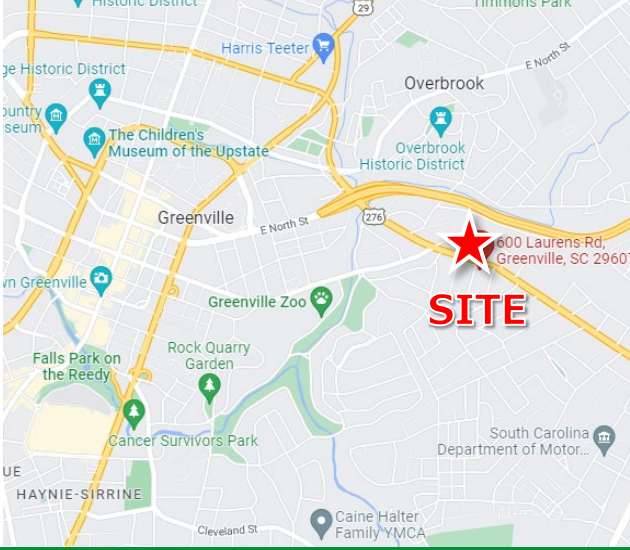
- Suites are able to be combined
- Suite A: (±925 SF) Open floorplan with restroom
- Suite B: (±1,850 SF) Open floorplan with offices & restroom
- Suite D: (±1,100 SF) Lobby, conference room, office & restroom
- Street-level suites offers customer and staff parking, easy access and excellent visibility
- Large windows offer tons of natural light
- Multiple recent updates to building (paint, awnings, parking lot resurfaced, updated landscaping, etc.)
- Located extremely close to Downtown Greenville on popular Laurens Road
- Monument Signage on Laurens Road available
- Zoned MX-2 | City of Greenville
- NNN Estimate: \$3.75/SF

FOR LEASE:

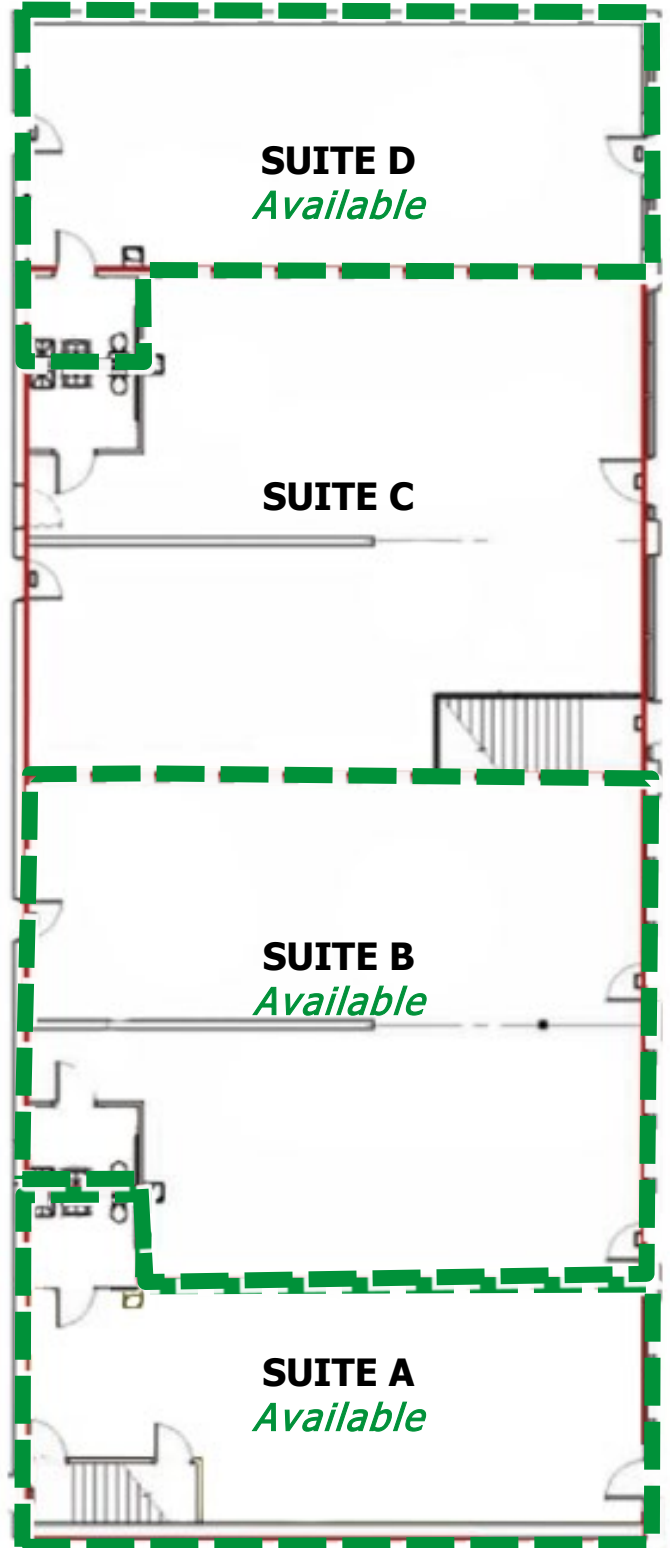
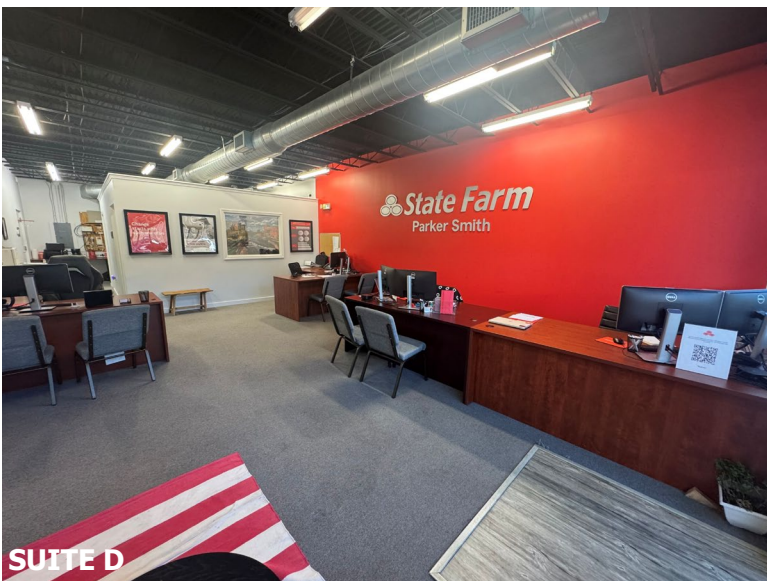
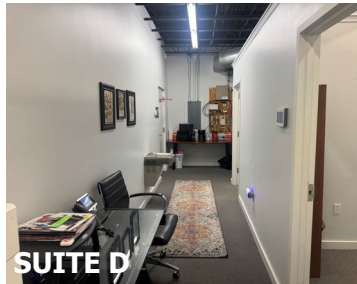
Suite A: \$1,950/month + NNN

Suite B: \$3,850/month + NNN

Suite D: \$2,190/month + NNN



PHOTOGRAPHY & FLOORPLAN



PHOTOGRAPHY



**PHOTOGRAPHY
& LOCATION**

- Suite A: (±925 SF)
- Suite B: (±1,850 SF)
- Suite D: (±1,100 SF)
- NNN: \$3.75/SF

