

FOR LEASE SOUTH TOWNE II

10150 South Centennial Parkway
Sandy, Utah 84070



EXTERIOR RENOVATION NOW COMPLETE!

PROPERTY HIGHLIGHTS

- 1,998 to 58,131 RSF
- Lease Rate: \$17.95 NNN
- Immediately Available
- Extraordinary Parking: 6/1,000 RSF
- Back-up Generator
- On-site Showers
- Crown and Eyebrow Signage facing I-15 Available
- EV Charger installation approved and forthcoming



Contact
JUSTIN BAILEY
Director
+1 801 303 5493
justin.bailey@cushwake.com

170 South Main Street
Suite 1600
Salt Lake City, UT 84101
Main +1 801 322 2000
cushmanwakefield.com

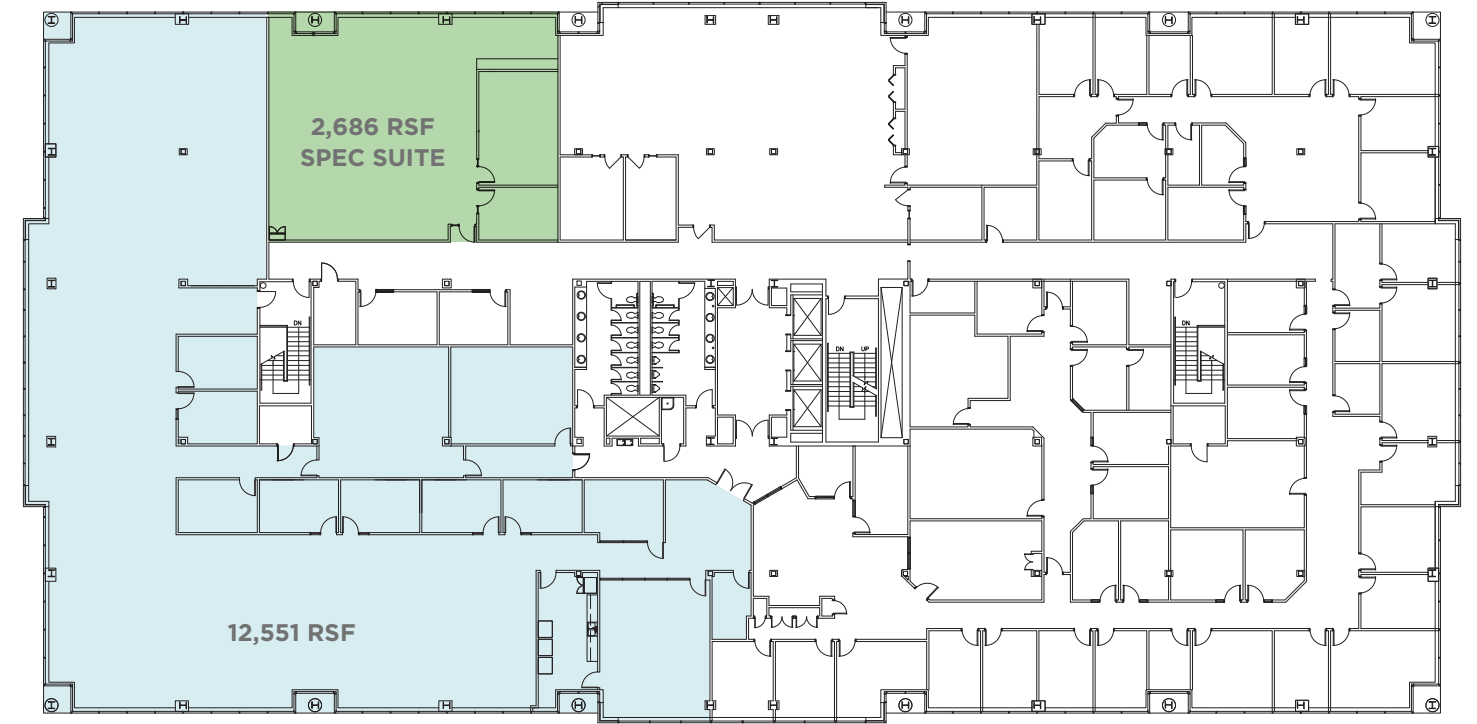
FLOOR PLANS

10150 South Centennial Parkway
Sandy, UT

SECOND FLOOR 1,998 TO 17,841 RSF AVAILABLE (WILL DEMISE)



FOURTH FLOOR 2,686 TO 15,237 RSF AVAILABLE (WILL DEMISE)

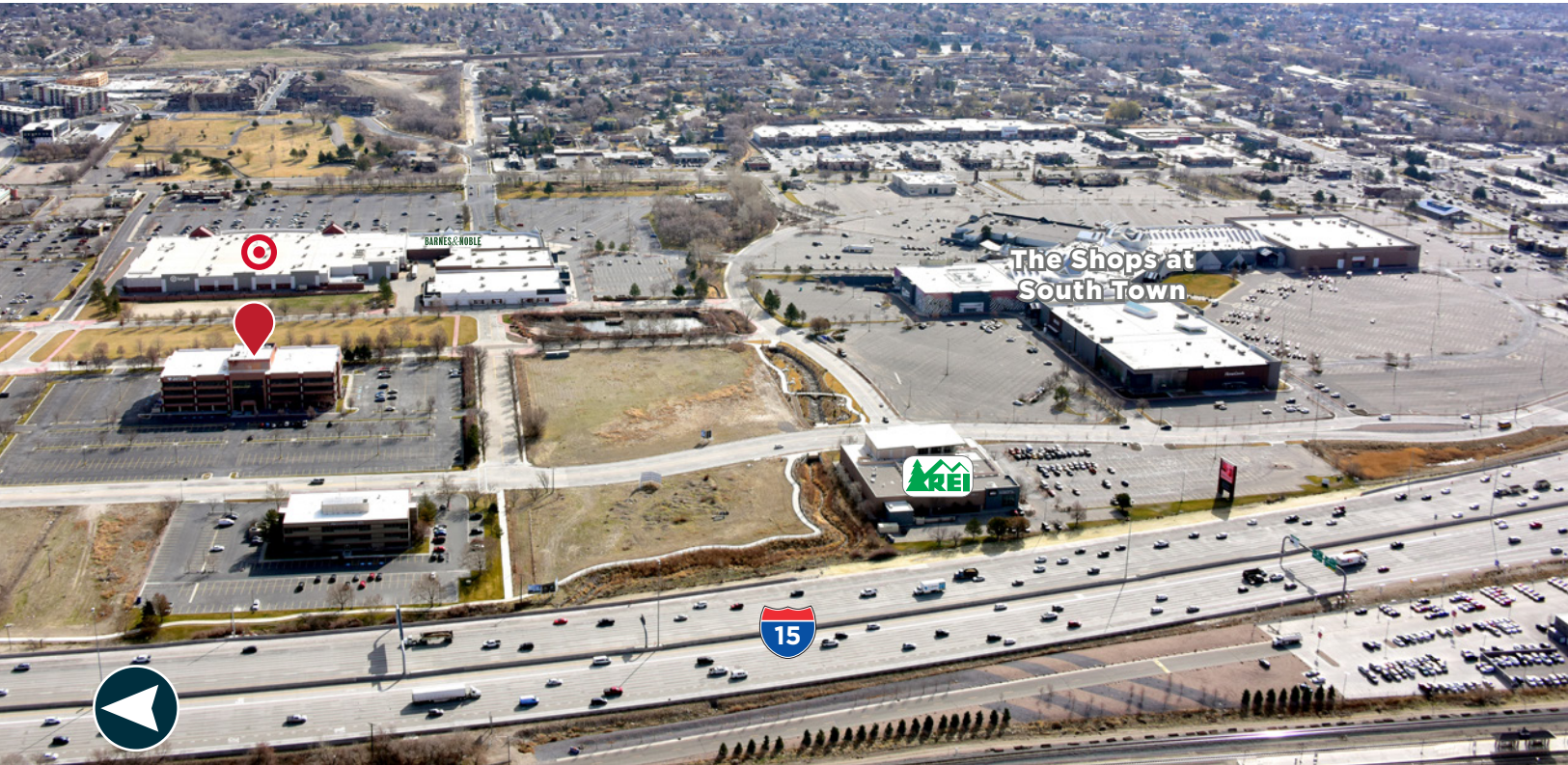


THIRD FLOOR 2,500 TO 25,053 RSF AVAILABLE (WILL DEMISE) FURNITURE AVAILABLE IN 9,373 RSF SPACE



FOR LEASE SOUTH TOWNE II

10150 South Centennial Parkway
Sandy, Utah 84070



Contact

JUSTIN BAILEY

Director

+1 801 303 5493

justin.bailey@cushwake.com

170 South Main Street
Suite 1600
Salt Lake City, UT 84101
Main +1 801 322 2000
cushmanwakefield.com