

Office



Restroom



Rear View

INDUSTRIAL SPACE FOR LEASE

410 Elwood Rd. #103, Irving TX 75061

**BASE RENT: \$1500 +
Utilities (Water & Electricity)**

Clearance Height: 16 FT

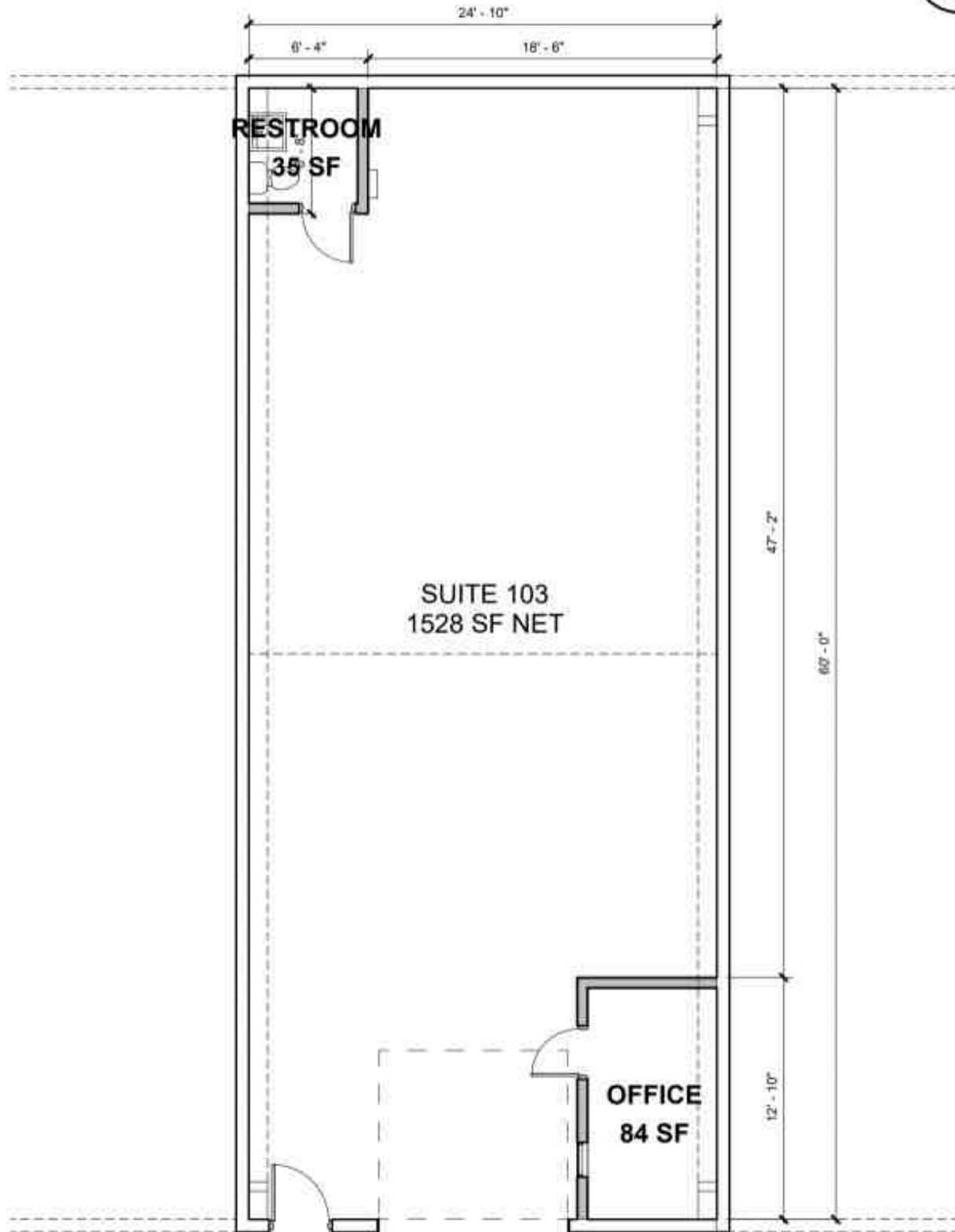
Suite Square Footage
1,500

Year of Construction
1984

Real Estate Broker

Joe Goldsmith
214-499-8569
gdj405@gmail.com

410 Elwood Rd #103,
Irving, TX 75061



① Suite 103 Floor Plan
1/8" = 1'-0"

