



ASSET
MANAGEMENT
SERVICES

AVAILABLE FOR LEASE IN MURRAY
488 E WINCHESTER ST (6400 South)
\$18.50 RSF FS

COMMERCE PARK III



AVAILABLE IMMEDIATELY

PROPERTY FEATURES

- Easy Access to I-15 & I-215 Freeways
- Great Mid-Valley Location
- Excellent Access & Visibility
- Located on UTA Bus Route
- Close to Fashion Place Mall & Numerous Restaurants
- On Site Management

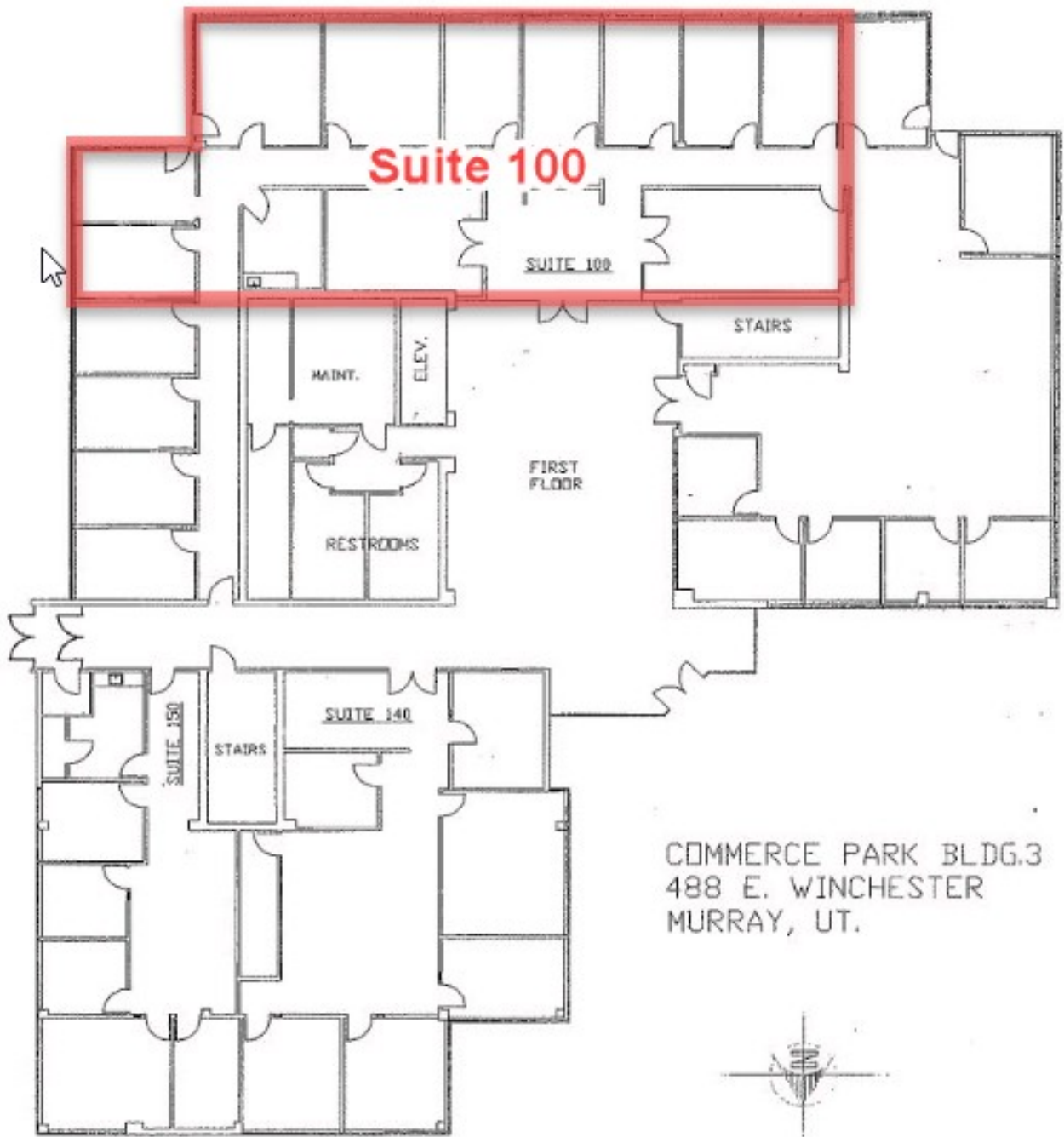
SPACE AVAILABLE FOR LEASE

- Suite 100 - 3,694 RSF
- Suite 350 - 2,870 RSF
- Suite 400 - 14,353 Available March 2019

GREG STRONG, CCIM
gstrong@ams-utah.com

488 E WINCHESTER STREET, STE 325
MURRAY, UT 84107 801.288.8811
ams-utah.com

SHAUNA LYNN
slynn@ams-utah.com



COMMERCE PARK BLDG.3
488 E. WINCHESTER
MURRAY, UT.

- Suite 100 - 3,694 RSF

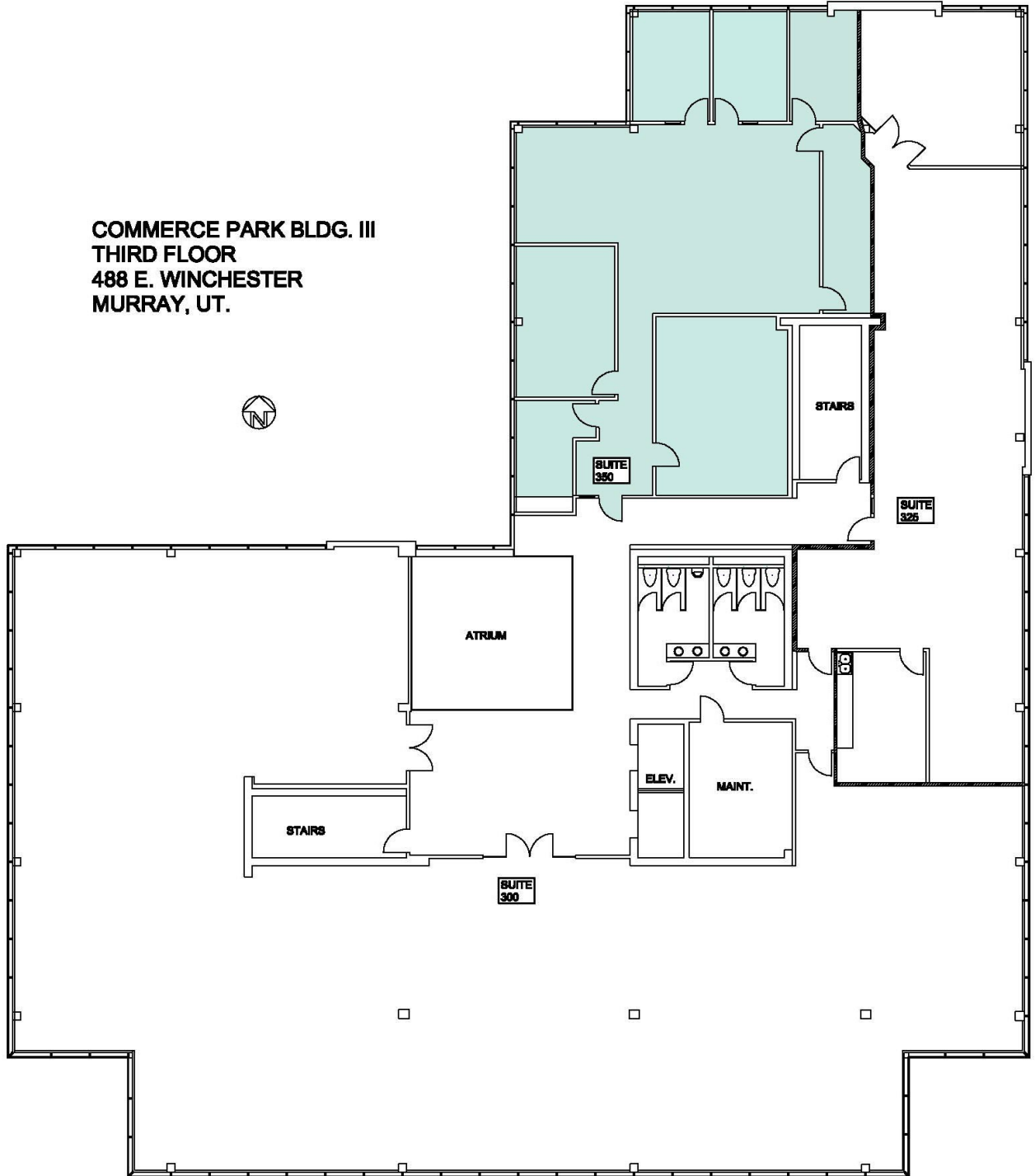
GREG STRONG, CCIM
gstrong@ams-utah.com

801.288.8811

SHAUNA LYNN
slynn@ams-utah.com



COMMERCE PARK BLDG. III
THIRD FLOOR
488 E. WINCHESTER
MURRAY, UT.



- Suite 350 - 2,870 RSF

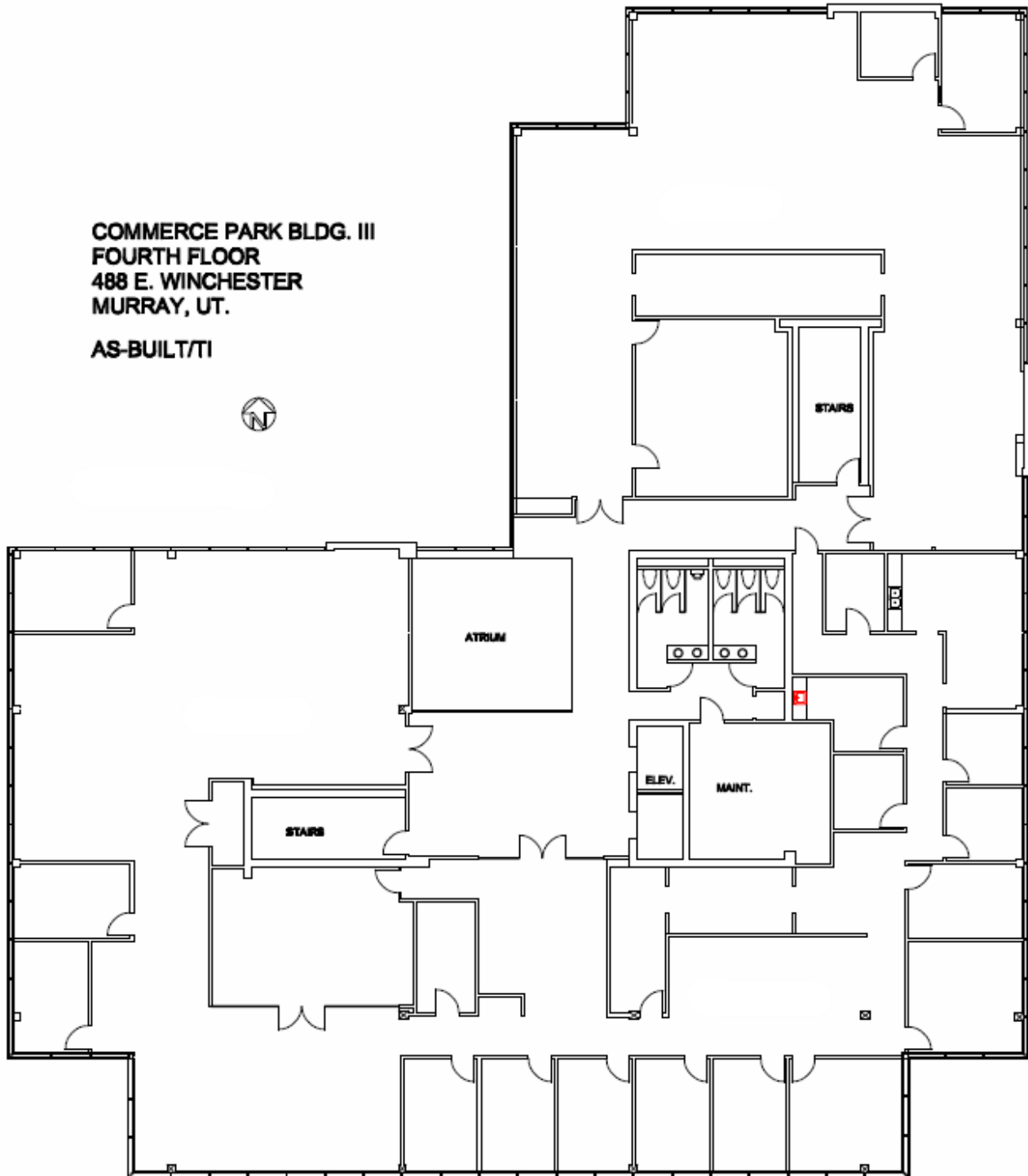
GREG STRONG, CCIM
gstrong@ams-utah.com

801.288.8811

SHAUNA LYNN
slynn@ams-utah.com



COMMERCE PARK BLDG. III
FOURTH FLOOR
488 E. WINCHESTER
MURRAY, UT.
AS-BUILT/TI

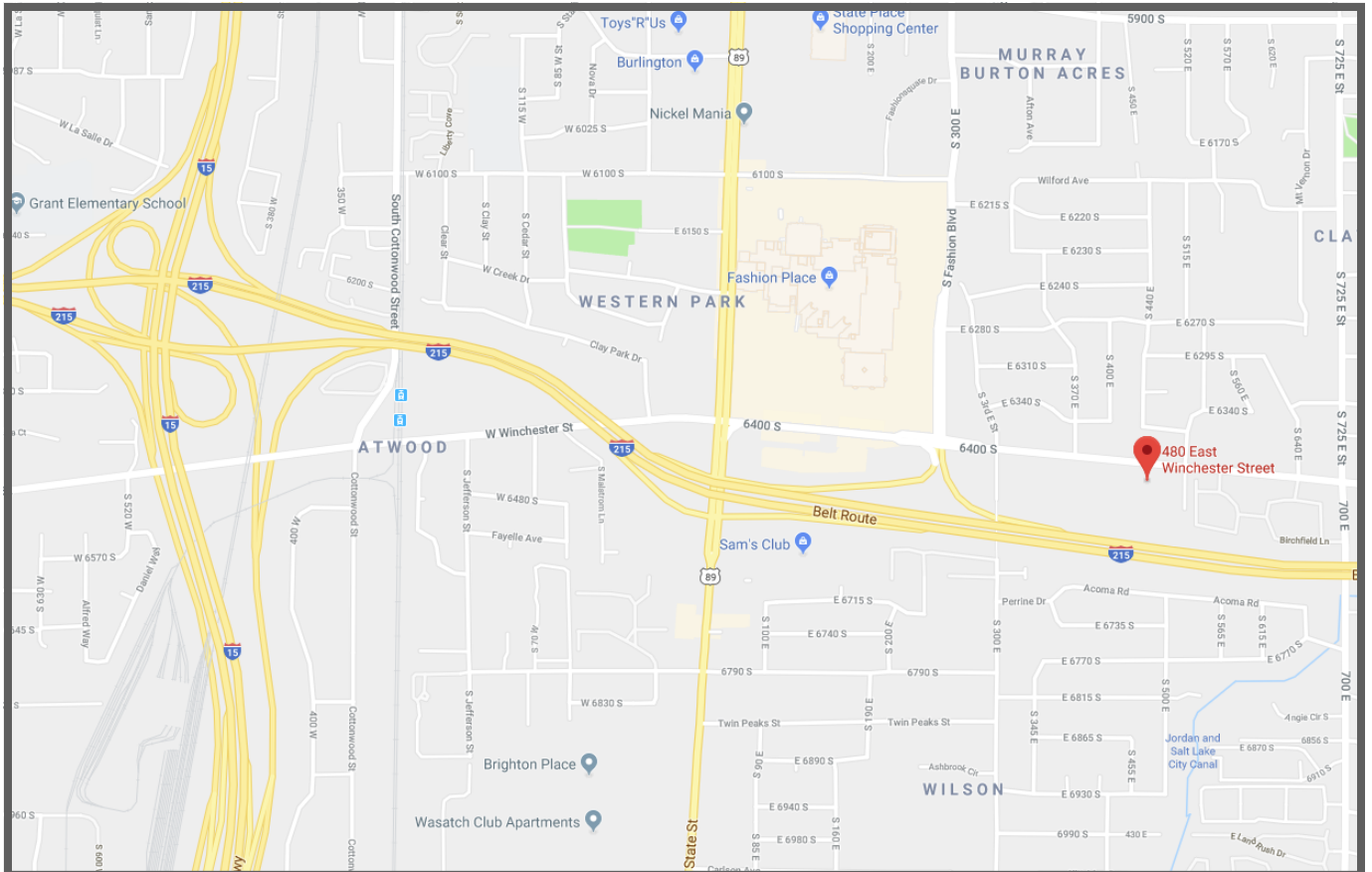


- 4th Floor - 14,353 RSF Available March 1st 2019

GREG STRONG, CCIM
gstrong@ams-utah.com

801.288.8811

SHAUNA LYNN
slynn@ams-utah.com



GREG STRONG, CCIM
gstrong@ams-utah.com

801.288.8811

SHAUNA LYNN
slynn@ams-utah.com