



**CUSHMAN &
WAKEFIELD**
Ottawa

515

LEGGET DRIVE KANATA

OFFICE FOR SUBLEASE
SUITE 700—4,647 SF

515 LEGGET

515

LEGGET DRIVE KANATA

OFFICE FOR SUBLEASE

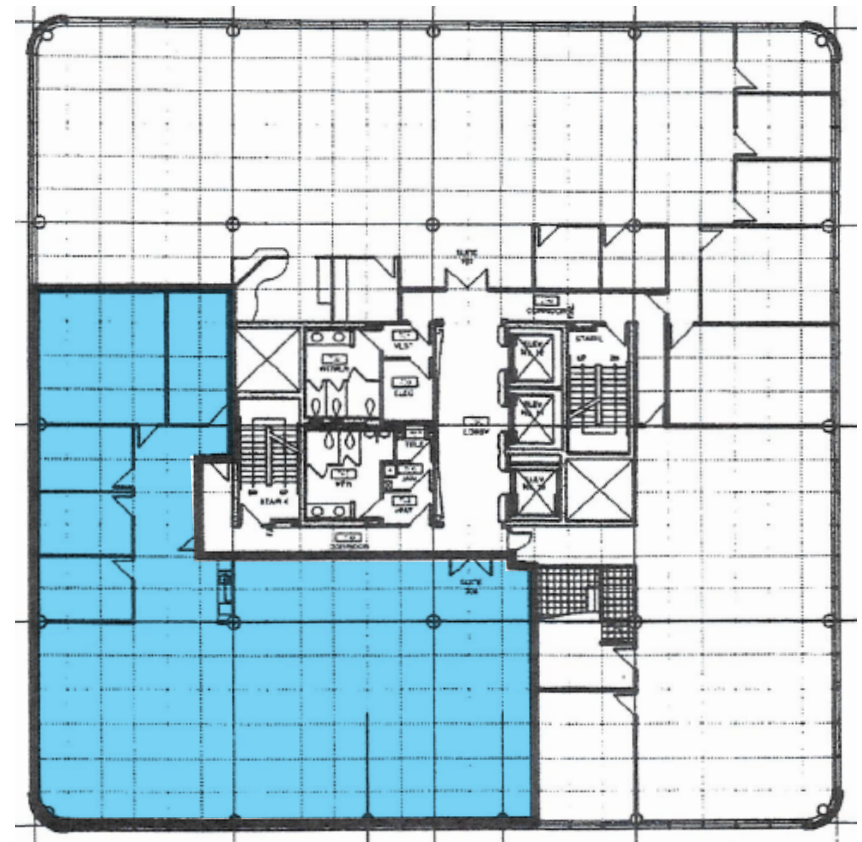
DETAILS

Space Available:	Suite 700 - 4,647 SF
Net Rent:	\$13.00 - \$13.50 PSF
Additional Rent:	\$16.55 PSF (2023 estimate)
Occupancy:	Immediate
Sublease Term Expiry:	March 30, 2029

HIGHLIGHTS

- + Located in the Kanata North Technology Park
- + Mix of open space, private offices, meeting room & open kitchen
- + Free on-site parking
- + Brookstreet Hotel, restaurants and amenities right next door
- + Three high speed elevators
- + Barrier free access
- + Common loading dock with dock leveler
- + Card access system
- + Fully sprinklered

FLOOR PLAN



CONTACT

Alain Desmarais

Executive Vice President
Broker of Record
Direct: 613 780 1566
Mobile: 613 795 9001
adesmarais@cwottawa.com

Madisson Carnochan

Sales Representative
Direct: 613 780 1583
mcarnochan@cwottawa.com

Cushman & Wakefield Ottawa
Brokerage, Independently Owned & Operated
55 Metcalfe Street, Suite 400
Ottawa, ON K1P 6L5

Cushman & Wakefield Ottawa

No warranty or representation, expressed or implied, is made as to the accuracy of the information contained herein, and same is submitted subject to errors, omissions, change of price, rental or other conditions, withdrawal without notice, and to any specific listing condition, imposed by our principals.