



Offering Summary

Lease Rate:	Negotiable
Building Size:	3,952 SF
Lot Size:	1.08 Acres
Year Built:	1970
Zoning:	C5-C
Parking:	62 Surface-Level Spaces
Submarket:	Northern Suburbs
Traffic Counts	Approx. 2,600 VPD

Property Overview

411 N Seymour Avenue is a freestanding former bank building located in in downtown Mundelein. The single-story, 3,952 SF building sits on a 1.08-acre parcel and offers frontage along North Seymour Avenue. The Property features four (4) drive-thru lanes, ample parking with 62 surface level spaces on-site, an interior buildout with private offices and a vault. Nearby retailers include Target, Jewel-Osco, Walgreens, Garden Fresh Market, Chase Bank, Buffalo Wild Wings, Panera Bread, Starbucks, Taco Bell, McDonald's, Culvers, Popeye's, and Dunkin', among many others.

Property Highlights

- 3,952 SF freestanding building with four (4) drive-thru lanes in suburban Mundelein's downtown
- Strong visibility and ±273 feet of frontage along N Seymour Avenue
- 62 on-site parking spaces
- Centrally located in northwest suburban Mundelein with strong demographics and high household incomes
- Walking distance to the Metra Mundelein Station, which provides direct access to downtown Chicago

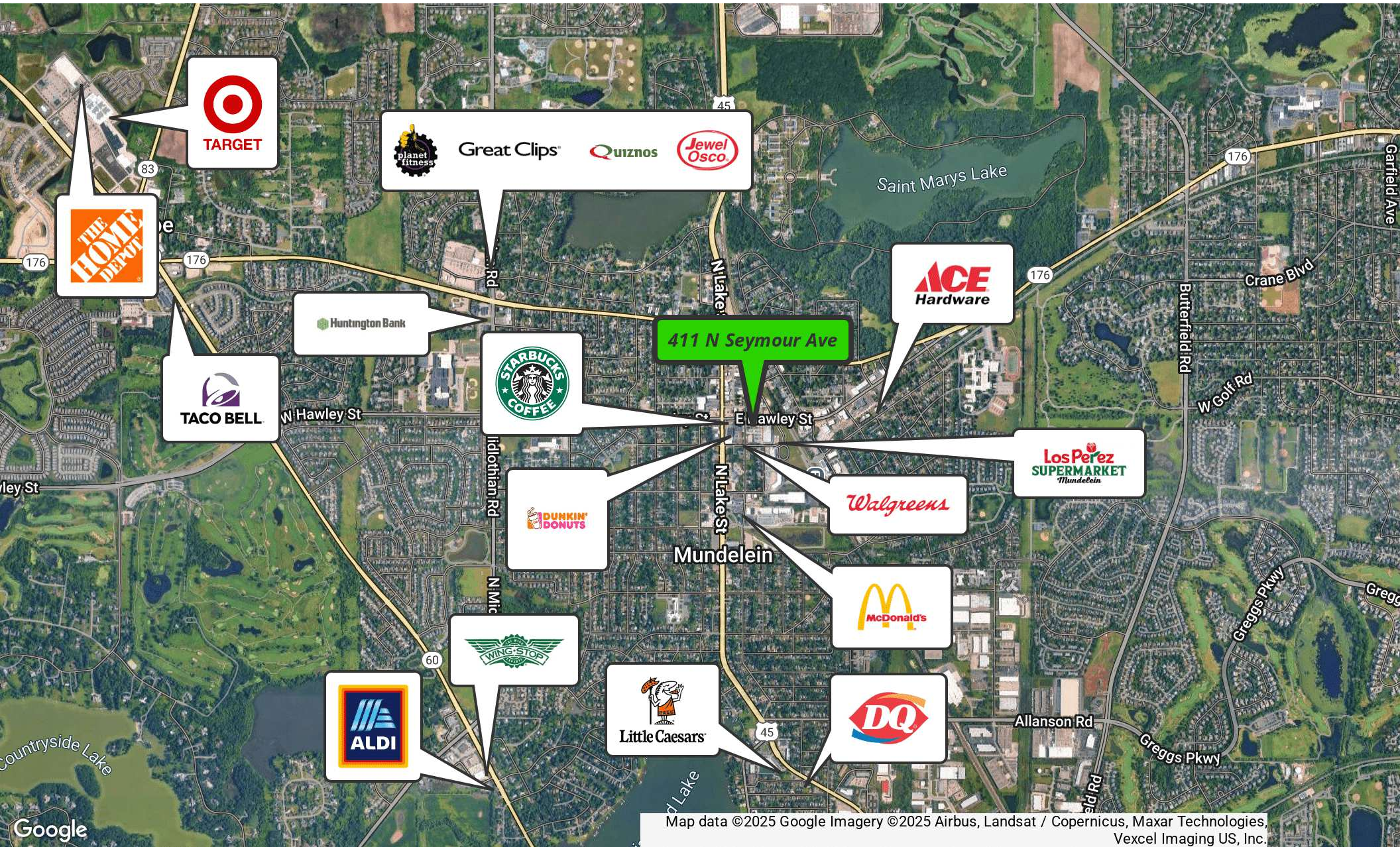
Matthew Tarshis
Principal
847.780.8063
mtarshis@frontlinerepartners.com

Andrew Rubin
Executive Vice President
224.628.4005
arubin@frontlinerepartners.com

Zack Pearlstein
Senior Vice President
847.275.6106
zpearlstein@frontlinerepartners.com

Andrew Picchiatti
Vice President
847.602.2005
apicchiatti@frontlinerepartners.com

Andrew Slovis
Associate Broker
847.989.6020
aslovis@frontlinerepartners.com



Map data ©2025 Google Imagery ©2025 Airbus, Landsat / Copernicus, Maxar Technologies, Vexcel Imaging US, Inc.

Matthew Tarshis
Principal

847.780.8063
mtarshis@frontlinerepartners.com

Andrew Rubín
Executive Vice President

224.628.4005
arubin@frontlinerepartners.com

Zack Pearlstein
Senior Vice President

847.275.6106
zpearlstein@frontlinerepartners.com

Andrew Picchietti
Vice President

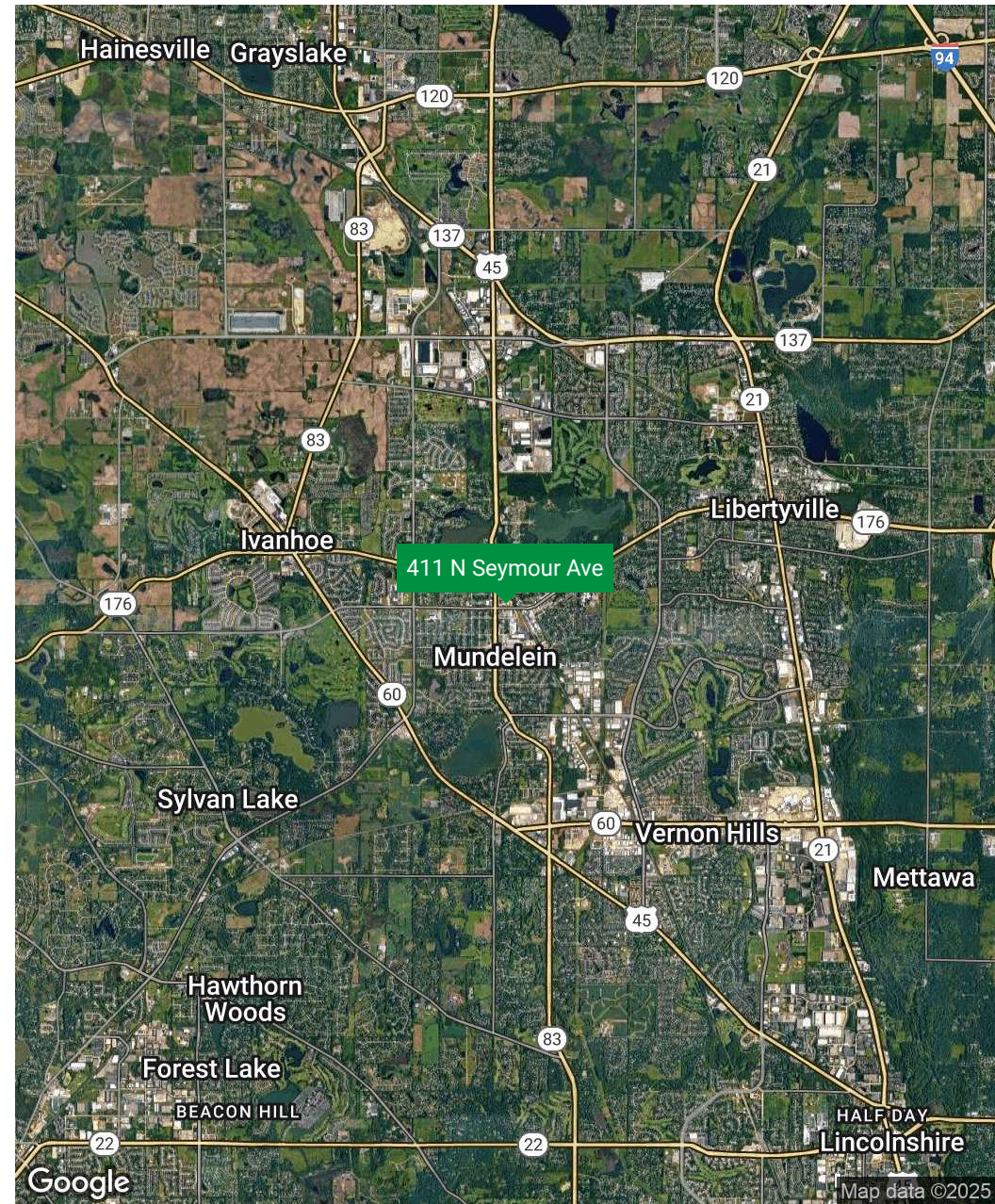
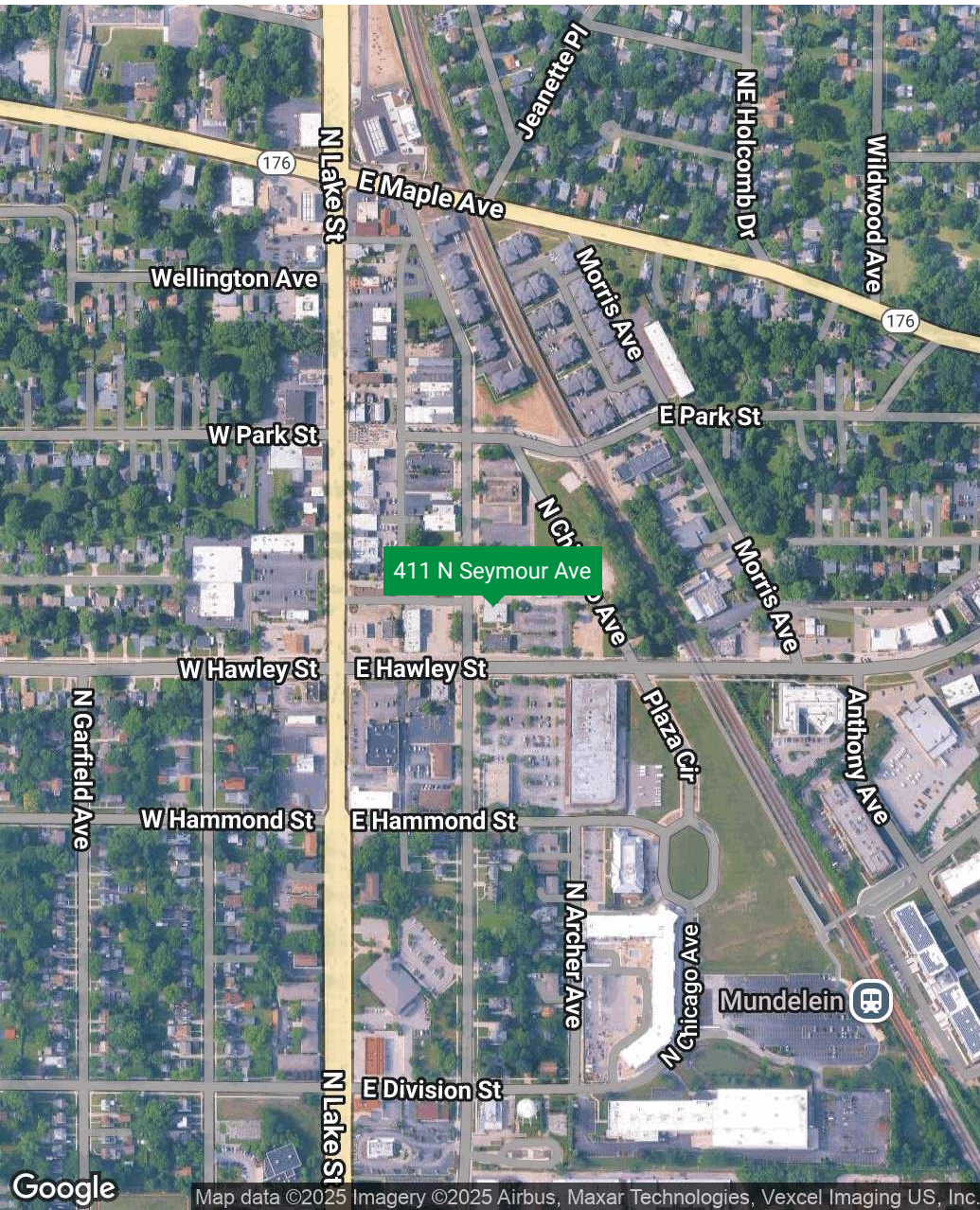
847.602.2005
apicchietti@frontlinerepartners.com

Andrew Slovis
Associate Broker

847.989.6020
aslovis@frontlinerepartners.com

FOR LEASE | 411 N SEYMOUR AVE

LOCATION MAP



Matthew Tarshis
Principal

847.780.8063
mtarshis@frontlinerepartners.com

Andrew Rubin
Executive Vice President

224.628.4005
arubin@frontlinerepartners.com

Zack Pearlstein
Senior Vice President

847.275.6106
zpearlstein@frontlinerepartners.com

Andrew Picchietti
Vice President

847.602.2005
apicchietti@frontlinerepartners.com

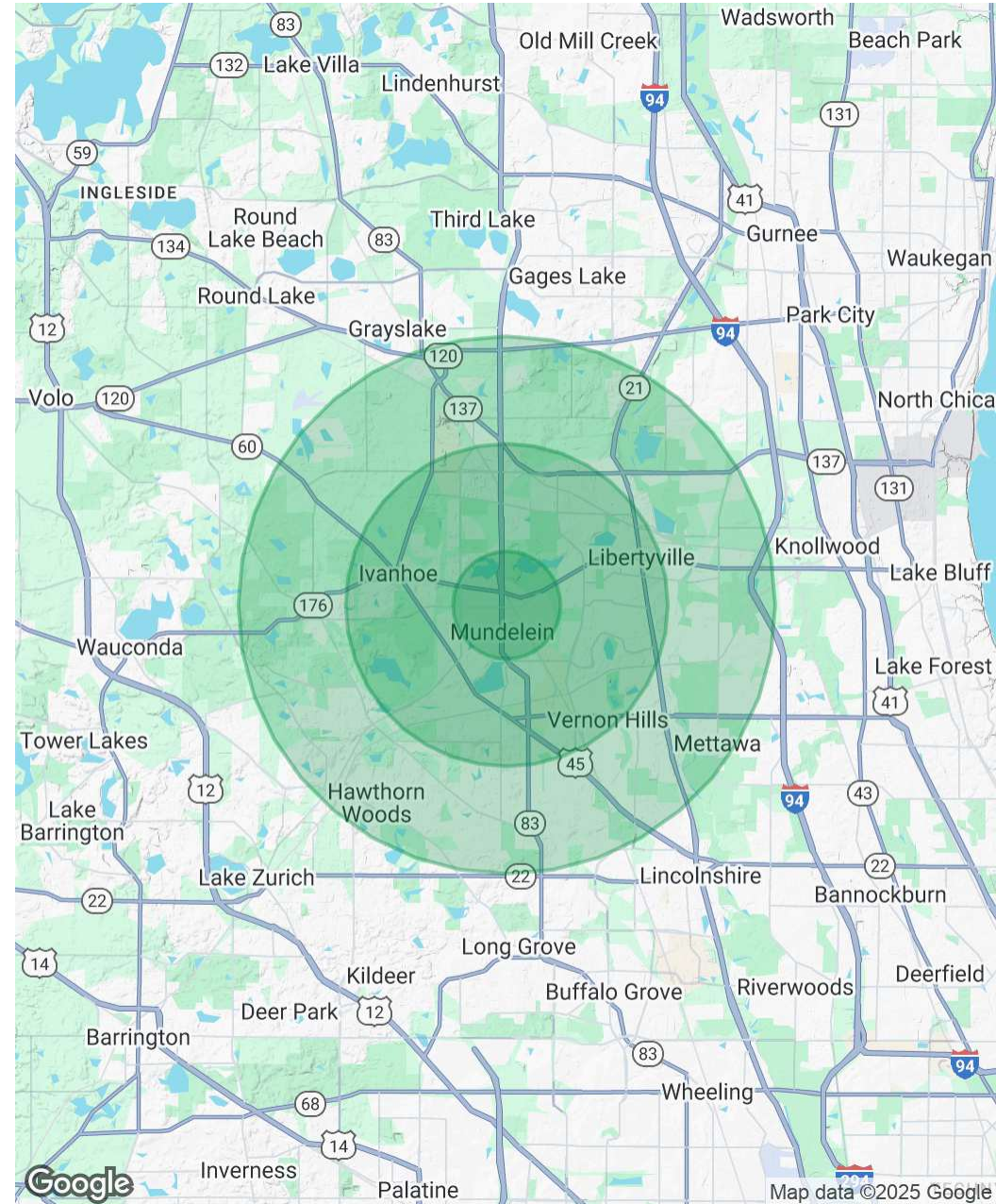
Andrew Slovis
Associate Broker

847.989.6020
aslovis@frontlinerepartners.com

Population	1 Mile	3 Miles	5 Miles
Total Population	13,478	65,950	115,088
Average Age	39	41	42
Average Age (Male)	38	40	41
Average Age (Female)	40	42	43

Households & Income	1 Mile	3 Miles	5 Miles
Total Households	4,568	24,359	42,771
# of Persons per HH	3	2.7	2.7
Average HH Income	\$112,978	\$168,187	\$176,480
Average House Value	\$297,751	\$456,226	\$488,159

Demographics data derived from AlphaMap



Matthew Tarshis
Principal
847.780.8063
mtarshis@frontlinerepartners.com

Andrew Rubin
Executive Vice President
224.628.4005
arubin@frontlinerepartners.com

Zack Pearlstein
Senior Vice President
847.275.6106
zpearlstein@frontlinerepartners.com

Andrew Picchiatti
Vice President
847.602.2005
apicchiatti@frontlinerepartners.com

Andrew Slovis
Associate Broker
847.989.6020
aslovis@frontlinerepartners.com

FOR LEASE | 411 N SEYMOUR AVE

ADDITIONAL PHOTOS



Matthew Tarshis
Principal
847.780.8063
mtarshis@frontlinerepartners.com

Andrew Rubin
Executive Vice President
224.628.4005
arubin@frontlinerepartners.com

Zack Pearlstein
Senior Vice President
847.275.6106
zpearlstein@frontlinerepartners.com

Andrew Picchietti
Vice President
847.602.2005
apicchietti@frontlinerepartners.com

Andrew Slovis
Associate Broker
847.989.6020
aslovis@frontlinerepartners.com