

FOR LEASE

235

KING STREET EAST

PARTIAL OR FULL BUILDING OPPORTUNITY

1ST FLOOR & BASEMENT | 2ND FLOOR | 3RD FLOOR

CBRE

FOR LEASE

235

KING STREET EAST

BUILDING FEATURES



High-end improvements and finishes



Modern style build-out



Elevator to each floor



Rooftop patio with Toronto skyline views



Boutique private building

OVERVIEW

Short term solution with possible extension at the end of November 2027 (Call agents to discuss)

Fully improved and furnished, some items in the photos are not included

Owner occupied

Currently a legal firm with multiple private offices, boardrooms, several kitchens, open area and basement storage

Shipping and receiving truck level door through shared alleyway

Available March 2026 "as is"



FOR LEASE

235

KING STREET EAST

1st Floor - 4,706 sq. ft.



FOR LEASE

235

KING STREET EAST

2nd Floor - 4,768 sq. ft.



FOR LEASE

235

KING STREET EAST

3rd Floor - 4,768 sq. ft.



FOR LEASE

235

KING STREET EAST

FLOOR PLAN

UP TO 19,014 SQ. FT.

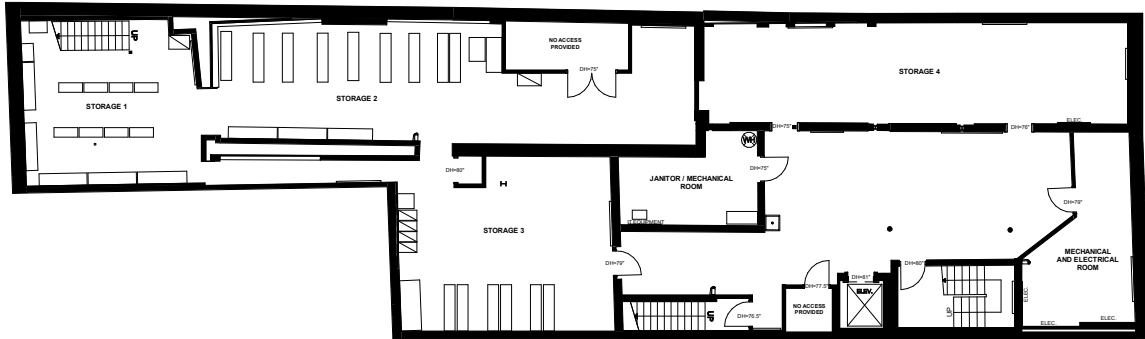
GROSS RENT

\$35.00 per sq. ft. per annum (2025 estimate)

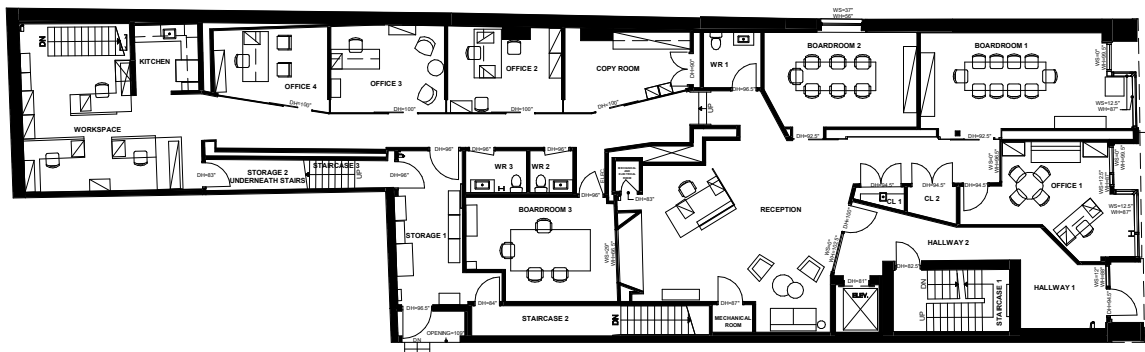
TERM

Nov 30, 2027

Basement – 4,772 sq. ft.



1st Floor – 4,706 sq. ft.



FOR LEASE

235

KING STREET EAST

FLOOR PLAN

UP TO 19,014 SQ. FT.

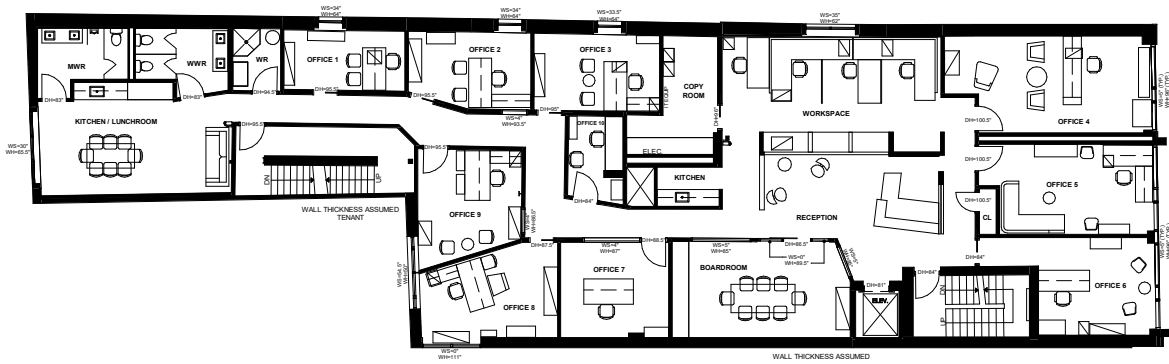
GROSS RENT

\$35.00 per sq. ft. per annum (2025 estimate)

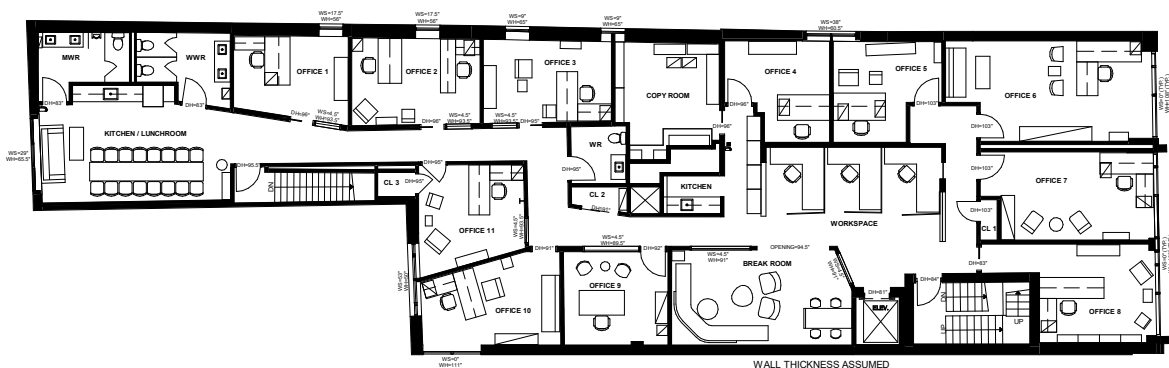
TERM

Nov 30, 2027

2nd Floor – 4,768 sq. ft.



3rd Floor – 4,768 sq. ft.





235

KING STREET EAST

Ed Seagram**

Vice President

T 416 815 2377 | C +1 416 618 5338

ed.seagram@cbre.com

Chris Vanexan*

Vice President

T 416 815 2376

chris.vanexan@cbre.com

Cole Borthwick

Sales Representative

T 647 286 3070

cole.borthwick@cbre.com

*Sales Representative **Broker

CBRE Limited, Real Estate Brokerage | 145 King Street West, Suite 1100 | Toronto, ON M5H 1J8 | +1 416 362 2244 | www.cbre.ca

This disclaimer shall apply to CBRE Limited, Real Estate Brokerage, and to all other divisions of the Corporation; to include all employees and independent contractors ("CBRE"). The information set out herein, including, without limitation, any projections, images, opinions, assumptions and estimates obtained from third parties (the "Information") has not been verified by CBRE, and CBRE does not represent, warrant or guarantee the accuracy, correctness and completeness of the Information. CBRE does not accept or assume any responsibility or liability, direct or consequential, for the Information or the recipient's reliance upon the Information. The recipient of the Information should take such steps as the recipient may deem necessary to verify the Information prior to placing any reliance upon the Information. The Information may change and any property described in the Information may be withdrawn from the market at any time without notice or obligation to the recipient from CBRE. CBRE and the CBRE logo are the service marks of CBRE Limited and/or its affiliated or related companies in other countries. All other marks displayed on this document are the property of their respective owners. All Rights Reserved.

CBRE