

FOR SALE

\$875,000

645 N Cummings St Los Angeles CA

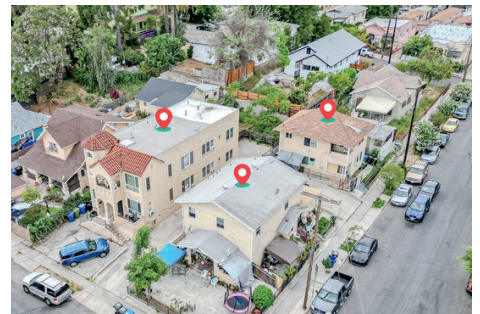
Duplex

2 Units
3,430 Sqft Sqft | 5,369 Lot Size

This well-maintained duplex presents a rare opportunity for significant rental growth in the rapidly evolving **Boyle Heights market**. Each spacious unit offers approximately **1,715 sq ft**, featuring 5 bedrooms and 2 bathrooms an uncommon and highly desirable layout ideal for **maximizing rental income** and attracting long-term tenants. Situated in a quiet residential neighborhood, the property offers a unique balance of suburban tranquility and proximity to ongoing urban development and appreciation.

Key Details

- Duplex with tremendous upside
- Tenants pay all utilities
- Quiet residential neighborhood
- Current Income: \$5,178
- Built in 1931



Alexis Kim

Commercial/Residential Specialist | DRE #01377398
alexiskimrealestate.com | akim.realestate@gmail.com | 213.200.5882

