

# Irvine / Tustin Legacy Office Available for Sublease

savills

FOR SUBLEASE

320 Commerce, Irvine, CA 92602



## Building Profile

10,526 RSF  
TOTAL SF AVAILABLE

Withheld  
ASKING LEASE RATE PER SF

30 - 60 Days  
AVAILABILITY

Thru 12/31/2027  
TERM

### KEY HIGHLIGHTS

- Located along the 5 Freeway between Jamboree and Culver, Market Place Center is a vibrant campus-style office community offering complimentary surface parking.
- Café 350 offers revitalized soft seating, complimentary Wi-Fi, and a shaded outdoor lounge.
- Conveniently located near The Market Place, a 1.6 million-square-foot, full-service retail destination with more than 120 shops and restaurants.
- Furniture available.
- Please call to schedule



AERIAL MAP

320 COMMERCE



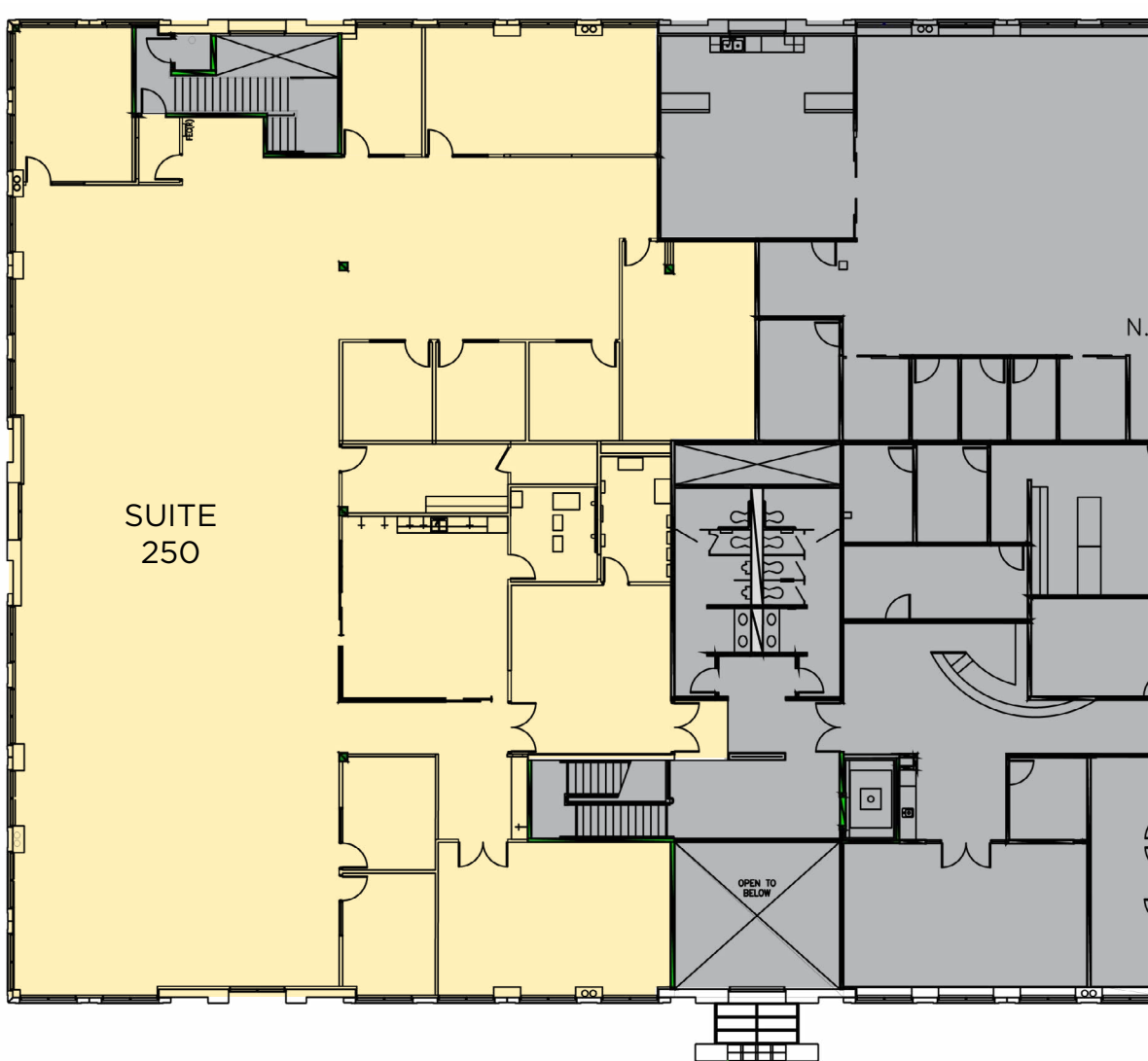
**Taylor Wood**

Vice Chairman  
+1 949 706 6924  
twood@savills.us

**Isabella Gonzalez**

Assistant Director  
+1 949 706 6921  
igonzalez@savills.us

© 2026 Savills. All rights reserved. The information contained in this communication has been obtained from a variety of sources believed to be reliable but has not been verified. NO WARRANTY OR REPRESENTATION, EXPRESS OR IMPLIED, IS MADE AS TO THE CONDITION OF THE PROPERTY OR ACCURACY OR COMPLETENESS OF THE INFORMATION CONTAINED HEREIN AND SAME IS SUBMITTED SUBJECT TO ERRORS, OMISSIONS, CHANGE OF PRICE, RENTAL OR OTHER CONDITIONS, WITHDRAWAL WITHOUT NOTICE AND TO ANY SPECIFIC CONDITIONS IMPOSED BY THE PROPERTY OWNER OR LESSOR



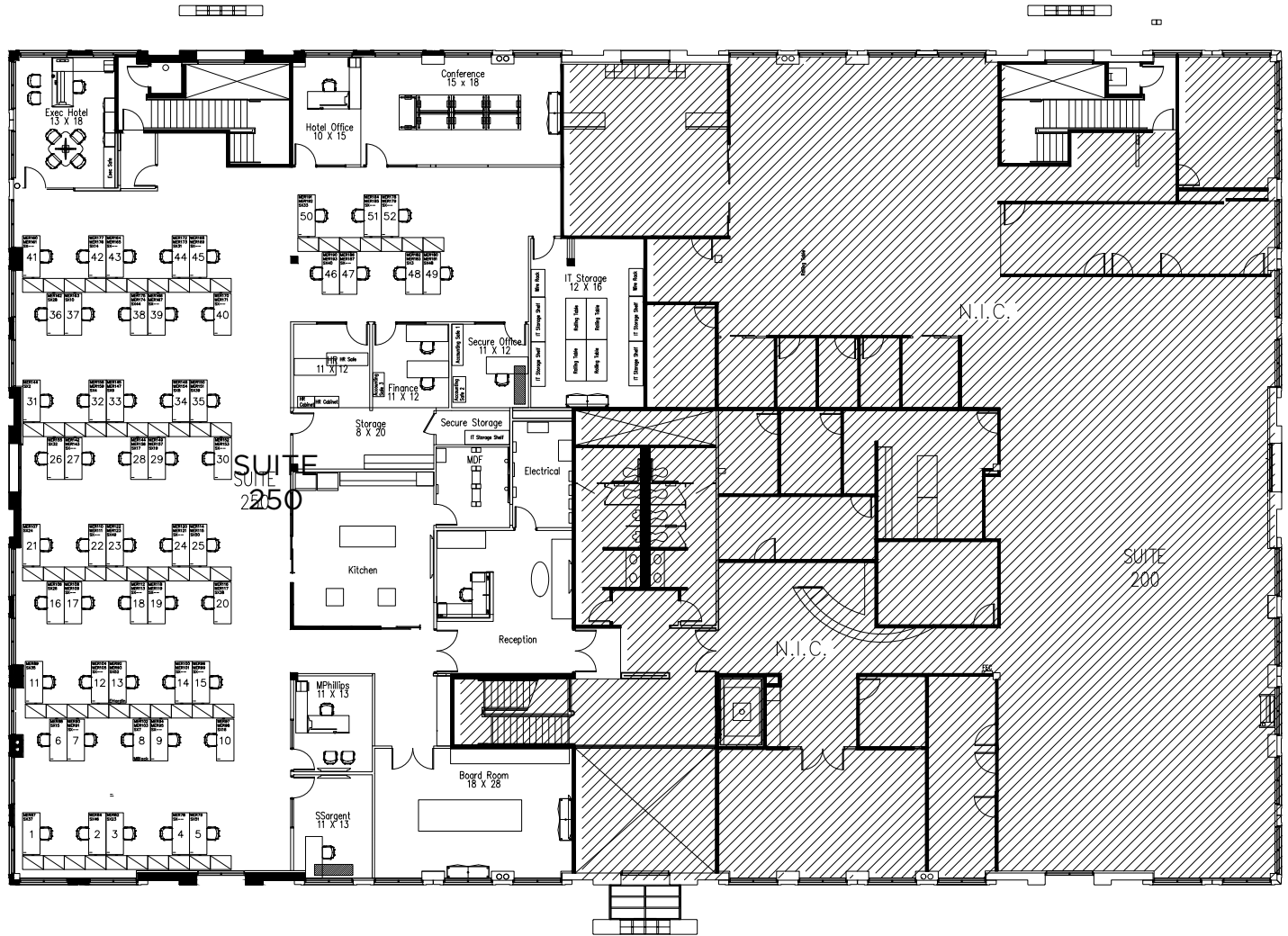
**Taylor Wood**

Vice Chairman  
+1 949 706 6924  
twood@savills.us

**Isabella Gonzalez**

Assistant Director  
+1 949 706 6921  
igonzalez@savills.us

©2026 Savills. All rights reserved. The information contained in this communication has been obtained from a variety of sources believed to be reliable but has not been verified. NO WARRANTY OR REPRESENTATION, EXPRESS OR IMPLIED, IS MADE AS TO THE CONDITION OF THE PROPERTY OR ACCURACY OR COMPLETENESS OF THE INFORMATION CONTAINED HEREIN AND SAME IS SUBMITTED SUBJECT TO ERRORS, OMISSIONS, CHANGE OF PRICE, RENTAL OR OTHER CONDITIONS, WITHDRAWAL WITHOUT NOTICE AND TO ANY SPECIFIC CONDITIONS IMPOSED BY THE PROPERTY OWNER OR LESSOR



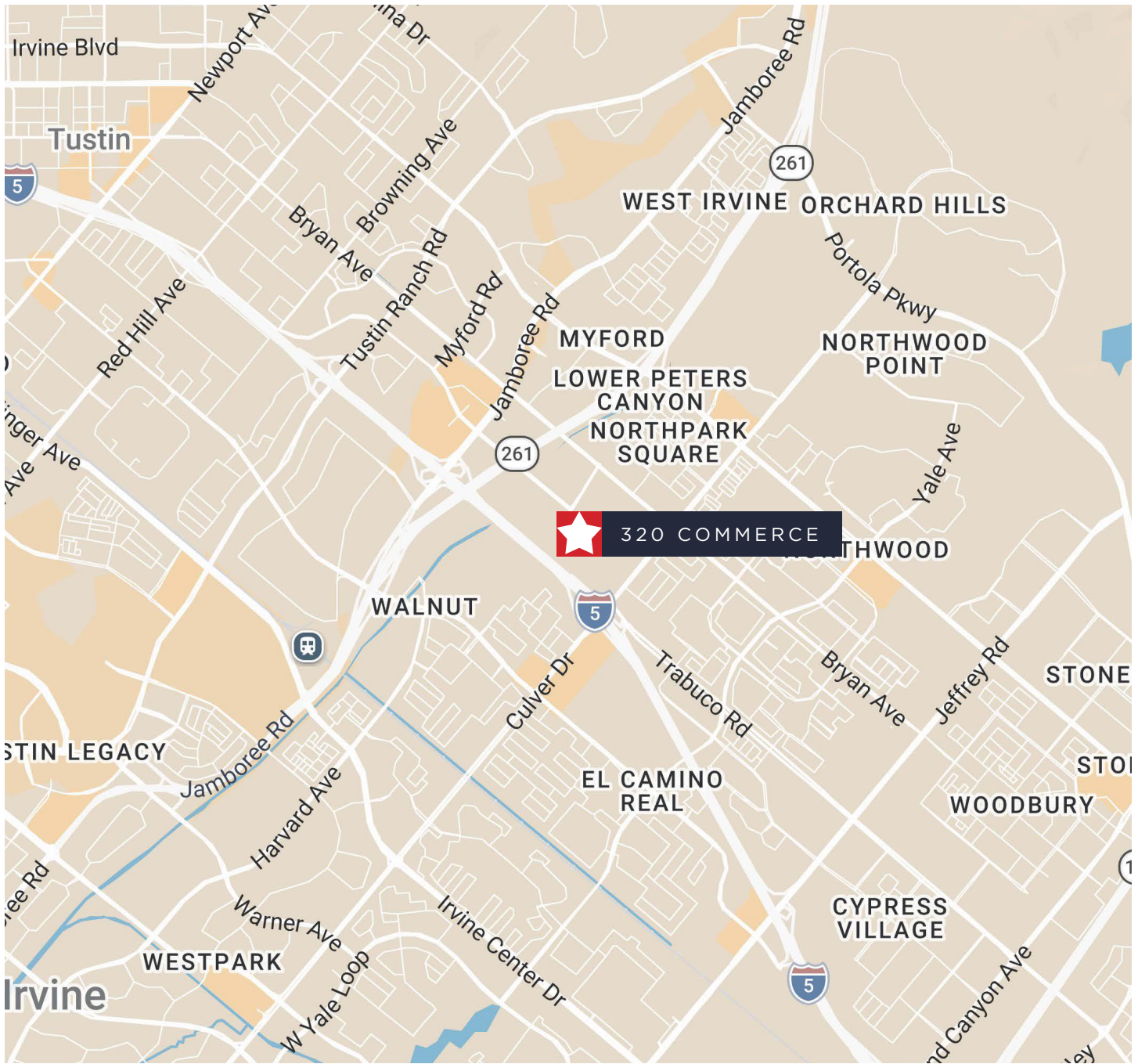
**Taylor Wood**

Vice Chairman  
 +1 949 706 6924  
 twood@savills.us

**Isabella Gonzalez**

Assistant Director  
 +1 949 706 6921  
 igonzalez@savills.us

©2026 Savills. All rights reserved. The information contained in this communication has been obtained from a variety of sources believed to be reliable but has not been verified. NO WARRANTY OR REPRESENTATION, EXPRESS OR IMPLIED, IS MADE AS TO THE CONDITION OF THE PROPERTY OR ACCURACY OR COMPLETENESS OF THE INFORMATION CONTAINED HEREIN AND SAME IS SUBMITTED SUBJECT TO ERRORS, OMISSIONS, CHANGE OF PRICE, RENTAL OR OTHER CONDITIONS, WITHDRAWAL WITHOUT NOTICE AND TO ANY SPECIFIC CONDITIONS IMPOSED BY THE PROPERTY OWNER OR LESSOR



**Taylor Wood**

Vice Chairman  
+1 949 706 6924  
twood@savills.us

**Isabella Gonzalez**

Assistant Director  
+1 949 706 6921  
igonzalez@savills.us