

FOR LEASE

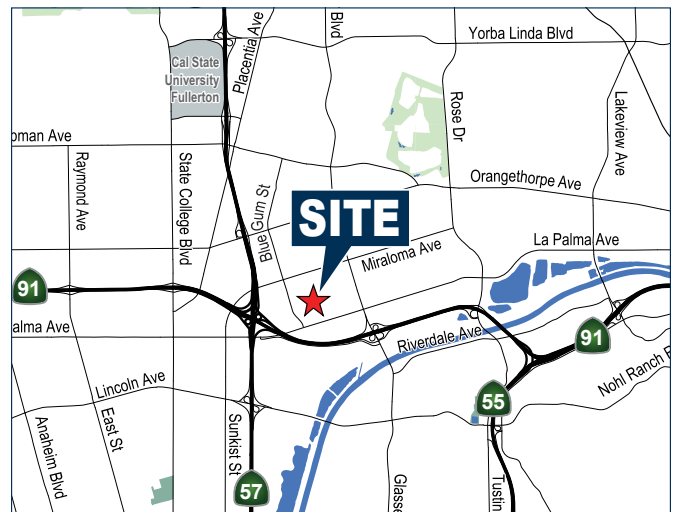
±9,680 SQ. FT.
Freestanding Building

1170 N. VAN HORNE WAY | ANAHEIM | CA



PROPERTY FEATURES

- ± 9,680 Sq. Ft. Industrial Building
- ± 2,033 Sq. Ft. of Office Space
- 400 Amps of 120/208 Volt (Verify)
- Two (2) Ground Level Doors
- 16' Warehouse Clearance
- 2.0/1,000 Sq. Ft. Parking Ratio
- Convenient Access to the Riverside (91) and Santa Ana (57) Freeways



MIKE HEFNER, SIOR
Executive Vice President | Partner
(714) 935-2331
mhefner@voitco.com
License #00857352

BRENDEN HEFNER
Senior Associate
(714) 935-2326
bhefner@voitco.com
License #02114046

Voit
REAL ESTATE SERVICES

HV HEFNER
VERNICK
TEAM

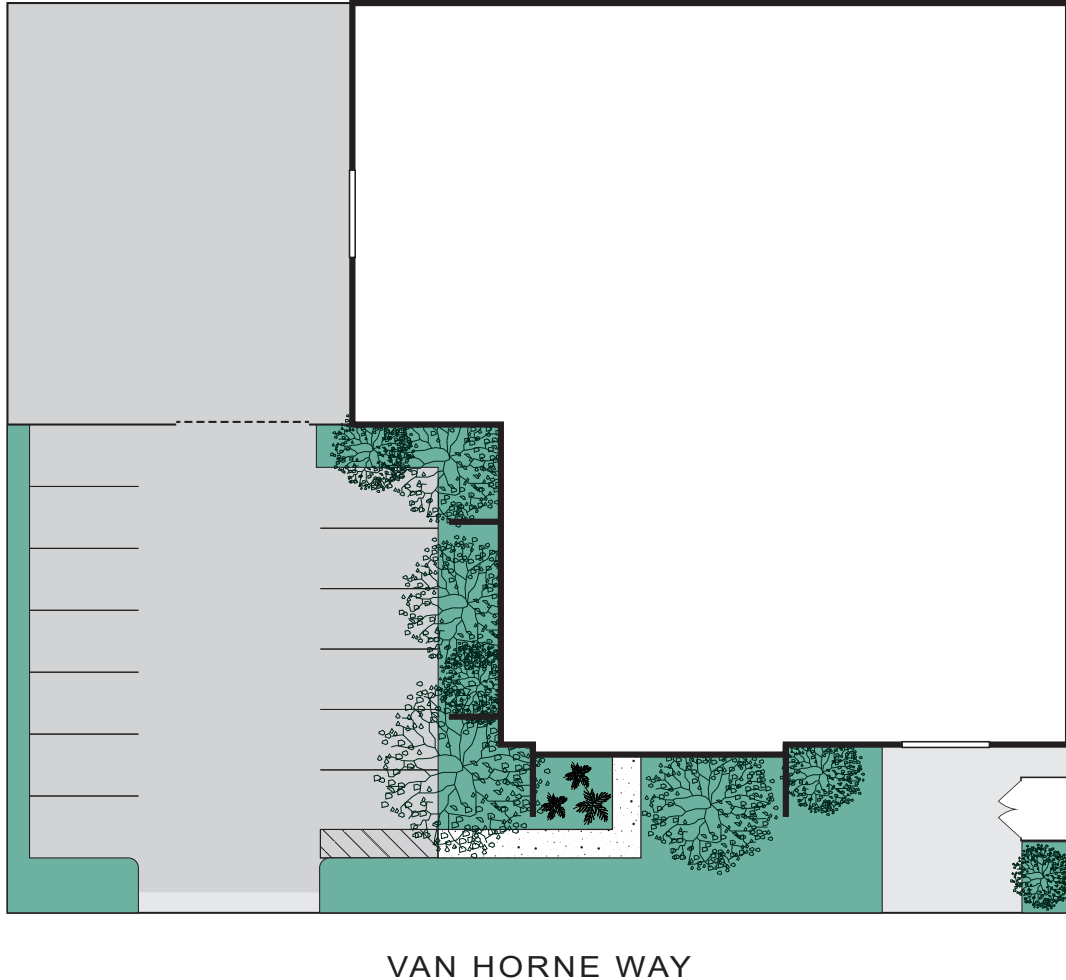
2400 E. Katella Ave., Suite 750
Anaheim, CA 92806
www.VoitCo.com

FOR LEASE

±9,680 SQ. FT.
Freestanding Building

1170 N. VAN HORNE WAY | ANAHEIM | CA

SITE PLAN



**Not to scale. Floor plan to come*

MIKE HEFNER, SIOR
Executive Vice President | Partner
(714) 935-2331
mhefner@voitco.com
License #00857352

BRENDEN HEFNER
Senior Associate
(714) 935-2326
bhefner@voitco.com
License #02114046

Voit
REAL ESTATE SERVICES

HV HEFNER
VERNICK
TEAM

2400 E. Katella Ave., Suite 750
Anaheim, CA 92806
www.VoitCo.com